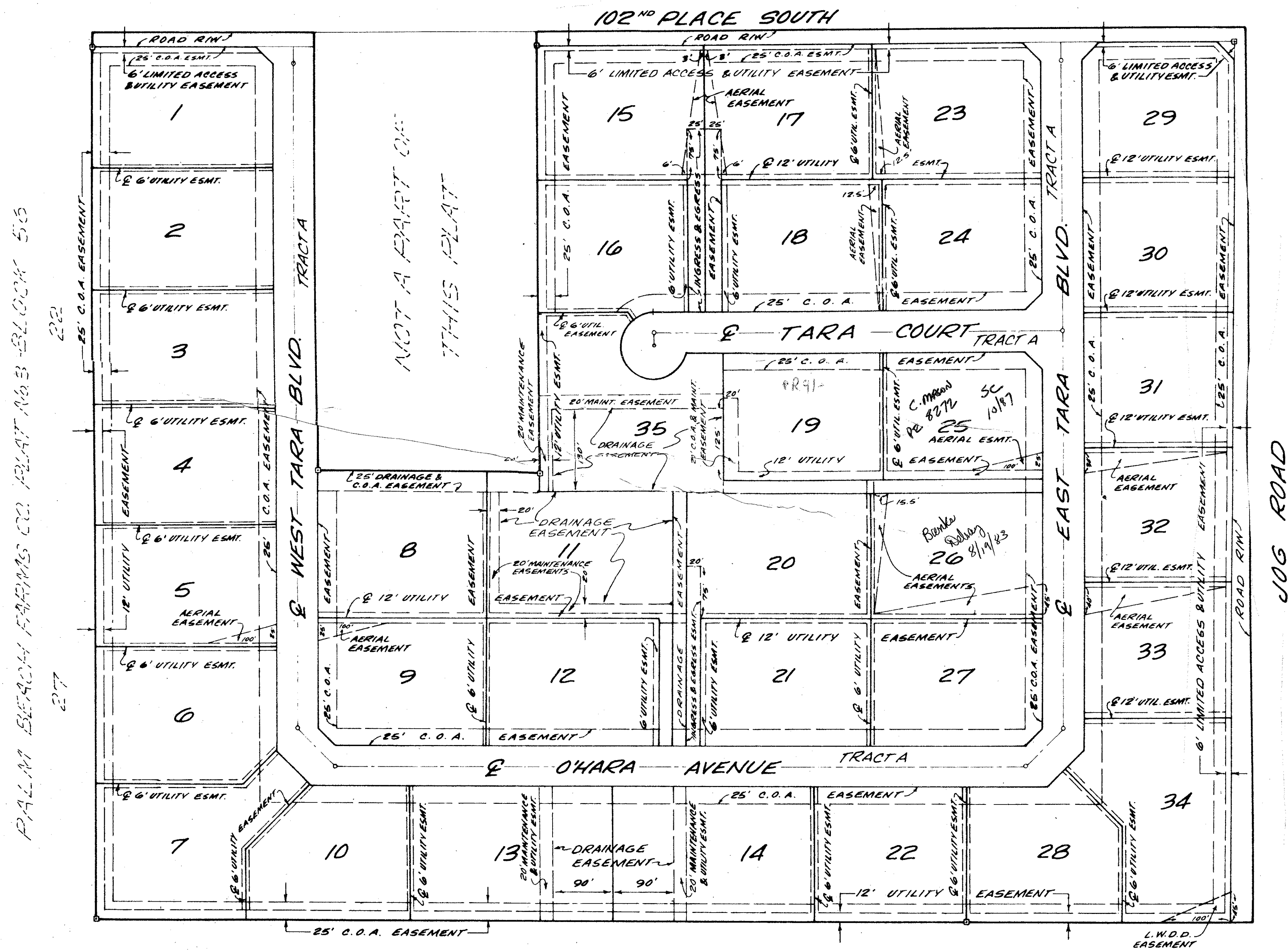


TARA ESTATES P.U.D.

A REPLAT OF TRACTS 17, 18, 19, 21, 28, 29, 30, 31 & 32, BLOCK 56
PALM BEACH FARMS COMPANY PLAT No. 3, PLAT BOOK 2, PG. 50
SECTION 27, TOWNSHIP 45 SOUTH, RANGE 42 EAST

PALM BEACH COUNTY, FLORIDA
O'BRIEN, SUITER & O'BRIEN, INC. ENGINEERS & SURVEYORS
JANUARY 1977 SCALE: 1" = 100'

SHEET 2 of 2 SHEETS



PALM BEACH FARMS CO. PLAT No. 3 - BLOCK 56

NOT A PART OF THIS PLAT

35

1000-145

EASEMENT DETAILS

27/45/42

33
89

TARA ESTATES P.U.D.

NOTE: "C.O.A. EASEMENTS" ARE COMMON OPEN AREA EASEMENTS

L.W.D.D. LATERAL No. 25