

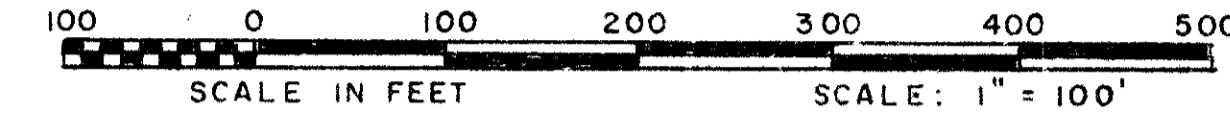
PINEWOOD EAST NO. 2 OF WELLINGTON

P.U.D.
 IN PART OF SECTIONS 2, 3 & 10, TWP. 44 S., RGE. 41 E.
 PALM BEACH COUNTY, FLORIDA
 IN 5 SHEETS SHEET NO. 3

GEE & JENSON
 ENGINEERS-ARCHITECTS-PLANNERS, INC.
 WEST PALM BEACH, FLORIDA
 NOVEMBER 1976

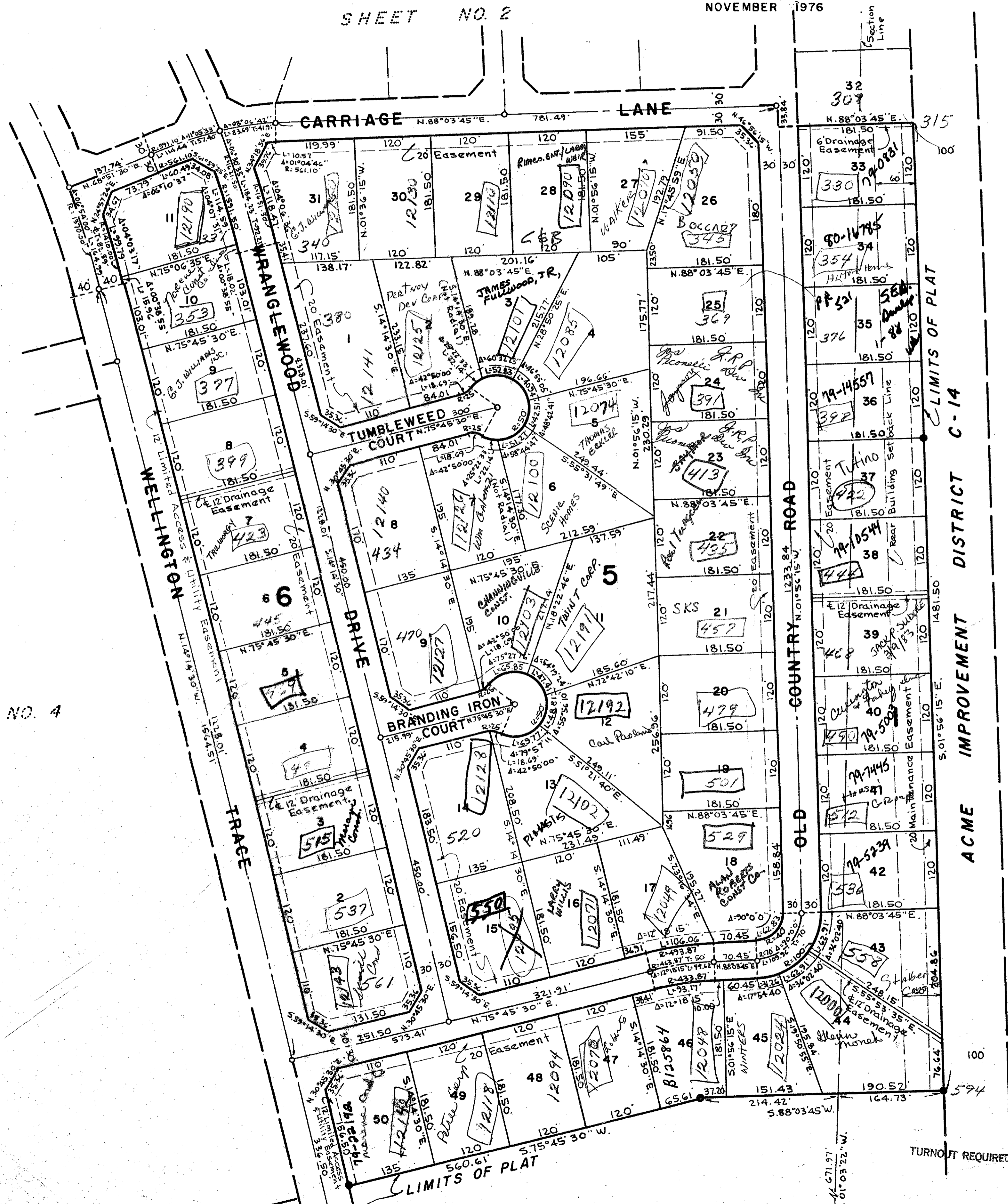
98

STATE OF FLORIDA
 COUNTY OF PALM BEACH
 This Plat was filed for record at _____ M.
 this _____ day of _____, 197____,
 and duly recorded in Plat Book No. _____
 on page _____
 JOHN B. DUNKLE, Clerk Circuit Court
 By _____, D.C.



SHEET NO. 5

SHEET NO. 4

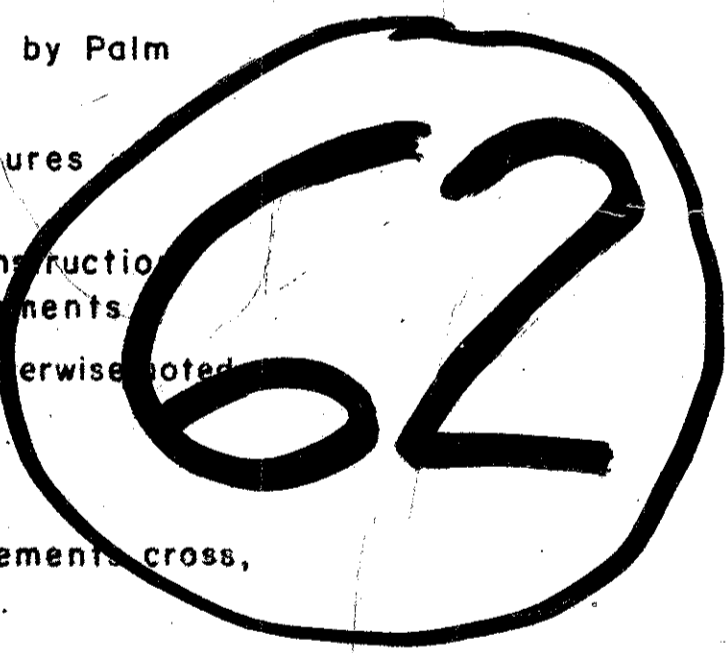


PALM BEACH LITTLE RANCHES
 (UNRECORDED)

LIMITS OF PLAT
 ACME IMPROVEMENT DISTRICT C-14

NOTES

- All bearings shown hereon are relative to an assumed meridian used throughout Wellington.
- Building Setback Lines shall be as required by Palm Beach County Zoning Regulations.
- There shall be no buildings or other structures placed on Utility Easements.
- There shall be no buildings or any kind of construction or trees or shrubs placed on Drainage Easements.
- Easements are for Public Utilities unless otherwise noted.
- denotes Permanent Reference Monument.
- denotes Permanent Control Point.
- Where Utility Easements and Drainage Easements cross, Drainage Easements shall take precedent.



2,3,4,10/44/41 0332-051

33
 98

UNPLATTED
PINEWOOD EAST NO. 2