

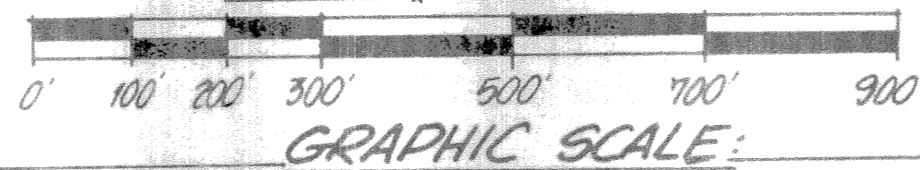
HOMELAND

A SUBDIVISION OF ALL OF SECTION 35, TOWNSHIP 44 SOUTH, RANGE 41 EAST; ALL OF TRACT 38, HIATUS BETWEEN TOWNSHIPS 44 AND 45 SOUTH, RANGE 41 EAST; AND PART OF SECTION 2, TOWNSHIP 45 SOUTH, RANGE 41 EAST
PALM BEACH COUNTY, FLORIDA

SHEET 3 OF 7 SHEETS

SCALE: 1"=200'

JUNE 1977



CURVE "C" TABLES

CH.	BEARING	CHORD	RADIUS	DELTA	ARC	TAN.
1	N 78°45'41"E	351.16'	296.30'	72°40'48"	375.65'	217.97'
2	S 53°29'19"E	137.43'	296.30'	26°49'12"	138.70'	70.84'
3	N 63°17'18"E	42.53'	1270.87'	01°55'03"	42.53'	21.27'
4	N 77°12'33"E	570.13'	1270.87'	25°55'27"	575.02'	292.52'
5	N 70°12'40"E	251.80'	759.65'	19°04'48"	252.96'	127.88'
6	N 84°57'40"E	137.97'	759.65'	19°04'48"	138.15'	69.27'
7	N 07°12'30"W	172.00'	669.55'	14°45'34"	173.48'	86.72'
8	N 01°30'24"E	310.42'	302.80'	61°40'14"	325.92'	180.76'
9	N 37°30'24"E	54.52'	302.80'	10°19'46"	54.59'	27.37'
10	N 10°19'43"E	117.99'	323.73'	21°00'00"	118.65'	60.00'
11	S 89°49'43"E	452.29'	296.30'	99°30'00"	514.55'	350.00'
12	N 78°15'02"E	611.50'	1270.87'	27°50'30"	617.55'	315.00'
13	N 14°34'43"W	340.94'	669.55'	29°30'00"	344.73'	176.28'
14	N 02°21'51"E	318.17'	302.80'	63°23'09"	334.99'	186.98'
15	N 38°21'51"E	45.48'	302.80'	08°36'51"	45.53'	22.81'
16	N 10°19'43"W	117.99'	323.73'	21°00'00"	118.65'	60.00'
17	N 52°41'22"E	122.43'	280.38'	49°45'00"	243.46'	130.00'
18	S 52°41'22"E	122.43'	280.38'	25°13'17"	123.42'	62.73'
19	S 77°33'52"E	119.12'	280.38'	24°31'43"	120.03'	60.95'
20	Z 22°41'02"E	309.33'	452.47'	39°58'30"	315.69'	164.58'
21	Z 09°03'58"W	184.48'	452.47'	23°31'30"	189.78'	94.22'
22	Z 72°03'38"E	174.31'	280.38'	38°13'17"	177.25'	91.70'
23	X 47°11'08"E	66.05'	280.38'	13°31'43"	66.20'	33.26'
24	S 64°57'13"E	235.89'	280.38'	49°45'00"	243.46'	130.00'
25	X 16°43'48"E	395.87'	452.47'	51°52'58"	409.73'	220.11'
26	N 15°01'12"W	91.59'	452.47'	11°37'02"	91.74'	46.03'

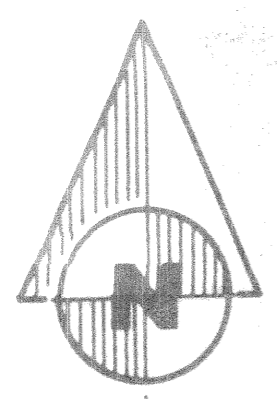
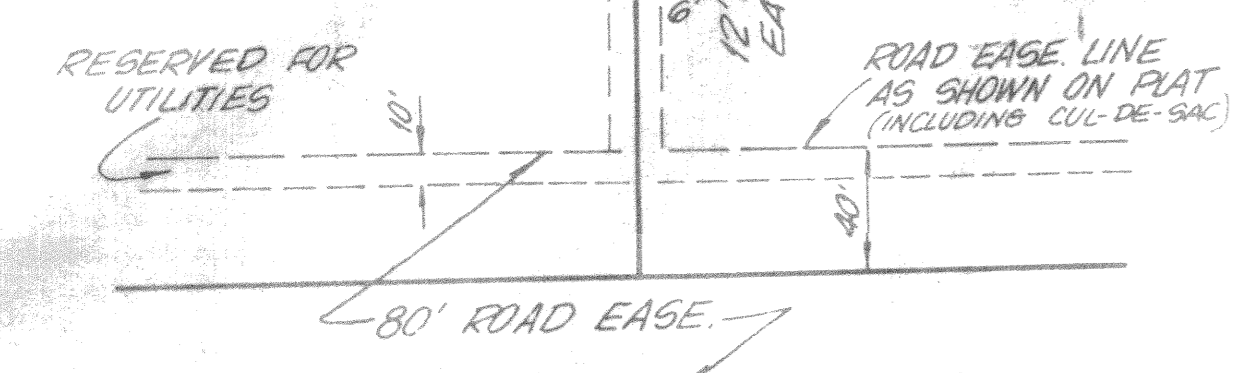
113

"T" TABLES

1	S 89°49'43"E	6.30'
2	S 89°49'43"E	6.30'
3	S 89°49'43"E	6.30'
4	N 14°46'57"W	119.83'
5	N 88°45'17"E	198.00'
6	S 89°49'43"E	105.90'
7	S 89°49'43"E	40.01'
8	S 89°49'43"E	40.00'

TYPICAL EASEMENTS

SCALE: 1"=60'



UNPLATTED (ACREAGE)

UNPLATTED (ACREAGE)



UNPLATTED (ACREAGE)

SECTION CORNER

SECTION CORNER

63

DETAIL #3

GENERAL NOTES

- (SEE NOTE 5, OF SURVEYOR NOTES - PAGE 1 OF 7)
- DENOTES PERMANENT REFERENCE MONUMENTS (PRM's)
- DENOTES PERMANENT POINTS
- BEARINGS ARE REFERRED TO AS ASSUMED BEARINGS OF S. 89° 57' 50" E. ALONG NORTH LINE OF SECTION 35, TOWNSHIP 44 S., RANGE 41 E.
- ALL LOT DIMENSIONS ARE TO LOT LINE INTERSECTION AND NOT TO EASEMENT LINE
- BUILDING SETBACKS SHALL BE AS REQUIRED BY PALM BEACH COUNTY ZONING REGULATIONS
- THERE SHALL BE NO BUILDINGS OR STRUCTURES CONSTRUCTION, TREES OR SHRUBS PLANTED IN DRAINAGE EASEMENTS
- ALL LOTS CONTAIN A MINIMUM 5.00 ACRES
- ALL NON CUL-DE-SAC LOTS SHALL HAVE A MINIMUM ROAD FRONTAGE OF 100 FEET OR BE A 300 FOOT MINIMUM WIDTH AT COLLECTING MIDPOINTS OF LONGEST LOT LINE
- FOR EXAMPLE: UTILITY EASEMENT, DETAIL OF UTILITY EASEMENT

0256-000

HOMELAND

Dailey-Fotony, inc.
land surveyors, planners, engineers

1024 So. Military Trail, Suite 101 - Palm Beach, Florida 33406 phone 305/965-8787