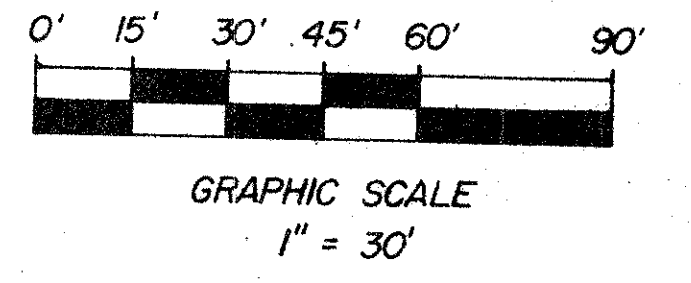
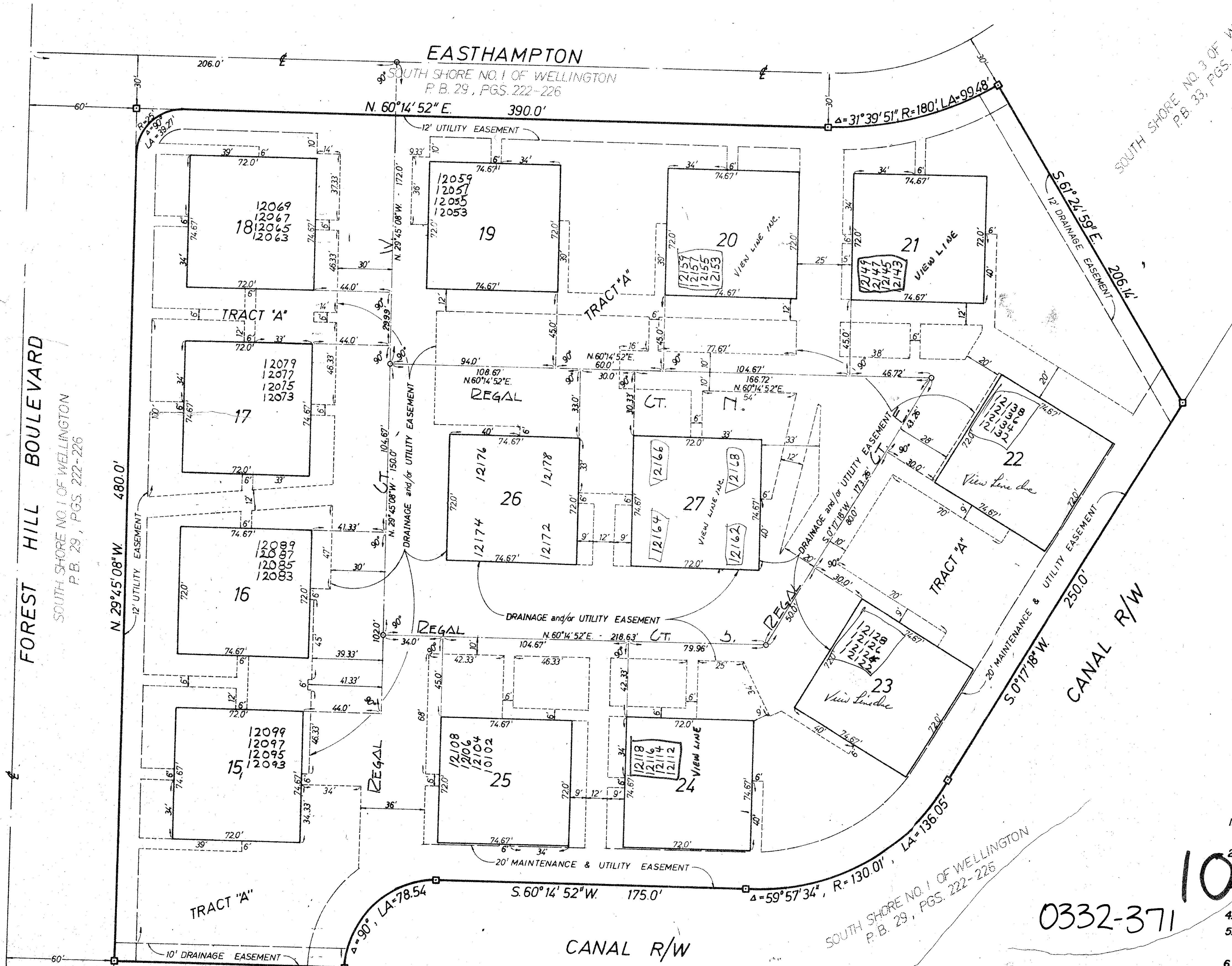


PLAT NO. 2 OF The French Quarter

153

SHEET 2 OF 2



P.U.D. TABULATIONS

TOTAL ACREAGE	5.34 ACRES
TOTAL NO. OF BUILDINGS	13
NUMBER OF UNITS PER BUILDING	4
TOTAL NO. OF UNITS	52
NUMBER OF UNITS PER ACRE	9.74
OPEN SPACE	47.0%

NOTES:

1. THERE SHALL BE NO TREES, SHRUBS OR STRUCTURES BUILT OR PLACED ON DRAINAGE AND/OR UTILITY EASEMENTS.
2. EASEMENTS, UNLESS OTHERWISE NOTED, ARE FOR DRAINAGE AND/OR PUBLIC UTILITIES.
3. LOTS ARE AS SHOWN AND NUMBERED, ALL OTHER AREAS WITHIN THE LIMITS OF THIS PLAT ARE PART OF TRACT "A".
4. ALL INTERIOR LOT ANGLES ARE 90°.
5. PERMANENT REFERENCE MONUMENTS SHOWN THUS: □
PERMANENT CONTROL POINTS SHOWN THUS: ●
6. BEARINGS SHOWN HEREON ARE BASED ON THE PLAT OF SOUTH SHORE NO. 1 OF WELLINGTON AS RECORDED IN P.B. 29, PGS. 222-226.

0332-371 10/4/41

10' DRAINAGE EASEMENT
S. 60°14'52"W 130.0'
- PLAT NO. 1 OF
THE FRENCH QUARTER
P.B. 32, PGS. 66 & 67

THE FRENCH QUARTER

THIS INSTRUMENT WAS PREPARED BY ROLF ERNST WEIMER
IN THE OFFICE OF WEIMER AND COMPANY, INC.,
2500 FOREST HILL BOULEVARD, WEST PALM BEACH, FL 33411

33
153