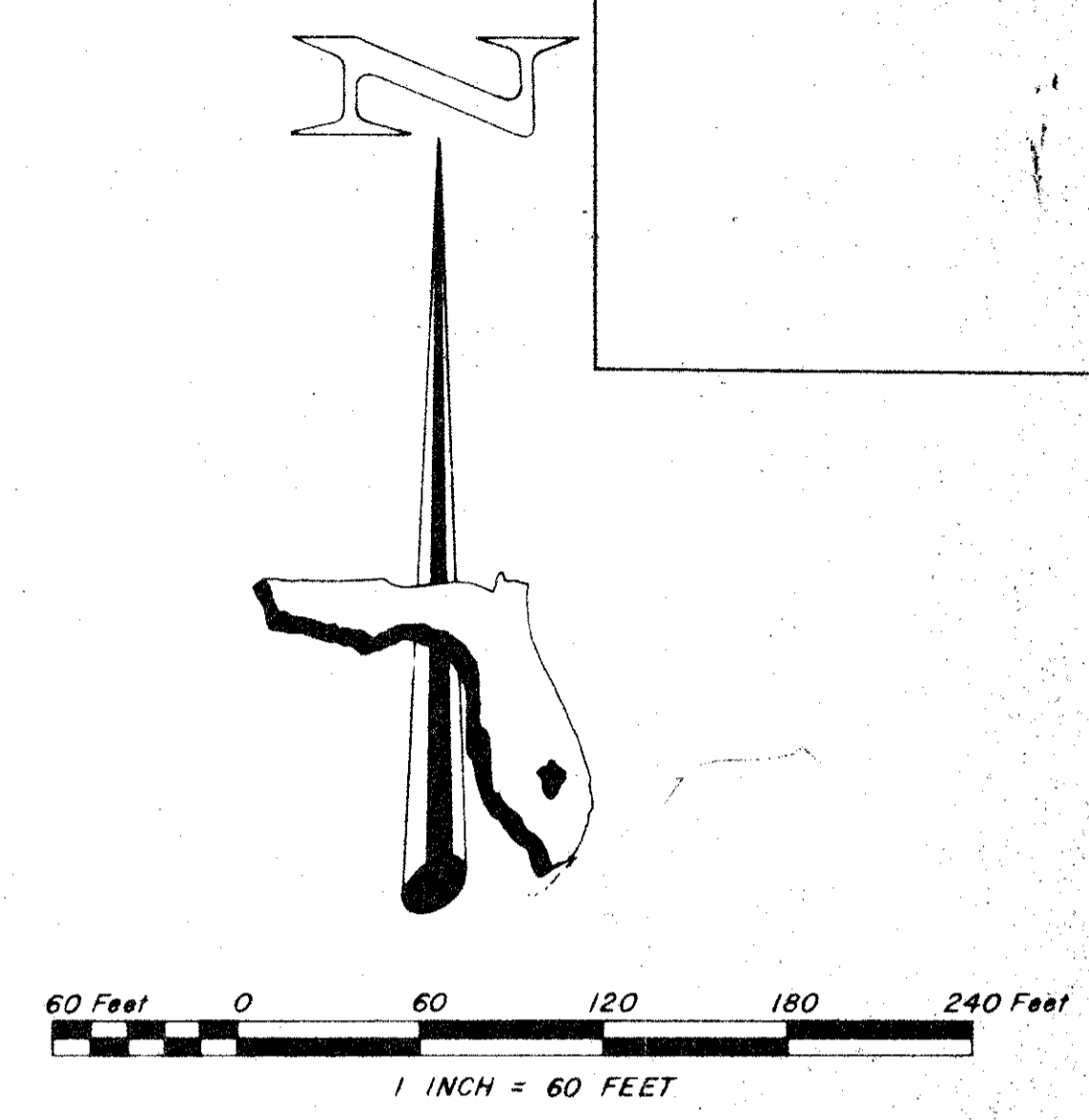
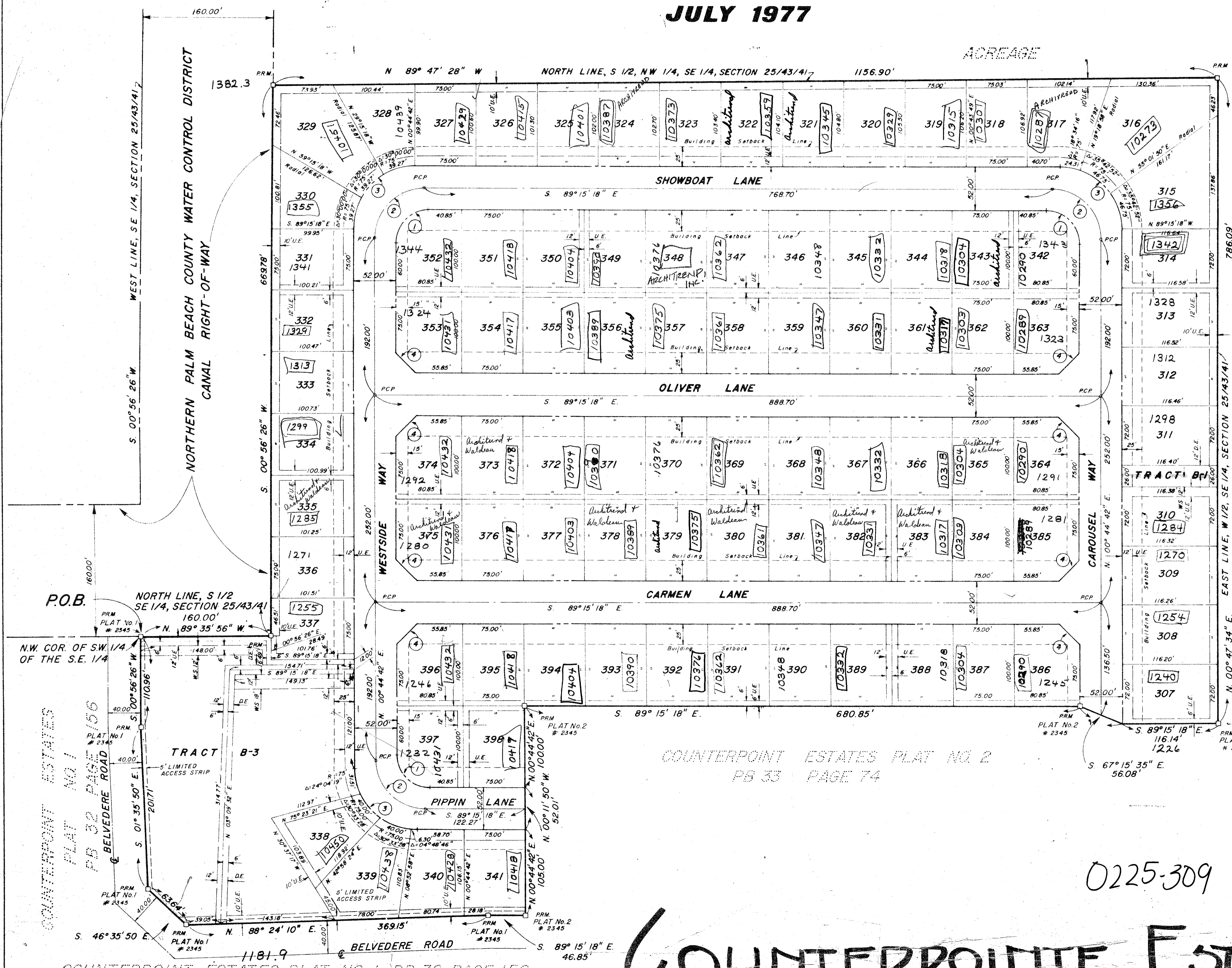


COUNTERPOINT ESTATES PLAT No. 3

IN SECTION 25, TOWNSHIP 43 SOUTH, RANGE 41 EAST, PALM BEACH COUNTY, FLORIDA

JULY 1977

160



GRAPHIC SCALE

CURVE DATA

CURVE NO	RADIUS	DELTA	ARC	CHORD
1	40.00'	90°00'00"	62.83'	56.57'
2	60.00'	90°00'00"	94.25'	84.85'
3	75.00'	90°00'00"	117.81'	106.07'
4	25.00'	90°00'00"	39.27'	35.56'

BEARING DATUM

ALL BEARINGS SHOWN HEREON ARE RELATED TO AN ASSUMED BEARING OF N 89° 47' 28" W ALONG THE NORTH LINE OF THE SOUTH HALF OF THE NW 1/4 OF THE SE 1/4 OF SECTION 25, TOWNSHIP 43 SOUTH, RANGE 41 EAST.

NOTES

- NO BUILDING OR ANY KIND OF CONSTRUCTION OR TREES SHALL BE PLACED WITHIN EASEMENTS.
- DRAINAGE EASEMENTS TAKE PRECEDENCE OVER UTILITY EASEMENTS.
- MAINTENANCE ACCESS RIGHTS ARE GRANTED OVER ALL TRACTS SHOWN HEREON FOR THE PURPOSE OF MAINTENANCE OF UTILITIES.

LEGEND

- ⊖ U.E. INDICATES POWER AND/OR TELEPHONE EASEMENT
- ⊖ D.E. INDICATES DRAINAGE EASEMENT
- ⊖ W.S. INDICATES WATER AND/OR SANITARY SEWER EASEMENT
- ⊖ P.C.P. INDICATES PERMANENT CONTROL POINT
- ⊖ P.R.M. INDICATES PERMANENT REFERENCE MONUMENT

REVISION	DATE	DESCRIPTION
1	10-77	ADD UTILITY EASEMENTS-LOTS 307-341 B
2	11-77	TRACT B-3, DELETE W.S. EASEMENT-LOTS 314-316

RA GONZALEZ AND COMPANY, INC.
CONSULTING ENGINEERS
FLORIDA SURVEYING & MAPPING, INC.
REGISTERED LAND SURVEYORS
NORTH PALM BEACH, FLORIDA WEST PALM BEACH, FLORIDA

DESIGNED BY: R.S. APPROVED: [Signature] SCALE: 1"=60'

DRAWN BY: J.M. DATE: 7-5-77

CHECKED BY: G.C.P.

COUNTERPOINT EST.

0225-309

25/43/14

33
160

COUNTERPOINT ESTATES PLAT NO. 1, PB 32 PAGE 156

COUNTERPOINT ESTATES PLAT NO. 2
PB 33 PAGE 74