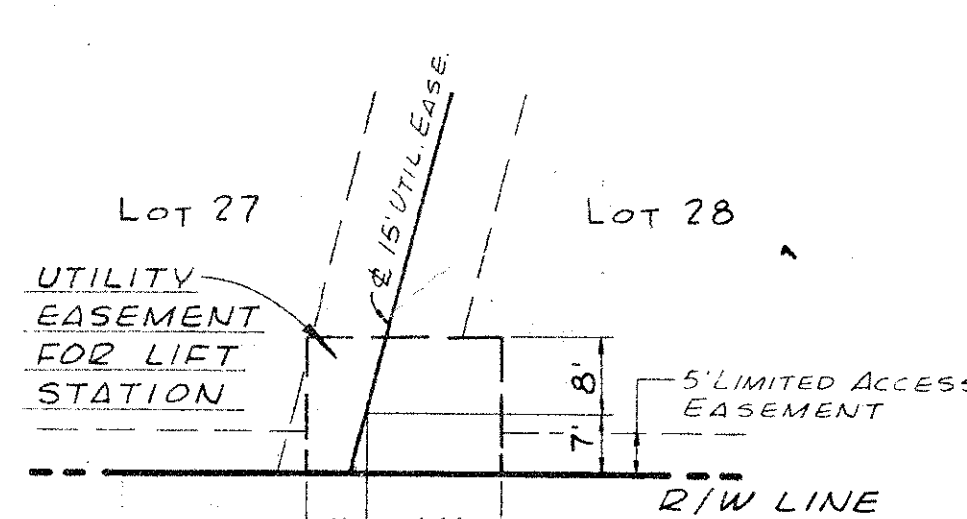
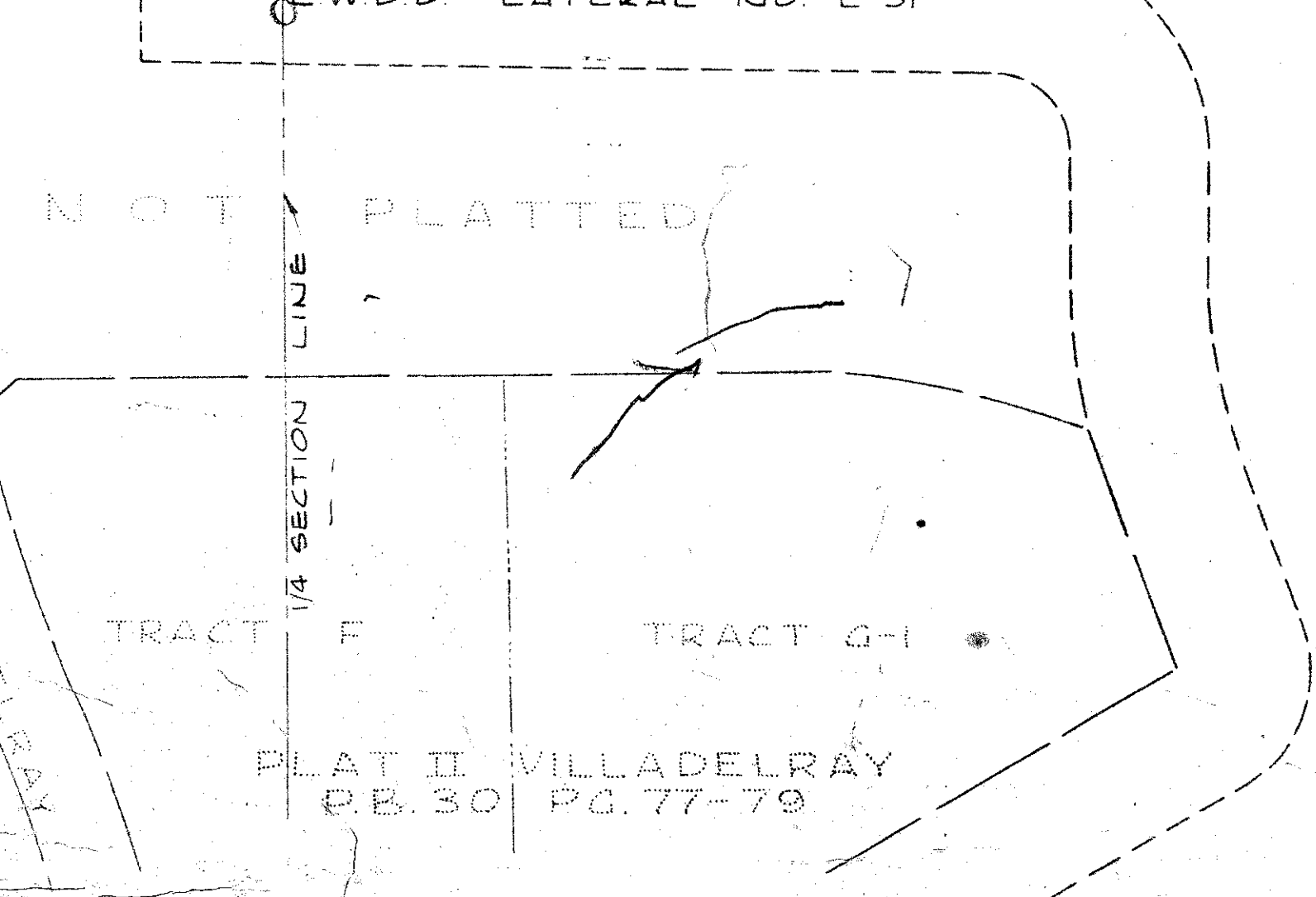
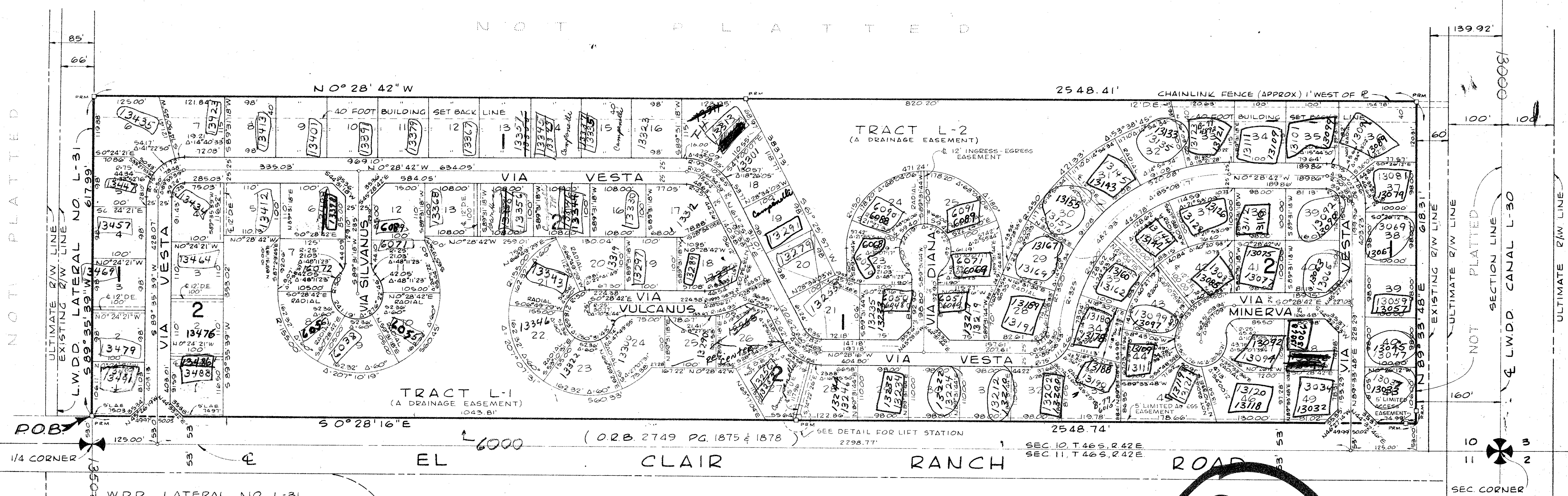
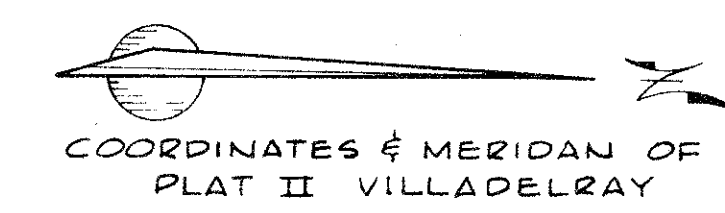


A PLANNED UNIT DEVELOPMENT  
IN VILLADELRAY WEST  
**PLAT NO. 2 OF DELRAY VILLAS**  
IN THE EAST QUARTER (E1/4) OF THE NORTHEAST QUARTER  
(NE1/4) OF SECTION 10, TOWNSHIP 46 S., RANGE 42 E.  
PALM BEACH COUNTY, FLORIDA  
IN 2 SHEETS-SHEET 1 OF 2  
JANUARY 31, 1977

162



36

NOTES:  
 □ INDICATES PRM - PERMANENT REFERENCE MONUMENT  
 ○ INDICATES PCP - PERMANENT CONTROL POINT

DELRAY VILLAS #2

Field Book No. Pg.	ROBERT L. OWEN & ASSOCIATES, INC. ENGINEERS - PLANNERS - SURVEYORS WEST PALM BEACH FLORIDA	PLAT NO. 2 OF 162 DELRAY VILLAS	Date JANUARY 77
Design DM WHITE			Scale 1" = 100'
Drawn GL COSS			Sheet 2
Checked DM WHITE			File No. BF-2252-B
Field			

10/46/72

0325-305

33