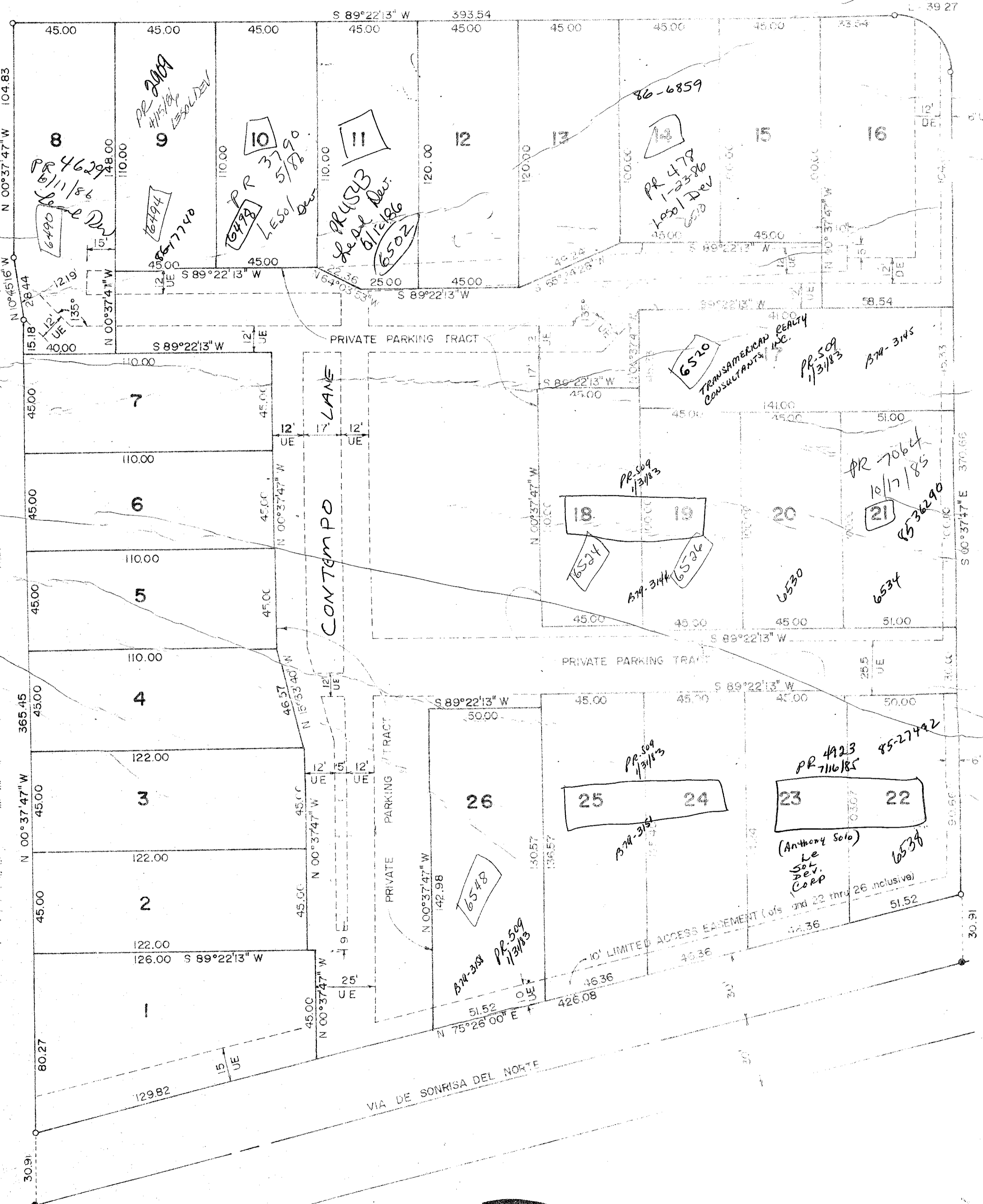


A PLANNED UNIT DEVELOPMENT

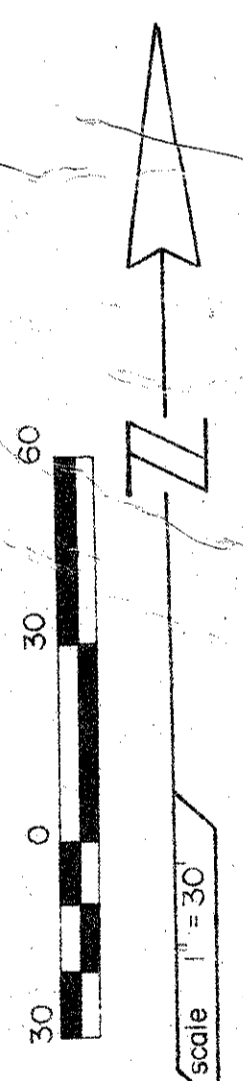
PATIOS DEL MAR CONTEMPO

TRACT 64D
PLAT 100 30 465 70-27

CURVE DATUM
A=90°00'00"
R=25.00
L=39.27



- NOTE:
1. BEARING BASED ON N 00°37'47" WEST ALONG THE WEST LINE OF TRACT "A" AS SHOWN ON PLAT OF PATIOS DEL MAR II,
 2. RECORDED IN PLAT BOOK 32, PAGES 63, PAGE 65, PUBLIC RECORDS OF PALM BEACH COUNTY, FLORIDA.
 3. NO BUILDINGS, TREES, SHRUBS WILL BE PERMITTED IN EASEMENTS.
 4. ● INDICATES PERMANENT CONTROL POINT (P.C.P.)
 5. ○ INDICATES PERMANENT REFERENCE MONUMENT (PRM)
 6. DE INDICATES DRAINAGE EASEMENT.
 7. UE INDICATES UTILITY EASEMENT.



N° UNITS	39
TOTAL AREA	4.29 AC
UNITS PER ACRE	6.06
AREA IN LOTS	76 %
AREA IN HOUSES & PYLMT	56 %
AREA IN OPEN SPACE	

39

27/47/42
0205-023
33
179
SHEET 2 OF 2

PATIOS DEL MAR

THE INSTRUMENT WAS PREPARED BY WALTER A. CORNELL, JR., CIVIL ENGINEER, IN THE DIRECTION OF WALTER A. CORNELL, P.E., WALTER A. CORNELL, JR., 494 S.W. 4th STREET, BOCA RATON, FLORIDA, 33432.