

SOUTHWEST CORNER LUCERNE LAKES HOMES, VILLAGE I, P.U.D., P.B. 33, Pp. 29-30

LUCERNE LAKES HOMES, VILLAGE I, 3rd ADDITION

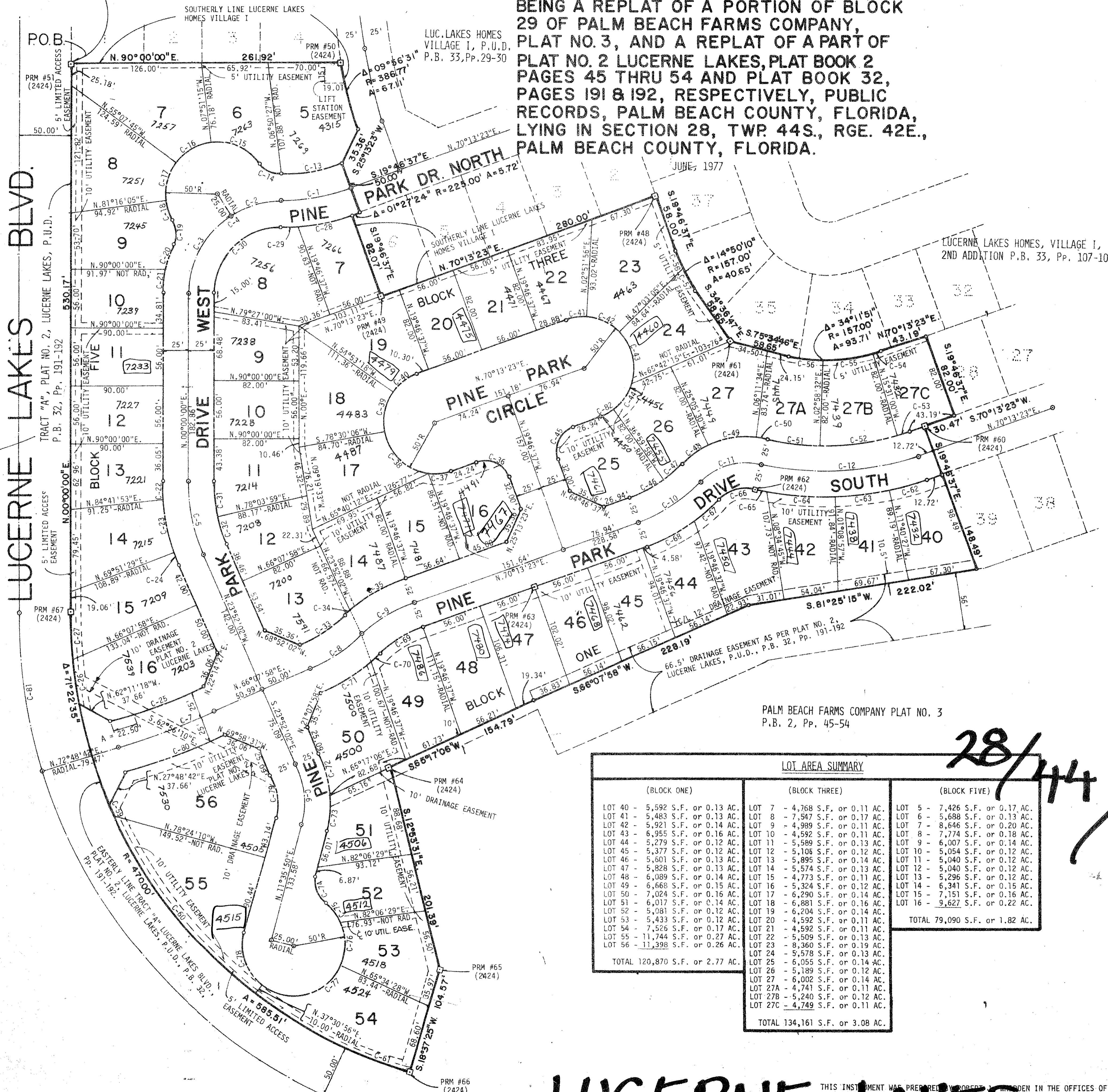
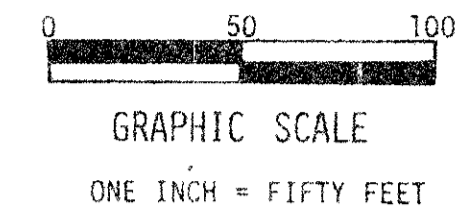
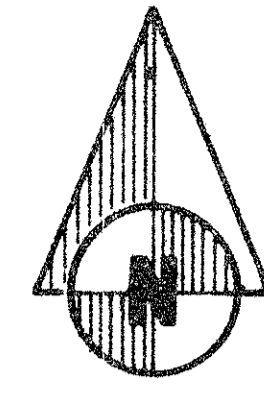
BEING A REPLAT OF A PORTION OF BLOCK 29 OF PALM BEACH FARMS COMPANY, PLAT NO. 3, AND A REPLAT OF A PART OF PLAT NO. 2 LUCERNE LAKES, PLAT BOOK 2 PAGES 45 THRU 54 AND PLAT BOOK 32, PAGES 191 & 192, RESPECTIVELY, PUBLIC RECORDS, PALM BEACH COUNTY, FLORIDA, LYING IN SECTION 28, TWP. 44S., RGE. 42E., PALM BEACH COUNTY, FLORIDA.

183

STATE OF FLORIDA
COUNTY OF PALM BEACH

THIS PLAT WAS FILED FOR RECORD AT
THIS _____ TH DAY OF
AD., 1977 AND DULY RECORDED IN PLAT BOOK
ON PAGES _____ AND _____

JOHN B. DUNKLE, CLERK
CIRCUIT COURT
BY: _____ DC



CURVE DATA									
C. NO.	CENT. ANG.	RADIUS	ARC	CHORD	C. NO.	CENT. ANG.	RADIUS	ARC	CHORD
C-1	19°46'37"	200.00'	69.04'	68.69'	C-42	44°11'09"	50.00'	38.56'	37.61'
C-2	32°25'06"	89.77'	50.79'	50.12'	C-43	61°35'16"	50.00'	53.75'	51.20'
C-3	57°34'54"	89.77'	50.79'	50.12'	C-44	34°21'41"	50.00'	29.99'	29.54'
C-4	90°00'00"	89.77'	141.01'	126.96'	C-45	90°00'00"	25.00'	39.27'	35.36'
C-5	23°52'02"	175.00'	72.90'	72.37'	C-46	17°13'21"	132.00'	39.68'	39.53'
C-6	35°27'52"	75.00'	46.42'	45.69'	C-47	09°24'24"	132.00'	21.67'	21.65'
C-7	06°40'44"	840.00'	97.92'	97.86'	C-48	21°18'52"	85.00'	31.62'	31.44'
C-8	20°52'12"	160.00'	58.28'	57.96'	C-49	31°17'04"	85.00'	46.41'	45.84'
C-9	24°57'37"	145.73'	63.49'	62.99'	C-50	08°13'40"	85.00'	12.21'	12.20'
C-10	26°37'45"	157.00'	72.97'	72.31'	C-51	11°26'42"	239.00'	47.74'	47.66'
C-11	60°49'36"	60.00'	63.70'	60.75'	C-52	18°29'32"	239.00'	77.14'	76.80'
C-12	34°11'51"	264.00'	157.57'	155.24'	C-53	04°15'37"	239.00'	17.77'	17.77'
C-13	19°46'37"	175.00'	60.41'	60.11'	C-54	04°15'37"	157.00'	11.67'	11.67'
C-14	55°07'22"	25.00'	24.05'	23.14'	C-55	18°29'32"	157.00'	50.67'	50.45'
C-15	62°58'37"	50.00'	54.96'	52.23'	C-56	11°26'42"	157.00'	31.36'	31.31'
C-16	47°16'30"	50.00'	41.26'	40.10'	C-57	07°08'30"	157.00'	19.57'	19.56'
C-17	43°36'10"	50.00'	38.05'	37.14'	C-58	07°41'40"	157.00'	21.08'	21.07'
C-18	21°13'40"	50.00'	18.53'	18.42'	C-59	01°13'09"	470.00'	10.00'	10.00'
C-19	55°07'22"	25.00'	24.05'	23.14'	C-60	27°46'14"	470.00'	227.80'	225.58'
C-20	14°31'29"	114.77'	29.10'	29.02'	C-61	18°53'31"	470.00'	154.97'	154.27'
C-21	10°38'18"	114.77'	21.31'	21.28'	C-62	08°06'10"	289.00'	40.37'	40.84'
C-22	05°18'07"	200.00'	18.51'	18.50'	C-63	10°31'29"	289.00'	53.09'	53.01'
C-23	14°50'24"	200.00'	51.80'	51.66'	C-64	13°30'41"	289.00'	68.15'	67.99'
C-24	03°43'31"	200.00'	13.00'	13.00'	C-65	02°03'31"	289.00'	10.38'	10.38'
C-25	06°40'44"	815.00'	95.00'	94.95'	C-66	60°49'36"	35.00'	37.16'	35.43'
C-26	05°03'09"	470.00'	41.45'	41.43'	C-67	10°13'09"	182.00'	32.46'	32.42'
C-27	05°49'45"	470.00'	47.82'	47.80'	C-68	16°24'36"	182.00'	52.13'	51.95'
C-28	14°27'51"	225.00'	56.80'	56.65'	C-69	24°57'37"	120.73'	52.60'	52.18'
C-29	03°51'27"	225.00'	15.14'	15.14'	C-70	03°33'18"	185.00'	11.48'	11.48'
C-30	90°00'00"	64.77'	101.74'	91.60'	C-71	17°18'55"	185.00'	55.91'	55.70'
C-31	N 56°01'	150.00'	31.24'	31.19'	C-72	25°34'28"	100.00'	44.66'	44.27'
C-32	17°56'01"	150.00'	31.24'	31.19'	C-73	09°53'23"	100.00'	17.26'	17.24'
C-33	20°52'12"	135.00'	49.17'	48.90'	C-74	70°31'44"	25.00'	30.77'	28.87'
C-34	03°10'01"	170.73'	9.44'	9.44'	C-75	30°59'49"	50.00'	27.05'	26.72'
C-35	21°47'36"	170.73'	64.94'	64.94'	C-76	52°21'37"	50.00'	45.69'	44.12'
C-36	90°00'00"	25.00'	35.36'	35.36'	C-77	103°05'24"	50.00'	89.96'	78.31'
C-37	24°31'28"	21.40'	21.24'	21.24'	C-78	15°04'24"	50.00'	55.92'	53.05'
C-38	73°45'15"	64.36'	60.01'	60.01'	C-79	36°29'52"	50.00'	30.95'	30.46'
C-39	46°35'45"	60.00'	40.68'	39.56'	C-80	06°40'44"	100.83'	100.83'	100.77'
C-40	35°06'42"	50.00'	30.62'	30.16'	C-81	17°11'19"	50.00'	156.00'	155.41'
C-41	22°38'33"	50.00'	19.76'	19.63'	C-82	17°13'21"	50.00'	15.03'	14.97'

PALM BEACH FARMS COMPANY PLAT NO. 3
P.B. 2, Pp. 45-54

LOT AREA SUMMARY		
(BLOCK ONE)	(BLOCK THREE)	(BLOCK FIVE)
LOT 40 - 5,592 S.F. or 0.13 AC.	LOT 7 - 4,768 S.F. or 0.11 AC.	LOT 5 - 7,426 S.F. or 0.17 AC.
LOT 41 - 5,483 S.F. or 0.13 AC.	LOT 8 - 7,547 S.F. or 0.17 AC.	LOT 6 - 5,688 S.F. or 0.13 AC.
LOT 42 - 5,921 S.F. or 0.14 AC.	LOT 9 - 4,989 S.F. or 0.11 AC.	LOT 7 - 8,646 S.F. or 0.20 AC.
LOT 43 - 6,955 S.F. or 0.16 AC.	LOT 10 - 4,592 S.F. or 0.11 AC.	LOT 8 - 7,774 S.F. or 0.18 AC.
LOT 44 - 5,279 S.F. or 0.12 AC.	LOT 11 - 5,589 S.F. or 0.13 AC.	LOT 9 - 6,007 S.F. or 0.14 AC.
LOT 45 - 5,377 S.F. or 0.12 AC.	LOT 12 - 5,106 S.F. or 0.12 AC.	LOT 10 - 5,054 S.F. or 0.12 AC.
LOT 46 - 5,601 S.F. or 0.13 AC.	LOT 13 - 5,895 S.F. or 0.14 AC.	LOT 11 - 5,040 S.F. or 0.12 AC.
LOT 47 - 5,828 S.F. or 0.13 AC.	LOT 14 - 5,574 S.F. or 0.13 AC.	LOT 12 - 5,040 S.F. or 0.12 AC.
LOT 48 - 6,089 S.F. or 0.14 AC.	LOT 15 - 4,773 S.F. or 0.11 AC.	LOT 13 - 5,296 S.F. or 0.12 AC.
LOT 49 - 6,668 S.F. or 0.15 AC.	LOT 16 - 5,324 S.F. or 0.12 AC.	LOT 14 - 6,341 S.F. or 0.15 AC.
LOT 50 - 7,024 S.F. or 0.16 AC.	LOT 17 - 6,290 S.F. or 0.14 AC.	LOT 15 - 7,151 S.F. or 0.16 AC.
LOT 51 - 6,017 S.F. or 0.14 AC.	LOT 18 - 6,881 S.F. or 0.16 AC.	LOT 16 - 9,627 S.F. or 0.22 AC.
LOT 52 - 5,081 S.F. or 0.12 AC.	LOT 19 - 6,204 S.F. or 0.14 AC.	TOTAL 79,090 S.F. or 1.82 AC.
LOT 53 - 5,433 S.F. or 0.12 AC.	LOT 20 - 4,592 S.F. or 0.11 AC.	
LOT 54 - 7,526 S.F. or 0.17 AC.	LOT 21 - 4,592 S.F. or 0.11 AC.	
LOT 55 - 11,744 S.F. or 0.27 AC.	LOT 22 - 5,509 S.F. or 0.13 AC.	
LOT 56 - 11,398 S.F. or 0.26 AC.	LOT 23 - 8,360 S.F. or 0.19 AC.	
	LOT 24 - 5,578 S.F. or 0.13 AC.	
	LOT 25 - 6,055 S.F. or 0.14 AC.	
	LOT 26 - 5,189 S.F. or 0.12 AC.	
	LOT 27 - 6,002 S.F. or 0.14 AC.	
	LOT 27A - 4,741 S.F. or 0.11 AC.	
	LOT 27B - 5,240 S.F. or 0.12 AC.	
	LOT 27C - 4,749 S.F. or 0.11 AC.	
	TOTAL 134,161 S.F. or 3.08 AC.	

28/114 / 42

MORTGAGEE'S CONSENT
STATE OF FLORIDA
COUNTY OF PALM BEACH
THE UNDERSIGNED BANK, HEREBY CERTIFIES THAT IT IS THE HOLDER OF THE MORTGAGE UPON THE HEREIN DESCRIBED PROPERTY AND DOES HEREBY CONSENT TO THE DEDICATION OF THE LANDS DESCRIBED IN THE DEDICATION HEREON TO THE OWNER THEREOF, AND AGREES THAT ITS MORTGAGE WHICH IS RECORDED IN OFFICIAL RECORD BOOK NO. _____ PAGE _____ OF THE PUBLIC RECORDS OF PALM BEACH COUNTY, FLORIDA, SHALL BE SUBORDINATED TO THE DEDICATION SHOWN HEREON.

IN WITNESS WHEREOF THE UNDERSIGNED BANK, HAS CAUSED THESE PRESENTS TO BE SIGNED BY ITS _____ AND ATTESTED TO BY _____

AND ITS OFFICIAL SEAL TO BE AFFIXED HERETO, BY AND WITH THE AUTHORITY OF ITS BOARD OF DIRECTORS THIS 25th DAY OF November, AD 1977.

ATTEST: *Michael R. Parley* FIRST NATIONAL BANK AND TRUST COMPANY
RIVIERA BEACH
BY: *Jimmy R. Rice*

ACKNOWLEDGEMENT:
STATE OF FLORIDA
COUNTY OF PALM BEACH

BEFORE ME PERSONALLY APPEARED **TIMOTHY E. POE AND EDWARD R. BOSLEY** KNOWN AND KNOWN TO ME TO BE THE INDIVIDUALS DESCRIBED IN AND WHO EXECUTED THE FOREGOING INSTRUMENT AS **Sr. Vice Pres. and Vice Pres.** RESPECTIVELY, OF THE ABOVE NAMED BANK, AND THEY ACKNOWLEDGED TO AND BEFORE ME THAT THEY EXECUTED SUCH AS **Sr. Vice President and Vice President** AND **Vice President** OF SAID FIRST NATIONAL BANK OF TRUST COMPANY OF RIVIERA BEACH, AND THAT THE SEAL AFFIXED TO THE FOREGOING INSTRUMENT IS THE OFFICIAL SEAL OF SAID BANK, AND THAT IT WAS AFFIXED TO SAID INSTRUMENT BY DUE AND REGULAR CORPORATE AUTHORITY, AND THAT THEY HAVE FREELY AND KNOWINGLY MADE THE FREE AND DEED OF SAID BANK.

WITNESS MY HAND AND OFFICIAL SEAL THIS 25th DAY OF November, AD 1977.

NOTARY PUBLIC: *A. Dune Fox*
MY COMMISSION EXPIRES _____

0277-313

LUCERNE LAKES

THIS INSTRUMENT WAS PREPARED BY ROBERT J. HODDIN IN THE OFFICES OF BENCH MARK LAND SURVEYING AND MAPPING, INC., 220 PALM BEACH LAKES BLVD., SUITE 109, WEST PALM BEACH, FLORIDA, PHONE 689-2111.

BENCH MARK
land surveying and mapping, inc.

DRAWN R.J.W.	FIELD BOOK NO. PG.	DATE 6-18-77	JOB NO. 2405	SHEET 2 OF 2
DESIGNED R.J.W.	CHECKED R.J.W.	SCALE 1"=50'	DRAWING NO.	