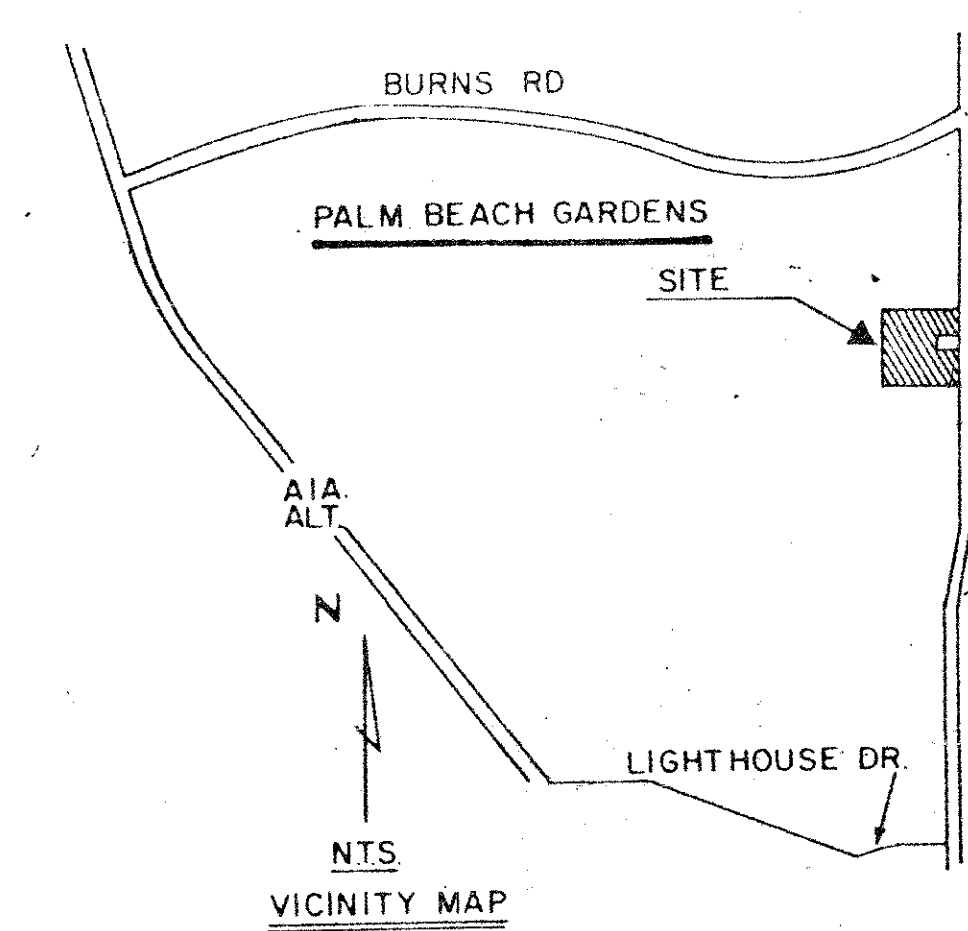
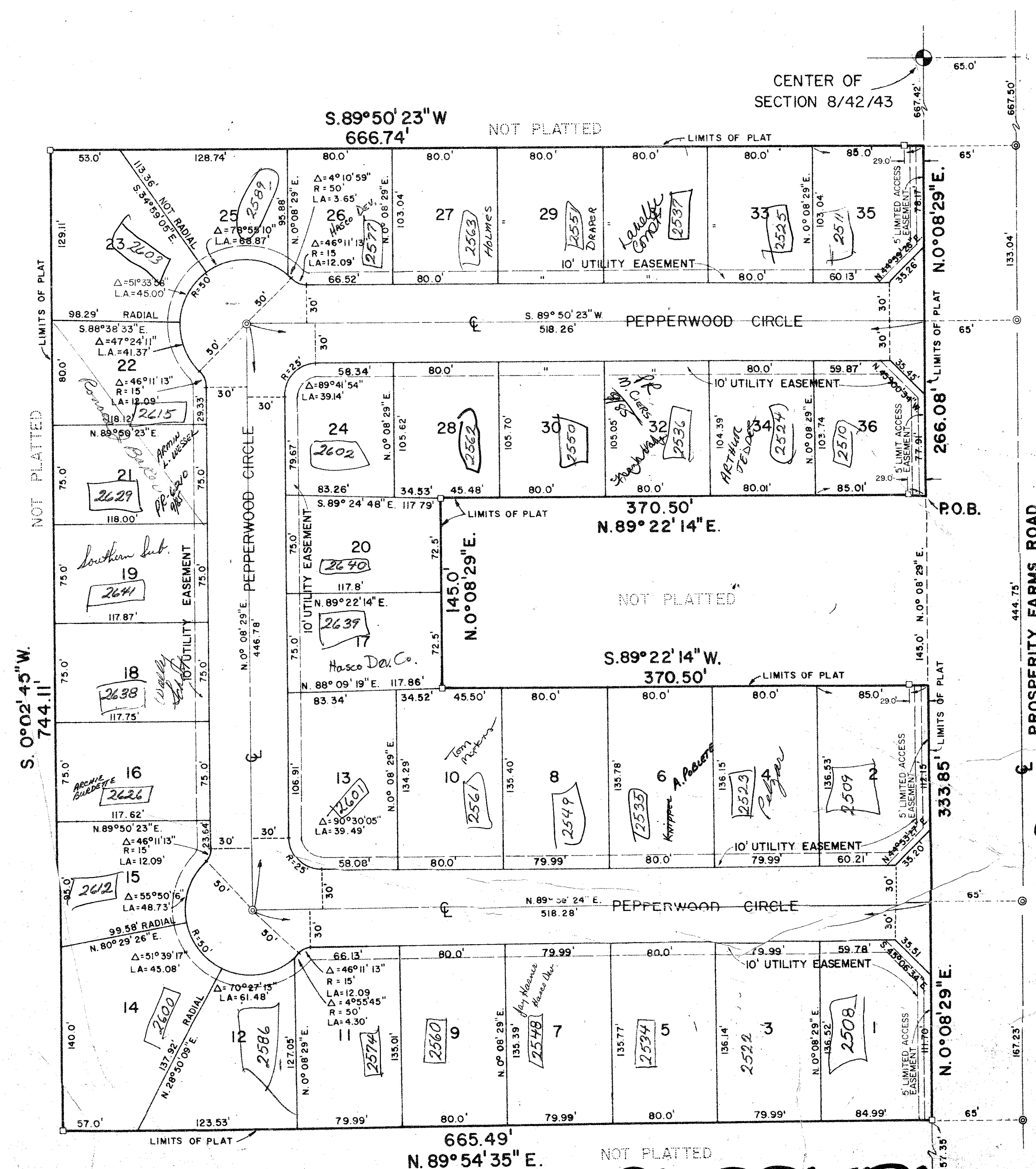


PLAT OF PEPPERWOOD

IN SECTION 8, TOWNSHIP 42 SOUTH, RANGE 43 EAST,
PALM BEACH COUNTY, FLORIDA.



185



NOTES:

- The bearings shown herein are based upon an "assumed" bearing of North 0° 08' 29" East along the North-South quarter section line of Section 8, Township 42 South, Range 43 East, Palm Beach County, Florida.
- = Denotes Easement Reference Monuments (E.R.M.)
- ⊙ = Denotes Permanent Control Points (P.C.)
- There shall be no buildings or structures placed on public utility easements.
- There shall be no buildings or planting of trees or shrubs on drainage easements.

13

8/42/43

Turnout
RS
Quadrant 13

33

This instrument was prepared by Kenneth L. Scrape, at the office of William G. Wallace, Inc. 321 Northlake Blvd., Suite 113, North Palm Beach, Florida, 33480.

1000-138

PLAT OF PEPPERWOOD

WILLIAM G. WALLACE, INC. Consulting Engineers & Land Surveyors 321 Northlake Blvd., Suite 113, North Palm Beach, Florida		
FIELD: K.N.	JOB NO: J77-113	FILE NO: 8/42/43
OFFICE: CAW, II	DATE: AUG. 1977	DWG. NO: 77-665
CK'D: C.W.	REF: P.B.26 PG. 12	SHEET 2 OF 2

PEPPERWOOD

