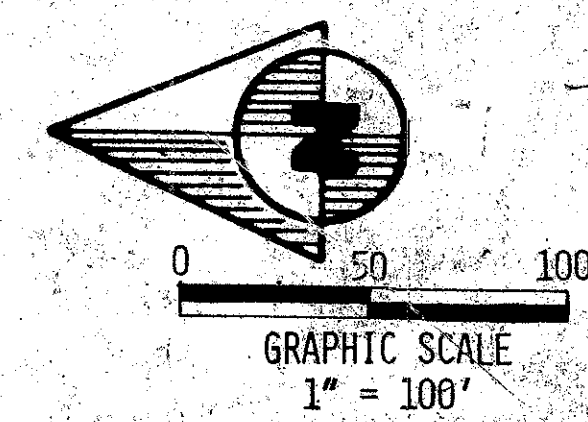


A Planned Unit Development FIELDBROOK

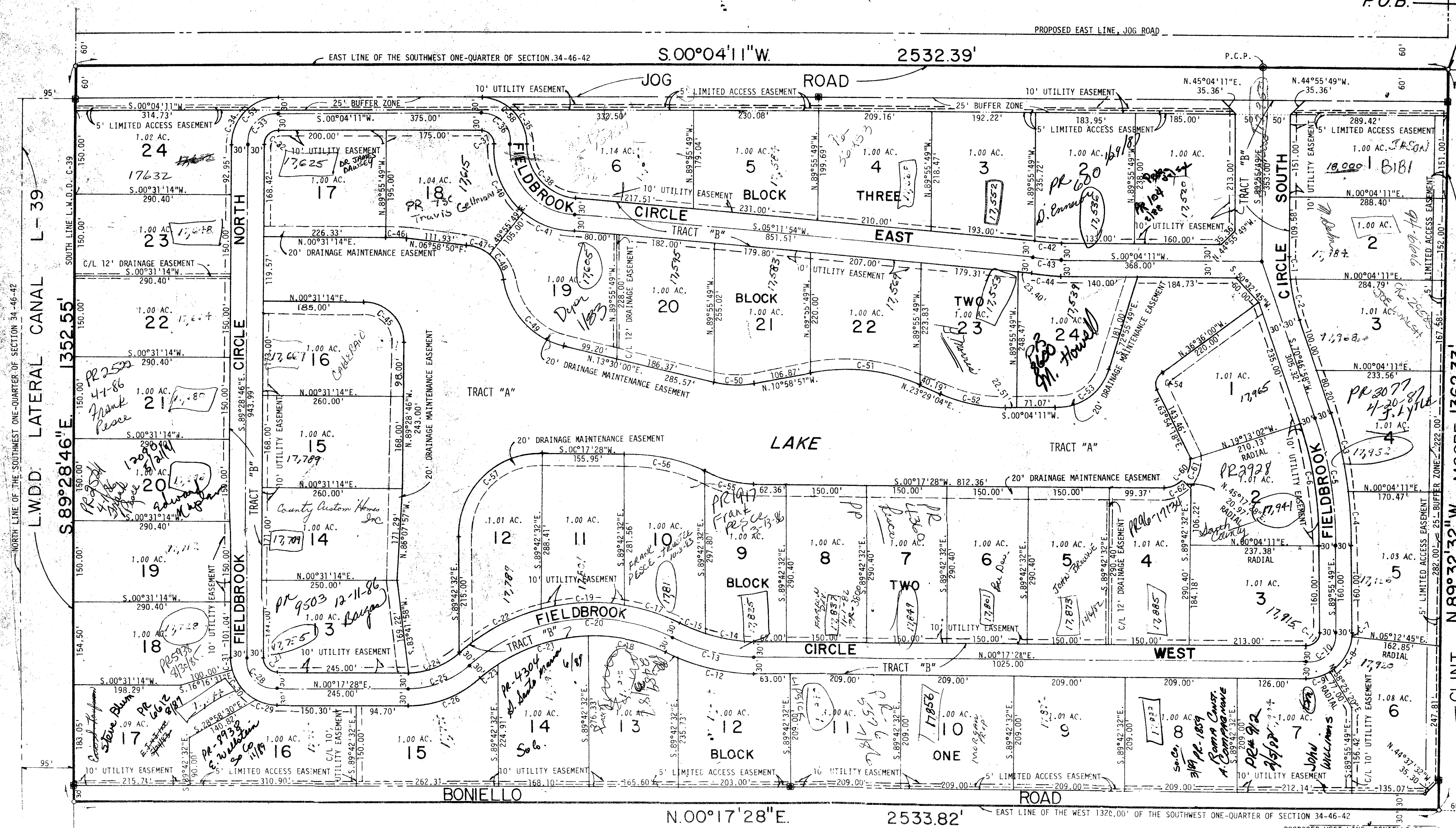
Lying in the Southwest One-quarter
of Section 34, Township 46 South,
Range 42 East, Palm Beach County,
Florida August 1977



PLANNED UNIT DEVELOPMENT TABULATIONS

TOTAL AREA THIS PLAT	78.94 Acres
LESS ROAD RIGHTS OF WAY	13.88 Acres
LESS JOG ROAD BUFFER ZONE	1.14 Acres
EQUALS EFFECTIVE BASE RESIDENTIAL	63.92 Acres
APPLICABLE DENSITY FACTOR	RE (1 Unit/Acre)
TOTAL UNITS PERMITTED	83 UNITS
TOTAL UNITS THIS PLAT	54 Units (Proposed)
OPEN SPACE THIS PLAT	60.82 Acres (Proposed)
DENSITY BASED ON GROSS ACREAGE ZONED	0.645 UNITS PER ACRE

STATE OF FLORIDA
COUNTY OF PALM BEACH
THIS PLAT WAS FILED FOR
RECORD AT
THIS 13TH DAY OF
AUGUST 1977 AND DULY
CORDED IN PLAT BOOK
NO. 1119 ON PAGES
1 AND 2
JOHN B. DUNKLE, CLERK
CIRCUIT COURT
BY: _____ DC



NORTH LINE OF THE SOUTHWEST ONE-QUARTER OF SECTION 34-46-42
L.W.D.D. LATERAL CANAL L-39
S.89°28'46"E. 1352.55'
SOUTH LINE L.W.D.D. C-39

CLINT N.89°32'32"W. MOORE 1362.33'
L.W.D.D. LATERAL CANAL L-40
SOUTH LINE L.W.D.D. CANAL L-40

C. NO.	CENT. ANG.	RADIUS	ARC	CHORD	TANGENT
C-1	82°57'13"	350.00'	42.50'	42.44'	21.23'
C-2	179°14'12"	375.00'	76.30'	75.16'	37.50'
C-3	179°14'12"	375.00'	76.30'	75.16'	37.50'
C-4	82°57'13"	350.00'	42.50'	42.44'	21.23'
C-5	90°00'00"	55.00'	55.00'	55.00'	0.00'
C-6	90°00'00"	55.00'	55.00'	55.00'	0.00'
C-7	90°00'00"	55.00'	55.00'	55.00'	0.00'
C-8	90°00'00"	55.00'	55.00'	55.00'	0.00'
C-9	90°00'00"	55.00'	55.00'	55.00'	0.00'
C-10	90°00'00"	55.00'	55.00'	55.00'	0.00'
C-11	90°00'00"	55.00'	55.00'	55.00'	0.00'
C-12	90°00'00"	55.00'	55.00'	55.00'	0.00'
C-13	90°00'00"	55.00'	55.00'	55.00'	0.00'
C-14	90°00'00"	55.00'	55.00'	55.00'	0.00'
C-15	90°00'00"	55.00'	55.00'	55.00'	0.00'
C-16	90°00'00"	55.00'	55.00'	55.00'	0.00'
C-17	169°00'30"	90.00'	10.00'	10.00'	53.43'
C-18	76°14'12"	375.00'	76.30'	75.16'	37.50'
C-19	79°42'13"	390.00'	80.00'	78.60'	39.75'
C-20	85°00'00"	55.00'	55.00'	55.00'	0.00'
C-21	90°00'00"	55.00'	55.00'	55.00'	0.00'
C-22	90°00'00"	55.00'	55.00'	55.00'	0.00'
C-23	90°00'00"	55.00'	55.00'	55.00'	0.00'
C-24	90°00'00"	55.00'	55.00'	55.00'	0.00'
C-25	90°00'00"	55.00'	55.00'	55.00'	0.00'
C-26	90°00'00"	55.00'	55.00'	55.00'	0.00'
C-27	90°00'00"	55.00'	55.00'	55.00'	0.00'
C-28	90°00'00"	55.00'	55.00'	55.00'	0.00'
C-29	90°00'00"	55.00'	55.00'	55.00'	0.00'
C-30	90°00'00"	55.00'	55.00'	55.00'	0.00'
C-31	90°00'00"	55.00'	55.00'	55.00'	0.00'
C-32	90°00'00"	55.00'	55.00'	55.00'	0.00'
C-33	89°42'32"	55.00'	55.00'	55.00'	0.00'
C-34	44°12'00"	85.00'	85.96'	77.48'	54.57'
C-35	44°54'03"	85.00'	85.96'	77.48'	54.57'
C-36	90°00'00"	55.00'	55.00'	55.00'	0.00'
C-37	90°00'00"	55.00'	55.00'	55.00'	0.00'
C-38	90°00'00"	55.00'	55.00'	55.00'	0.00'
C-39	90°00'00"	55.00'	55.00'	55.00'	0.00'
C-40	90°00'00"	55.00'	55.00'	55.00'	0.00'
C-41	90°00'00"	55.00'	55.00'	55.00'	0.00'
C-42	90°00'00"	55.00'	55.00'	55.00'	0.00'
C-43	90°00'00"	55.00'	55.00'	55.00'	0.00'
C-44	90°00'00"	55.00'	55.00'	55.00'	0.00'
C-45	90°00'00"	55.00'	55.00'	55.00'	0.00'
C-46	90°00'00"	55.00'	55.00'	55.00'	0.00'
C-47	90°00'00"	55.00'	55.00'	55.00'	0.00'
C-48	90°00'00"	55.00'	55.00'	55.00'	0.00'
C-49	67°39'04"	150.00'	177.11'	167.00'	100.51'
C-50	34°28'51"	175.00'	175.00'	174.77'	37.97'
C-51	34°27'55"	350.00'	210.54'	209.29'	109.39'
C-52	23°24'55"	400.00'	123.00'	121.75'	62.17'
C-53	73°00'00"	100.00'	122.41'	118.97'	74.00'
C-54	79°29'42"	25.00'	34.69'	31.97'	20.79'
C-55	25°22'37"	204.50'	90.58'	89.84'	46.04'
C-56	25°22'37"	350.00'	155.02'	153.76'	78.80'
C-57	30°00'00"	153.30'	240.33'	216.38'	153.00'
C-58	90°00'00"	85.00'	133.52'	120.21'	85.00'
C-59	89°42'32"	85.00'	133.52'	120.21'	85.00'
C-60	90°00'00"	50.00'	71.60'	50.63'	50.63'
C-61	45°00'00"	50.00'	71.60'	50.63'	50.63'
C-62	45°00'00"	50.00'	71.60'	50.63'	50.63'

1000-119

BENCH MARK
land surveying and mapping, inc.

CONRAD W. SCHAEFER CONSULTING ENGINEERS, INC.
PALM BEACH COUNTY, FLORIDA

FIELDBROOK

DATE: 7/13/77
SCALE: 1"=100'
BY: CWS

34/8