

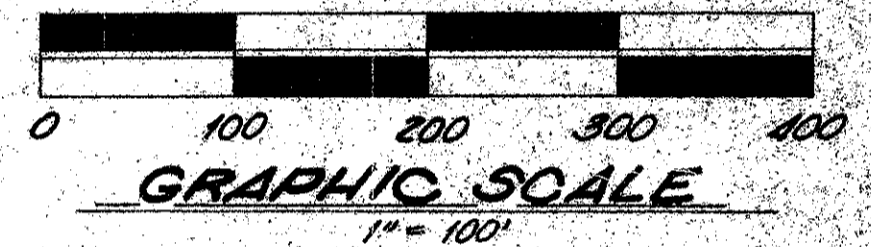
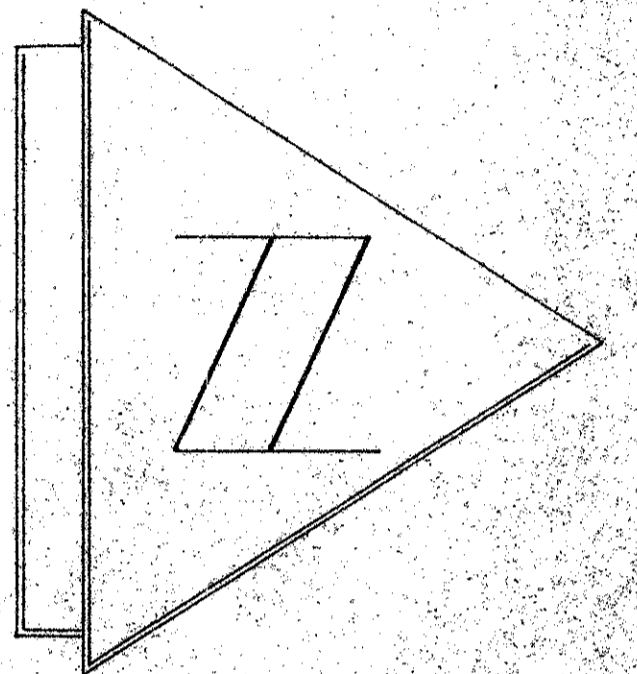
A PORTION OF LOGGERS RUN, A PLANNED UNIT DEVELOPMENT

# TAMARRON

## A RESUBDIVISION OF TRACT H, S-2 AND A PORTION OF TRACT S-1 OF BOUNDARY PLAT OF ORIOLE COUNTRY (PLAT BOOK 32 PAGES 175-190)

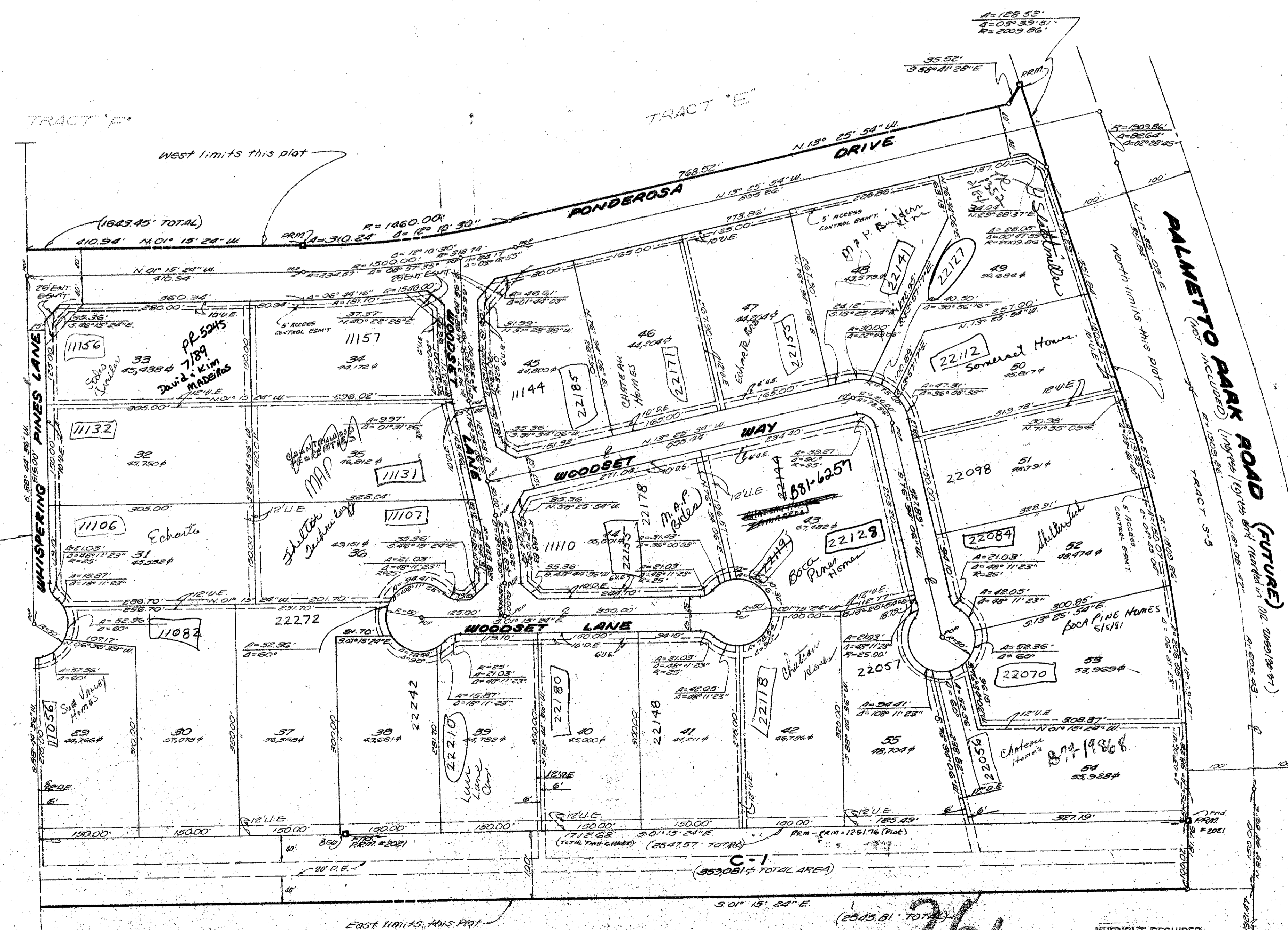
### SECTION 26, TOWNSHIP 47 SOUTH, RANGE 41 EAST PALM BEACH COUNTY, FLORIDA

11



MATCH LINE "B" THIS SHEET SEE MATCH LINE "A" SHEET 2

THIS INSTRUMENT PREPARED BY:  
KEITH SCHNARS  
LAND SURVEYING SCIENCES, P.A.  
BY: THOMAS F. SCHLINGS, P.L.C. #2220



0275-319

34-11

U.E. denotes Utility Easement  
D.E. denotes Drainage Easement

# TAMARRON

26/47/41