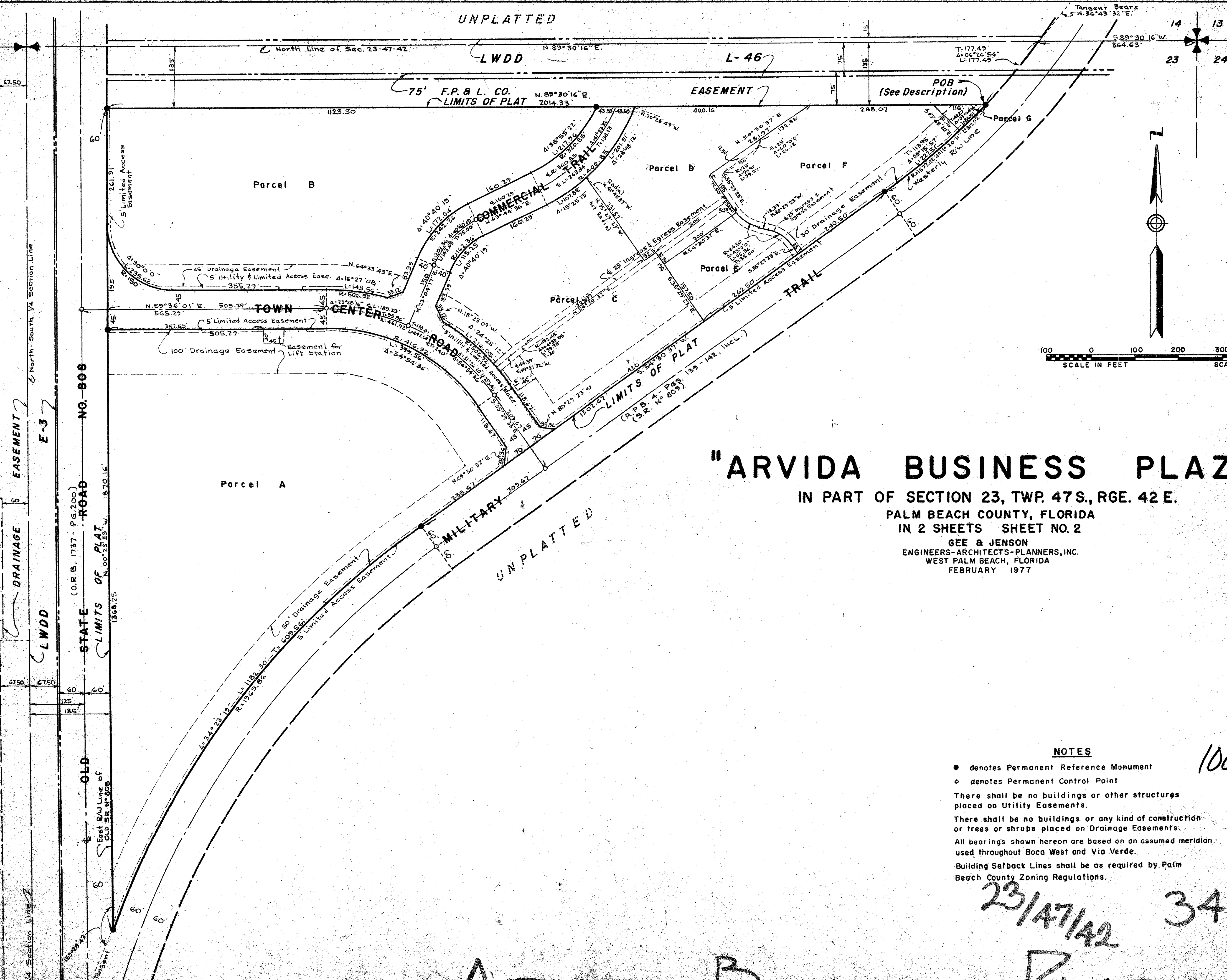
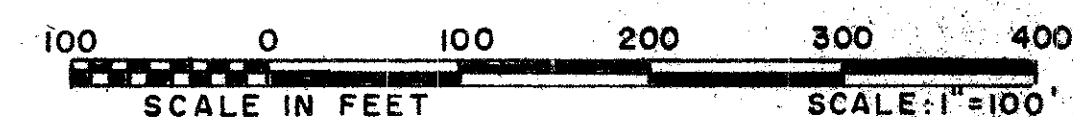


UNPLATTED

15

STATE OF FLORIDA
 COUNTY OF PALM BEACH
 This Plat was filed for record of this day of 1977, and duly recorded in Plat Book No. on page
 By JOHN B. DUNKLE, Clerk Circuit Court, D.C.



"ARVIDA BUSINESS PLAZA"

IN PART OF SECTION 23, TWP. 47 S., RGE. 42 E.
 PALM BEACH COUNTY, FLORIDA
 IN 2 SHEETS SHEET NO. 2

GEE & JENSON
 ENGINEERS-ARCHITECTS-PLANNERS, INC.
 WEST PALM BEACH, FLORIDA
 FEBRUARY 1977

NOTES

- denotes Permanent Reference Monument
- denotes Permanent Control Point
- There shall be no buildings or other structures placed on Utility Easements.
- There shall be no buildings or any kind of construction or trees or shrubs placed on Drainage Easements.
- All bearings shown hereon are based on an assumed meridian used throughout Boca West and Via Verde.
- Building Setback Lines shall be as required by Palm Beach County Zoning Regulations.

1000-120

23/47/42

34-15

ARVIDA BUSINESS PLAZA