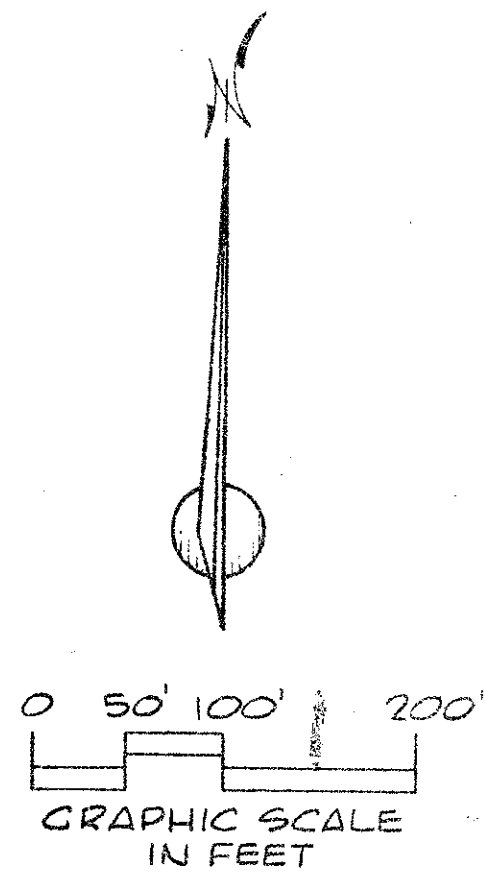


A PLANNED UNIT DEVELOPMENT PLAT OF HORSESHOE ACRES WEST IN 7 SHEETS-SHEET 3 OF 7

SEE SHEET 2



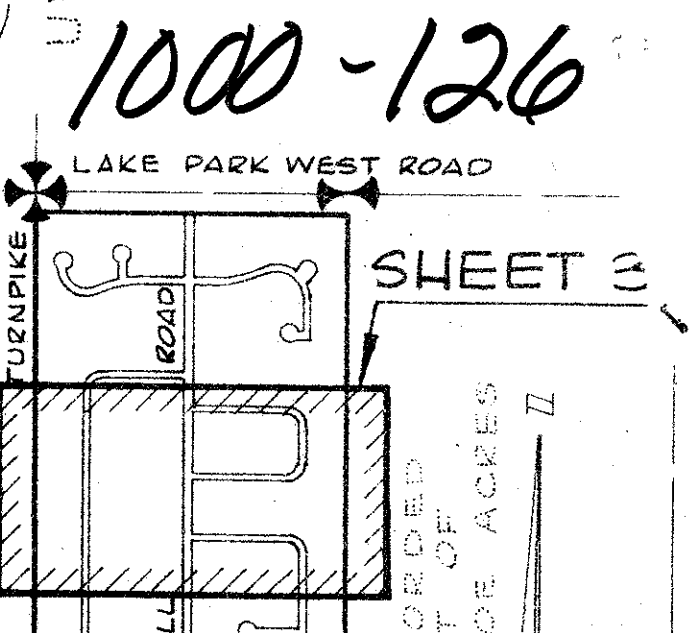
51



FLORIDA'S TURNPIKE

VARIABLE WIDTH
12' EQUESTRIAN EASEMENT
VARIABLE WIDTH
5202.31'

EAST LINE OF THE WEST 1/2 OF SEC. 23/42/42
UNRECORDED PLAT OF HORSESHOE ACRES



29

34
AT 51
OF

Field Book
No. L-78 Pg. 40
Design
J.C. YESTE
Drawn
G.L. COSS
Checked
D.M. WHITE
FIELD
H. BLINN

ROBERT E. OWEN & ASSOCIATES, INC.
ENGINEERS · PLANNERS · SURVEYORS
WEST PALM BEACH
FLORIDA

HORSESHOE ACRES WEST

Date
76-1058
Scale
1" = 100'
Sheet
3
of 7
File
No. BF-2253

SEE HORSESHOE ACRES

23476
1/21/92
All plans
plans
notes

SEE SHEET 4

HC 316
CF 75P24