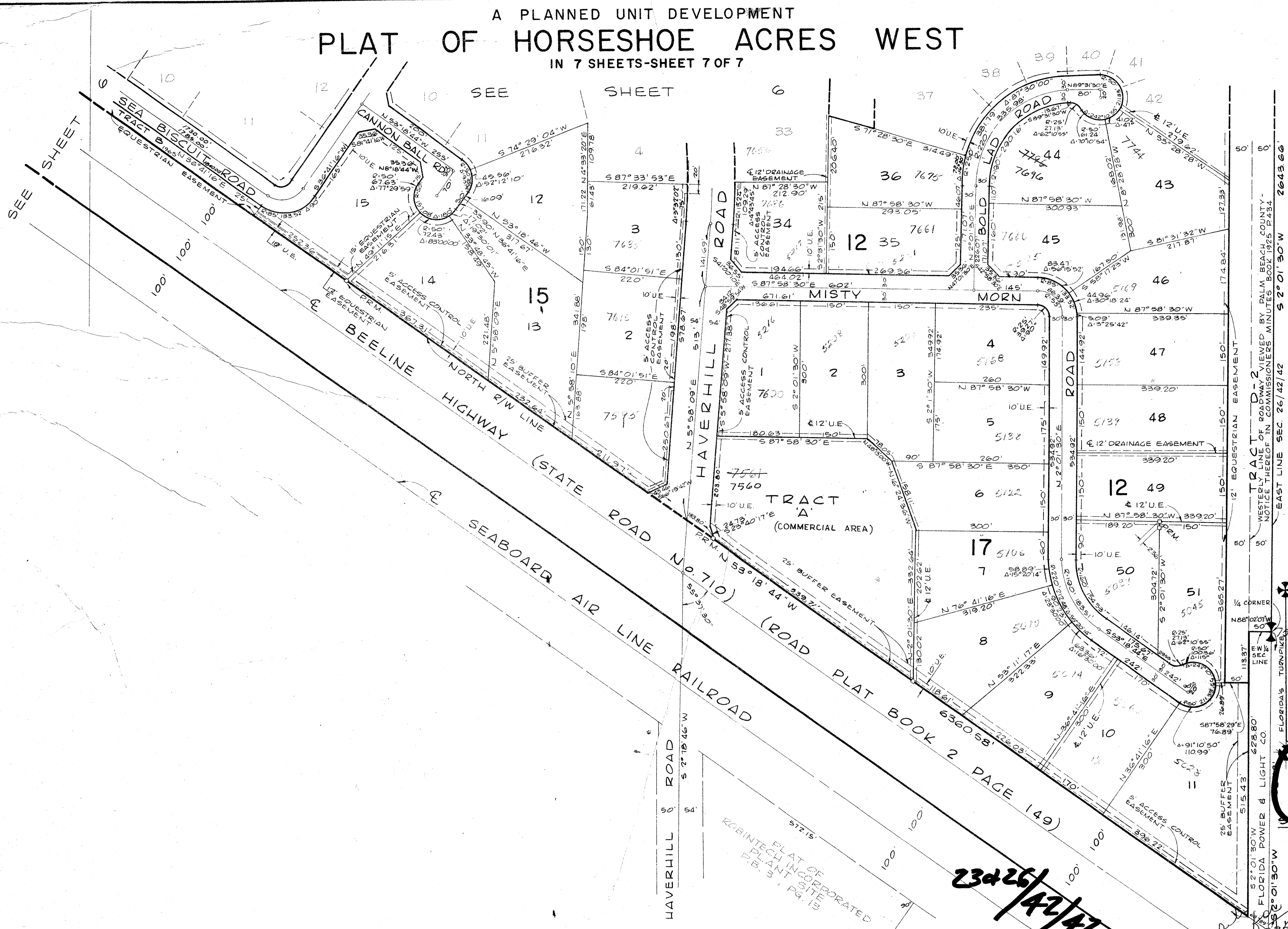


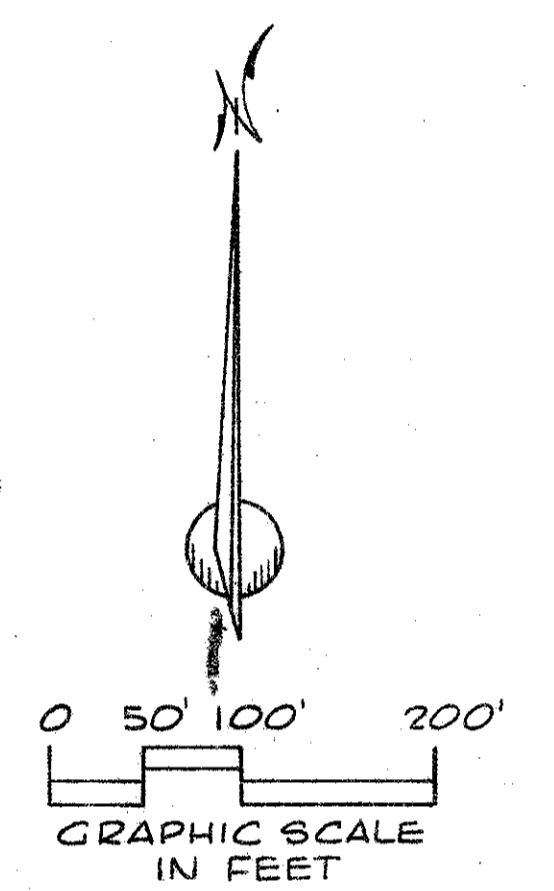
A PLANNED UNIT DEVELOPMENT
PLAT OF HORSESHOE ACRES WEST
 IN 7 SHEETS-SHEET 7 OF 7

SEE SHEET 5

SEE SHEET 6

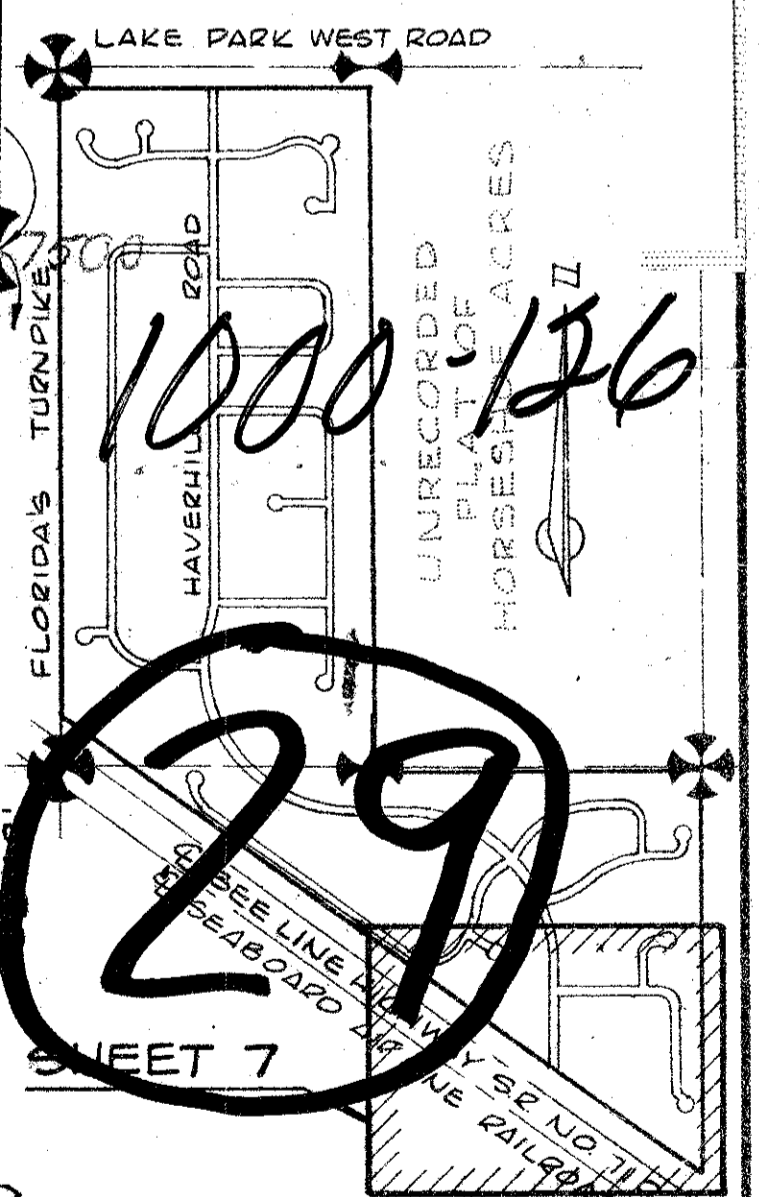


55



NOT PLATTED

TRACT D-2
 WESTERLY LINE OF ROADWAY VIEWED BY PALM BEACH COUNTY -
 NOTICE THEREOF IN COMMISSIONERS' MINUTES BOOK 1925 P.434
 EAST LINE SEC. 26/42/42 S 2° 01' 30" W 2643.66'



KEY MAP
 SCALE: 1"=1500'

34
 PLAT 55

HORSESHOE ACRES

Field Book
 No. L-78 Pg. 40
 Design
 J.C. YESTE
 Drawn
 G.L. GOSS
 Checked
 D.M. WHITE
 Field
 H. BLINN

ROBERT E. OWEN & ASSOCIATES, INC.
 ENGINEERS · PLANNERS · SURVEYORS
 WEST PALM BEACH
 FLORIDA

PLAT 55
 OF
 HORSESHOE ACRES WEST

Date
 Scale
 1" = 100'
 Sheet
 7
 of 7
 File
 No. BF-2253

23426/42/42

34
 76-1058

11 316
 11 75P 23