

PLAT NO. 4

(A PLANNED UNIT DEVELOPMENT)

EASTPOINTE COUNTRY CLUB

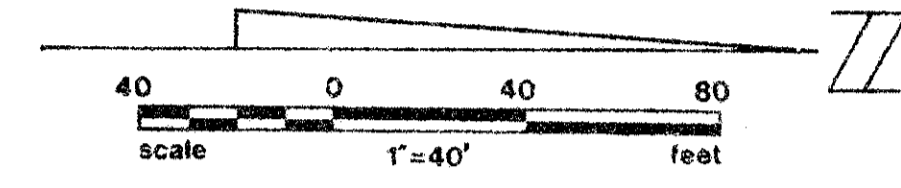
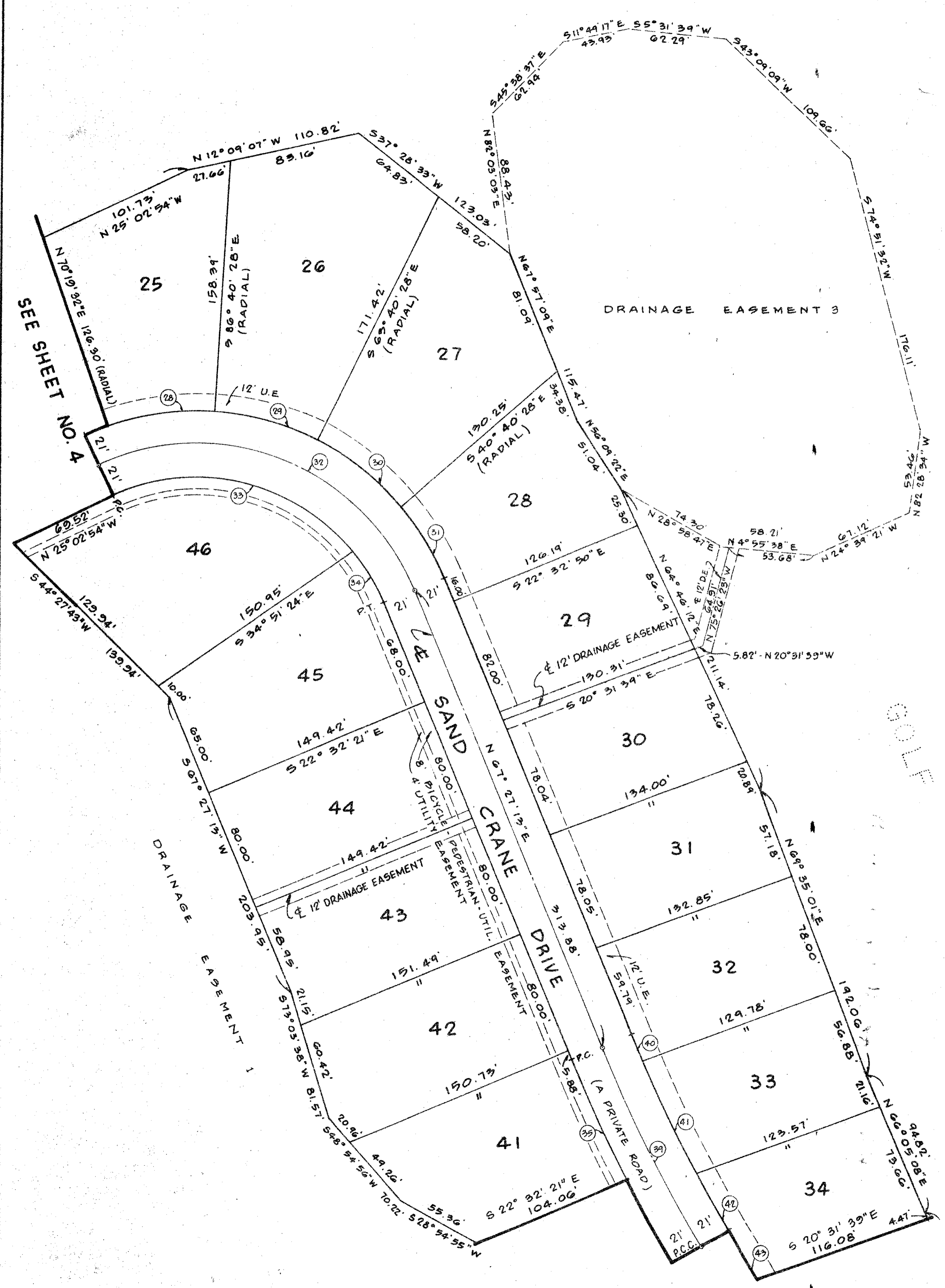
IN SECTION 27, TOWNSHIP 41 SOUTH, RANGE 42 EAST

PALM BEACH COUNTY, FLORIDA

IN 5 SHEETS SHEET NO. 5

MARCH 1978

STATE OF FLORIDA
 COUNTY OF PALM BEACH**
 This Plat was filed for record at
 this day of 1978,
 and duly recorded in Plat Book No.
 on page
 JOHN B. DUNKLE, Clerk Circuit Court
 By D.C.



CURVE DATA TABLE

RADIUS	Δ	ARC LENGTH	TANGENT
1. 979.00'	5°-12'-49"	89.08'	44.57'
2. 1000.00'	6°-34'-55"	114.88'	57.50'
3. 1021.00'	5°-40'-03"	100.99'	50.54'
4. 1021.00'	4°-29'-22"	80.00'	40.02'
5. 1000.00'	3°-34'-30"	62.40'	31.21'
6. 371.00'	37°-52'-13"	245.22'	127.28'
7. 350.00'	37°-52'-13"	231.34'	120.07'
8. 329.00'	2°-57'-26"	16.98'	8.49'
9. 329.00'	16°-22'-14"	94.00'	47.32'
10. 329.00'	18°-32'-33"	106.47'	53.71'
11. 171.00'	6°-16'-17"	18.72'	9.37'
12. 171.00'	26°-43'-00"	79.74'	40.61'
13. 171.00'	41°-38'-38"	124.29'	65.03'
14. 171.00'	28°-19'-19"	84.53'	43.15'
15. 150.00'	102°-57'-14"	269.53'	188.42'
16. 129.00'	82°-44'-39"	186.30'	113.62'
17. 129.00'	20°-12'-35"	45.50'	22.99'
18. 371.00'	6°-44'-21"	43.64'	21.84'
19. 371.00'	11°-35'-00"	75.00'	37.63'
20. 371.00'	10°-54'-07"	70.59'	35.40'
21. 371.00'	12°-21'-11"	79.99'	40.15'
22. 371.00'	6°-31'-49"	42.28'	21.16'
23. 350.00'	48°-06'-28"	293.87'	156.22'
24. 329.00'	3°-55'-01"	22.49'	11.25'
25. 329.00'	22°-12'-18"	127.50'	64.56'
26. 329.00'	21°-59'-09"	126.25'	63.91'
27. 171.00'	5°-22'-26"	16.04'	8.03'
28. 171.00'	23°-00'-00"	68.64'	34.79'
29. 171.00'	23°-00'-00"	68.64'	34.79'
30. 171.00'	23°-00'-00"	68.64'	34.79'
31. 171.00'	18°-07'-41"	54.10'	27.28'
32. 150.00'	92°-30'-07"	242.17'	156.70'
33. 129.00'	75°-10'-49"	169.27'	99.31'
34. 129.00'	17°-19'-18"	39.00'	19.65'
35. 1021.00'	4°-43'-32"	84.21'	42.13'
36. 1021.00'	3°-21'-19"	59.79'	29.90'
37. 779.00'	25°-02'-54"	340.56'	173.04'
38. 800.00'	32°-44'-31"	457.16'	235.01'
39. 1000.00'	8°-04'-51"	141.04'	70.64'
40. 979.00'	1°-04'-08"	18.26'	9.13'
41. 979.00'	4°-35'-12"	78.37'	39.21'
42. 979.00'	2°-25'-31"	41.44'	20.72'
43. 821.00'	2°-37'-03"	37.51'	18.76'
44. 821.00'	5°-27'-51"	78.30'	39.18'
45. 821.00'	5°-26'-45"	78.03'	39.05'
46. 821.00'	5°-28'-38"	78.48'	39.27'
47. 821.00'	5°-33'-39"	79.68'	39.87'
48. 821.00'	5°-42'-15"	81.74'	40.90'
49. 821.00'	0°-50'-52"	12.15'	6.07'

27

0238-318

27/41/42

34
77

SEE SHEET NO. 3

EASTPOINTE C.C. #4