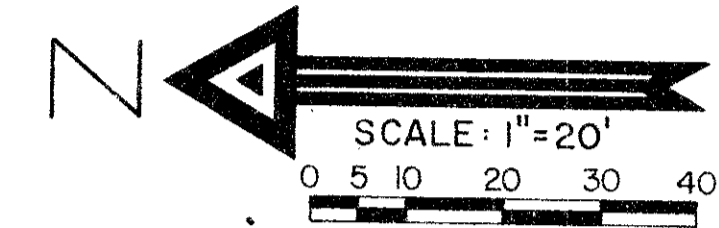
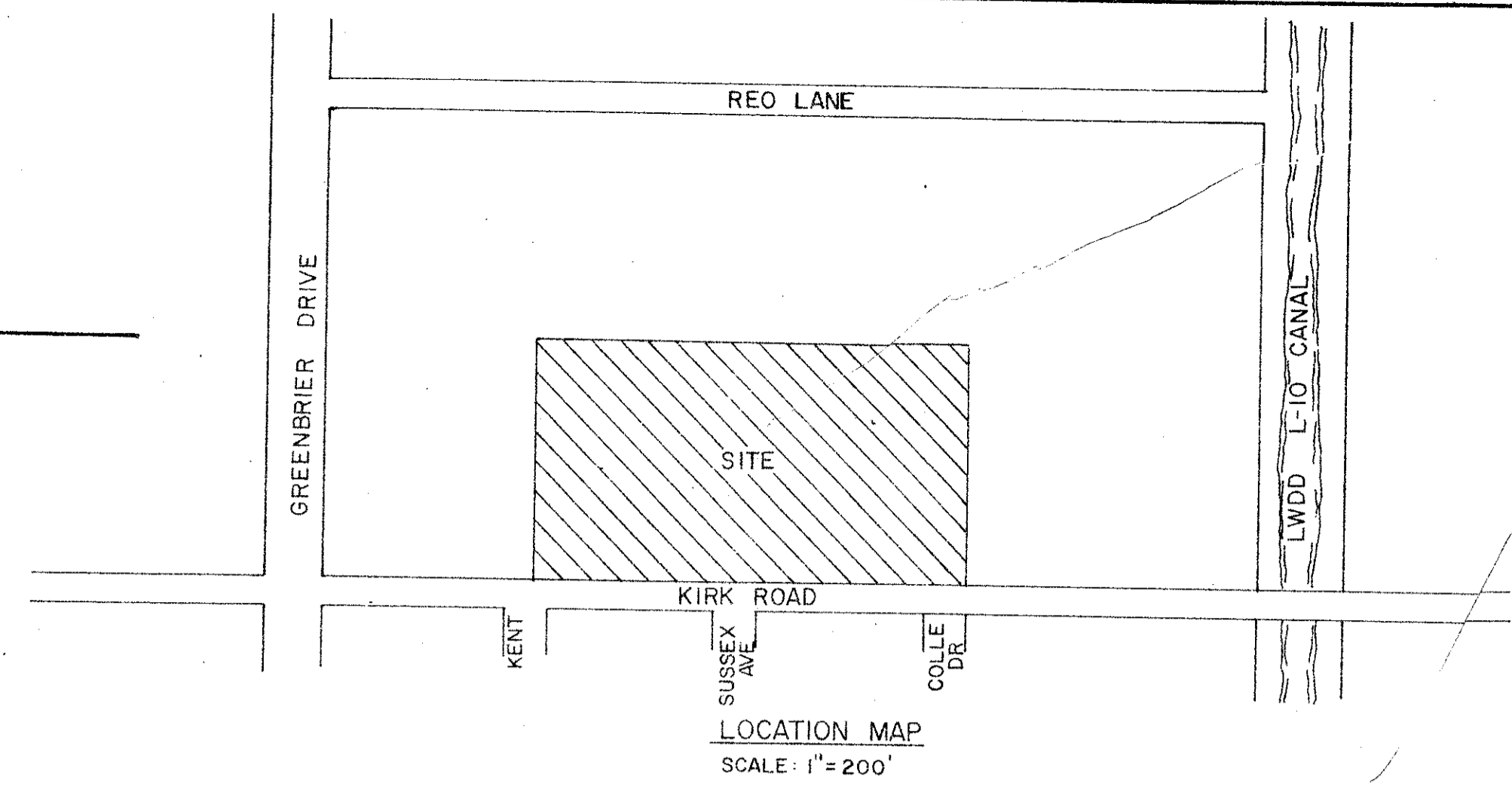


PLAT OF
KIRKWOOD TOWNHOMES

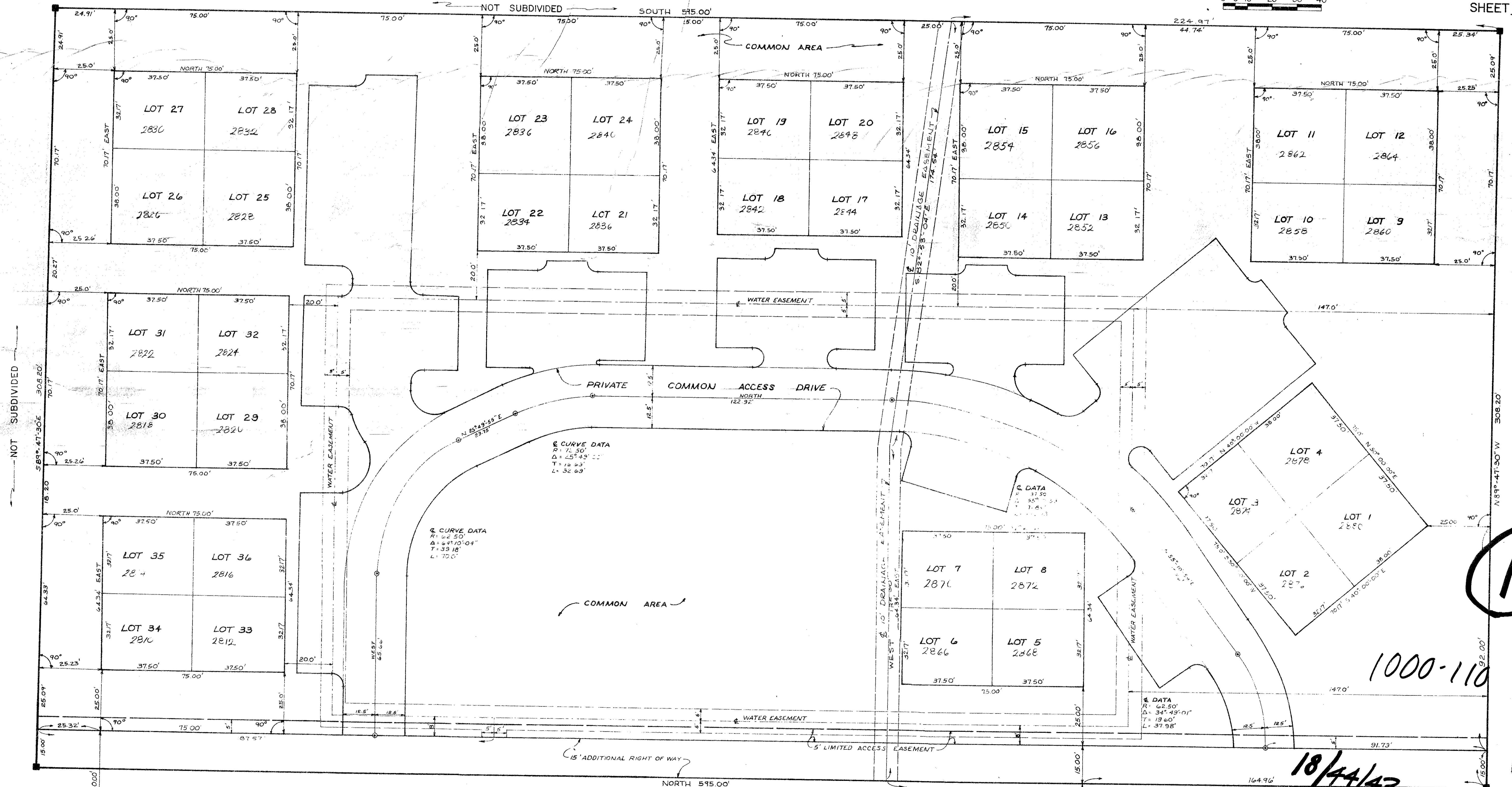
SW 1/4 OF THE SW 1/4 OF SECTION 18
TOWNSHIP 44 SOUTH RANGE 43 EAST
PALM BEACH COUNTY, FLORIDA

DWIGHT R. WEYANT & ASSOCIATES INC.
CONSULTING ENGINEERS-PLANNERS
FEBRUARY 1978

110



SHEET 1 OF 2



17

1000-110

18/44/43

KIRKWOOD TOWNHOMES

34
110

13 14 15 16 17 18 19 20 21 22 23 24