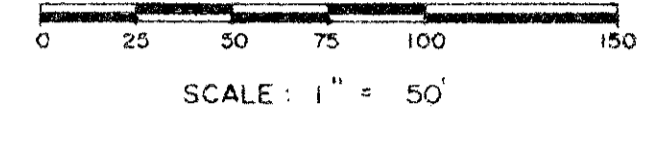


P.U.D.  
**BOCA ALTA**  
 A PLAT OF A PORTION OF SECTION 35, TWP. 47 S., RGE. 42 E.  
 AND ALSO BEING A REPLAT OF A PORTION OF TRACT 75-B, BOCA DEL MAR NO. 8, AS RECORDED  
 IN PLAT BOOK 30, PAGES 238-240 OF THE PUBLIC RECORDS OF PALM BEACH COUNTY, FLORIDA  
 PALM BEACH COUNTY, FLORIDA

JOHN A. GRANT, JR., INC. CONSULTING ENGINEERS & LAND SURVEYORS BOCA RATON, FLORIDA  
 JANUARY 1977  
 SHEET 2 OF 2

TABLE OF ARCS

NO.	DELTA	RADIUS	CHORD	ARC	TAN.	NO.	DELTA	RADIUS	CHORD	ARC	TAN.
1	64°44'36"	560.87	600.59	633.77	355.55	25	-6°18'36"	50.00	47.19	49.14	26.76
2	83°37'49"	25.00	33.34	36.49	22.36	26	22°09'11"	50.00	19.21	19.33	9.79
3	50°37'30"	560.87	479.61	495.57	265.27	27	22°31'16"	50.00	92.21	196.80	119.17
4	15°15'49"	560.87	149.97	149.42	75.15	28	54°04'13"	50.00	46.04	47.85	25.93
5	17°49'28"	560.87	173.78	174.49	87.95	29	58°15'05"	50.00	48.67	50.83	27.86
6	5°48'24"	560.87	37.26	37.26	18.64	30	48°30'36"	50.00	41.08	42.33	22.53
7	5°20'18"	560.87	52.24	52.26	26.15	31	63°54'01"	50.00	52.94	55.79	31.20
8	8°59'10"	560.87	87.88	87.96	44.07	32	9°15'51"	600.00	96.91	97.01	48.61
9	8°18'57"	560.87	81.33	81.40	40.77	33	4°18'56"	600.00	45.18	45.19	22.61
10	9°55'29"	560.87	77.51	77.58	38.85	34	4°56'55"	600.00	51.81	51.82	25.93
11	6°52'08"	560.87	67.20	67.24	33.66	35	9°15'51"	650.00	88.83	88.93	44.56
12	5°57'47"	560.87	58.35	58.37	29.21	36	2°28'36"	550.00	23.77	23.77	11.89
13	5°48'03"	560.87	56.76	56.78	28.42	37	6°47'15"	550.00	65.12	65.16	32.62
14	7°08'32"	560.87	69.87	69.92	35.00	38	9°15'51"	575.00	92.87	92.97	46.59
15	8°24'12"	560.87	82.19	82.26	41.20	39	9°15'51"	575.00	92.87	92.97	46.59
16	9°15'51"	600.00	96.91	97.01	48.61	40	66°43'12"	520.87	572.85	606.54	342.93
17	3°49'22"	600.00	40.02	40.03	20.02	41	23°09'26"	520.87	209.09	210.52	106.72
18	5°26'29"	600.00	56.96	56.98	28.51	42	43°33'46"	520.87	386.55	396.02	208.14
19	9°15'51"	550.00	88.83	88.93	44.56	43	56°59'41"	520.87	497.03	518.13	282.78
20	1°56'12"	550.00	18.59	18.59	9.30	44	65°10'31"	50.00	53.86	56.88	31.96
21	7°19'39"	550.00	70.29	70.34	35.22	45	94°07'51"	50.00	73.21	82.14	53.74
22	36°52'12"	25.00	15.81	16.09	8.33	46	25°14'14"	25.00	10.92	11.01	5.60
23	274°38'21"	50.00	67.79	239.67	46.11	47	32°31'55"	25.00	14.00	14.19	7.29
24	36°52'12"	50.00	31.62	32.18	16.67	48	5°37'07"	560.87	54.98	55.00	27.52
						49	8°06'42"	560.87	79.34	79.40	39.77

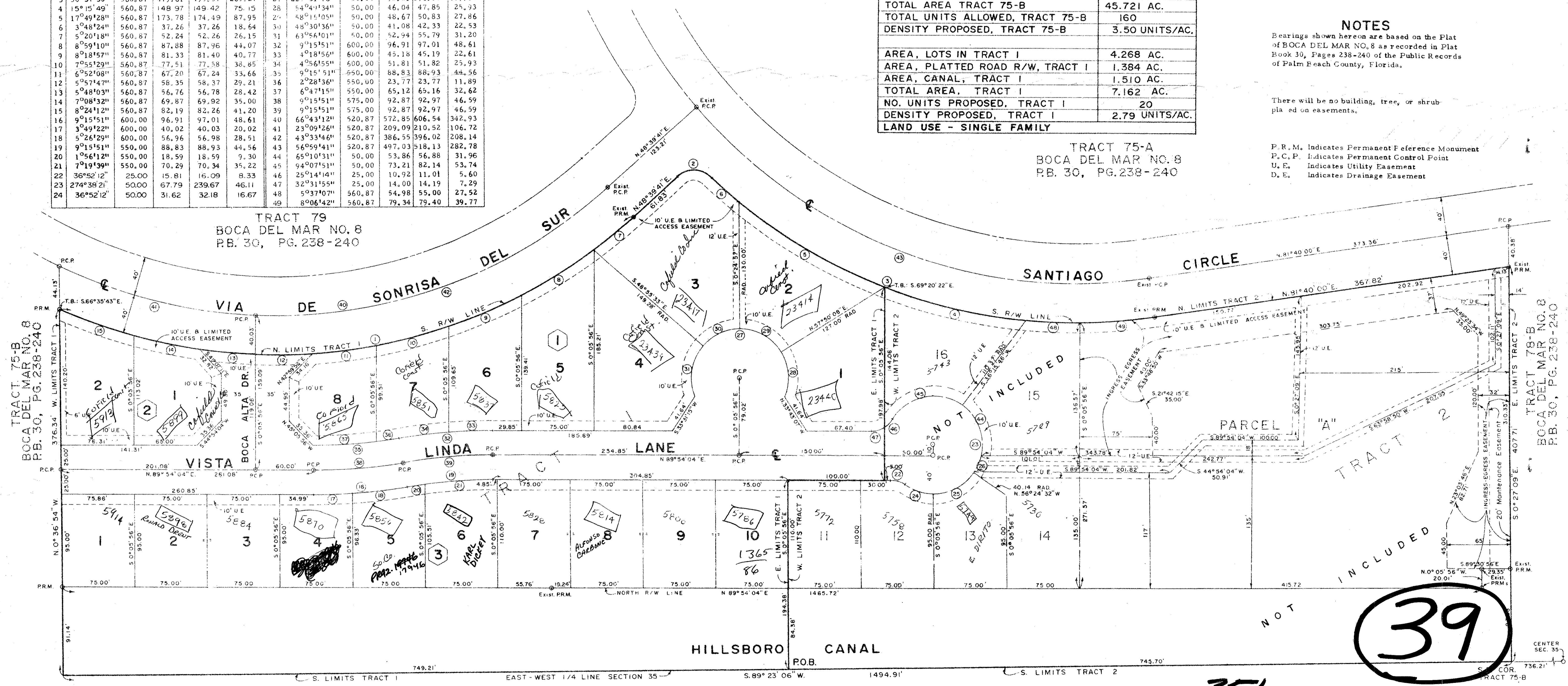


TOTAL AREA TRACT 75-B	45.721 AC.
TOTAL UNITS ALLOWED, TRACT 75-B	160
DENSITY PROPOSED, TRACT 75-B	3.50 UNITS/AC.
AREA, LOTS IN TRACT I	4.268 AC.
AREA, PLATTED ROAD R/W, TRACT I	1.384 AC.
AREA, CANAL, TRACT I	1.510 AC.
TOTAL AREA, TRACT I	7.162 AC.
NO. UNITS PROPOSED, TRACT I	20
DENSITY PROPOSED, TRACT I	2.79 UNITS/AC.
LAND USE - SINGLE FAMILY	

**NOTES**  
 Bearings shown hereon are based on the Plat of BOCA DEL MAR NO. 8 as recorded in Plat Book 30, Pages 238-240 of the Public Records of Palm Beach County, Florida.

There will be no building, tree, or shrub planted on easements.

P. R. M. Indicates Permanent Reference Monument  
 P. C. P. Indicates Permanent Control Point  
 U. E. Indicates Utility Easement  
 D. E. Indicates Drainage Easement



39

35/47/42  
 Turnout

0205-3584

This instrument was prepared by:  
 John A. Grant, Jr., John A. Grant, Jr., Inc.  
 3333 North Federal Highway, Boca Raton, Fla.

ACREAGE  
 BROWARD COUNTY  
**BOCA ALTA - P.U.D.**