

PLAT NO. 5

(A PLANNED UNIT DEVELOPMENT)

EASTPOINTE COUNTRY CLUB

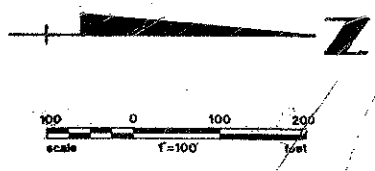
IN SECTION 27, TOWNSHIP 41 SOUTH, RANGE 42 EAST

BEING A REPLAT OF A PORTION OF EASTPOINTE COUNTRY CLUB NO. 1,

PLAT BOOK 32, PAGES 7-9 AND OTHER LANDS

PALM BEACH COUNTY, FLORIDA

IN 3 SHEETS SHEET NO. 3



130

STATE OF FLORIDA
 COUNTY OF PALM BEACH
 This Plat was filed for record on
 this _____ day of _____, 1978,
 and duly recorded in Plat Book No. _____
 on page _____
 JOHN B. DUNKLE, Clerk Circuit Court
 By _____ D.C.

THERE SHALL BE NO BUILDINGS OR STRUCTURES PLACED ON ANY EASEMENTS.

THERE SHALL NOT BE ANY FILING OF CONSTRUCTION OR THE PLANTING OF TREES OR SHRUBS ON EASEMENTS.

BEARING REFERENCE: PLAT BOOK 34, PAGES 16, 17 AND 18.

IMPROVEMENTS WITHIN THIS PLAT ARE SUBJECT TO THE DECLARATION OF RESTRICTIVE COVENANTS AS FILED IN O.R.B. 2543, PAGE 1230, OFFICIAL RECORDS OF PALM BEACH COUNTY.

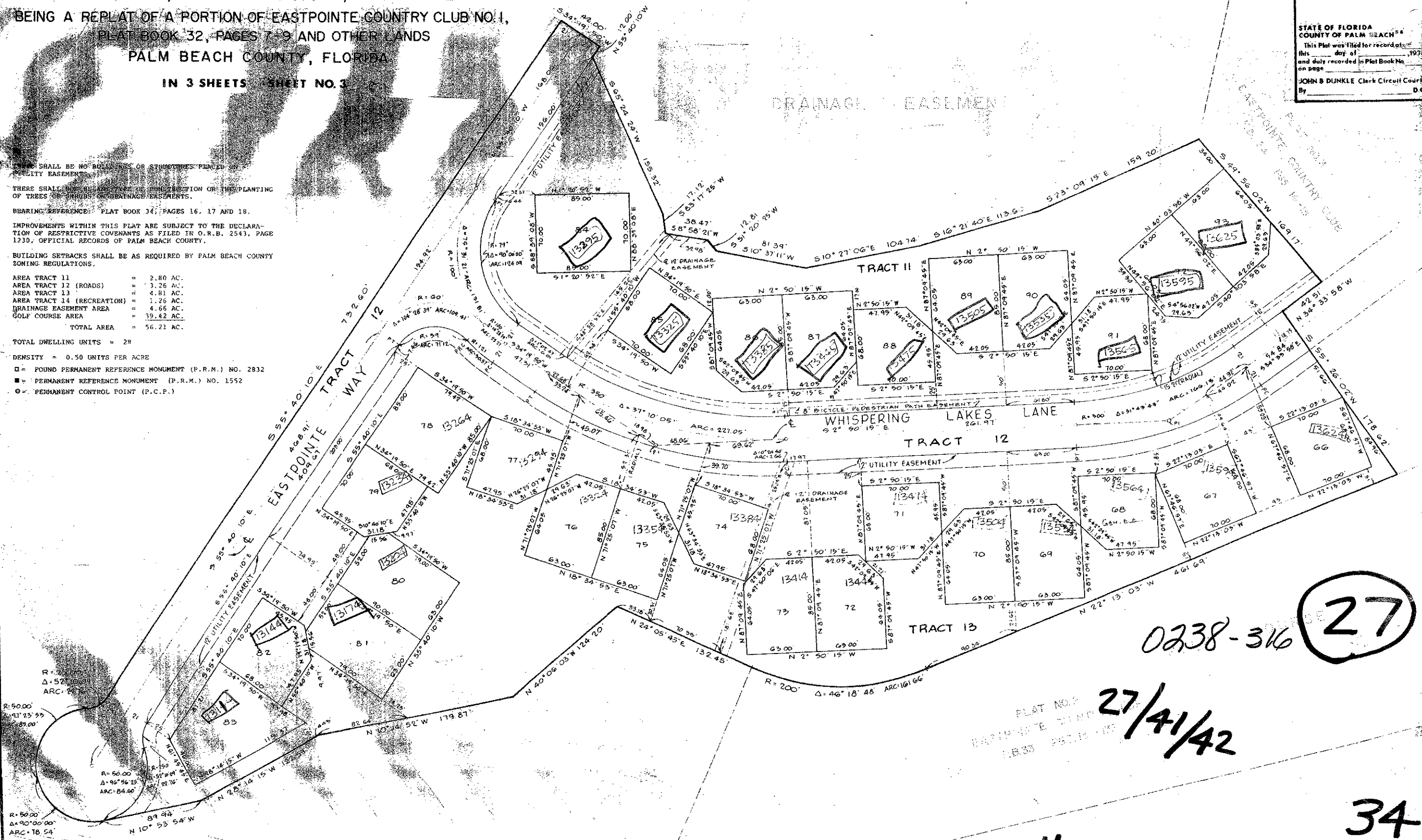
BUILDING SETBACKS SHALL BE AS REQUIRED BY PALM BEACH COUNTY ZONING REGULATIONS.

AREA TRACT 11	=	2.80 AC.
AREA TRACT 12 (ROADS)	=	3.26 AC.
AREA TRACT 13	=	4.81 AC.
AREA TRACT 14 (RECREATION)	=	1.25 AC.
DRAINAGE EASEMENT AREA	=	4.66 AC.
GOLF COURSE AREA	=	39.42 AC.
TOTAL AREA	=	56.21 AC.

TOTAL DWELLING UNITS = 28

DENSITY = 0.50 UNITS PER ACRE

- = FOUND PERMANENT REFERENCE MONUMENT (P.R.M.) NO. 2832
- = PERMANENT REFERENCE MONUMENT (P.R.M.) NO. 1552
- = PERMANENT CONTROL POINT (P.C.P.)



0238-316 (27)

PLAT NO. 5
EASTPOINTE COUNTRY CLUB
27/41/42

EASTPOINTE C.C. #5

34
130