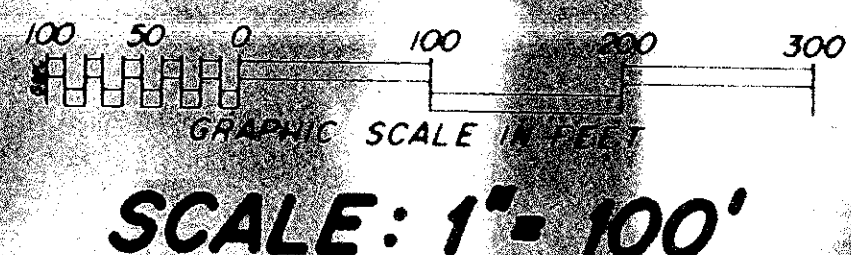


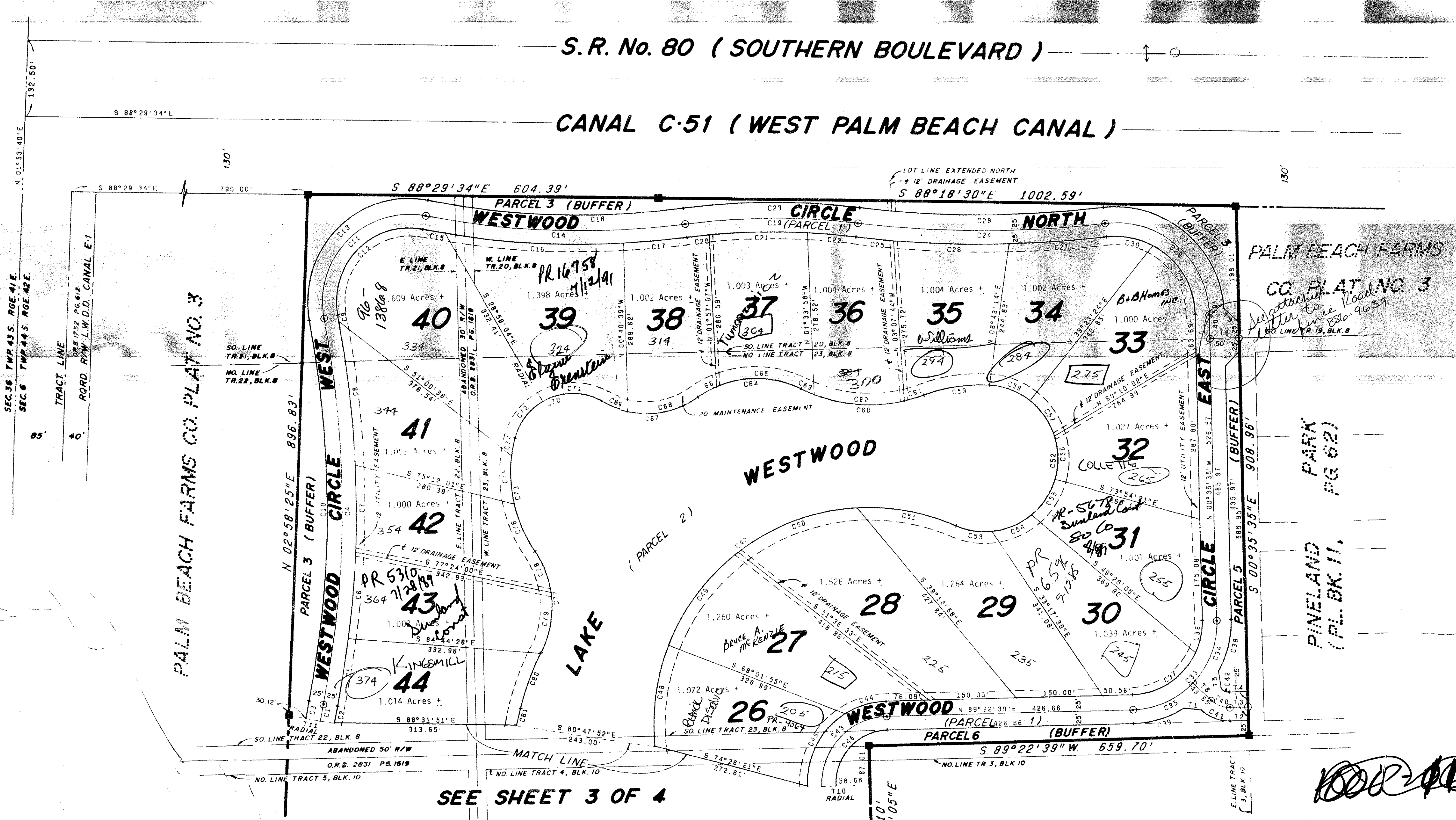
SEE BACK

WESTWOODS

A PLANNED UNIT DEVELOPMENT
 A REPLAT OF TRACTS 4,7,8,9,17,18 AND PART OF TRACT 5, BLOCK 10, TRACT 23 AND
 PART OF TRACTS 20,21 AND 22, BLOCK 8, PALM BEACH FARMS COMPANY PLAT NO. 3
 PLAT BOOK 2, PAGE 46, PUBLIC RECORDS OF PALM BEACH COUNTY, FLORIDA.
 SHEET 2 OF 4 SHEETS



APRIL 1978



NO.	CH. BRNG.	CHORD	RADIUS	DELTA	ARC	TANGENT
1	N 11°16'26"E	29.89'	2161.37'	00°47'32"	29.89'	14.94'
2	N 11°16'26"E	29.54'	2136.37'	00°47'32"	29.54'	14.77'
3	N 11°16'26"E	30.23'	2186.37'	00°47'32"	30.23'	15.12'
4	N 09°46'04"E	666.00'	1769.81'	03°48'18"	666.00'	338.92'
5	N 09°46'04"E	120.48'	1814.81'	03°48'18"	120.50'	60.27'
6	N 09°46'04"E	149.96'	1814.81'	04°44'08"	150.00'	75.04'
7	N 00°45'44"E	149.96'	1814.81'	04°44'08"	150.00'	75.04'
8	N 05°32'25"W	249.06'	1814.81'	07°52'10"	249.26'	124.83'
9	N 09°37'30"W	9.50'	1814.81'	00°18'00"	9.50'	4.75'
10	N 00°37'30"W	656.70'	1764.81'	21°26'42"	656.55'	334.18'
11	N 46°03'21"E	248.22'	150.00'	111°39'42"	249.97'	124.98'
12	N 46°03'21"E	206.85'	125.00'	111°39'42"	243.51'	184.15'
13	N 46°03'21"E	289.58'	175.00'	111°39'42"	341.05'	257.80'
14	N 87°20'28"E	448.88'	1399.68'	18°27'16"	450.83'	227.38'
15	N 78°55'03"E	40.00'	1424.68'	01°36'31"	40.00'	20.00'
16	N 85°55'19"E	307.80'	1424.68'	12°23'41"	308.20'	154.70'
17	N 85°55'19"E	110.85'	1424.68'	04°27'04"	110.88'	55.37'
18	N 89°23'13"E	440.86'	1374.68'	06°22'39"	440.77'	220.32'
19	N 89°23'13"E	300.00'	1200.00'	14°21'44"	300.73'	150.39'
20	N 84°23'30"E	39.35'	1175.00'	01°55'08"	39.35'	19.68'
21	N 89°29'58"E	170.00'	1175.00'	08°17'49"	170.15'	85.22'
22	N 84°16'45"E	85.00'	1175.00'	04°08'45"	85.02'	42.53'
23	N 89°23'13"E	306.25'	1225.00'	14°21'41"	307.05'	154.34'
24	N 89°23'13"E	428.00'	1779.81'	13°48'42"	429.04'	215.56'
25	N 83°15'08"E	200.00'	1804.81'	02°05'21"	200.00'	100.15'
26	N 87°20'28"E	200.00'	1804.81'	06°22'09"	200.00'	100.15'
27	N 86°39'56"E	169.00'	1804.81'	05°22'01"	169.06'	84.59'
28	N 89°06'43"E	421.99'	1754.81'	13°48'42"	423.01'	212.54'
29	N 48°18'20"E	239.34'	161.76'	95°25'29"	269.42'	177.85'
30	N 78°51'30"E	80.70'	136.76'	34°19'08"	81.92'	42.23'
31	N 31°38'48"E	139.04'	136.76'	06°25'29"	140.77'	72.32'
32	N 48°18'20"E	276.33'	186.76'	61°06'21"	145.86'	80.73'
33	N 44°23'32"E	212.19'	150.08'	89°58'14"	205.34'	102.67'
34	N 21°53'59"E	114.83'	150.08'	44°59'07"	117.83'	62.14'
35	N 66°53'06"E	114.83'	150.08'	44°59'07"	117.83'	62.14'
36	N 12°20'34"E	56.00'	125.08'	25°52'19"	56.48'	28.73'
37	N 57°14'41"E	132.74'	125.08'	64°05'55"	139.93'	78.31'
38	N 74°26'07"E	73.07'	141.70'	29°53'04"	73.91'	37.81'
39	N 74°07'15"E	92.14'	175.08'	30°30'48"	93.24'	47.75'
40	N 69°06'02"E	34.04'	44.49'	89°58'14"	34.93'	18.42'
41	N 69°06'02"E	53.17'	69.49'	44°59'07"	54.56'	28.77'
42	N 69°06'02"E	14.91'	19.49'	44°59'07"	15.30'	8.07'
43	N 44°06'32"E	165.81'	116.70'	90°32'14"	184.40'	117.80'
44	N 74°26'07"E	73.07'	141.70'	29°53'04"	73.91'	37.81'
45	N 29°10'00"E	143.09'	141.70'	60°30'48"	144.90'	75.56'
46	N 44°06'32"E	130.29'	91.70'	80°32'14"	144.90'	75.56'
47	N 54°52'55"E	645.89'	374.00'	119°25'15"	779.52'	640.29'
48	N 08°51'33"E	177.00'	374.00'	27°01'00"	178.69'	91.09'
49	N 38°03'20"E	200.00'	374.00'	11°01'00"	202.46'	103.78'
50	N 70°40'06"E	220.00'	374.00'	34°12'33"	222.68'	115.09'
51	N 78°49'02"E	173.47'	125.00'	26°49'09"	175.50'	89.17'
52	N 14°33'50"E	248.15'	125.00'	20°03'25"	499.99'	249.99'
53	N 80°10'29"E	84.22'	125.00'	29°33'01"	84.95'	38.85'
54	N 68°00'23"E	73.80'	125.00'	34°00'11"	74.95'	38.85'
55	N 33°54'06"E	73.90'	126.00'	4°06'17"	74.00'	38.85'
56	N 00°12'11"W	3.90'	126.00'	4°06'17"	3.90'	1.95'
57	N 34°18'27"E	73.90'	126.00'	4°06'17"	75.00'	38.85'
58	N 68°46'44"E	73.90'	126.00'	4°06'17"	75.00'	38.85'
59	N 68°31'02"E	27.90'	27.90'	15°75'00"	27.90'	13.95'
60	N 86°17'07"E	214.44'	27.90'	06°25'53"	220.42'	16.87'
61	N 74°11'16"E	35.00'	27.90'	07°22'40"	35.02'	17.54'
62	N 85°14'20"E	58.00'	27.90'	23°46'07"	160.31'	82.56'
63	N 85°42'44"E	95.06'	176.00'	17°05'25"	25.09'	12.55'
64	N 88°46'43"E	79.46'	176.00'	19°00'18"	188.33'	104.30'
65	N 87°34'29"E	102.19'	176.00'	19°00'18"	188.33'	104.30'
66	N 81°46'25"E	35.69'	176.00'	12°17'35"	37.58'	18.95'
67	N 88°22'56"E	166.81'	156.00'	65°30'36"	178.95'	100.56'
68	N 79°02'49"E	124.00'	156.00'	46°50'09"	177.52'	67.57'
69	N 68°11'59"E	50.66'	156.00'	18°40'26"	50.84'	25.85'
70	N 68°29'54"E	182.75'	156.00'	103°50'00"	188.43'	134.98'
71	N 68°55'25"E	102.19'	156.00'	103°50'00"	188.43'	134.98'
72	N 38°09'15"E	78.26'	102.00'	45°42'23"	107.03'	59.03'
73	N 09°05'38"W	198.19'	240.00'	48°46'23"	204.30'	108.80'
74	N 1°44'59"E	29.66'	240.00'	07°05'08"	29.68'	14.86'
75	N 01°42'27"W	82.65'	240.00'	19°49'44"	83.06'	41.95'
76	N 22°33'04"W	91.01'	240.00'	21°51'30"	91.58'	48.34'
77	N 03°12'05"W	174.30'	172.00'	80°53'19"	182.79'	101.09'
78	N 1°03'29"W	74.00'	172.00'	24°50'41"	74.58'	37.89'
79	N 09°23'11"E	106.43'	172.00'	38°02'38"	108.20'	55.66'
80	N 21°01'11"E	102.98'	462.74'	12°46'39"	103.20'	51.81'
81	N 14°06'19"E	30.00'	1635.00'	31°03'05"	30.00'	15.00'

SURVEYOR'S NOTES

- DENOTES PERMANENT REFERENCE MONUMENTS (PRM'S)
- DENOTES PERMANENT CONTROL POINTS (PCP'S)
- BEARINGS ARE REFERENCED TO AN ASSUMED BEARING OF N.01°57'46"E, ALONG THE EAST LINE OF SECTION 1, TOWNSHIP 44 SOUTH, RANGE 41 EAST
- BUILDING SETBACK LINES SHALL BE AS REQUIRED BY PALM BEACH COUNTY ZONING REGULATIONS
- THERE SHALL BE NO BUILDINGS OR ANY KIND OF CONSTRUCTION OR TREES OR SHRUBS PLACED ON DRAINAGE EASEMENTS
- ALL LOTS CONTAIN A MINIMUM OF 1.00 ACRE
- LOT LINES ARE NOT RADIAL UNLESS SHOWN OTHERWISE
- FOR LOT ALLEGES REFER TO INDIVIDUAL LOTS ON SHEETS 2, 3 AND 4.

(TANGENT TABLE - "T" NO. S)

NO.	BEARING	DIST.
1	S 83°22'19"E	30.82'
2	N 89°24'25"E	31.80'
3	N 89°24'25"E	31.80'
4	N 89°24'25"E	31.80'
5	N 07°50'37"W	30.82'
6	S 45°36'28"E	43.85'
7	N 44°24'25"E	35.36'
8	N 89°24'25"E	50.00'
9	S 48°53'40"E	34.85'
10	N 88°50'25"E	108.86'
11	S 79°07'20"E	80.12'

WESTWOODS

0337-000 34
 6/44 132

THIS INSTRUMENT WAS PREPARED BY
 PAUL J. FOTORNY OF DAILEY-FOTORNY, INC.,
 1028 SOUTH MILITARY TRAIL, WEST PALM BEACH,
 FLORIDA.

Dailey-Fotorny, inc.
 land surveyors, planners, engineers