

P.U.D. - BOCA WEST
VILLAGE OF WOODBRIDGE
 A PLAT OF A PORTION OF SECTIONS
 15 & 16, TOWNSHIP 47 SOUTH, RANGE 42 EAST
 PALM BEACH COUNTY, FLORIDA
 JOHN A. GRANT, JR., INC. CONSULTING ENGINEERS AND LAND SURVEYORS
 BOCA RATON, FLORIDA

150

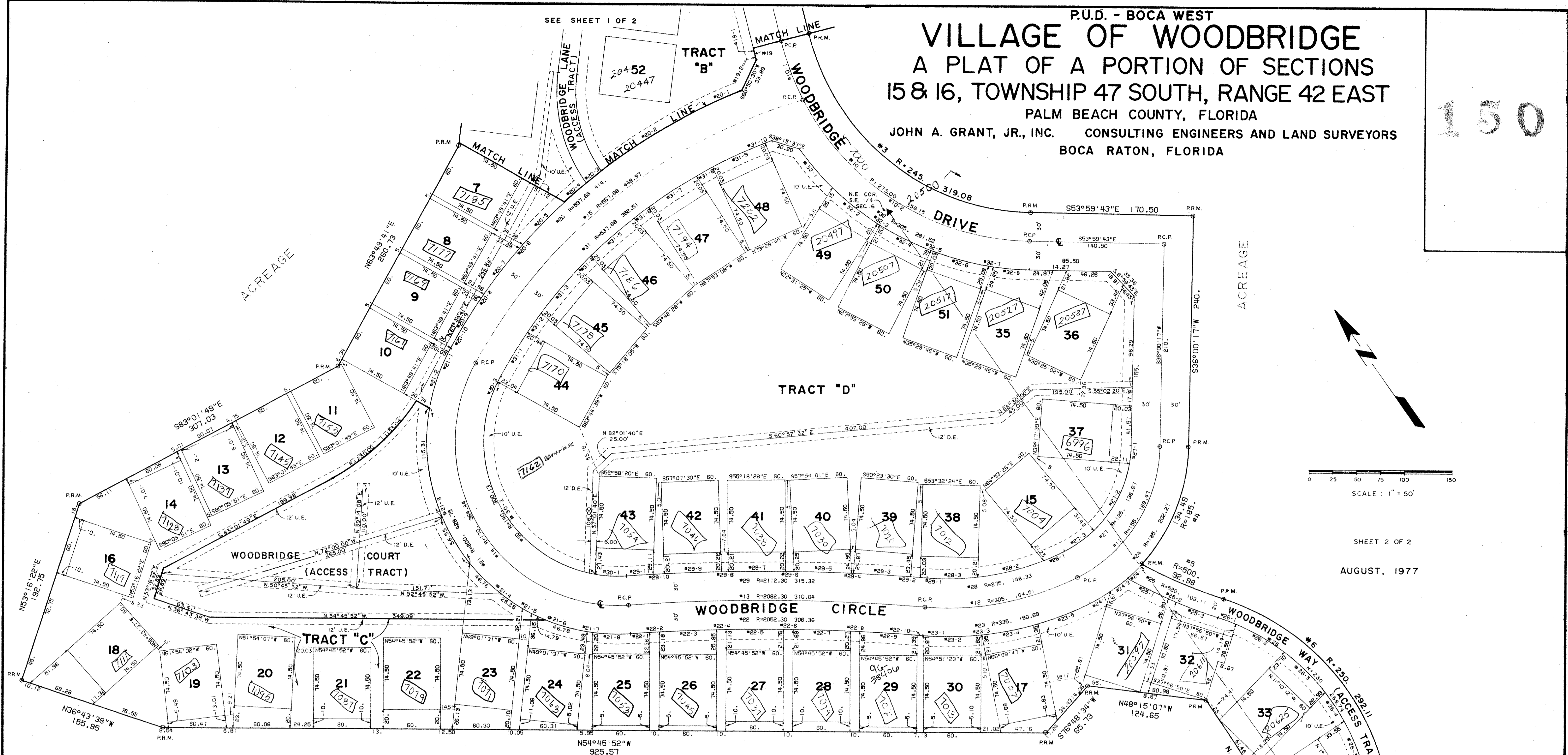


TABLE OF ARCS

NUMBER	RADIUS	ARC	DELTA	TAN.	CHORD	CHORD BRNG.	NUMBER	RADIUS	ARC	DELTA	TAN.	CHORD	CHORD BRNG.
1	361.86	84.37	13.227122	42.68	84.77	S07°43'07.0"E	21	2052.30	305.36	0.00°33'10"	153.46	306.07	S54°43'26.0"E
2	305.00	187.21	0.35°10'07"	96.66	184.29	S03°02'23.5"W	22	60.00	10.02	0.00°16'47"	5.01	10.02	S58°17'48.5"E
3	245.00	319.08	0.74°37'10"	186.71	297.00	S16°41'08.0"E	23	60.00	30.05	0.00°30'36"	30.03	60.06	S71°19'07.0"E
4	185.00	334.49	0.41°39'10"	70.37	331.55	S56°49'52.0"W	24	60.00	10.01	0.00°16'46"	5.00	10.01	S66°20'26.0"E
5	500.00	92.38	0.10°39'15"	46.62	92.84	S22°14'54.5"E	25	60.00	60.01	0.00°00'31"	30.01	60.01	S65°21'47.5"E
6	250.00	296.11	0.65°56'49"	165.21	275.38	S08°56'49.5"E	26	10.00	10.00	0.00°16'45"	5.00	10.00	S54°23'09.5"E
7	310.00	53.68	0.05°55'16"	26.91	53.61	S31°05'50.0"E	27	60.00	60.02	0.00°16'45"	30.01	60.02	S52°24'31.0"E
8	363.22	136.63	0.21°30'48"	67.10	131.85	S25°18'04.0"E	28	10.00	10.01	0.00°16'46"	5.00	10.01	S52°25'52.0"E
9	275.00	168.80	0.35°10'07"	87.15	166.16	S03°02'23.5"W	29	60.00	60.10	0.00°16'40"	30.05	60.09	S51°27'09.0"E
10	275.00	296.15	0.74°37'10"	165.21	275.38	S16°41'08.0"E	30	5.95	5.95	0.00°00'00"	2.97	5.95	S90°31'50.0"E
10-1	65.15	01°34'28"	32.73	65.00	01°34'28"	S13°01'13.0"W	31	537.68	27.48	0.00°44'44"	13.74	27.48	N02°42'30.5"E
10-2	293.00	06°10'42"	162.13	279.33	06°10'42"	S23°28'22.0"E	32	140.00	300.13	122°45'42"	256.93	245.87	N02°24'50.0"E
11	165.00	169.47	0.62°36'36"	84.32	161.15	S67°19'35.0"W	33	1.03	0.00°10'37"	0.52	1.03	S80°32'09.5"E	
12	305.00	121.25	0.03°54'11"	60.63	121.25	S03°54'11.0"E	34	60.09	60.09	01°04'16'37"	30.12	60.01	S55°45'46.5"E
13	2042.30	310.83	0.08°33'10"	155.71	310.83	S03°02'23.5"W	35	60.10	60.10	00°14'04"	30.05	60.09	S51°27'09.0"E
14	170.00	364.44	0.28°49'42"	181.99	364.44	N02°24'50.0"E	36	60.00	60.00	00°16'32"	30.12	60.00	S66°09'47.5"E
15	567.68	448.97	0.45°18'52"	226.97	437.36	N86°29'07.0"E	37	58.76	58.76	01°03'04"	29.46	58.69	S76°19'35.0"E
16	340.00	39.65	0.06°34'20"	19.87	39.65	S32°42'48.0"E	38	185.00	202.27	0.62°36'36"	112.58	192.34	N67°19'35.0"E
17	363.22	121.25	0.03°54'11"	60.63	121.25	S03°54'11.0"E	39	24.86	24.86	00°17'11"55"	12.45	24.84	S89°12'04.5"E
18	245.00	150.38	0.35°10'07"	77.64	149.03	S03°02'23.5"W	40	21.94	21.94	0.06°47'41"	10.98	21.93	S80°54'22.0"E
18-1	28.05	0.06°33'36"	14.04	28.03	01°15'52.5"E	24-3	20.98	20.98	0.06°29'50"	10.50	20.97	N80°54'22.0"E	
18-2	20.03	0.04°41'05"	10.02	20.03	0.06°38'26.5"E	24-4	134.49	134.49	04°39'10"	70.37	131.95	N56°49'52.0"E	
19	102.30	0.22°59'27"	51.91	101.56	0.06°39'43.5"W	25	520.00	103.11	01°12'14"11"	51.73	102.94	S31°59'41.5"E	
19-1	7.05	0.01°19'26"	3.52	7.05	0.18°57'44.5"W	26-2	61.88	61.88	0.00°00'00"	30.94	61.87	S89°51'08.0"E	
19-2	6.02	0.01°07'57"	3.01	6.03	0.18°44'03.5"W	26-3	46.65	46.65	0.00°08'26"	23.34	46.64	S35°00'19.0"E	
20	597.68	448.97	0.45°18'52"	226.97	437.36	N86°29'07.0"E	26	280.00	288.74	0.62°36'36"	152.08	283.11	S04°06'07.5"E
20-1	44.33	0.04°14'58"	22.17	44.32	N78°36'33.0"W	26-1	58.51	58.51	01°34'24"	29.41	58.34	S56°16'32.0"E	
20-2	125.72	01°03'08"	63.05	125.49	N65°45'36.0"E	26-2	60.17	60.17	01°59'26"	30.26	60.00	S10°29'37.0"E	
20-3	20.02	0.01°07'57"	10.01	20.02	S86°15'15.5"W	26-3	36.13	36.13	0.09°00'00"	18.10	36.09	S01°30'06.0"W	
20-4	30.25	0.03°54'11"	15.13	30.25	S89°50'47.0"E	26-4	61.61	61.61	01°09'20"48"	30.98	61.42	S13°40'30.0"E	
20-5	65.25	0.05°56'27"	31.13	65.23	S79°24'55.0"E	26-5	32.20	32.20	0.08°01'23"	16.13	32.18	S22°21'35.5"W	
20-6	5.11	0.00°29'26"	2.56	5.12	S76°10'43.0"E	26-6	136.67	136.67	0.62°36'36"	70.07	129.96	S67°19'35.0"E	
20-7	60.81	0.01°07'57"	30.43	60.81	S73°01'07.5"E	27	125.00	18.52	0.06°29'14"	9.28	18.50	S40°14'54.0"W	
20-8	5.03	0.01°20'08"	2.52	5.03	S69°11'47.5"E	27-1	91.14	91.14	0.07°11'32"	46.06	79.72	S53°05'17.0"W	
20-9	52.10	0.05°45'40"	26.05	52.08	S64°41'29.0"E	27-2	37.01	37.01	01°57'50"	18.64	36.87	N89°50'02.0"E	
20-10	0.34	0.00°01'57"	0.17	0.34	S63°50'39.5"E	27-3	275.00	148.33	0.30°54'16"	76.02	146.54	N55°43'59.0"E	
21	200.00	426.75	0.22°49'42"	213.04	351.24	S02°24'50.0"W	28	24.26	24.26	0.00°03'19"	12.14	24.26	N78°49'27.5"E
21-1	4.66	0.01°20'08"	2.33	4.66	S63°09'37.0"E	28-1	71.33	71.33	01°44'13"	35.86	71.12	N88°51'59.5"E	
21-2	51.19	0.01°20'08"	25.59	51.19	S63°09'37.0"E	28-2	5.31	5.31	0.00°33'10"	2.65	5.31	N54°43'26.0"E	
21-3	71.86	0.01°20'08"	35.93	71.86	S63°09'37.0"E	28-3	10.31	10.31	0.00°12'02"	5.15	10.31	S50°32'52.0"W	
21-4	13.04	0.00°59'48"	6.52	13.04	S63°09'37.0"E	28-4	5.71	5.71	0.00°16'46"	2.85	5.71	N50°47'16.0"E	
21-5	10.60	0.00°59'48"	5.30	10.60	S63°09'37.0"E	28-5	50.01	50.01	00°13'37.0"	25.00	50.01	N51°44'29.0"E	
21-6	61.19	0.01°20'08"	30.59	61.19	S63°09'37.0"E	28-6	35.00	35.00	0.00°02'50"	17.50	35.00	N52°34'44.0"E	

NOTES

Bearings shown herein are based on a bearing of S. 0° 47' 38" E., along the East line of Section 16, Township 47 South, Range 42 East, Palm Beach County, Florida, as shown on BOCA WEST REPLAT OF HAMLET "S" PLAT NO. 1, as recorded in Plat Book 29, Pages 243-244 of the Public Records of Palm Beach County, Florida.

There shall be no building, tree, or shrub placed on easements.
 P.R.M. Indicates Permanent Monument
 P.C.P. Indicates Permanent Control Point
 U.E. Indicates Utility Easement
 D.E. Indicates Drainage Easement

This instrument was prepared by:
 John A. Grant, Jr., John A. Grant, Jr., Inc.
 33 North Highway, Boca Raton, Florida.

53+38

0214-321

15+16/47/42

34

150