

HOLIDAY CITY AT BOCA RATON SECTION 6

A PLAT OF A PORTION OF SECTION 26, TOWNSHIP 47 SOUTH, RANGE 41 EAST AND A REPLAT OF A PORTION OF BLK. 12, FLORIDA FRUIT LAND CO. SUBDIVISION NO. 2 AS RECORDED IN PLAT BOOK NO. 1, PAGE 102, PUBLIC RECORD OF PALM BEACH COUNTY, FLORIDA

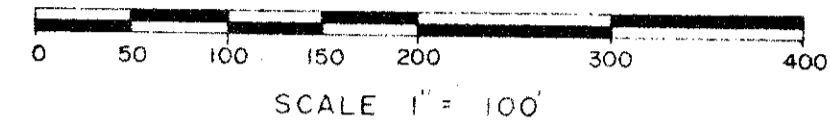
154

PALM BEACH COUNTY, FLORIDA

JOHN A. GRANT, JR., INC.

CONSULTING ENGINEERS AND LAND SURVEYORS

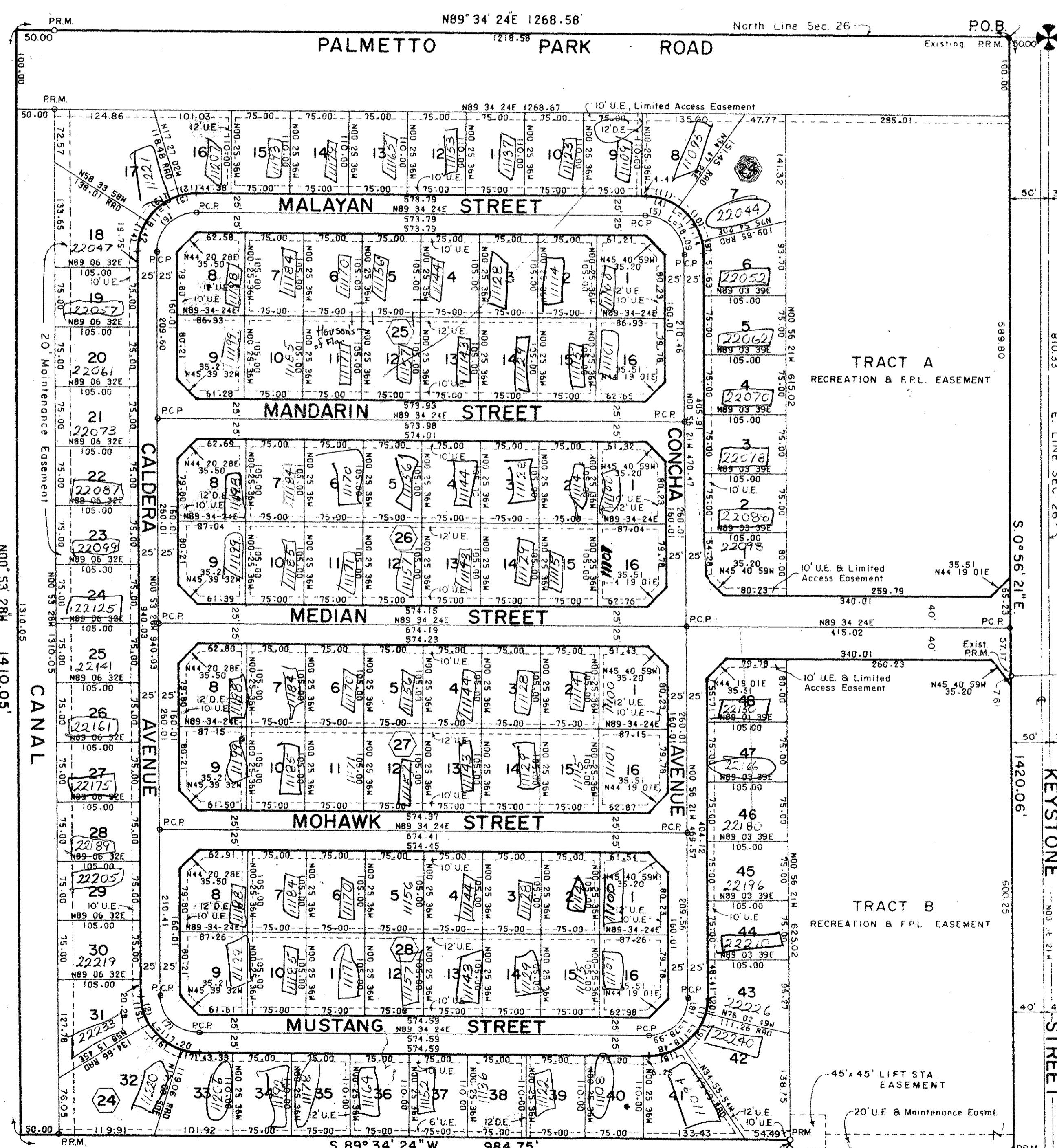
BOCA RATON, FLORIDA



FLORIDA FRUIT LANDS SUB. NO. 2
P.B. 1, PG. 102

FEBRUARY 1978
SHEET 2 OF 2

CURVE TABLE						
NO.	LEN.	RAD.	DELTA	TAN	L. CH.	C. M. ORG.
1	118.48	75.00	90 30 46	75.67	108.54	N44 19 01E
2	117.20	75.00	89 32 08	74.39	105.64	N45 39 32W
3	118.42	75.00	90 27 52	75.61	106.49	N44 20 28E
4	117.14	75.00	89 29 14	74.33	105.59	N45 40 59W
5	78.09	50.00	89 29 14	49.55	70.39	N45 40 59W
6	78.95	50.00	90 27 52	50.41	71.00	N44 20 28E
7	78.13	50.00	89 32 08	49.60	70.42	N45 39 32W
8	78.99	50.00	90 30 46	50.45	71.03	N44 19 01E
9	17.22	75.00	13 09 17	8.65	17.18	N07 31 01W
10	53.82	75.00	41 06 56	28.13	52.67	N34 39 07W
11	45.13	75.00	35 13 01	23.80	45.39	N72 49 05W
12	22.28	75.00	17 01 26	11.22	22.20	N81 03 40E
13	53.82	75.00	41 06 56	28.13	52.67	N51 59 30E
14	42.32	75.00	32 19 30	21.74	41.75	N15 16 17E
15	40.38	75.00	30 50 47	20.69	39.89	N16 18 51W
16	53.82	75.00	41 06 56	28.13	52.67	N52 17 43W
17	23.00	75.00	17 34 25	11.59	22.91	N81 38 23W
18	45.17	75.00	34 30 18	23.28	44.49	N72 15 15E
19	53.82	75.00	41 06 55	28.13	52.67	N34 30 39E
20	19.49	75.00	14 53 33	9.80	15.44	N06 30 24E



HOLIDAY CITY AT BOCA RATON SEC. 3
P.B. 30, PG. 189-190

HOLIDAY CITY AT BOCA RATON SEC. 3
P.B. 33, PG. 168-169

ORIOLE COUNTRY
P.B. 32, PG. 175-190

69

0478-302 34
21/47/41
154

This instrument was prepared by:
John A. Grant, Jr., John A. Grant, Jr., Inc.
3333 North Federal Hwy., Boca Raton, FL

NOTES

P. R. M. Indicates Permanent Reference Monuments.
P. C. P. Indicates Permanent Control Points.
U. E. 6 foot wide Easement back and sides of lot line, 10 foot front.
D. E. 12 foot wide Easement for Drainage, 12 foot on rear line, 6 foot each side on lot lines.

Bearings shown hereon are based on N. 0° 56' 21" W. along the West line of Section 25, Township 47 South, Range 41 East, as recorded by Holiday City at Boca Raton Sec. 3, in Plat Book 30, Page 190 of the Public Records of Palm Beach County, Florida.

There will be no Buildings, Trees nor Shrubs placed on Easements.

HOLIDAY CITY #6