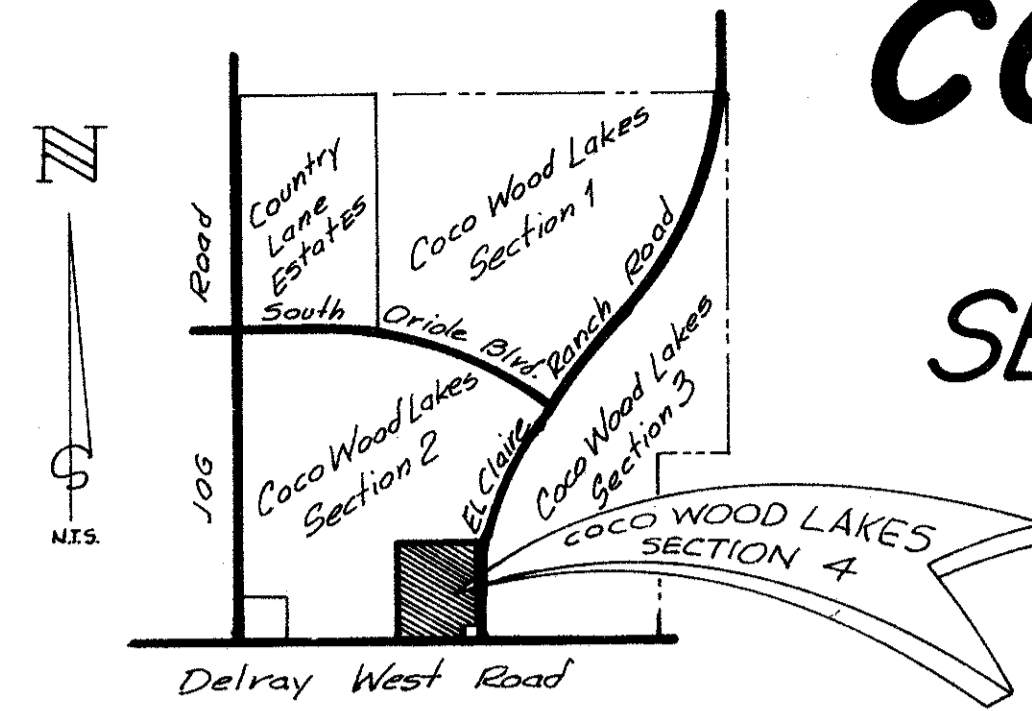


COCO WOOD LAKES - SECTION 4

A Subdivision of a portion of
SECTION 15, TOWNSHIP 46 SOUTH, RANGE 42 EAST
PALM BEACH COUNTY, FLORIDA

159



PREPARED UNDER THE DIRECTION OF
K.M. KIRK R.L.S.
BROOME AND FARINA, INC.
CONSULTING ENGINEERS
CORAL SPRINGS, FLORIDA

DESCRIPTION

A parcel of land lying in the East one-half (E. 1/2) of Section 15, Township 46 South, Range 42 East, more fully described as follows:
Commencing at the S.W. corner of the S.E. 1/4 of said Section 15, thence North 00° 53' 00" East 78.00 feet, thence S. 89° 42' 29" E. 1028.47' along the North Right-of-Way line of Delray West Road (State Road No. 806) to the True Point of Beginning; thence North 00° 17' 31" East a distance of 500.00 feet to a point; thence South 89° 42' 29" East a distance of 440.29 feet to a point; thence South 00° 13' 19" West a distance of 450.00 feet to a point; thence North 89° 46' 41" West a distance of 49.94 feet to a point; thence South 00° 17' 31" West a distance of 49.94 feet to a point; thence North 89° 42' 29" West along the North Right-of-Way line of Delray West Road (State Road No. 806), a distance of 390.90 feet to the True Point of Beginning.
Said land situated, lying and being in Palm Beach County, Florida and containing 5.000 Acres more or less.

SURVEY NOTES

- Found \blacksquare - Set \square Indicates Permanent Reference Monument
- Found \bullet - Set \circ - Set Indicates Permanent Control Point.
- Basis of Bearing shown hereon is the southerly line of the S.E. 1/4 of Section 15, Township 46 S., Range 42 E., i.e. assumed N. 89° 42' 29" W.
- Building Set Back Lines shall be as required by Palm Beach County Zoning Regulations.
- There shall be no buildings, trees or shrubs placed on Drainage Easements, other than that construction required to maintain, protect and operate Drainage Facilities.
- There shall be no buildings or other structures placed on Utility Easements, other than those which are required to maintain, protect and operate Utility Facilities.
- R/W intersection are the long chord of a 25 foot radius.
- Where Utility and Drainage Easements intersect, the Drainage Easement shall take precedence. The areas within the said intersections are Utility and Drainage Easements. Construction and maintenance of utilities shall not interfere with the Drainage Facilities or their operation within these areas of intersection.
- U.E. - Denotes Utility Easements.
- D.E. - Denotes Drainage Easements.
- L.A.E. Denotes Limited Access Easements, shown thus |||||

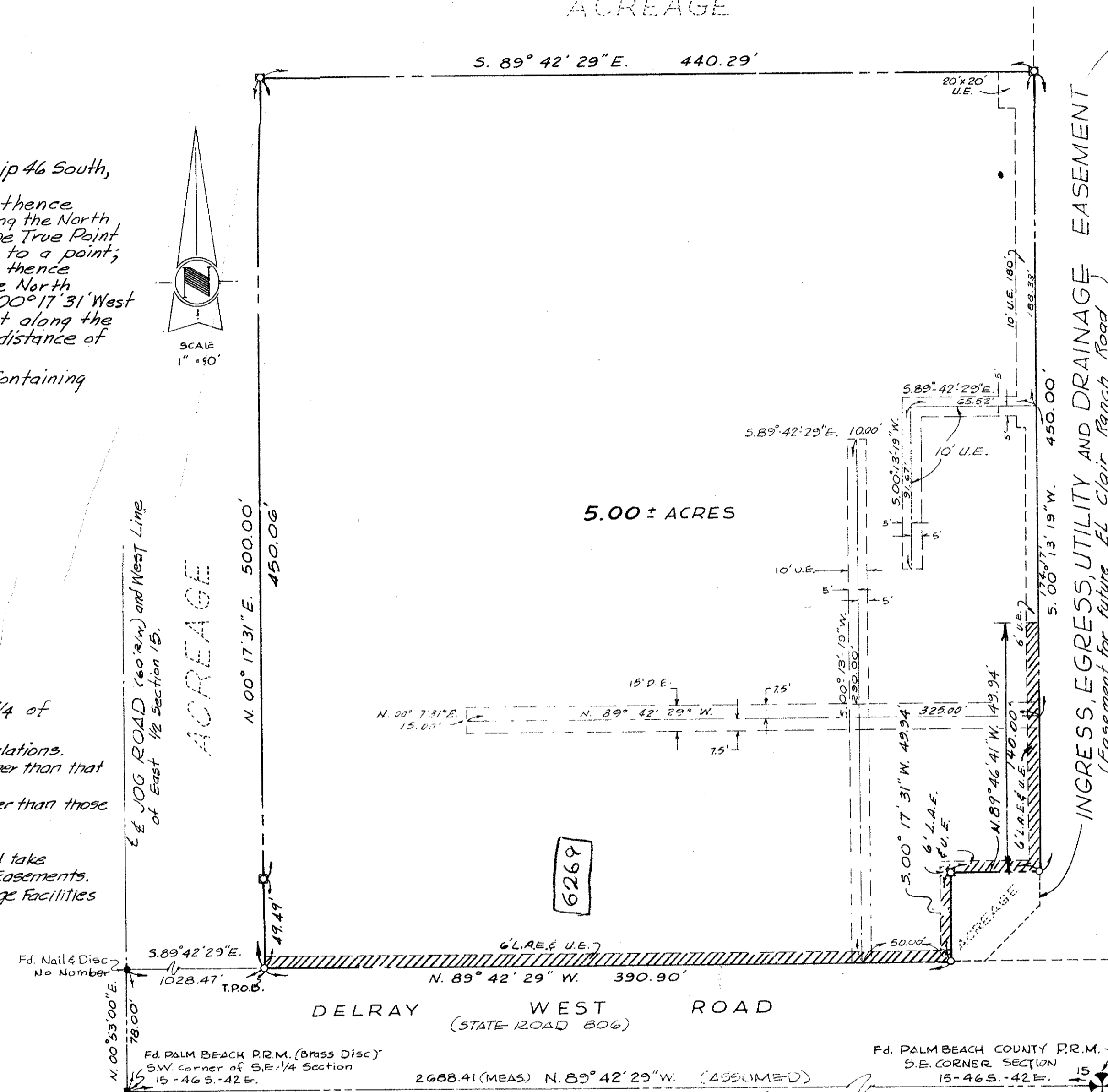
SURVEYOR'S CERTIFICATE

This is to Certify that the plat shown hereon is a true and correct representation of a Survey made under our responsible direction and supervision and that said survey is accurate to the best of our knowledge and belief; that (P.R.M.'s) Permanent Reference Monuments have been set at the locations shown hereon and that (P.C.P.'s) Permanent Control Points will be set under our responsible direction and supervision in compliance with state law and further that the survey data compiles with all the requirements of Chapter 177, Florida Statutes as amended and ordinances of Palm Beach County, Florida.

BROOME & FARINA, INC.

Dated: March 15, 1978

K.M. Kirk
Registered Land Surveyor
No. 2824 State of Florida



APPROVALS

BOARD OF COUNTY COMMISSIONERS PALM BEACH COUNTY, FLORIDA

This Plat is hereby approved for record this 9th day of MAY A.D. 1978.

COUNTY ENGINEER

This Plat is hereby approved for record this 9th day of MAY A.D. 1978.

ATTEST: John B. Dinkler
BOARD OF COUNTY COMMISSIONERS

By Deputy B. E. Vatt (Chairperson)

By Herbert Kahlert (P.E.)

OWNER'S DEDICATION

KNOW ALL MEN BY THESE PRESENTS: that ORIOLE HOMES CORP., a Florida Corporation Owners of the said land shown hereon, known as Coco Wood Lakes - Section 4, a subdivision of a portion of Section 15, Township 46 South, Range 42 East, Palm Beach County, Florida, being also further described as indicated hereon, have caused the same to be surveyed and platted and do hereby dedicate as follows;

- RECREATION AREA
The property hereby platted is hereby dedicated to the Coco Wood Lakes Association, Inc., subject to the 'Recreation Area Obligations' as set forth in the Declaration of Protective Covenants, Restrictions and Easements for each of the Sections of COCO WOOD LAKES to be recorded amongst the Public Records of Palm Beach County, Florida.
- EASEMENTS
a. Utility and Drainage Easements as shown hereon, are hereby dedicated in perpetuity for the construction, and maintenance of Utility and Drainage facilities.
b. Limited Access Easements, are hereby dedicated to the Board of County Commissioners of Palm Beach County.

IN WITNESS WHEREOF: The said Corporation has caused these presents to be signed by its President and attested by its Ass't Secretary and its corporate seal to be affixed hereto by and with the authority of its Board of Directors, this 14th day of MARCH A.D. 1978.

ATTEST A. Nunez Assistant Secretary R. D. Levy President

AREA TABULATIONS

LOT AREA	5.00 ± ACRES
GROSS AREA	5.00 ± ACRES
NUMBER OF LOTS	1 (Recreational Area)

ACKNOWLEDGEMENT

STATE OF FLORIDA
COUNTY OF BROWARD
Before me and personally appeared R. D. Levy and A. Nunez to me well known, and known to me to be the individuals described in and who executed the foregoing instrument as R. D. Levy President and A. Nunez Asst. Secretary of the above named ORIOLE HOMES CORP., a Corporation, and severally acknowledged to and before me that the executed such instrument as such President and Assistant Secretary respectively of said corporation, and that the seal affixed to the foregoing instrument is the corporate seal of said corporation, and that it was affixed to said instrument by due and regular corporate authority, and that said instrument is the free act and deed of said corporation.
Witness my hand and official seal, this 14th day of March A.D. 1978.

February 9, 1981
My Commission Expires

Nancy E. Lantz
Notary Public

TITLE CERTIFICATION

STATE OF FLORIDA
COUNTY OF PALM BEACH
We, State Title and Abstract Company, Inc., a title insurance company, duly licensed in the State of Florida, do hereby certify that we have examined the title to the hereon described property, that we find the title to the property is vested to ORIOLE HOMES CORP.; that the current taxes have been paid; and that we find the property is free of encumbrances; and that we find all mortgages are shown and are true and correct.

Dated MARCH 15, 1978
John M. Ash Vice-President

COCO WOOD LAKES #4