

TALLPINE - PHASE TWO - OF WELLINGTON - P.U.D.

IN PART OF SECTION 3, TWP. 44 S., RGE. 41E.

PALM BEACH COUNTY, FLORIDA
IN 2 SHEETS SHEET NO. 2

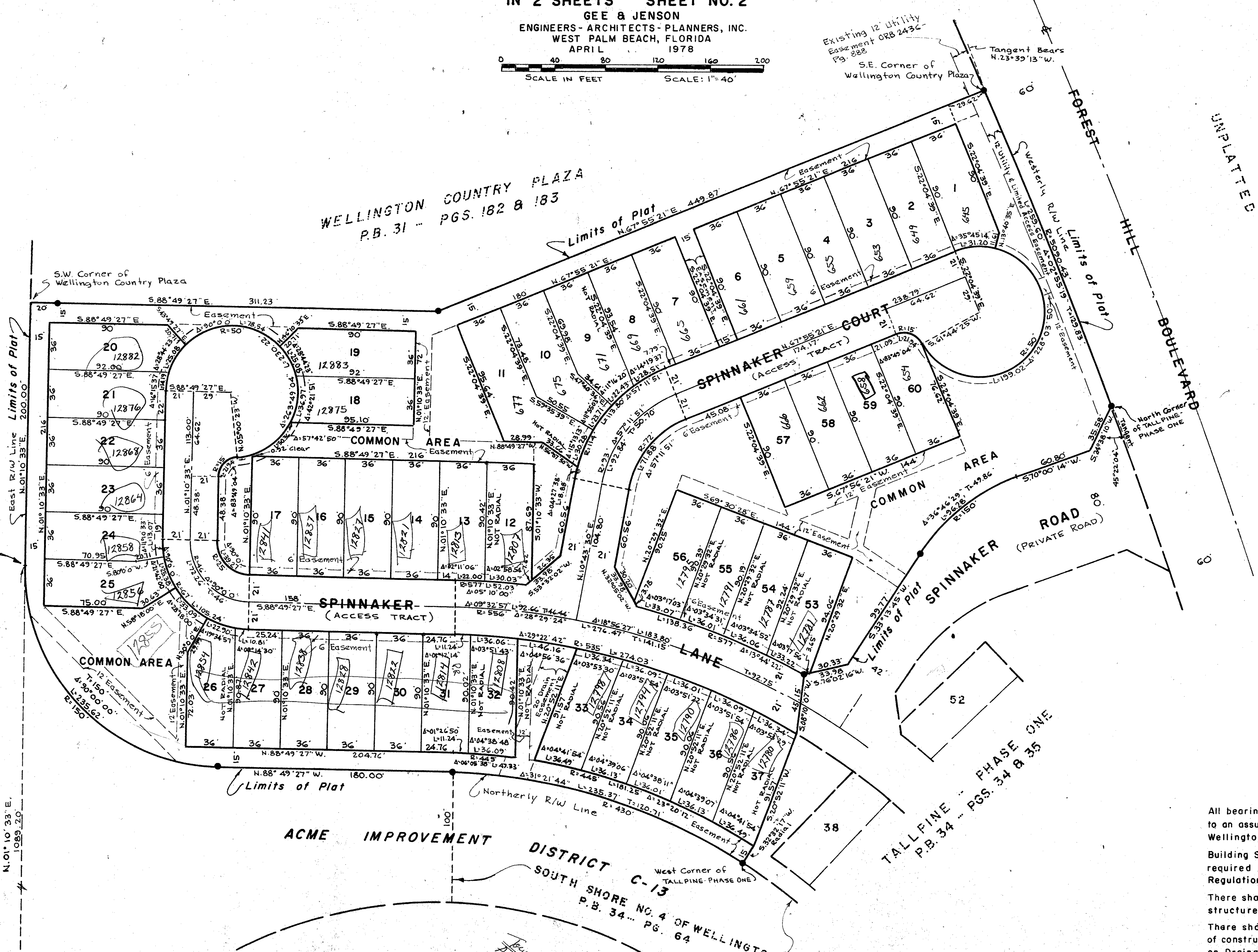
GEE & JENSON
ENGINEERS - ARCHITECTS - PLANNERS, INC.
WEST PALM BEACH, FLORIDA
APRIL 1978

SCALE IN FEET SCALE: 1"=40'

187

STATE OF FLORIDA
COUNTY OF PALM BEACH
This Plat was filed for record at _____ M.
this _____ day of _____, 1978,
and duly recorded in Plat Book No. _____
on page _____
JOHN B. DUNKLE, Clerk Circuit Court
By _____, D.C.

UNPLATTED
ACME IMPROVEMENT DISTRICT C-7
P.O.B.



NOTES

All bearings shown hereon are relative to an assumed meridian used throughout Wellington.

Building Setback Lines shall be as required by Palm Beach County Zoning Regulations.

There shall be no buildings or other structures placed on Utility Easements.

There shall be no buildings or any kind of construction or trees or shrubs placed on Drainage Easements.

Easements are for Public Utilities, unless otherwise noted.

● denotes Permanent Reference Monument.

TALLPINE #2

3/44/41

0332-366 34-187

4 3
605.01
5.89° 39' 42" E
9 10

Job No 78-59A