

CAMELOT VILLAGE SECTION TWO VILLAGES OF ORIOLE (A PUD)

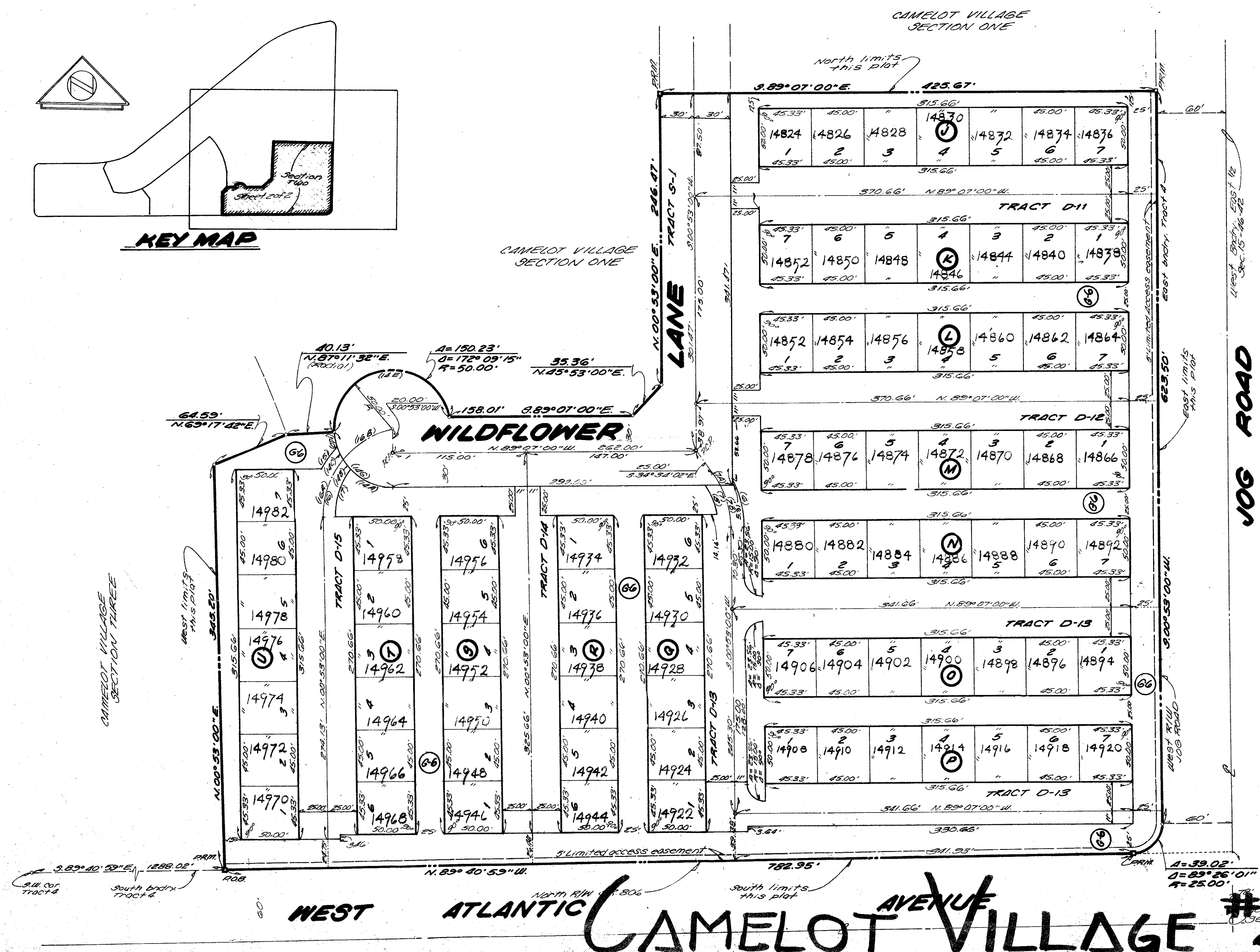
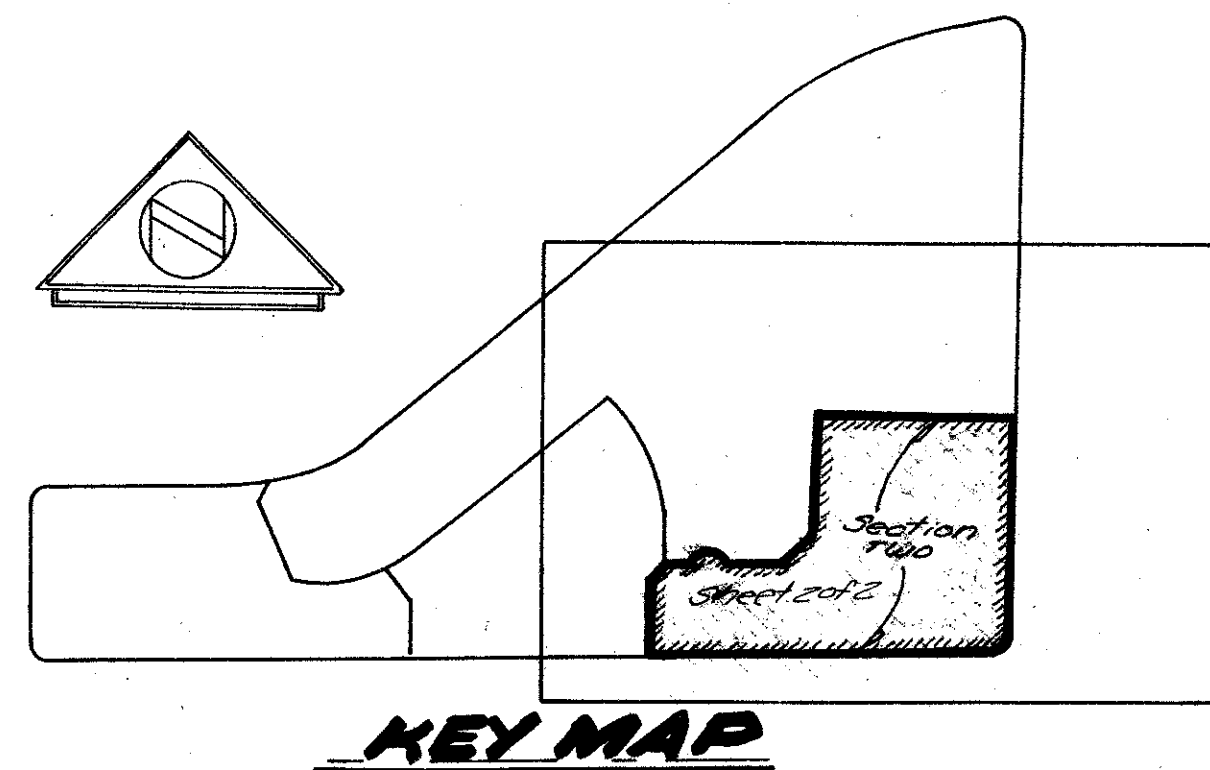
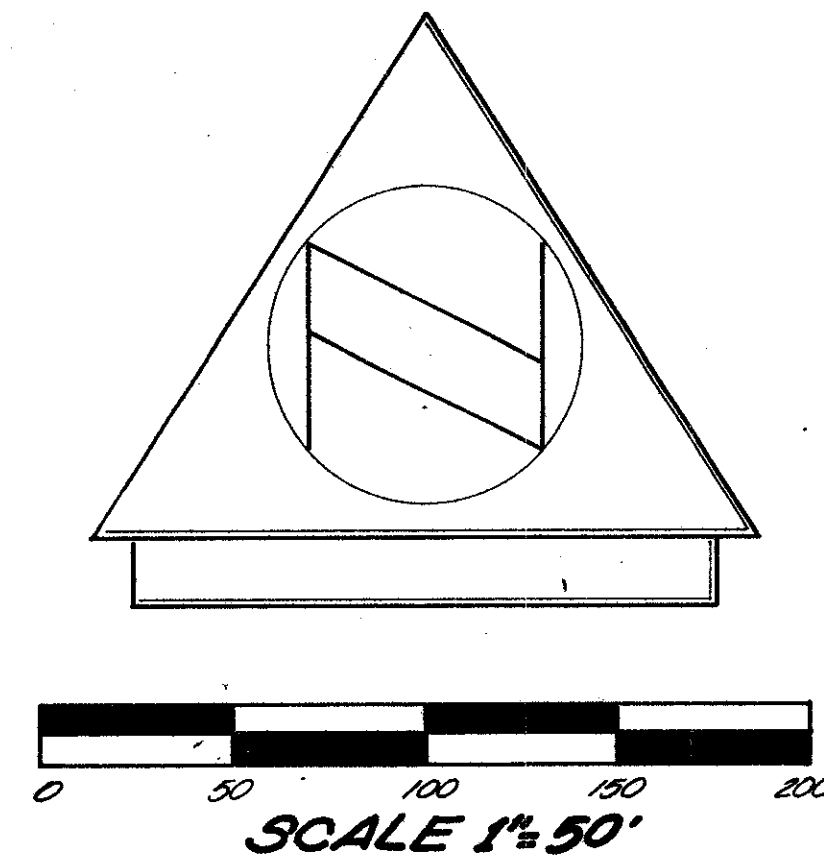
BEING A RESUBDIVISION OF A PORTION OF
TRACT 4

PLAT NO. 1 VILLAGES OF ORIOLE P.B. 30 PG. 38, 39 AND 40
Section 15, Township 46 South, Range 42 East
Palm Beach County, Florida

This instrument prepared by: KEITH and SCHNARS
LAND SURVEYING SCIENCES, P.A.
Fort Lauderdale, Florida

BY: THOMAS F. ECHLARS, P.L.C. #2872

200



0303-314

CURVE TABULATION				
CURVE NUMBER	RADIUS	DELTA	ARC	TANGENT
6	89.22'	172° 23' 17"	48.65'	21.72'
7	78.22'	35° 27' 02"	48.40'	25.00'
7A	78.22'	08° 16' 06"	11.23'	5.65'
7B	78.22'	27° 10' 56"	37.11'	18.91'
8	67.22'	22° 55' 33"	26.90'	13.63'
14A	50.00'	45° 21' 01"	39.58'	20.89'
14B	50.00'	12° 52' 23"	11.34'	5.69'
14C	50.00'	15° 50' 43"	12.08'	6.07'
14D	50.00'	14° 07' 15"	12.32'	6.19'
14E	50.00'	172° 02' 15"	150.23'	729.13'
14G	50.00'	86° 18' 32"	75.32'	46.85'
15	87.88'	14° 35' 16"	22.37'	11.25'
16	76.88'	77° 19' 11"	103.74'	61.30'
16A	76.88'	3° 21' 20"	52.82'	27.80'
16B	76.88'	37° 57' 21"	50.98'	26.44'
17	65.88'	37° 14' 12"	42.81'	22.19'

15/46/42 34/200

CAMELOT VILLAGE #2