

TABULAR INFORMATION

The following information must be completed on this form and printed on all copies of the Master Land Use Plan.

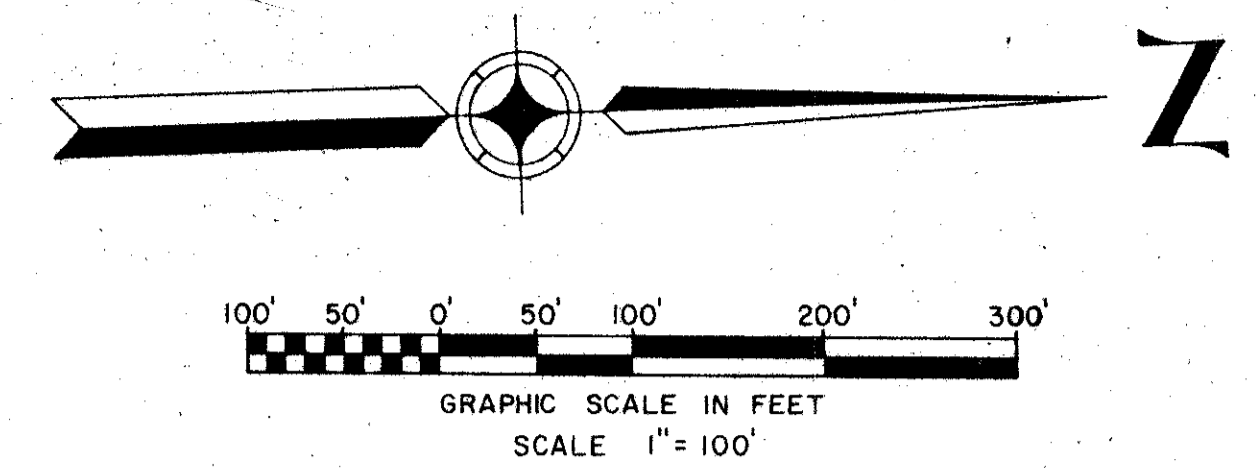
TOTAL ACREAGE OF PROJECT 78.2 ac TOTAL NUMBER OF DWELLING UNITS 58  
 GROSS DENSITY OF PROJECT .74/ac  
 PERCENTAGE OF PROJECT IN RESIDENTIAL USE 77.1% BUILDING COVERAGE 5%  
 PERCENTAGE OF PROJECT IN COMMERCIAL USE 0% BUILDING COVERAGE 0%  
 PERCENTAGE OF PROJECT IN STREETS AND UNCOVERED PARKING 13%  
 PERCENTAGE OF PROJECT IN OPEN SPACE (excluding golf course, uncovered parking, driveways, other impervious surfaces, and water bodies) 80%  
 PERCENTAGE OF PROJECT IN SCHOOLS 0% CHURCHES 0%  
 PERCENTAGE OF PROJECT IN HOSPITAL AND CONVALESCENT USE 0%

INDICATE THE TOTAL AREA OF THE FOLLOWING:

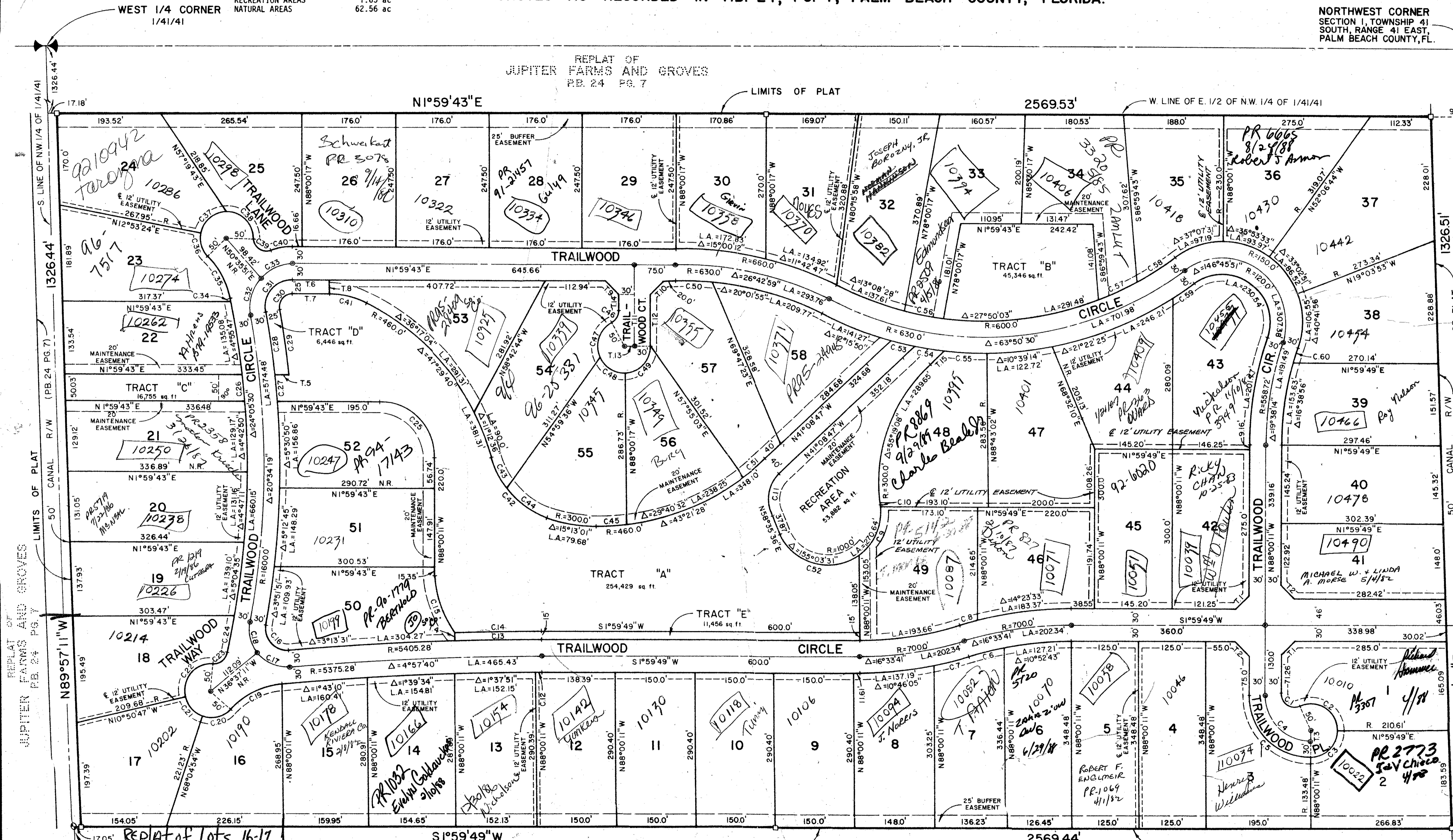
GOLF COURSE 0 ac  
 UNCOVERED PARKING AREAS 1.06 ac  
 WATER BODIES 7.27 ac  
 RECREATION AREAS 1.65 ac  
 NATURAL AREAS 62.56 ac

# PLAT OF TRAILWOOD A P.U.D.

IN SECTION 1, TOWNSHIP 41 SOUTH, RANGE 41 EAST, PALM BEACH COUNTY, FLORIDA;  
 BEING A REPLAT OF A PORTION OF THE REPLAT OF JUPITER FARMS AND GROVES AS RECORDED IN P.B. 24, PG. 7, PALM BEACH COUNTY, FLORIDA.



6



REPLAT of Lots 16-17 CENTER OF SECTION 18

PB. 39/176

No.	Radius	Delta	Length of Curve
1.	25.00'	113° 34' 41"	49.56'
2.	50.00'	113° 34' 41"	99.12'
3.	50.00'	90° 00' 00"	78.54'
4.	85.00'	90° 00' 00"	133.82'
5.	115.00'	90° 00' 00"	180.64'
6.	670.00'	5° 40' 58"	66.45'
7.	730.00'	5° 47' 36"	73.81'
8.	730.00'	2° 10' 28"	27.63'
9.	100.00'	64° 21' 08"	11.72'
10.	100.00'	0° 59' 03"	11.72'
11.	70.00'	80° 15' 37"	98.06'
12.	5345.28'	0° 07' 28"	11.61'
13.	5405.28'	1° 44' 09"	163.76'
14.	5420.28'	1° 43' 52"	163.77'
15.	207.67'	31° 12' 44"	113.13'
16.	49.80'	105° 13' 45"	73.46'

No.	Radius	Delta	Length of Curve
17.	70.00'	54° 54' 44"	67.09'
18.	70.00'	50° 19' 01"	61.47'
19.	150.00'	42° 14' 40"	110.58'
20.	50.00'	67° 17' 40"	58.73'
21.	50.00'	54° 14' 07"	49.95'
22.	50.00'	107° 03' 36"	93.43'
23.	25.00'	81° 35' 03"	35.60'
24.	1570.00'	2° 32' 38"	69.71'
25.	100.00'	90° 00' 00"	157.08'
26.	1570.00'	1° 49' 59"	50.23'
27.	1630.00'	1° 45' 54"	50.21'
28.	1630.00'	0° 12' 59"	46.25'
29.	1655.00'	4° 18' 32"	124.46'
30.	25.00'	100° 18' 08"	43.77'
31.	50.00'	100° 18' 08"	87.53'
32.	80.00'	56° 26' 27"	73.22'
33.	80.00'	47° 51' 41"	66.83'
34.	1870.00'	0° 12' 30"	5.71'
35.	150.00'	35° 23' 02"	92.63'

No.	Radius	Delta	Length of Curve
36.	50.00'	57° 44' 09"	50.38'
37.	50.00'	79° 06' 19"	69.03'
38.	50.00'	91° 26' 08"	79.79'
39.	25.00'	112° 54' 50"	49.27'
40.	110.00'	21° 28' 42"	41.24'
41.	150.00'	27° 18' 35"	71.50'
42.	170.00'	59° 22' 16"	176.16'
43.	170.00'	26° 50' 13"	79.63'
44.	170.00'	32° 32' 03"	96.53'
45.	460.00'	7° 02' 50"	56.68'
46.	25.00'	62° 10' 55"	27.13'
47.	50.00'	83° 25' 37"	72.80'
48.	50.00'	68° 45' 18"	60.00'
49.	50.00'	50° 00' 00"	78.54'
50.	600.00'	0° 41' 04"	79.06'
51.	460.00'	8° 38' 06"	53.27'
52.	100.00'	89° 33' 06"	78.39'
53.	660.00'	4° 12' 59"	47.56'
54.	660.00'	8° 27' 28"	51.37'

REPLAT OF JUPITER FARMS AND GROVES P.B. 24 PG. 7

No.	Radius	Delta	Length of Curve
55.	660.00'	6° 29' 24"	74.76'
56.	600.00'	7° 10' 00"	75.05'
57.	600.00'	7° 38' 22"	80.00'
58.	600.00'	8° 03' 37"	84.41'
59.	640.00'	4° 23' 07"	50.51'
60.	528.72'	2° 59' 18"	27.58'

NOTES:

- There shall be no buildings or structures placed on public utility and buffer easements.
- There shall be no buildings or the planting of trees or shrubs on drainage easements.
- Bearings shown herein refer to an assumed bearing of South 89° 58' 10" East along the North line of the Northwest quarter of Section 1, Township 41 South, Range 41 East, Palm Beach County, Florida.
- ⊙ = Denotes Permanent Control Points (P.C.P.)
- ⊠ = Denotes Permanent Reference Monuments (P.R.M.)
- R = Denotes radial line.
- N.R. = Denotes non-radial line.

NORTH 1/4 CORNER 1/41/41

TANGENT DATA

No.	Bearing	Distance
1.	N. 43° 00' 11" W.	35.36'
2.	N. 46° 59' 49" E.	35.36'
3.	N. 88° 00' 11" W.	20.00'
4.	N. 88° 00' 11" W.	15.01'
5.	N. 1° 59' 43" E.	25.14'
6.	N. 1° 59' 43" E.	70.00'
7.	N. 1° 59' 43" E.	70.00'
8.	N. 88° 00' 17" W.	25.00'
9.	N. 46° 59' 49" E.	35.36'
10.	N. 43° 00' 17" W.	35.36'
11.	N. 88° 00' 17" W.	150.00'
12.	N. 88° 00' 17" W.	95.00'
13.	N. 1° 59' 43" W.	20.00'
14.	N. 88° 00' 17" W.	28.67'
15.	N. 41° 08' 47" W.	32.31'

This instrument was prepared by Craig L. Wallace, at the office of William G. Wallace, Inc., 321 Northlake Blvd, Suite 109, North Palm Beach, Florida 33408

PLAT OF TRAILWOOD

WILLIAM G. WALLACE, INC.  
 Consulting Engineers & Land Surveyors  
 321 Northlake Blvd., North Palm Beach, Florida

FIELD: D.L.	JOB NO.: J77-960	FILE NO.: 1-41-41
OFFICE: W.D.J.	DATE: FEB. 1978	DWG NO.: 77-820
CK'D: C.L.W.	REF: 77-820	SHEET 2 OF 2

35-6

0322-300

1/41/41