

# PLAT NO.9 QUAIL RIDGE

(A PLANNED UNIT DEVELOPMENT)

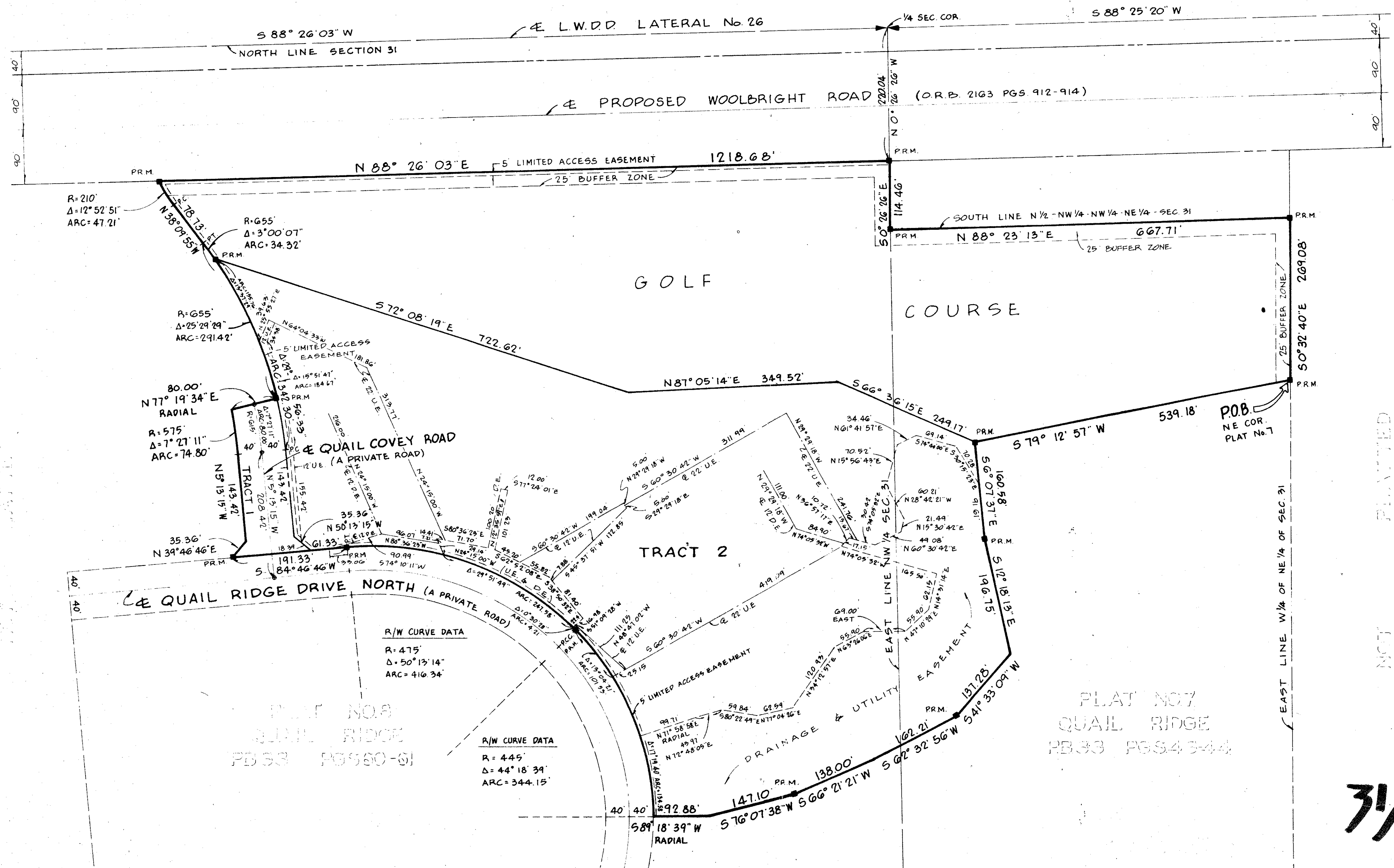
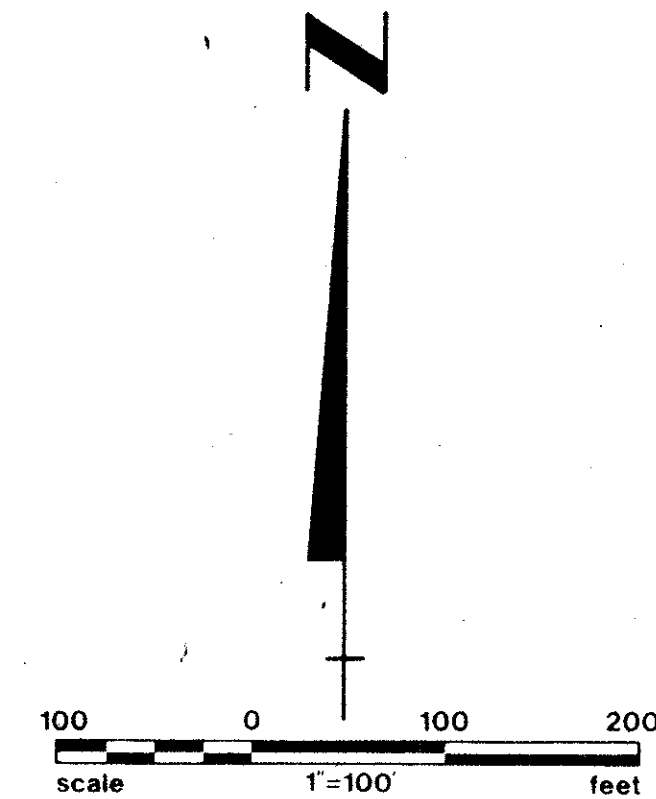
BEING A SUBDIVISION OF A PORTION OF THE NORTH ONE-HALF OF  
SECTION 31, TOWNSHIP 45 SOUTH, RANGE 43 EAST

PALM BEACH COUNTY, FLORIDA

IN 2 SHEETS SHEET NO. 2

8

STATE OF FLORIDA  
COUNTY OF PALM BEACH  
This Plat was filed for record at  
this \_\_\_\_\_ day of \_\_\_\_\_, 1978,  
and duly recorded in Plat Book No.  
on page  
JOHN B. DUNKLE, Clerk Circuit Court  
By \_\_\_\_\_ D.C.



- NOTES:
- = PERMANENT REFERENCE MONUMENT (P.R.M.)
  - = PERMANENT CONTROL POINT (P.C.P.)
  - D.E. = DRAINAGE EASEMENT
  - U.E. = UTILITY EASEMENT
- MINIMUM SETBACK REQUIREMENTS
- |                 |         |
|-----------------|---------|
| FRONT           | 25 FEET |
| SIDE (interior) | 15 FEET |
| SIDE (corner)   | 25 FEET |
| REAR            | 25 FEET |
- AREA TRACT 1 = 0.471 ACRES  
 AREA TRACT 2 = 14.060 ACRES  
 AREA GOLF COURSE = 12.690 ACRES  
 TOTAL AREA = 27.22 ACRES  
 TOTAL DWELLING UNITS = 74  
 DENSITY = 2.72 D.U. PER GROSS ACRE

PLAT NO. 8  
QUAIL RIDGE  
PB 33 PGS 60-61

PLAT NO. 7  
QUAIL RIDGE  
PB 33 PGS 43-44

QUAIL RIDGE #9

3/45/43

1000-102  
35-8