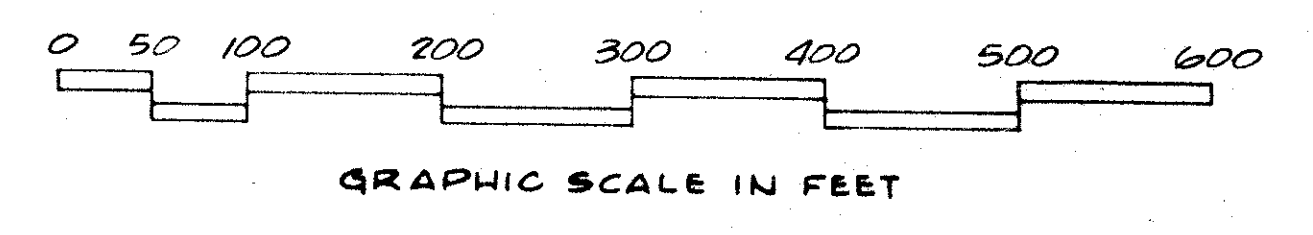
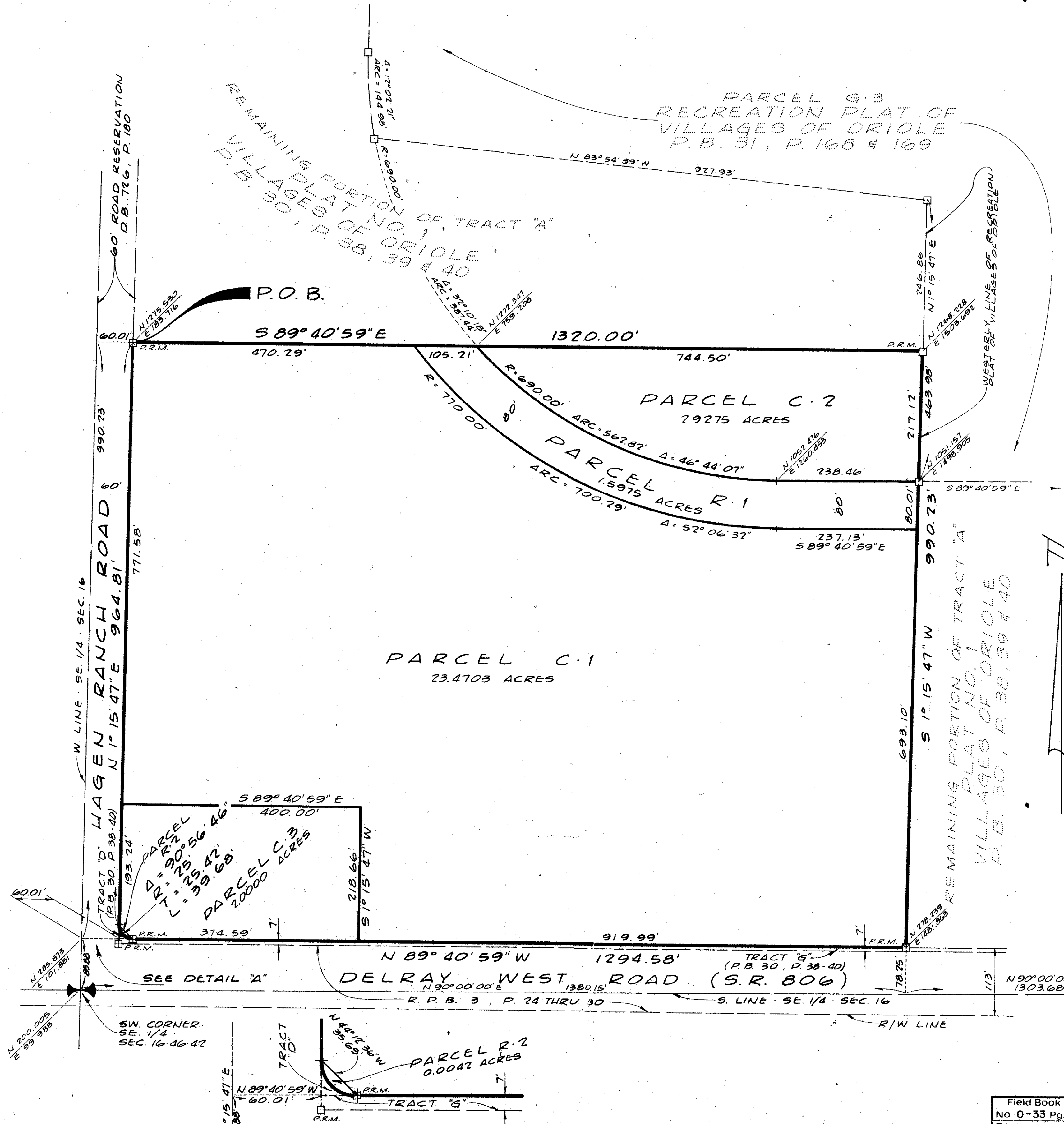


A PLANNED COMMERCIAL DEVELOPMENT
VILLAGES OF ORIOLE SHOPS
 PALM BEACH COUNTY, FLORIDA
 IN TWO SHEETS - SHEET NO. TWO

10



COORDINATES & MERIDIAN
 OF PLAT NO. 1, VILLAGES OF
 ORIOLE (PL. BK. 30, PP. 38-40)

0326.312

35
 10

16/46/42

VILLAGES ORIOLE SHOPS

REF: H.C. 279.B

Field Book No. 0-33 Pg. 32	ROBERT E. OWEN & ASSOCIATES, INC.	A PLANNED COMMERCIAL DEVELOPMENT	Job No. 78-1028
Design D.M. WHITE	ENGINEERS - PLANNERS - SURVEYORS	WEST PALM BEACH FLORIDA	Scale 1" = 100'
Drawn M. SIKORA			Date
Checked D.M. WHITE			Sheet of 2
Field R. FRALICK			File No. BF-2185-E