

WOOD HILL ESTATES .

BEING A SUBDIVISION OF A PORTION
OF THE SE 1/4 OF THE NW 1/4 OF
SECTION 29 TWP. 41 S, RGE. 43 E
PALM BEACH COUNTY, FLORIDA

IN 2 SHEETS

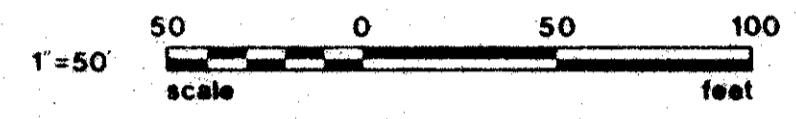
SHEET NO. 2

FEBRUARY 1978

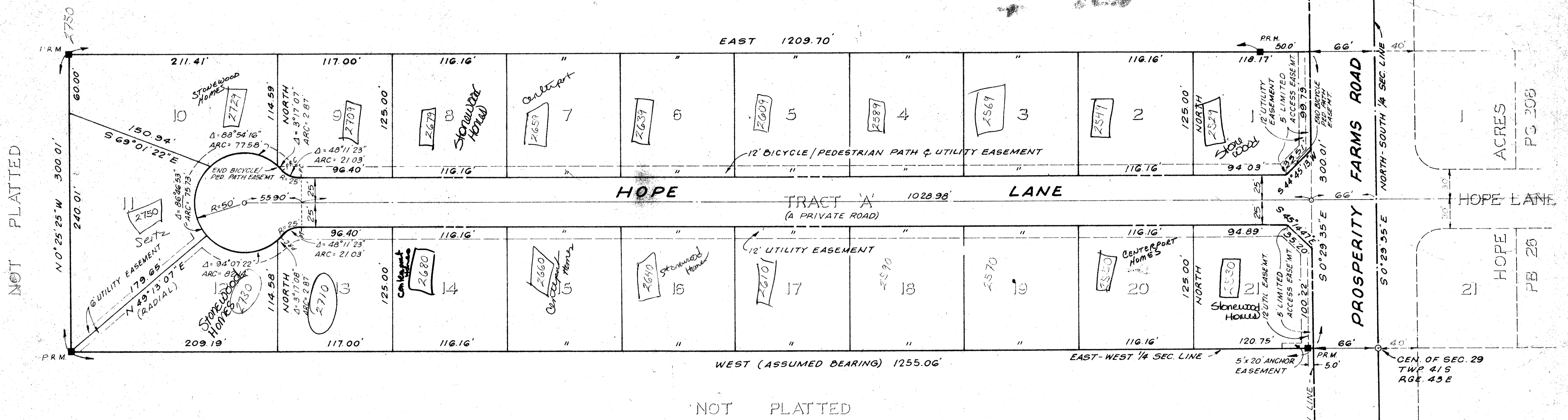
MOCK, ROOS & SEARCY, INC.
CONSULTING ENGINEERS
WEST PALM BEACH, FLORIDA

41

STATE OF FLORIDA
COUNTY OF PALM BEACH
This Plat was filed for record at
this day of 1978
and duly recorded in Plat Book No.
on page
JOHN B DUNKLE Clerk Circuit Court
By _____ D.C.



NOT PLATTED



NOT PLATTED

NOT PLATTED

LOT NO.	AREA OF LOTS	
	SQUARE FEET	ACRES
1	14,520.57	0.3333
2 thru 8	14,520.00	0.3333
9	14,558.75	0.3342
10	19,591.83	0.4498
11	20,702.93	0.4753
12	15,657.90	0.3595
13	14,558.74	0.3342
14 thru 20	14,520.00	0.3333
21	14,719.61	0.3379

NOTES:
THERE SHALL BE NO BUILDINGS OR STRUCTURES PLACED ON UTILITY EASEMENTS.
BEARING REFERENCE: THE EAST-WEST 1/4 SECTION LINE OF SECTION 29, T-41S, R-43E IS ASSUMED TO BEAR WEST.
■ = PERMANENT REFERENCE MONUMENT (P.R.M.)
○ = PERMANENT CONTROL POINT (P.C.P.)

12

1000-705

Turnout

WOOD HILL ESTATES

29/41/43

35
41