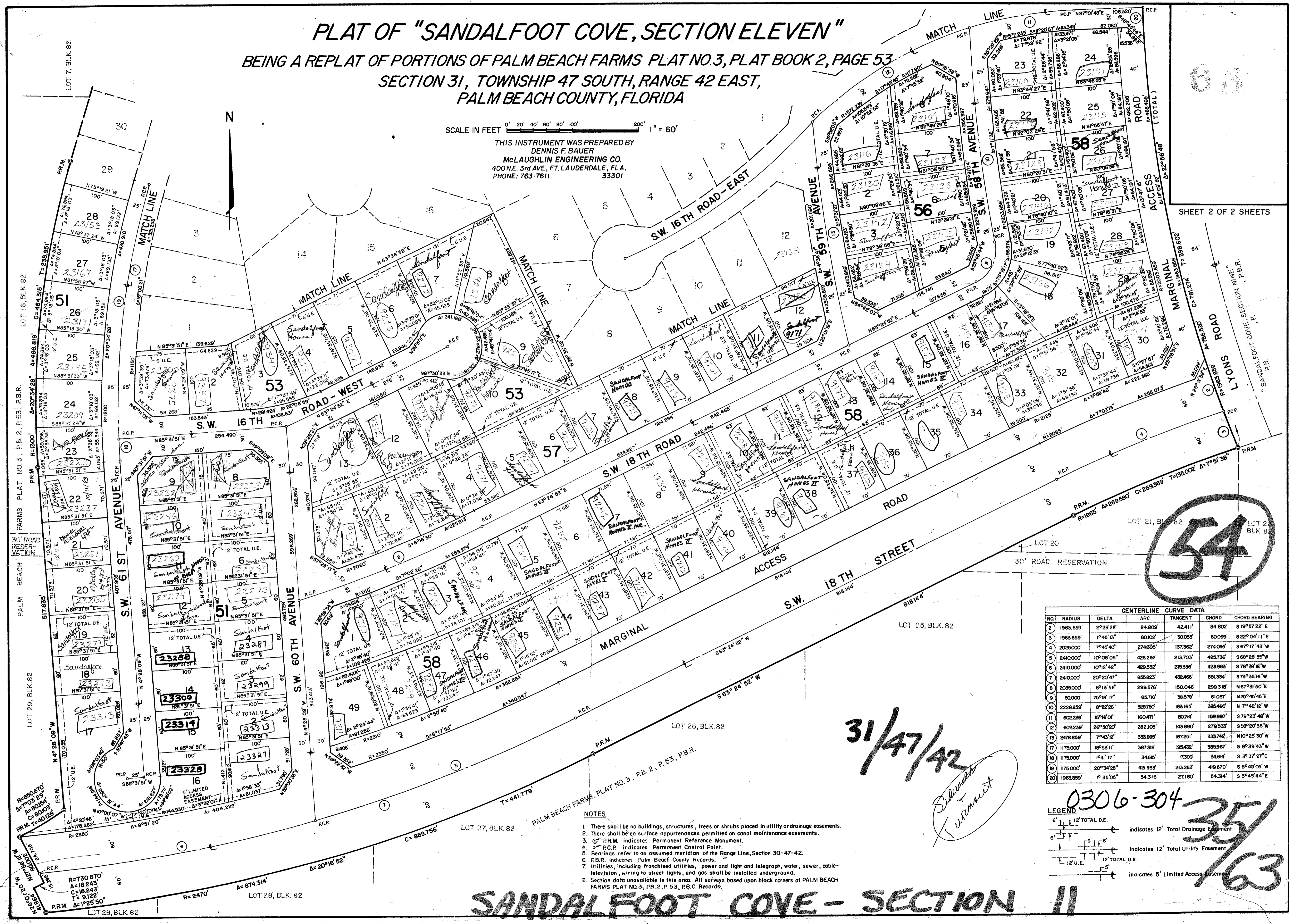


# PLAT OF "SANDALFOOT COVE, SECTION ELEVEN"

BEING A REPLAT OF PORTIONS OF PALM BEACH FARMS PLAT NO.3, PLAT BOOK 2, PAGE 53  
SECTION 31, TOWNSHIP 47 SOUTH, RANGE 42 EAST,  
PALM BEACH COUNTY, FLORIDA

SCALE IN FEET  
0' 20' 40' 60' 80' 100' 200' 1" = 60'

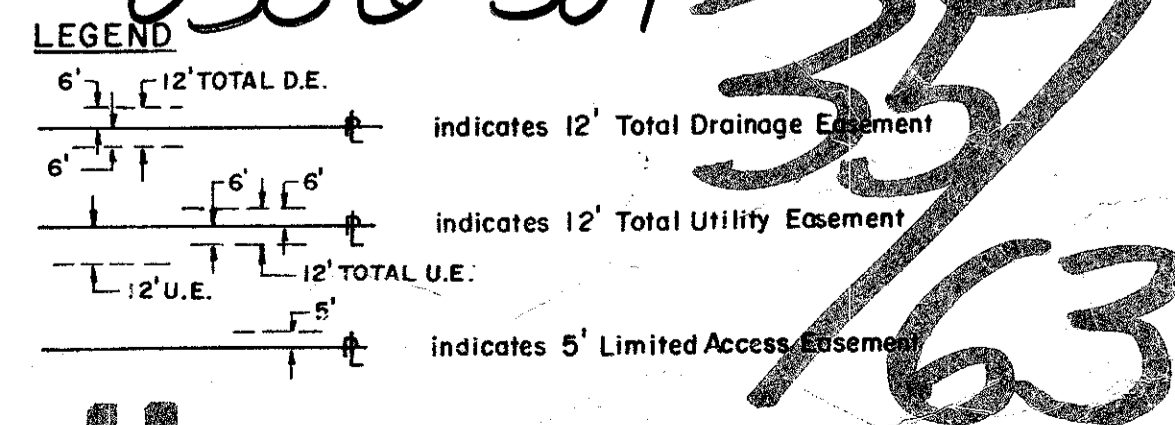
THIS INSTRUMENT WAS PREPARED BY  
DENNIS F. BAUER  
McLAUGHLIN ENGINEERING CO.  
400 N.E. 3rd AVE., FT. LAUDERDALE, FLA. 33301  
PHONE: 763-7611



54

CENTERLINE CURVE DATA						
NO.	RADIUS	DELTA	ARC	TANGENT	CHORD	CHORD BEARING
2	1963.899'	2°28'28"	84.809'	42.411'	84.802'	S 19°57'22" E
3	1963.859'	1°45'13"	60.102'	30.053'	60.099'	S 22°04'11" E
4	2025.000'	7°46'40"	274.300'	137.362'	274.095'	S 67°17'43" W
5	2410.000'	10°08'05"	426.292'	213.703'	426.736'	S 68°28'55" W
6	2410.000'	10°12'42"	429.532'	215.336'	428.963'	S 78°39'18" W
7	2410.000'	20°20'47"	855.623'	432.466'	851.334'	S 73°35'16" W
8	2085.000'	8°13'56"	299.576'	150.046'	299.318'	N 67°31'50" E
9	50.000'	75°18'17"	65.716'	36.576'	61.087'	N 25°46'46" E
10	2229.859'	8°22'26"	325.750'	163.165'	325.460'	N 7°42'12" W
11	602.239'	15°16'01"	160.471'	80.714'	159.997'	S 79°23'48" W
12	602.239'	26°50'20"	282.105'	143.690'	279.533'	S 68°20'38" W
13	2478.859'	7°43'12"	333.985'	167.251'	333.742'	N 10°25'30" W
14	1175.000'	16°53'11"	387.318'	195.432'	385.567'	S 6°39'43" W
15	1175.000'	1°41'17"	34.815'	17.309'	34.614'	S 3°37'27" E
16	1175.000'	20°34'28"	421.933'	213.263'	419.670'	S 5°49'05" W
19	1963.859'	1°35'05"	54.316'	27.160'	54.314'	S 3°44'44" E

- NOTES**
- There shall be no buildings, structures, trees or shrubs placed in utility or drainage easements.
  - There shall be no surface appurtenances permitted on canal maintenance easements.
  - PRM indicates Permanent Reference Monument.
  - PCP indicates Permanent Control Point.
  - Bearings refer to an assumed meridian of the Range Line, Section 30-47-42.
  - P.B.R. indicates Palm Beach County Records.
  - Utilities, including franchised utilities, power and light and telegraph, water, sewer, cable-television, wiring to street lights, and gas shall be installed underground.
  - Section data unavailable in this area. All surveys based upon block corners of PALM BEACH FARMS PLAT NO.3, P.B.2, P.53, P.B.C. Records.



31/47/42

Dennis F. Bauer  
McLaughlin Engineering Co.

## SANDALFOOT COVE - SECTION 11