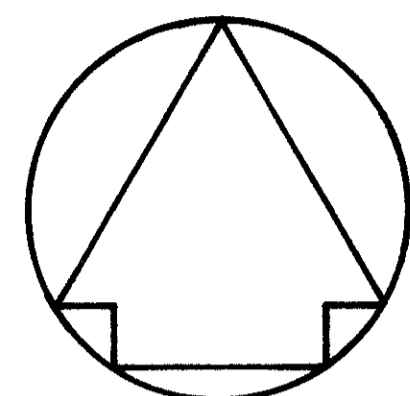


STATE OF FLORIDA
COUNTY OF PALM BEACH
THIS PLAT WAS FILED FOR
RECORD AT
THIS DAY OF
AD, 1978 AND DULY RECORDED
IN PLAT BOOK ON PAGES
AND
JOHN B. DUNKLE, CLERK
CIRCUIT COURT
BY: _____ DC

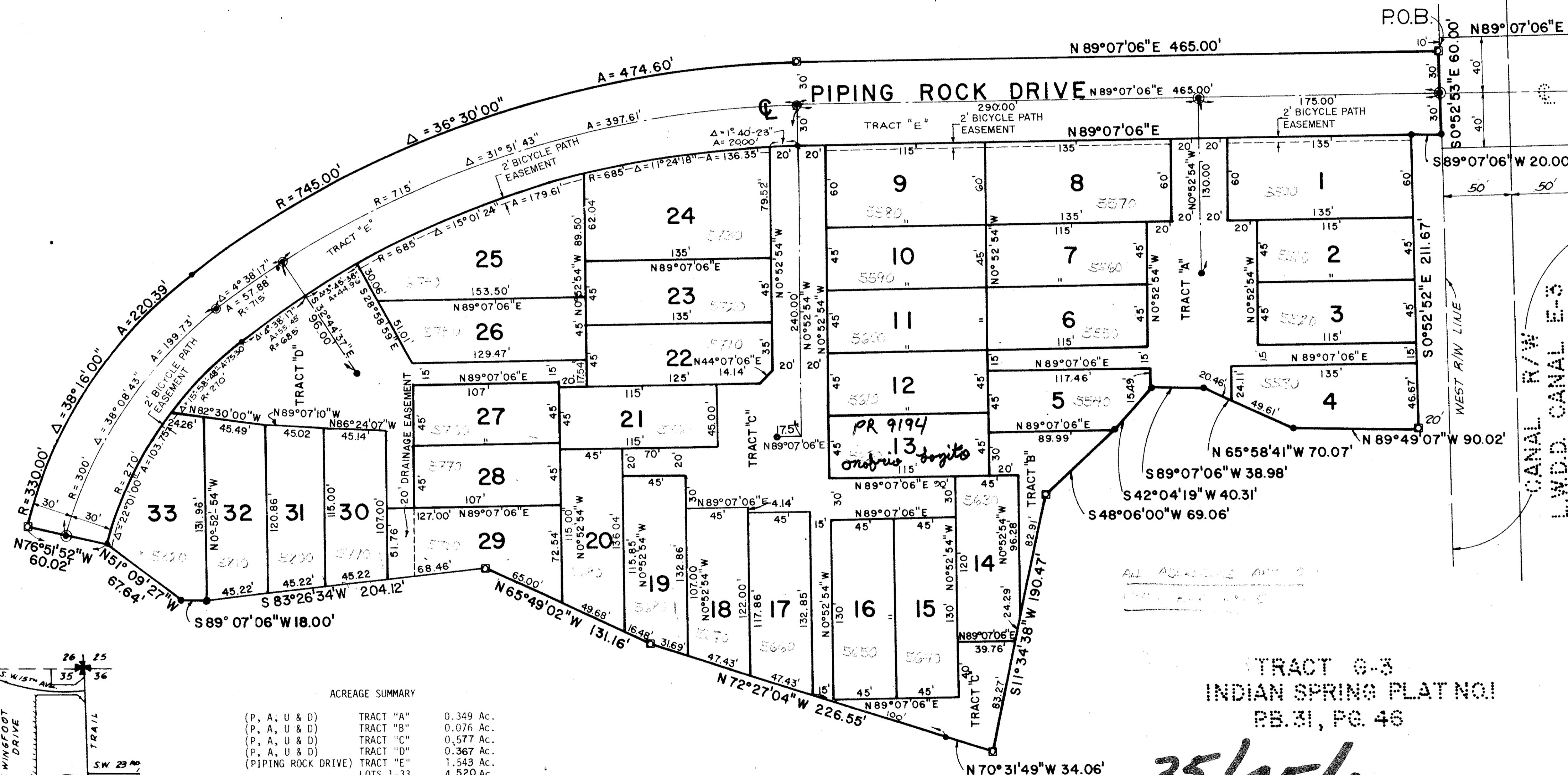
A PORTION OF INDIAN SPRING A PLANNED UNIT DEVELOPMENT THE VILLAS OF GREEN GLEN II

A PARCEL OF LAND IN THE NORTHWEST ONE-QUARTER AND THE SOUTHWEST ONE-QUARTER OF SECTION 35, TOWNSHIP 45 SOUTH, RANGE 42 EAST. A REPLAT OF A PORTION OF TRACT G-3, BLOCK 4, BLOCK 5, SPYGLASS LANE, TRACT C-4 AND PIPING ROCK DRIVE "INDIAN SPRINGS PLAT NO.1" ACCORDING TO THE PLAT THEREOF AS RECORDED IN PLAT BOOK 31, PAGES 43-47 OF THE PUBLIC RECORDS OF PALM BEACH COUNTY, FLORIDA. FURTHER, ABOVE SAID PORTIONS OF LAND HAVE BEEN ABANDONED BY O.R.B. 2536 PG. 998 AND O.R.B. 2873 PG 1717.



GRAPHIC SCALE 1" = 50'

UNPLATTED



PIPING ROCK DRIVE
INDIAN SPRING PLAT NO.1
PB 31, P 45

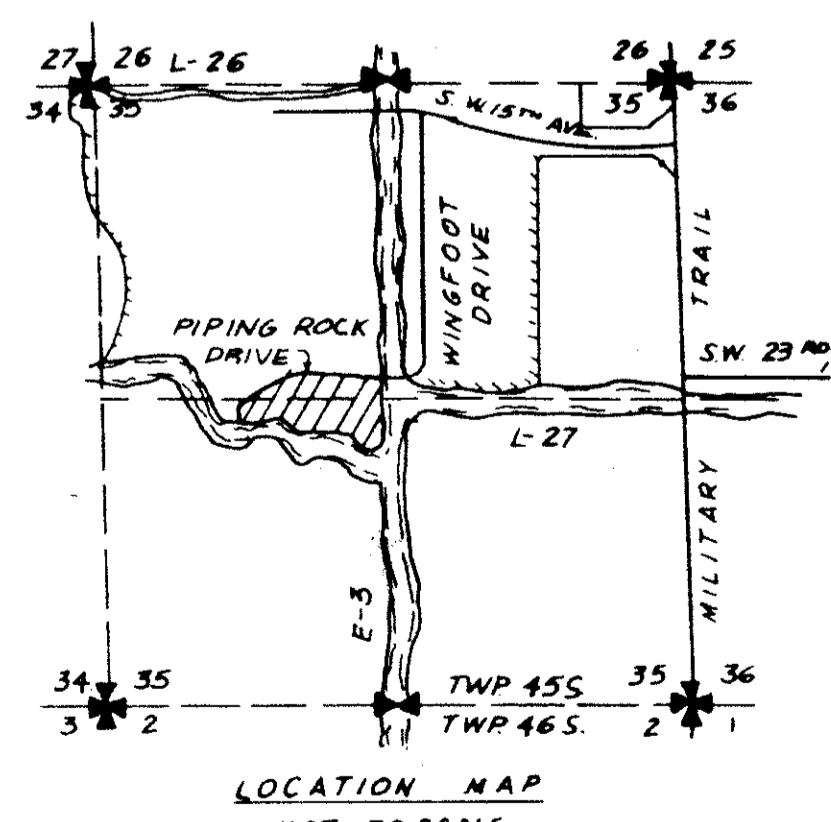
35

0259-306
35/68

TRACT G-3
INDIAN SPRING PLAT NO.1
PB. 31, PG. 46

35/45/42

RS-Field
MA-008



ACREAGE SUMMARY

(P, A, U & D)	TRACT "A"	0.349 Ac.
(P, A, U & D)	TRACT "B"	0.076 Ac.
(P, A, U & D)	TRACT "C"	0.577 Ac.
(P, A, U & D)	TRACT "D"	0.367 Ac.
(P, A, U & D)	TRACT "E"	1.543 Ac.
	LOTS 1-33	4,520 Ac.
	TOTAL	7,432 Ac.

PLANNED UNIT DEVELOPMENT DATA

TOTAL AREA THIS PLAT	7,432 Ac.
EFFECTIVE BASE RESIDENTIAL AREA	7,432 Ac.
TOTAL UNITS THIS PLAT	33 Units
OPEN SPACE THIS PLAT	4,768 Ac.
DENSITY	4,440 Units/Ac.

TRACT C-4 & G-3
INDIAN SPRING PLAT NO.1
PB. 31, PG. 46

☐ DENOTES PRM. (PERMANENT REFERENCE MONUMENT)
● DENOTES P.C.P. (PERMANENT CONTROL POINT)

EDM EDM SURVEYING & MAPPING INC.
2300 PALM BEACH LAKES BOULEVARD
SUITE 109 305 684 3770
WEST PALM BEACH, FL 33409

WANTMAN & ASSOCIATES, INC.
CONSULTING ENGINEERS
WEST PALM BEACH FLORIDA

PLAT OF
THE VILLAS OF GREEN GLEN II

DRAWN	NO	FIELD BOOK	DATE	JOB NO.	SHEET
RUBEN	NO	PG.	JUNE, 1978	78-033	2
DESIGNED	CHECKED	SCALE	DRAWING NO.		OF
W.L.F.	W.L.F.	1" = 50'	78-06-007		2