

PLAT OF
FRENCHMAN'S CREEK

PLANNED UNIT DEVELOPMENT
 PLAT NO. 2

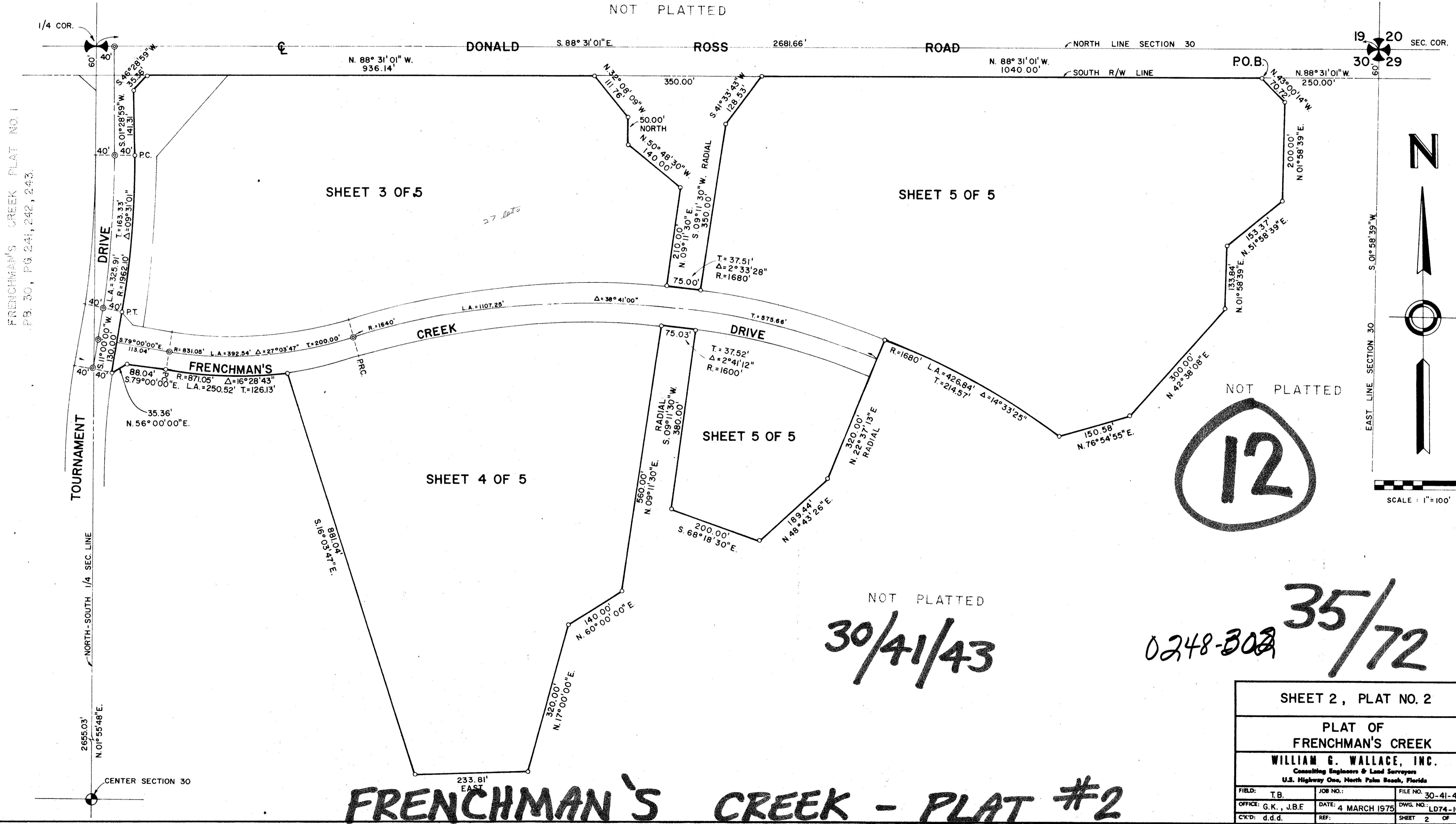
IN SEC. 30, TWP. 41S., RGE. 43E.

PALM BEACH COUNTY, FLORIDA

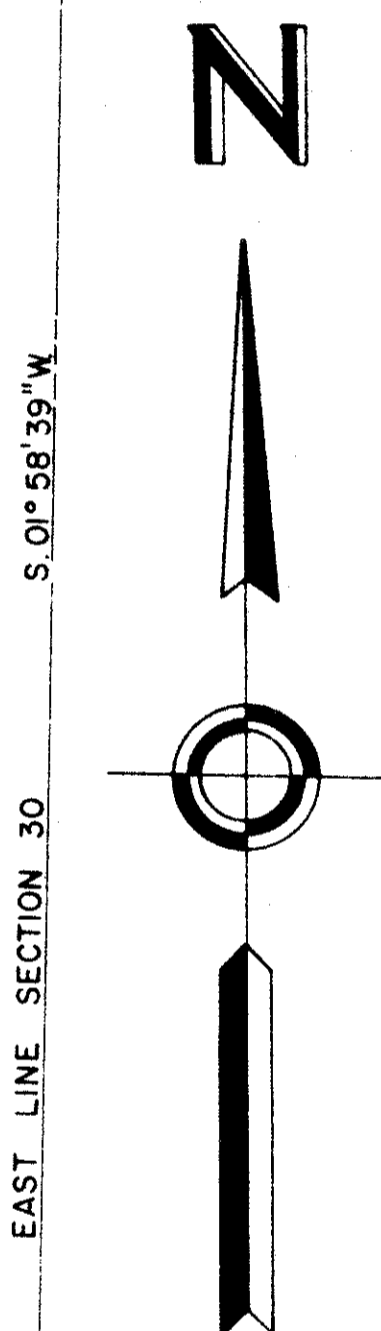
SHEET 2 OF 5

72

NOT PLATTED



FRENCHMAN'S CREEK PLAT NO. 1
 P.B. 30, P.G. 241, 242, 243.



NOT PLATTED
 30/41/43
 0248-308 35/72

FRENCHMAN'S CREEK - PLAT #2

SHEET 2, PLAT NO. 2		
PLAT OF FRENCHMAN'S CREEK		
WILLIAM G. WALLACE, INC. Consulting Engineers & Land Surveyors U.S. Highway One, North Palm Beach, Florida		
FIELD: T.B.	JOB NO.:	FILE NO. 30-41-43
OFFICE: G.K., J.B.E.	DATE: 4 MARCH 1975	DWG. NO.: LD74-1033
CK'D: d.d.d.	REF:	SHEET 2 OF 5