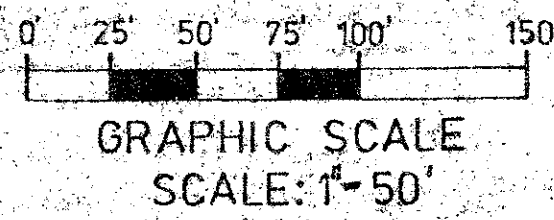


PLAT NO. 1
Century Village West

A PART OF A P.U.D.
"THE HAMPTONS AT BOCA RATON"

SHEET 3 OF 6 SHEETS

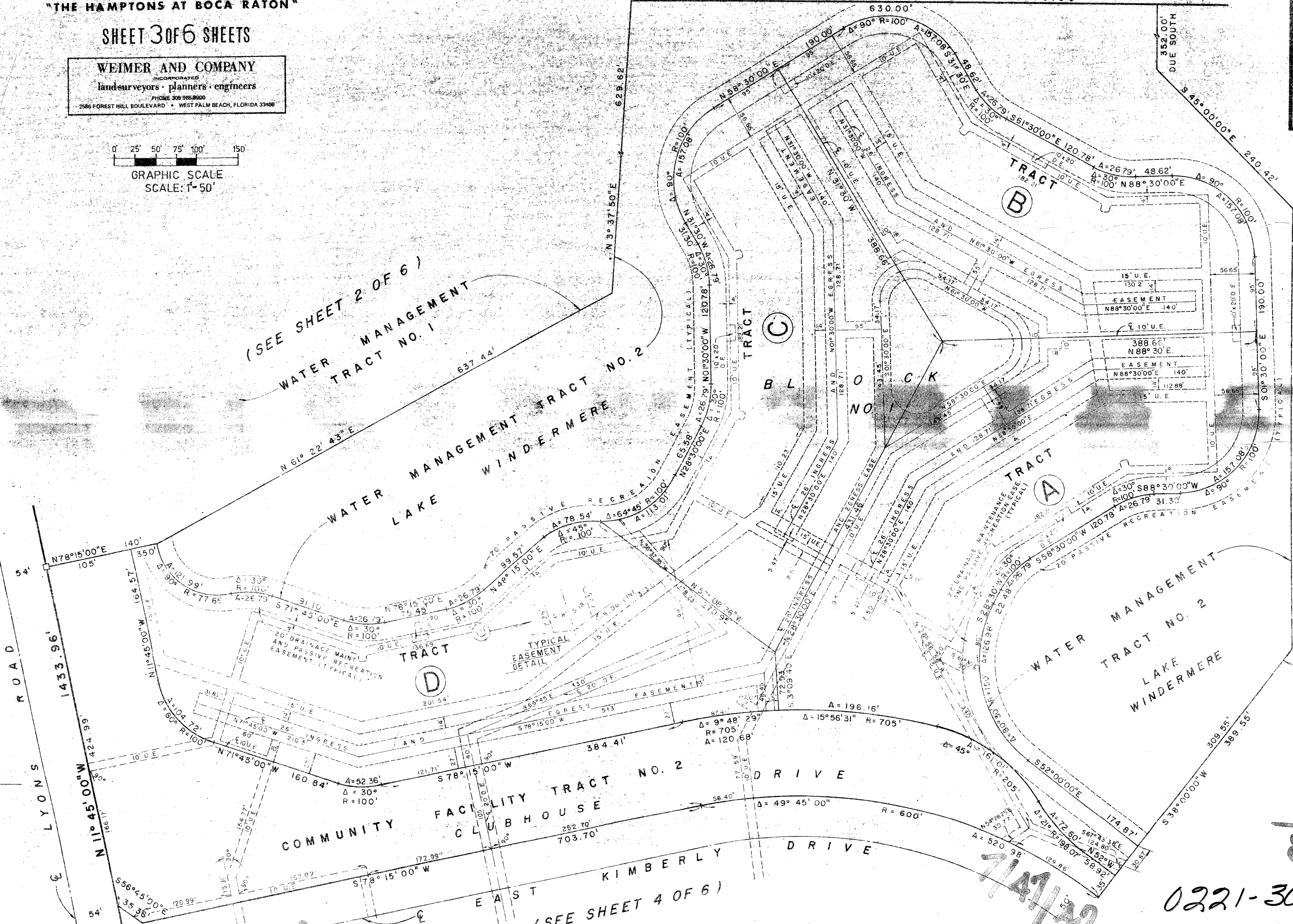
WEIMER AND COMPANY
INCORPORATED
land surveyors · planners · engineers
PHONE 306-9188-8000
2586 FOREST HILL BOULEVARD · WEST PALM BEACH, FLORIDA 33408



82

TRACT PALM BEACH FARMS CO. PLAT NO. 3
47 (P.B. 2 PGS. 45-54)
TRACT 48 TRACT 49

DUE EAST 1670.00'



(SEE SHEET 2 OF 6)
WATER MANAGEMENT TRACT NO. 1

WATER MANAGEMENT TRACT NO. 2
LAKE WINDERMERE

WATER MANAGEMENT TRACT NO. 2
LAKE WINDERMERE

DUE SOUTH 540.04'
WATER MANAGEMENT TRACT NO. 3

(SEE SHEET 6 OF 6)

(SEE SHEET 4 OF 6)

CENTURY VILLAGE WEST

7/14/82
82

0221-302