

PLAT OF CONCEPT HOMES OF LANTANA

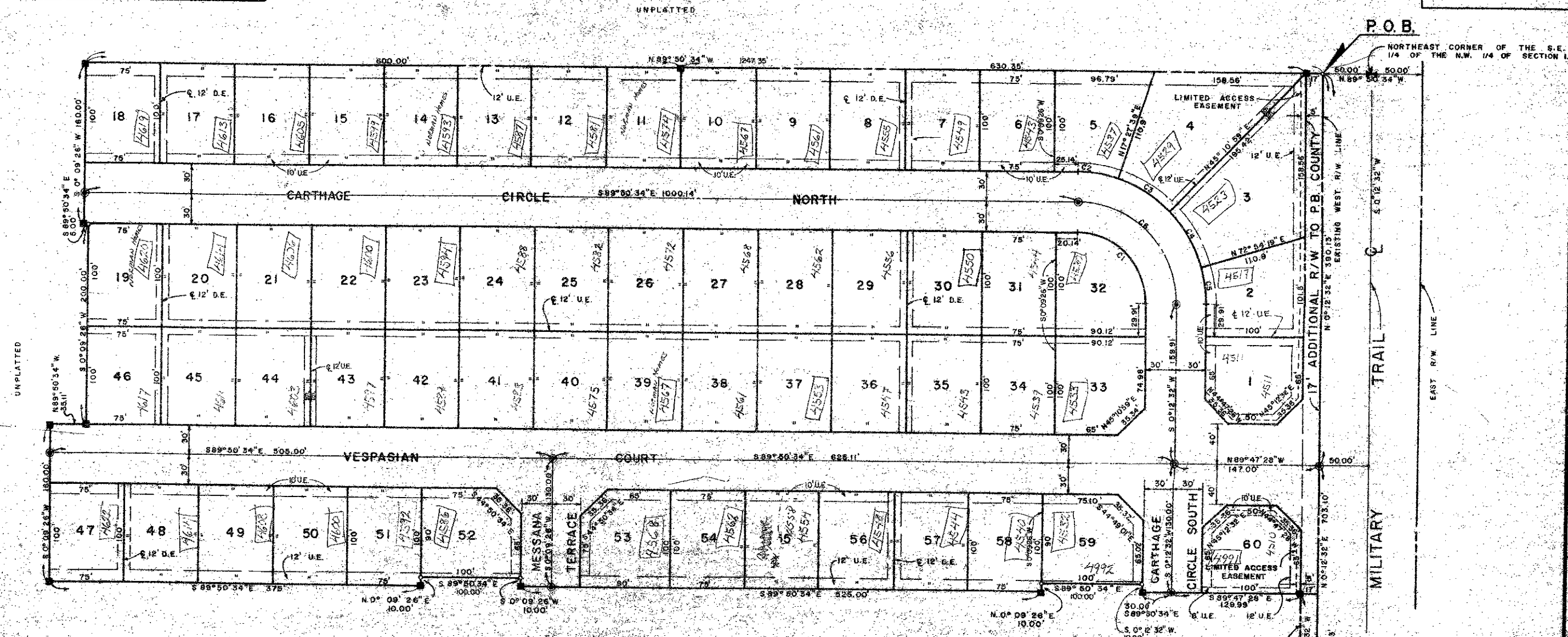
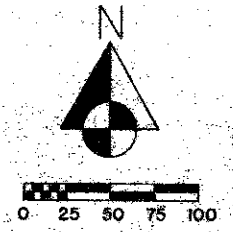
PLAT NO. 1
BEING A PORTION OF SECTION 1, TOWNSHIP 45 SOUTH, RANGE 42 EAST, PALM BEACH COUNTY, FLORIDA

105

STATE OF FLORIDA
COUNTY OF PALM BEACH

THIS PLAT WAS FILED FOR RECORD AT THIS DAY OF AD, 1978 AND DULY RECORDED IN PLAT BOOK ON PAGES AND

JOHN B. DUNKLE, CLERK
CIRCUIT COURT
BY: _____ DC



CURVE TABLE "C" NO.'S

NO.	CHORD	TANG.	RADIUS	DELTA	ARC
1	98.04	70.06	70'	90° 08' 06"	110.02'
2	39.11	19.78	130'	17° 08' 13"	39.25'
3	62.29	32.08	130'	27° 43' 20"	62.90'
4	62.29	32.08	130'	27° 43' 20"	62.90'
5	39.11	19.78	130'	17° 08' 13"	39.25'
6	147.49	100.09	100'	90° 08' 06"	157.17'

223-308

75/105

CONCEPT HOMES OF LANTANA

EDM

EDM SURVEYING & MAPPING INC.
7300 PALM BEACH LAKES BOULEVARD
SUITE 106 PALM BEACH, FL 33409

WANTMAN & ASSOCIATES, INC.

CONSULTING ENGINEERS
WEST PALM BEACH FLORIDA

PLAT OF
CONCEPT HOMES OF LANTANA
PLAT NO. 1

DATE JUNE, 1978	JOB NO. 78009	SHEET 2 OF 2
--------------------	------------------	-----------------

THIS INSTRUMENT WAS PREPARED BY EDWARD W. WARRAND IN THE OFFICES OF EDM SURVEYING & MAPPING INC., 7300 PALM BEACH LAKES BOULEVARD, SUITE 106, WEST PALM BEACH, FLORIDA. PHONE: 694-3270