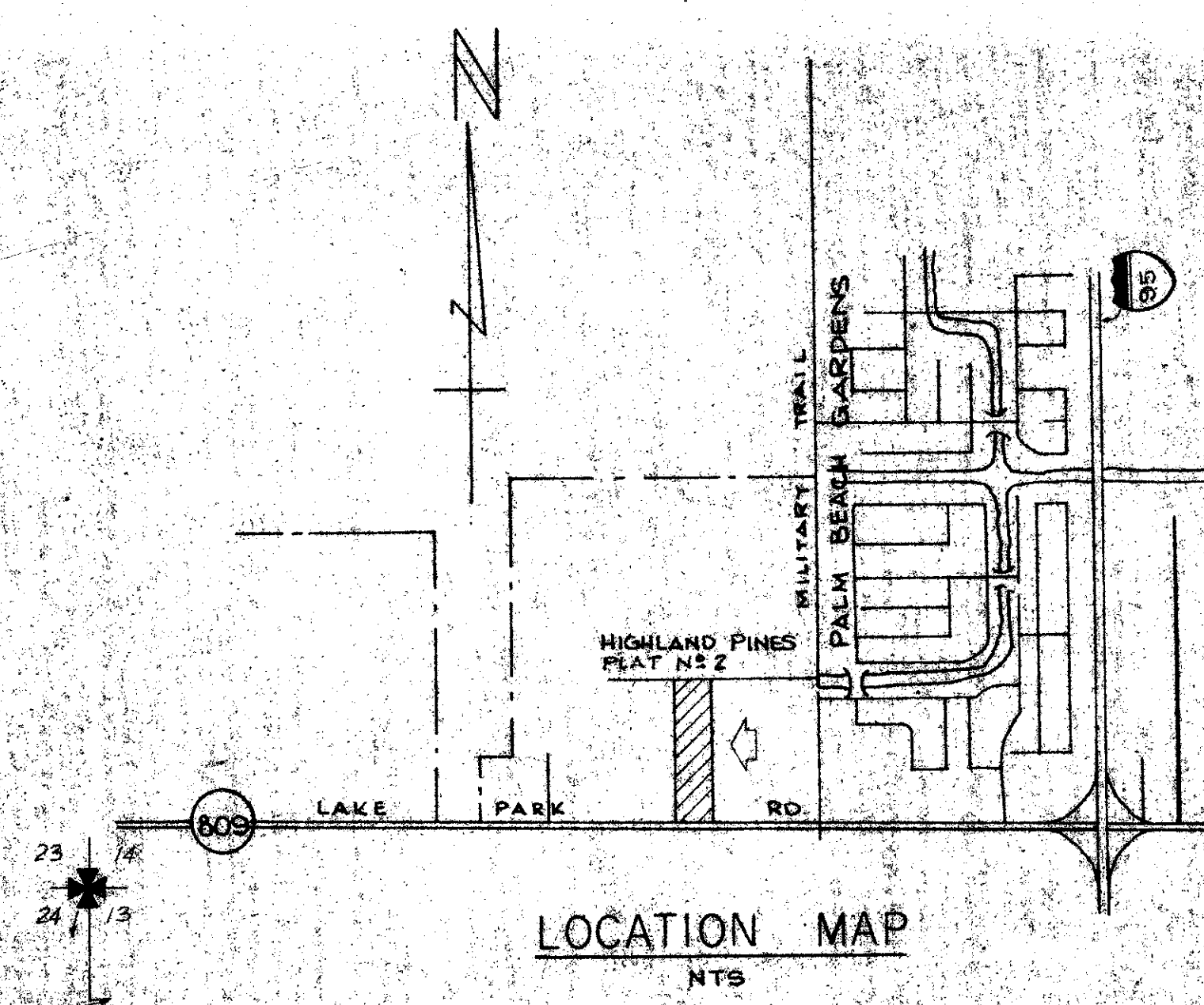
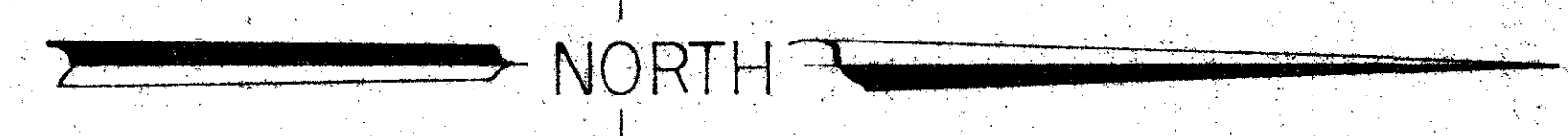
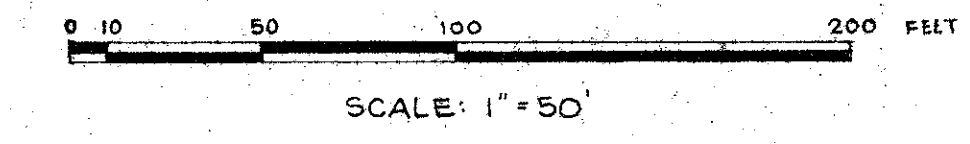


THIS INSTRUMENT PREPARED BY:
WILLIAM A. CURTIS
2829 OKEECHOBEE BOULEVARD
WEST PALM BEACH, FLORIDA

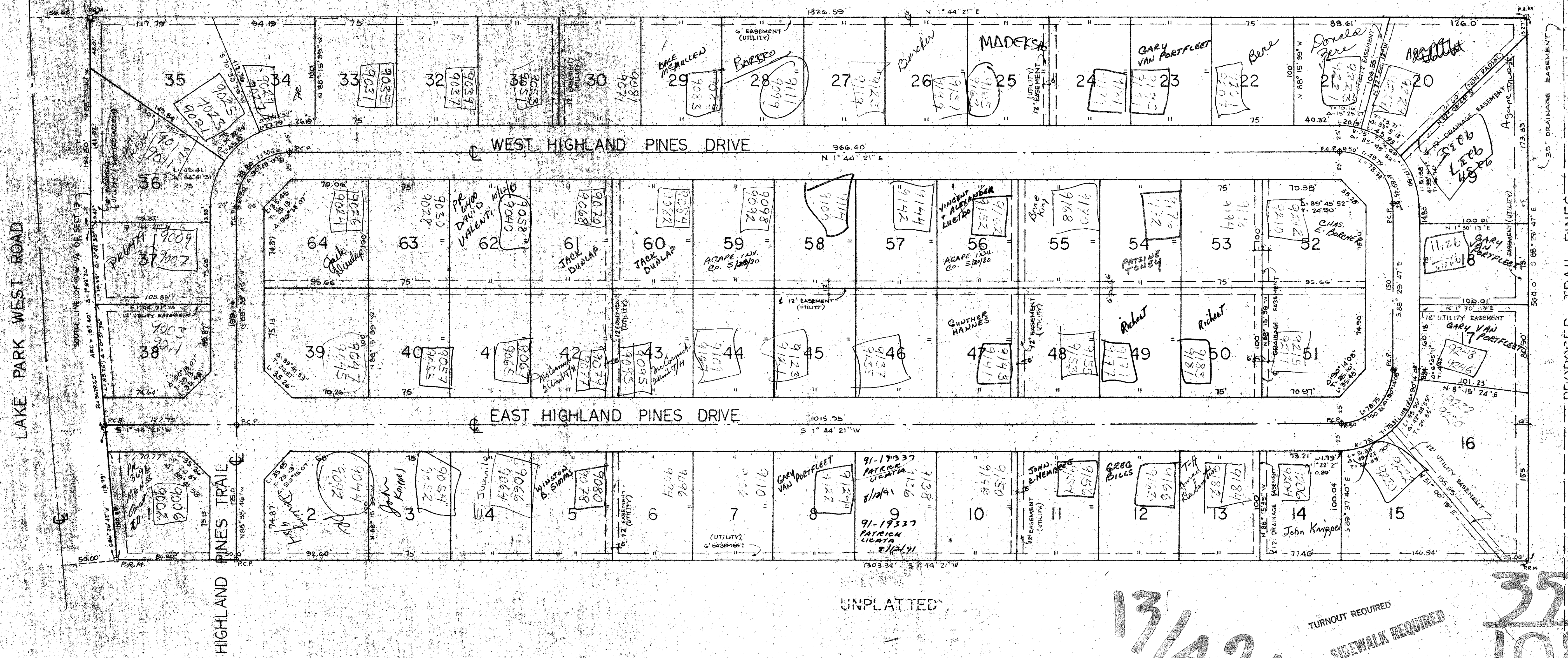
PLAT OF HIGHLAND PINES

PLAT NO. 2

BEING IN SECTION 13 TOWNSHIP 42 SOUTH
RANGE 42 EAST PALM BEACH COUNTY FLORIDA
SHEET 2 IN 2 SHEETS



HIGHLAND PINES SUBDIVISION
PB. 32 PG. 110



UNPLATTED

13/42/42

360-300

TURNOUT REQUIRED
SIDEWALK REQUIRED

32
108

HIGHLAND PINES

JAMES D. CARLTON, INC.
CONSULTING ENGINEERS AND LAND SURVEYORS
2750 OKEECHOBEE BOULEVARD WEST PALM BEACH FLORIDA
683-8800