

PEPPERTREE OF BOCA WEST

P.U.D.
IN PART OF SECTION 9, TWP. 47 S., RGE. 42 E.

PALM BEACH COUNTY, FLORIDA
IN 2 SHEETS SHEET NO. 2

GEE & JENSON
ENGINEERS-ARCHITECTS-PLANNERS, INC.
WEST PALM BEACH, FLORIDA

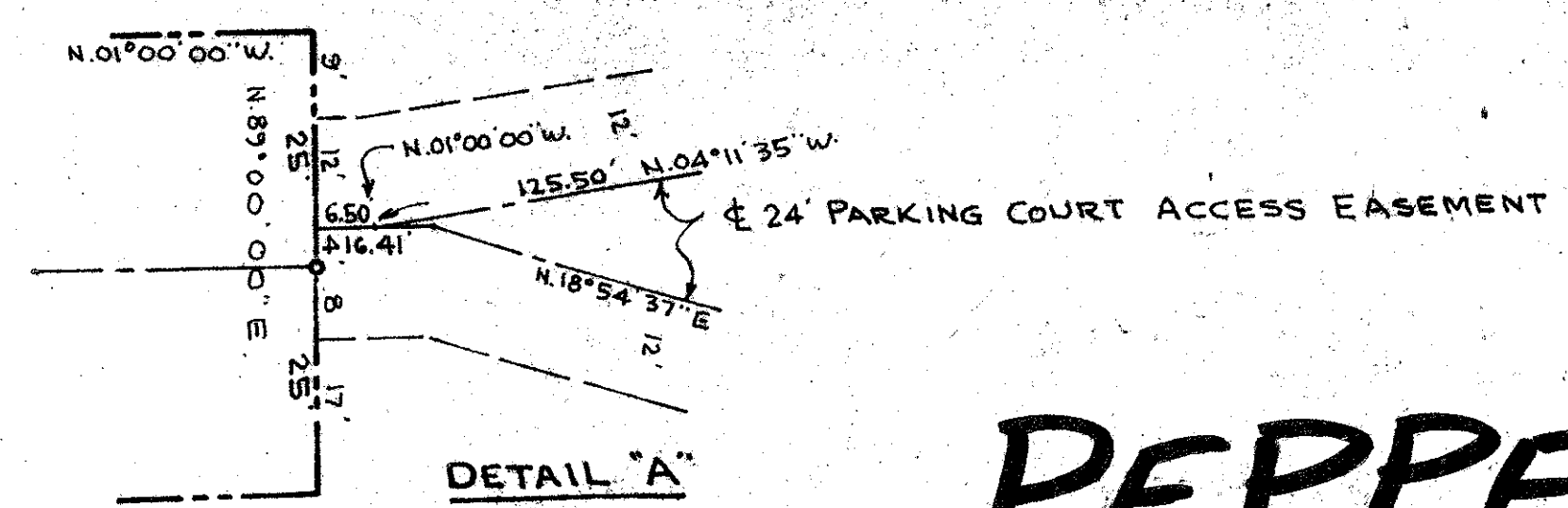
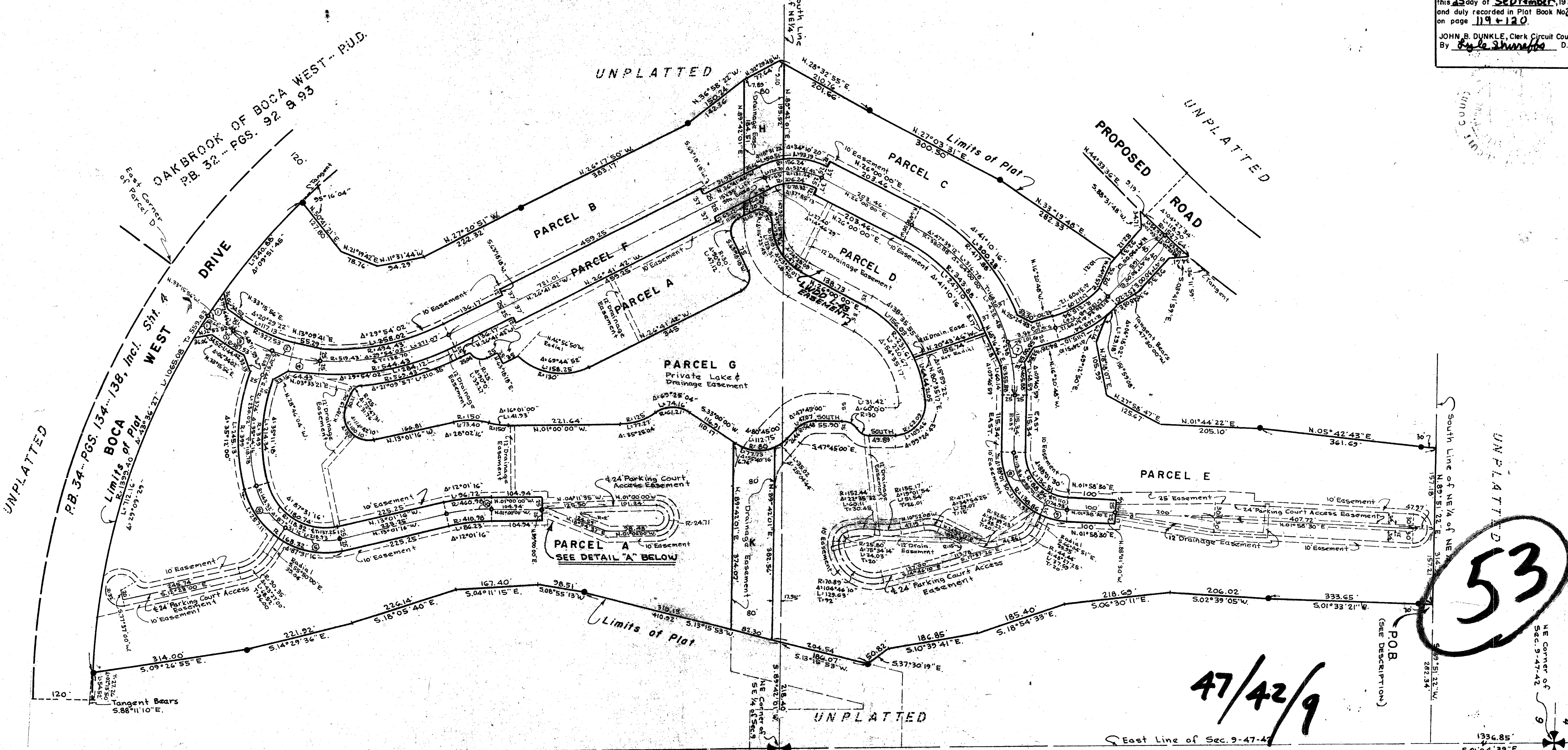
JUNE 1978

SCALE IN FEET SCALE: 1"=100'

119

STATE OF FLORIDA
COUNTY OF PALM BEACH
This Plat was filed for record of 9:15 A.M.
this 25 day of September, 1978,
and duly recorded in Plat Book No. 25
on page 119 & 120.

JOHN B. DUNKLE, Clerk Circuit Court
By *Boyle Shreffels* D.C.



PEPPERTREE

NOTES

- All bearings shown hereon are relative to an assumed meridian used throughout Boca West.
- Building Setback Lines shall be as required by Palm Beach County Zoning Regulations.
- There shall be no buildings or other structure placed on Utility Easements.
- There shall be no buildings or any kind of construction or trees or shrubs placed on Drainage Easements.
- denotes Permanent Reference Monument.
- H, J and K as shown are Parcels ● denotes Permanent Control Point

± CURVE DATA

①	②	③	④	⑤
R= 1399.40	R= 357.53	R= 357.53	R= 357.53	R= 143.32
Δ= 02°17'36"	Δ= 30°03'36"	Δ= 13°31'40"	Δ= 16°31'56"	Δ= 40°20'00"
L= 56.61'	L= 187.58'	L= 84.42'	L= 103.16'	L= 100.89'
T= 28.01'	T= 96'	T= 42.40'	T= 51.94'	T= 52.64'
R= 143.32	R= 380.88	R= 113.86	R= 113.86	R= 435.98
Δ= 47°11'16"	Δ= 16°20'48"	Δ= 66°04'51"	Δ= 21°56'39"	Δ= 12°01'16"
L= 118.04'	L= 108.67'	L= 131.32'	L= 43.61'	L= 31.41'
T= 62.60'	T= 54.70'	T= 74.06'	T= 22.07'	T= 45.30'

47/42/9

0214-325 35
119