

PLAT OF EASTPOINTE BOULEVARD

(A PLANNED UNIT DEVELOPMENT)

IN SECTION 27 AND 34, TOWNSHIP 41 SOUTH, RANGE 42 EAST
PALM BEACH COUNTY, FLORIDA

IN 2 SHEETS SHEET NO. 2

134

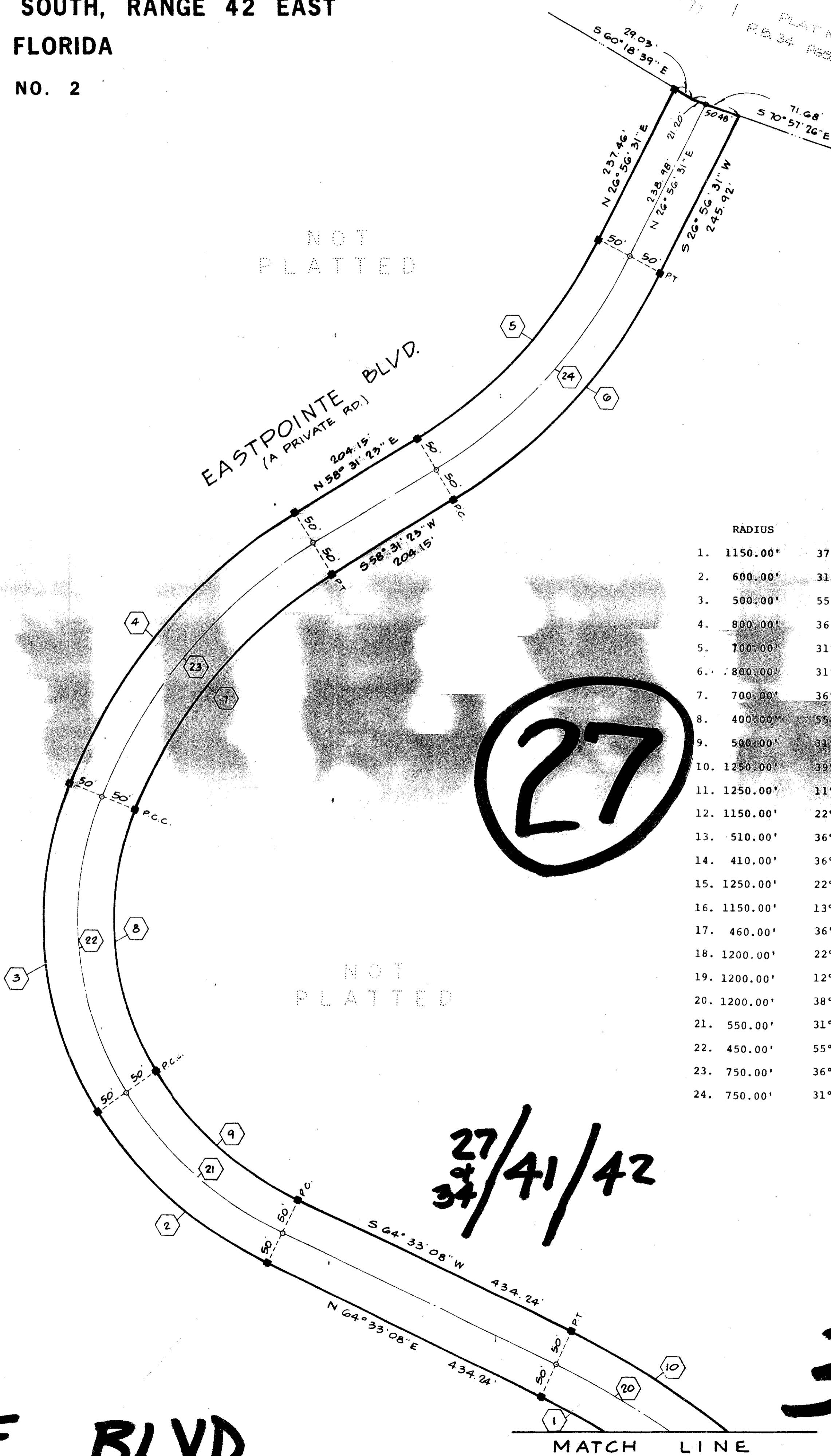
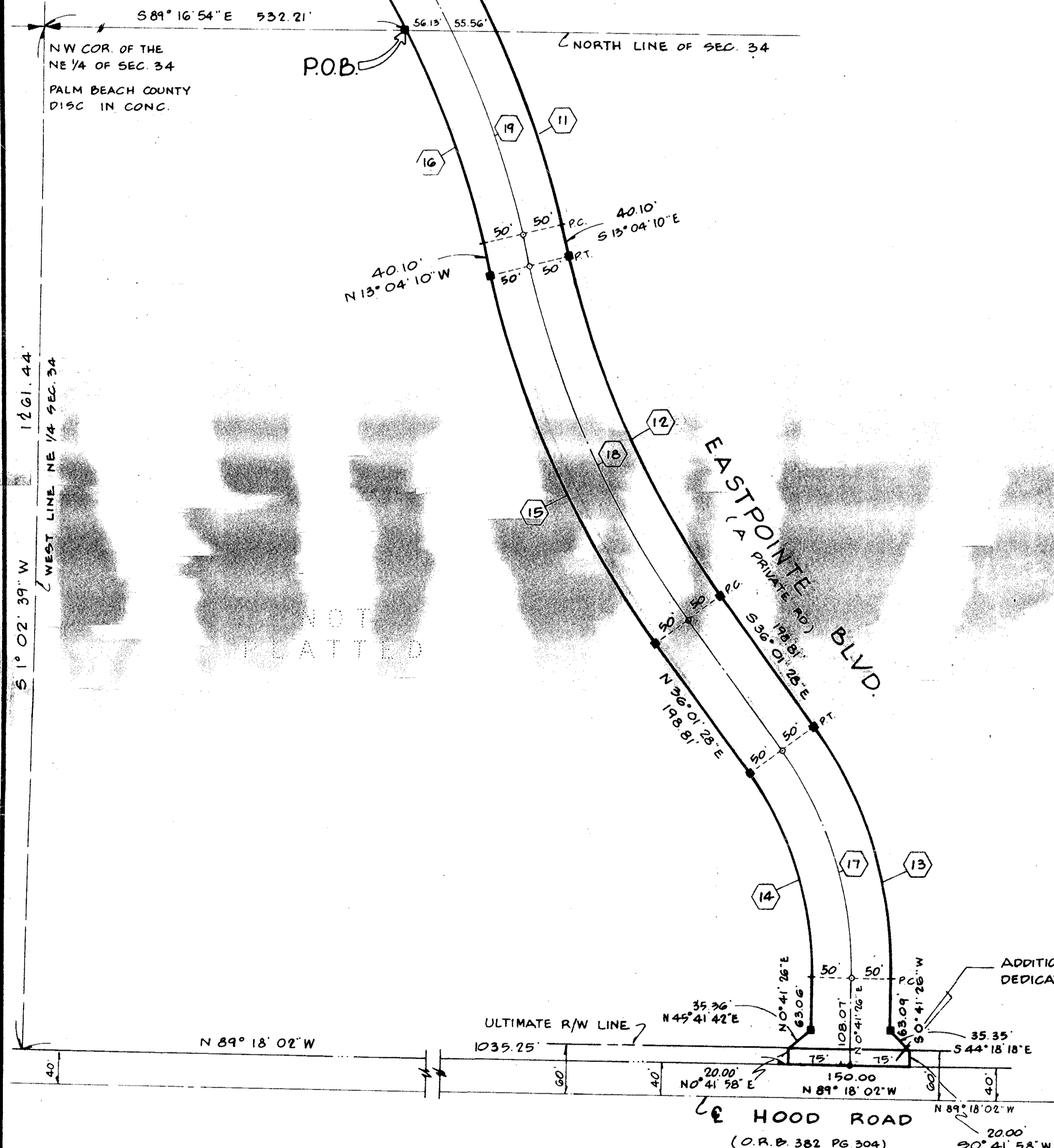
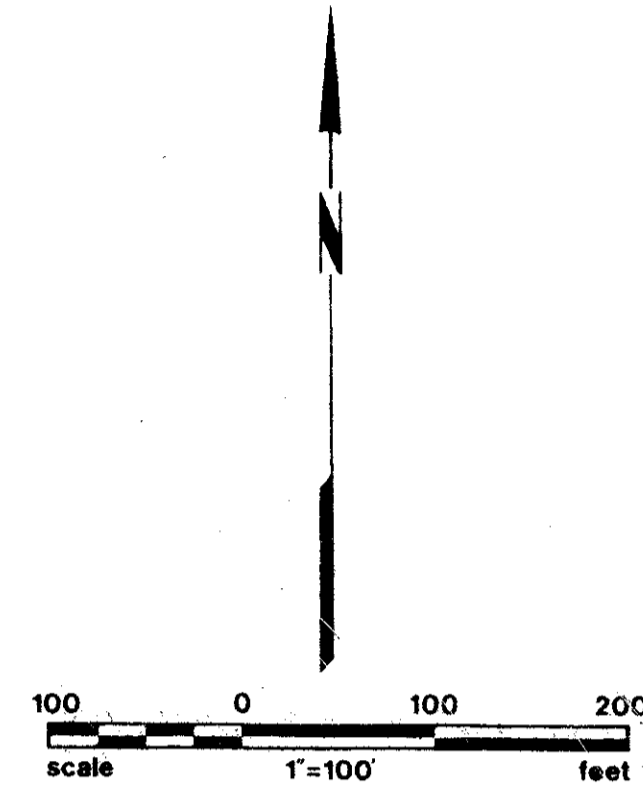
STATE OF FLORIDA
COUNTY OF PALM BEACH
This Plat was filed for record at
this day of _____, 1978,
and duly recorded in Plat Book No.
on page _____
JOHN B DUNKLE Clerk Circuit Court
By _____ D C

MATCH LINE

NOT PLATTED

NOT PLATTED

NOT PLATTED



CURVE DATA TABLE

RADIUS	Δ	ARC	TANGENT
1. 1150.00'	37°-36'-33"	754.87'	391.59'
2. 600.00'	31°-33'-11"	330.42'	169.52'
3. 500.00'	55°-23'-09"	483.33'	262.43'
4. 800.00'	36°-08'-11"	504.56'	261.00'
5. 700.00'	31°-34'-52"	385.84'	197.96'
6. 800.00'	31°-34'-52"	440.96'	226.23'
7. 700.00'	36°-08'-11"	441.49'	228.37'
8. 400.00'	55°-23'-09"	386.67'	209.94'
9. 500.00'	31°-33'-11"	275.35'	141.26'
10. 1250.00'	39°-59'-12"	872.37'	454.80'
11. 1250.00'	11°-29'-46"	250.81'	125.83'
12. 1150.00'	22°-57'-18"	460.74'	233.50'
13. 510.00'	36°-42'-54"	326.81'	169.23'
14. 410.00'	36°-42'-54"	262.73'	136.05'
15. 1250.00'	22°-57'-18"	500.80'	253.80'
16. 1150.00'	13°-52'-25"	278.46'	139.91'
17. 460.00'	36°-42'-54"	294.77'	152.64'
18. 1200.00'	22°-57'-18"	480.77'	243.65'
19. 1200.00'	12°-37'-45"	263.97'	132.79'
20. 1200.00'	38°-51'-13"	798.25'	423.22'
21. 550.00'	31°-33'-11"	302.89'	155.39'
22. 450.00'	55°-23'-09"	435.00'	236.18'
23. 750.00'	36°-08'-11"	473.02'	244.68'
24. 750.00'	31°-34'-52"	413.40'	212.10'

27

27/41/42

35/134

NOTES:
 ■ = PERMANENT REFERENCE MONUMENT
 ○ = PERMANENT CONTROL POINT
 BEARING REFERENCE: PLAT N° 4 EASTPOINTE COUNTRY CLUB P.B. 34 PGS 73-77.
 TOTAL AREA - 10.834 ACRES
 NUMBER OF UNITS - 0
 DENSITY - 0

EASTPOINTE BLVD.

MATCH LINE