

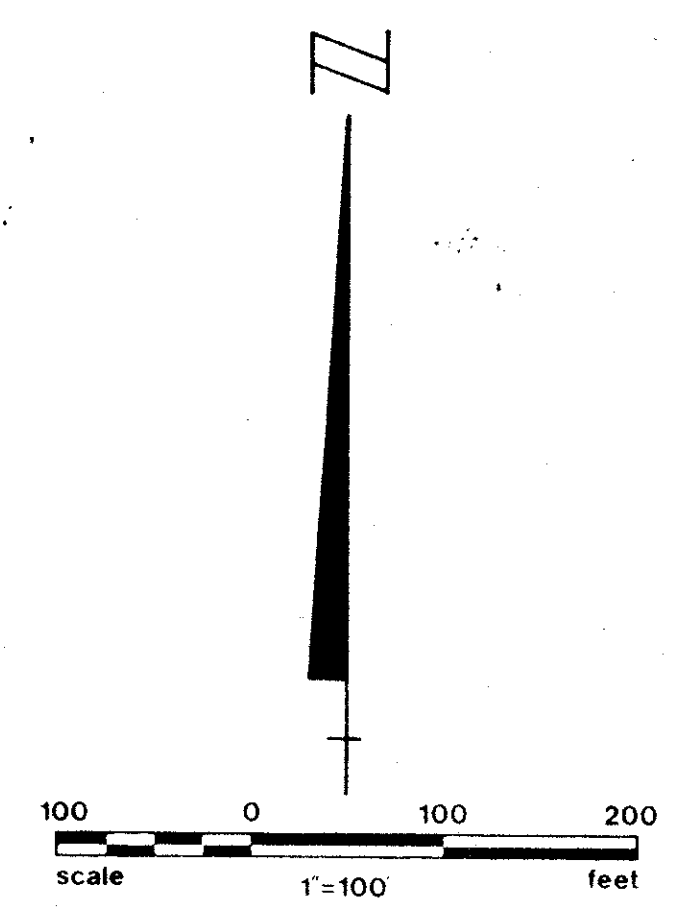
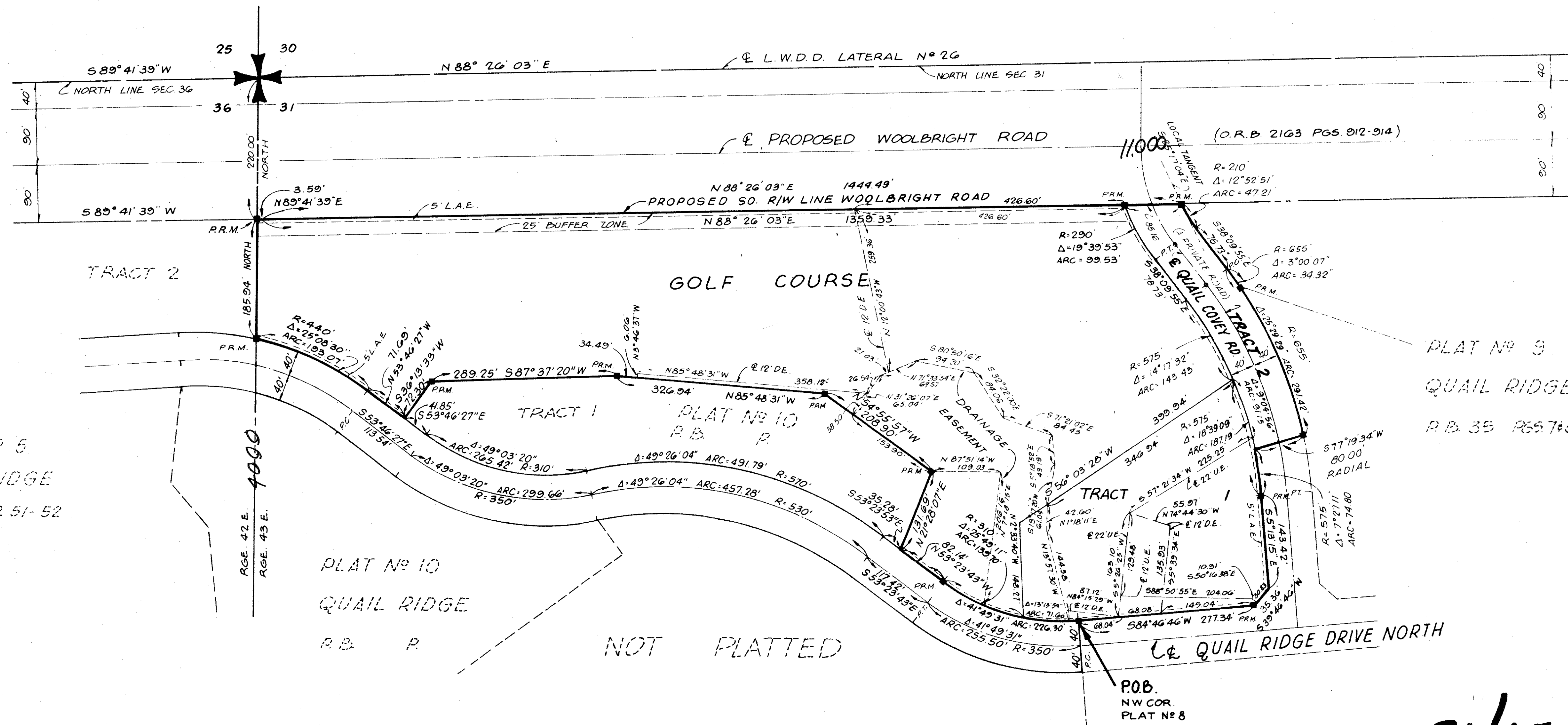
PLAT NO. 11 QUAIL RIDGE

(A PLANNED UNIT DEVELOPMENT)

BEING A SUBDIVISION OF A PORTION OF THE NORTHWEST ONE-QUARTER
OF SECTION 31, TOWNSHIP 45 SOUTH, RANGE 43 EAST
PALM BEACH COUNTY, FLORIDA

IN 2 SHEETS SHEET NO. 2

STATE OF FLORIDA
COUNTY OF PALM BEACH
This Plat was filed for record on this _____ day of _____, 1978,
and duly recorded in Plat Book No. _____ on page _____
By JOHN B. DUNKLE, Clerk Circuit Court
D.C.



- NOTES:
- = PERMANENT REFERENCE MONUMENT (P.R.M.)
 - = PERMANENT CONTROL POINT (P.C.P.)
 - D.E. = DRAINAGE EASEMENT
 - U.E. = UTILITY EASEMENT
 - L.A.E. = LIMITED ACCESS EASEMENT
- MINIMUM SETBACK REQUIREMENTS:
- | | |
|-----------------|---------|
| FRONT | 25 FEET |
| SIDE (interior) | 15 FEET |
| SIDE (corner) | 25 FEET |
| REAR | 25 FEET |
- AREA TRACT 1 = 2.264 ACRES
 AREA TRACT 2 = 0.792 ACRES
 AREA GOLF COURSE = 10.974 ACRES
 TOTAL AREA = 14.030 ACRES
 TOTAL DWELLING UNITS = 16
 DENSITY = 1.14 D.U. PER GROSS ACRE

20

PLAT No 5
QUAIL RIDGE
R.B. 32 P. 51-52

PLAT No 10
QUAIL RIDGE
R.B. P.

NOT PLATTED

PLAT No 8
QUAIL RIDGE
R.B. 35 P. 65-68

31/45/43
PLAT No 8
QUAIL RIDGE
R.B. 33 P. 60-61

QUAIL RIDGE #11

1000-690
35/152