

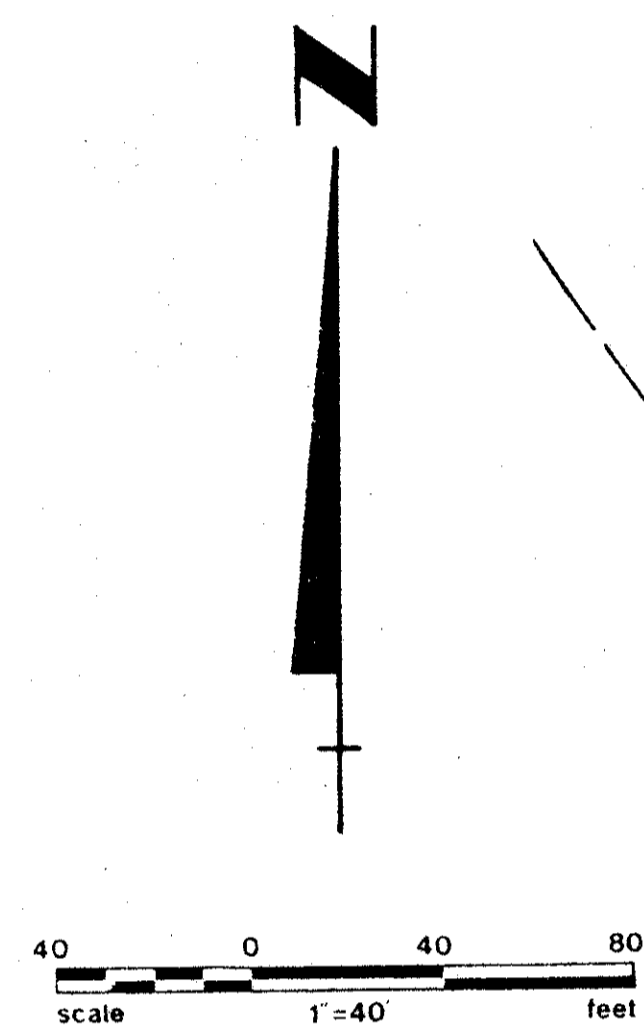
PLAT NO. 6 EASTPOINTE COUNTRY CLUB

(A PLANNED UNIT DEVELOPMENT)

BEING A SUBDIVISION OF A PORTION OF THE SE 1/4 OF SECTION 27 AND
A PORTION OF THE NE 1/4 OF SECTION 34, TOWNSHIP 41 SOUTH, RANGE 42 EAST
PALM BEACH COUNTY, FLORIDA

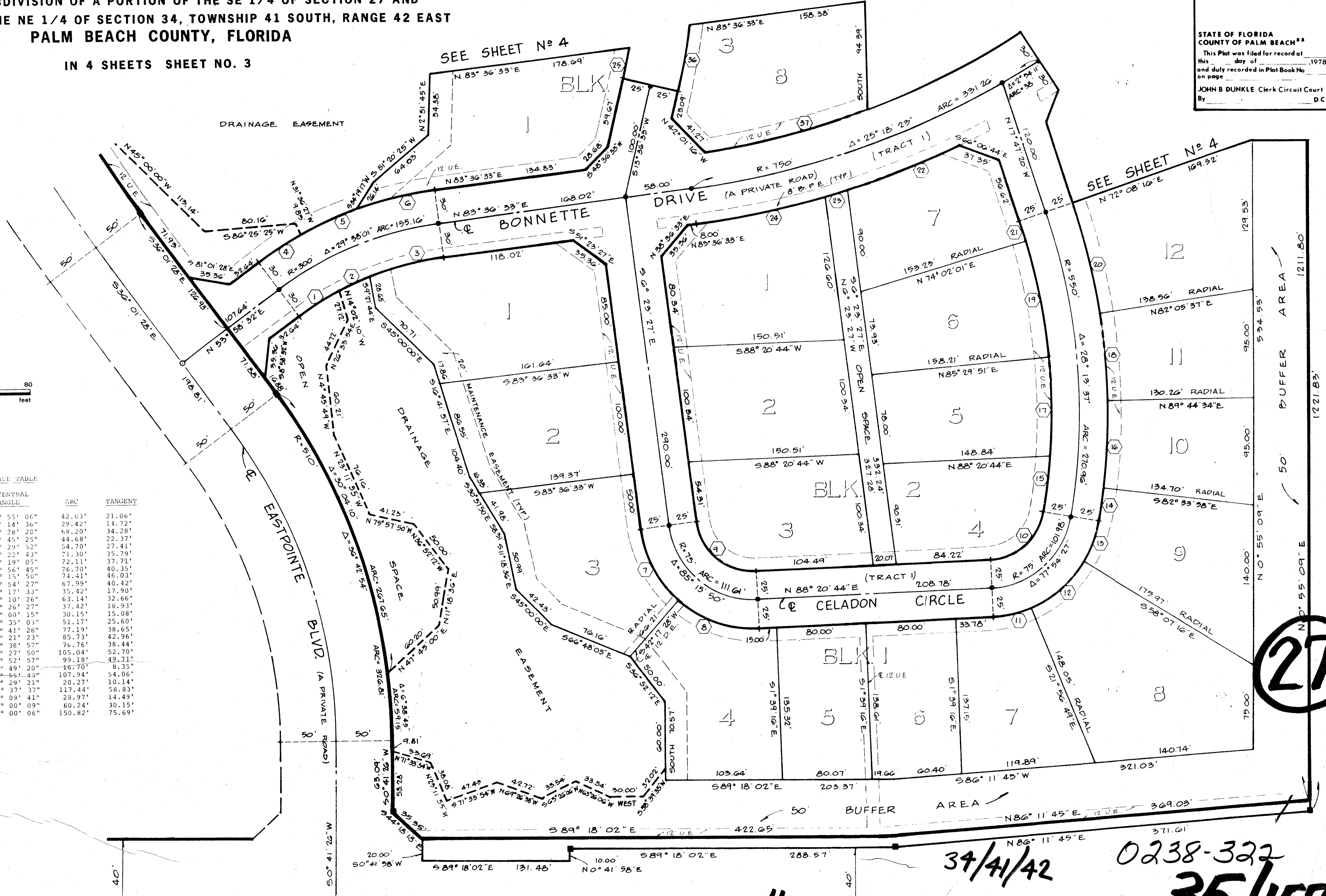
IN 4 SHEETS SHEET NO. 3

STATE OF FLORIDA
COUNTY OF PALM BEACH
This Plat was filed for record at
this day of 1978,
and duly recorded in Plat Book No.
on page
JOHN B. DUNKLE, Clerk Circuit Court
By _____ DC



CURVE TABLE

NO.	RADIUS	CENTRAL ANGLE	ARC	TANGENT
1.	270'	8° 55' 06"	42.03'	21.06'
2.	270'	6° 14' 36"	29.42'	14.72'
3.	270'	14° 28' 20"	68.20'	34.28'
4.	330'	7° 45' 25"	44.68'	22.37'
5.	330'	9° 29' 52"	54.70'	27.41'
6.	330'	12° 22' 43"	71.30'	35.79'
7.	100'	41° 19' 05"	72.11'	37.71'
8.	100'	43° 56' 45"	76.70'	40.35'
9.	50'	85° 15' 50"	74.41'	46.03'
10.	50'	77° 54' 27"	67.99'	40.42'
11.	100'	20° 17' 33"	35.42'	17.90'
12.	100'	36° 10' 26"	63.14'	32.66'
13.	100'	21° 26' 27"	37.42'	18.93'
14.	575'	3° 00' 15"	30.15'	15.08'
15.	575'	5° 35' 03"	51.17'	25.60'
16.	575'	7° 41' 28"	77.19'	38.65'
17.	575'	9° 21' 23"	85.73'	42.96'
18.	575'	7° 38' 57"	76.76'	38.44'
19.	525'	11° 27' 50"	105.04'	52.70'
20.	575'	9° 52' 57"	99.18'	49.71'
21.	525'	1° 49' 20"	16.70'	8.35'
22.	780'	7° 55' 43"	107.94'	54.06'
23.	780'	1° 29' 21"	20.27'	10.14'
24.	780'	8° 37' 37"	117.44'	58.83'
25.	525'	3° 09' 41"	29.97'	14.49'
26.	575'	6° 00' 09"	60.24'	30.15'
27.	720'	12° 00' 06"	150.82'	75.69'



EASTPOINTE - #6

39/41/42
0238-322
35/157