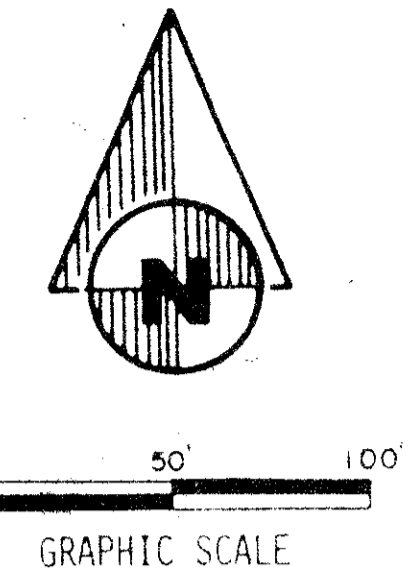


A PART OF A P.U.D.
MIRROR LAKES
PLAT NO. 1

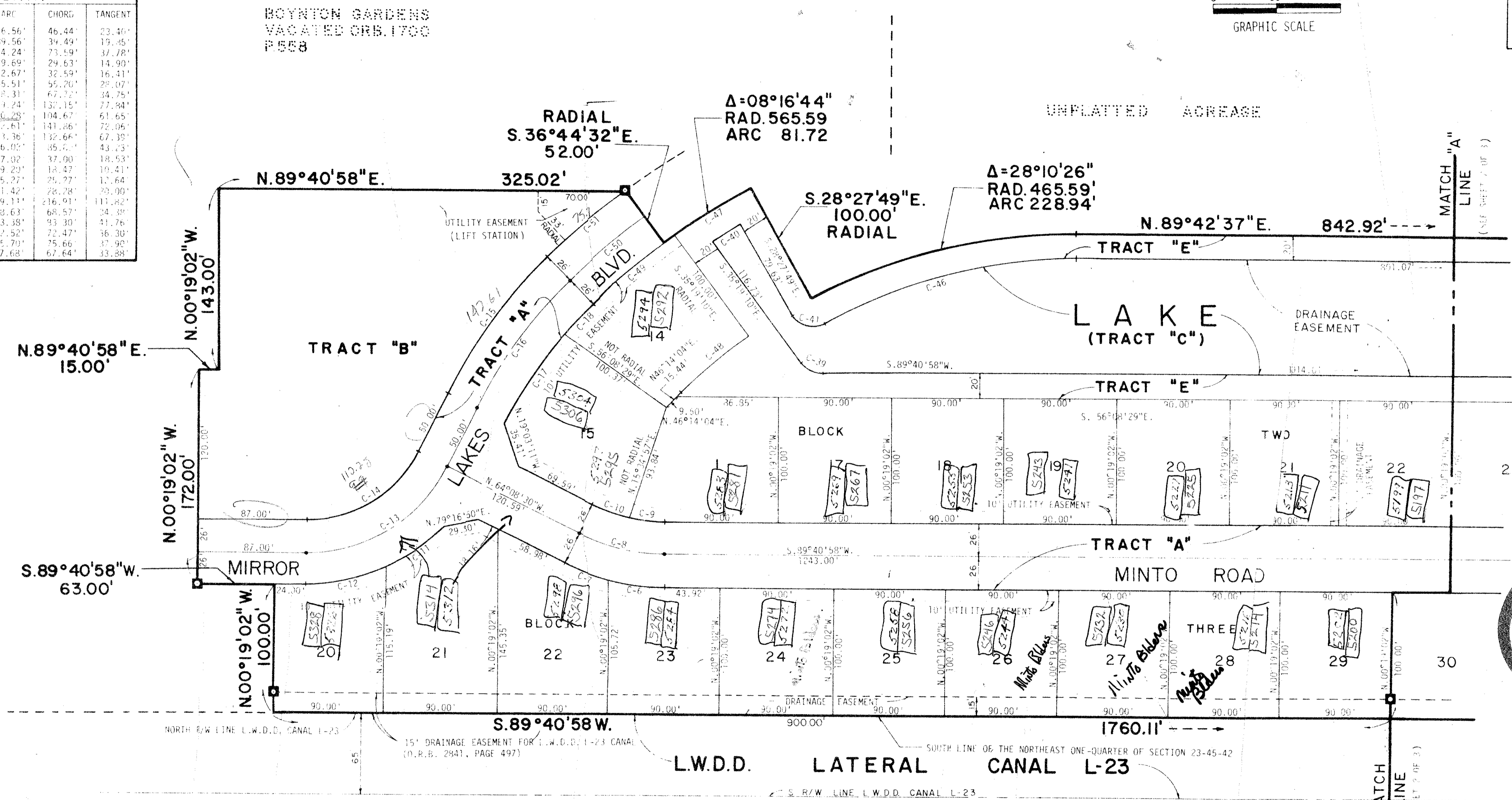
LYING IN THE SOUTH ONE-HALF OF THE NORTHEAST ONE-QUARTER OF SECTION 23,
 TOWNSHIP 45 SOUTH, RANGE 42 EAST, PALM BEACH COUNTY, FLORIDA, AND BEING
 A REPLAT OF A PORTION OF PREVIOUSLY PLATTED LOTS 25 THROUGH 28 AND
 35 THROUGH 38, INCLUSIVE, BOYNTON GARDENS, (AS RECORDED IN PLAT BOOK 6,
 PAGE 32 AND VACATED IN OFFICIAL RECORD BOOK 1700, PAGE 558).

SHEET 3 OF 3

STATE OF FLORIDA
 COUNTY OF PALM BEACH
 THIS PLAT WAS PREPARED
 RECORD AT
 THIS
 A.D., 1972, AND IS
 RECORDED IN PLAT BOOK
 ON PAGES
 JOHN B. DUNN
 CIRCUIT COURT
 BY



C. NO.	CENT. ANG.	RADIUS	ARC	CHORD	TANGENT
C-6	147°04'03"	183.50'	46.56'	46.44'	23.40'
C-7	127°03'33"	138.50'	34.56'	34.49'	19.45'
C-8	67°10'33"	162.50'	74.24'	73.19'	37.78'
C-9	172°27'44"	136.50'	29.69'	29.63'	14.99'
C-10	137°44'48"	136.50'	32.67'	32.59'	16.41'
C-11	179°31'42"	151.00'	55.51'	55.20'	28.07'
C-12	67°55'05"	151.00'	68.31'	67.32'	34.75'
C-13	67°49'07"	125.00'	114.24'	132.15'	77.94'
C-14	63°49'27"	79.00'	116.28'	194.67'	61.65'
C-15	207°27'34"	488.00'	147.61'	141.86'	72.06'
C-16	207°27'34"	375.00'	131.36'	132.66'	67.39'
C-17	147°03'19"	315.00'	86.05'	85.71'	43.23'
C-18	67°04'09"	494.00'	37.02'	37.00'	18.53'
C-19	64°44'53"	20.00'	19.20'	18.47'	10.41'
C-20	62°39'15"	545.00'	545.00'	75.27'	11.64'
C-21	93°58'00"	20.00'	31.42'	28.78'	23.00'
C-22	29°35'05"	444.69'	219.11'	216.91'	111.42'
C-23	88°14'46"	365.53'	95.63'	68.52'	34.35'
C-24	98°26'46"	965.53'	93.38'	93.30'	31.76'
C-25	67°01'24"	651.53'	72.52'	72.47'	36.30'
C-26	67°01'24"	612.49'	75.79'	75.66'	37.90'
C-27	167°51'21"	365.54'	67.68'	67.64'	33.88'



BOYNTON GARDENS
 VACATED ORB 1700
 P 558

BOYNTON GARDENS
 (BRG, PP 32)

35

23/45/42

1000-131

MIRROR LAKES #1

35/167