

EASTWOOD NO.3 OF WELLINGTON

P.U.D.

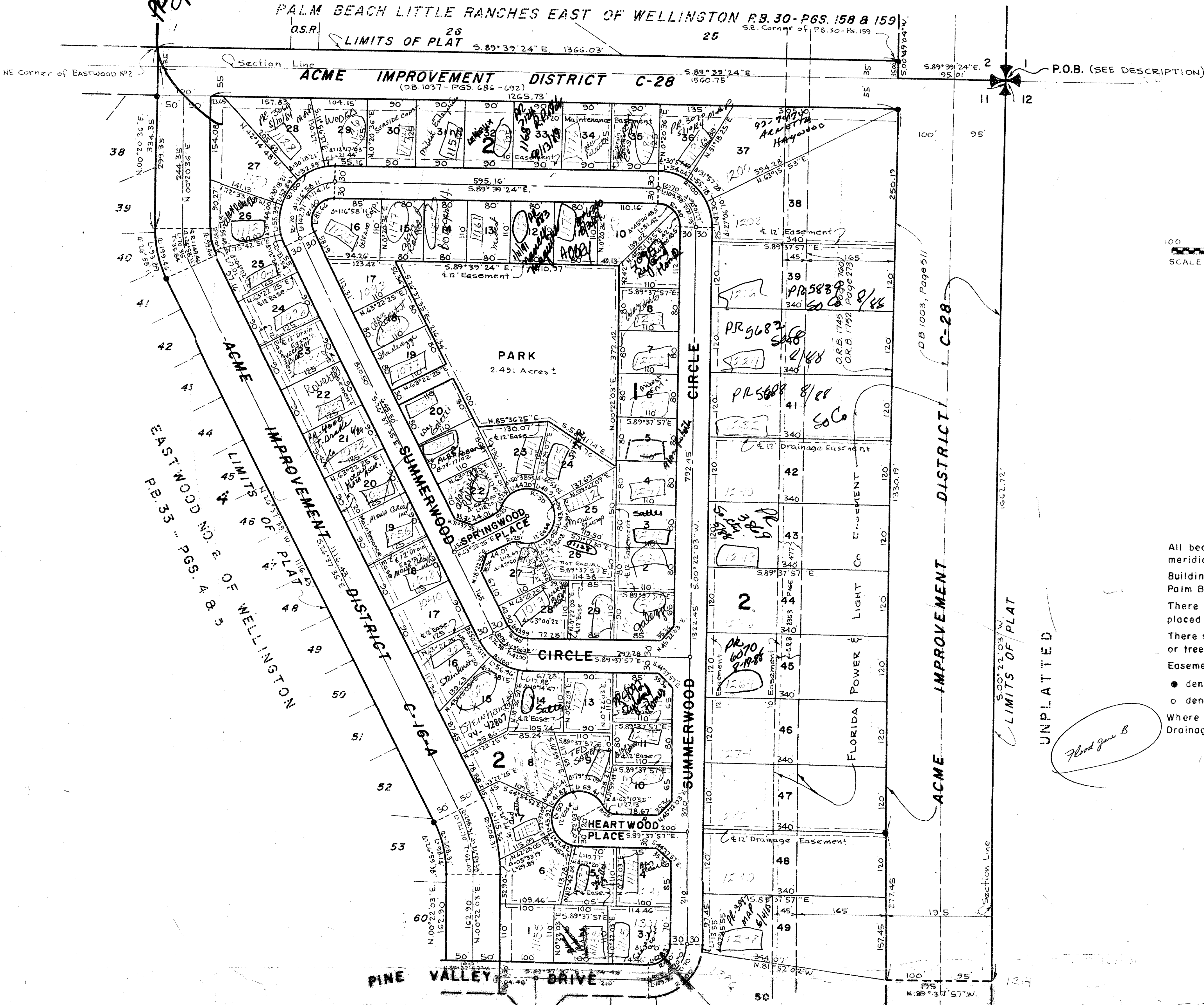
IN PART OF SECTIONS 2 & 11, TWP. 44 S., RGE. 41 E.

PALM BEACH COUNTY, FLORIDA
IN 4 SHEETS SHEET NO. 2

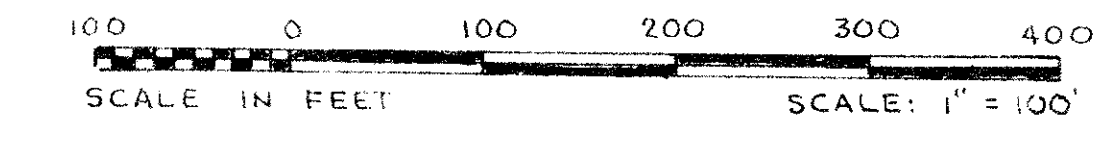
GEE & JENSON
ENGINEERS-ARCHITECTS-PLANNERS, INC.
WEST PALM BEACH, FLORIDA
SEPTEMBER 1977

169

PALM BEACH LITTLE RANCHES EAST OF WELLINGTON P.B. 30 - PGS. 158 & 159



Pr 22419 Johnson P. 13-80



STATE OF FLORIDA
COUNTY OF PALM BEACH
This Plat was filed for record at _____ M.
this _____ day of _____, 1978,
and duly recorded in Plat Book No. _____
on page _____
JOHN B. DUNKLE, Clerk Circuit Court
By _____, D.C.

NOTES

- All bearings shown hereon are relative to an assumed meridian used throughout Wellington.
- Building Setback Lines shall be as required by Palm Beach County Zoning Regulations.
- There shall be no buildings or other structures placed on Utility Easements.
- There shall be no buildings or any kind of construction or trees or shrubs placed on Drainage Easements.
- Easements are for Public Utilities, unless otherwise noted.
- denotes Permanent Reference Monument.
- denotes Permanent Control Point.
- Where Utility Easements and Drainage Easements cross, Drainage Easements shall take precedent.

62

241/44/41

TURNOUT REQUIRED

0332-015

35/169