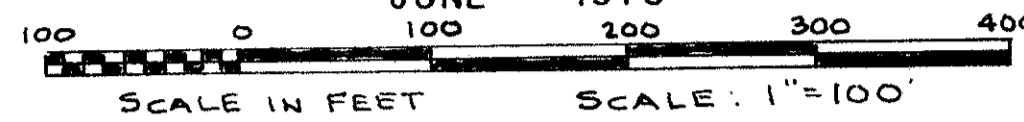


GOLF AND TENNIS VILLAGE - PHASE I, OF PALM BEACH POLO AND COUNTRY CLUB WELLINGTON - P.U.D.

IN PART OF SECTION 14, TWP. 44 S., RGE. 41 E.
PALM BEACH COUNTY, FLORIDA

IN 2 SHEETS SHEET NO. 2

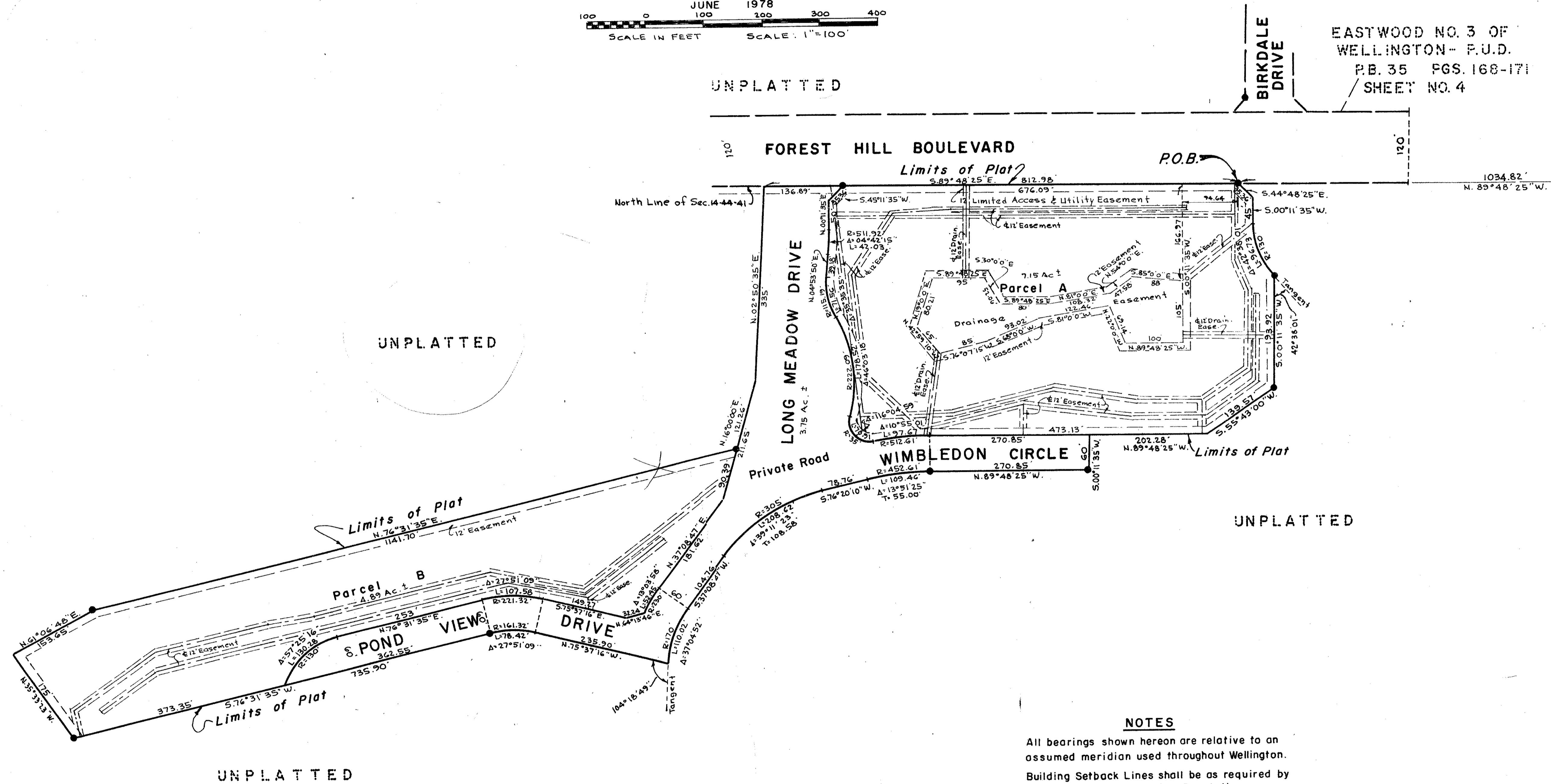
GEE & JENSON
ENGINEERS-ARCHITECTS-PLANNERS, INC.
WEST PALM BEACH, FLORIDA
JUNE 1978



186

STATE OF FLORIDA
COUNTY OF PALM BEACH
This Plat was filed for record at _____ M.
this _____ day of _____, 1978
and duly recorded in Plat Book No. _____
on page _____
JOHN B. DUNKLE, Clerk Circuit Court
By _____, D.C.

EASTWOOD NO. 3 OF
WELLINGTON - P.U.D.
P.B. 35 PGS. 168-171
SHEET NO. 4



NOTES

- All bearings shown hereon are relative to an assumed meridian used throughout Wellington.
- Building Setback Lines shall be as required by Palm Beach County Zoning Regulations.
- There shall be no buildings or other structures placed on Utility Easements.
- There shall be no buildings or any kind of construction or trees or shrubs placed on Drainage Easements.
- Easements are for Public Utilities, unless otherwise noted.
- denotes Permanent Reference Monument.
- Parcels A and B are for Condominium use, the Buildings not located. Areas in Parcels A and B not used for Buildings will be used for utilities, drainage, access, parking, and other common purposes and are not the maintenance obligation of Palm Beach County, Florida.

14/44/41

332-054

35/186

GOLF & TENNIS VILL. - WELLINGTON