

PHEASANT WALK SECTION SIX

A PARCEL OF LAND IN THE EAST ONE-HALF OF SECTION 36, TOWNSHIP 46 SOUTH, RANGE 42 EAST, PALM BEACH COUNTY, FLORIDA

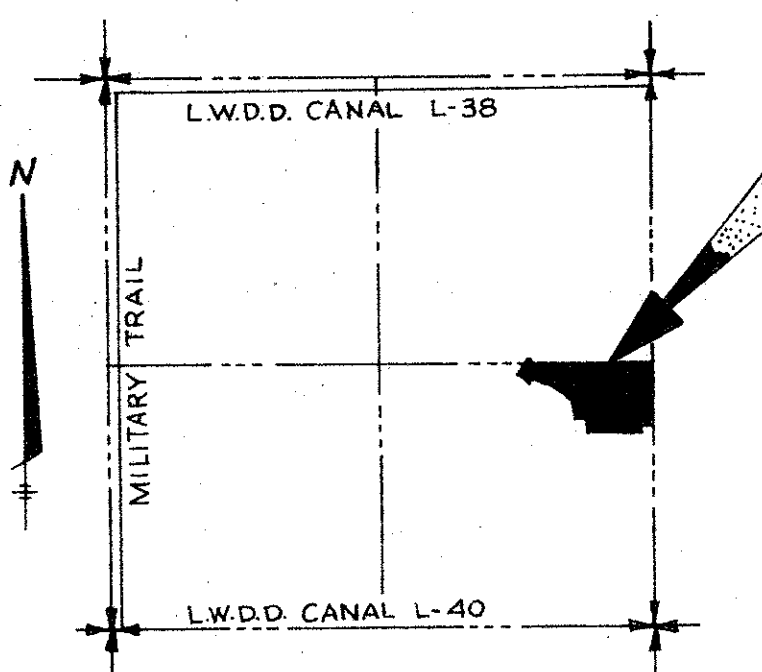
194

State of Florida
County of Palm Beach
This Plat Was Filed For
Record At _____ On The
_____ Day Of _____
1978 And Duly Recorded
In Plat Book _____ Page

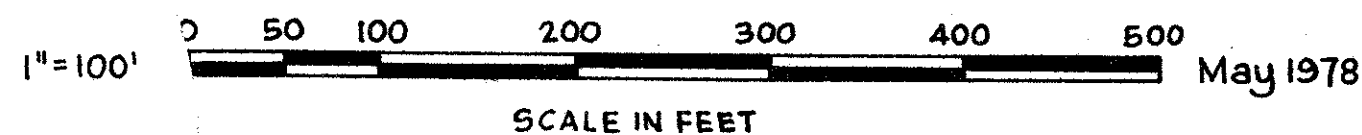
John B. Dunkle
Clerk Of Circuit Court

By: _____

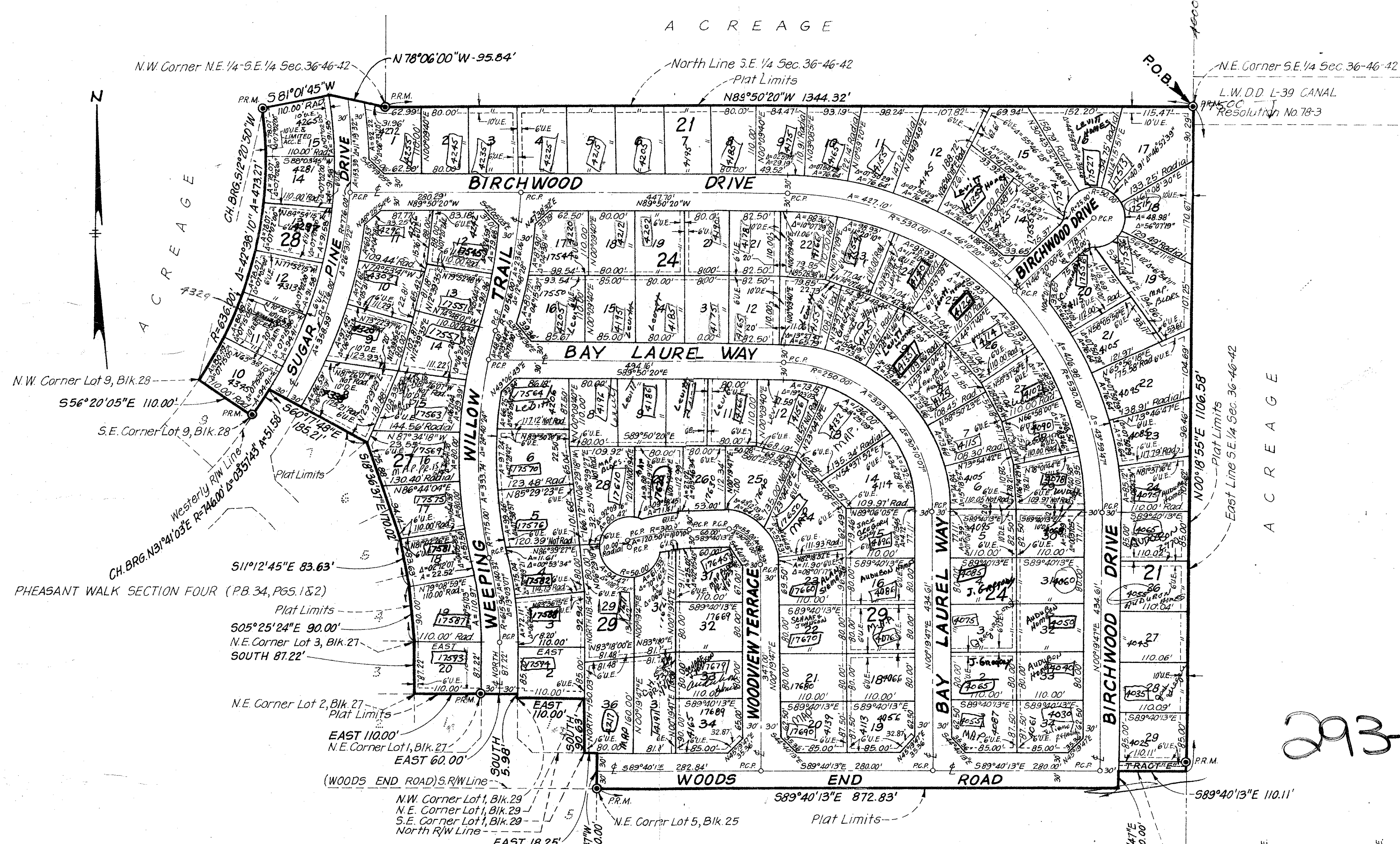
Prepared By: T.D. BICKHAM in the offices
of ARTHUR V. STROCK & ASSOCIATES, INC.
Consulting Engineers - Land Surveyors
Deerfield Beach - Delray Beach, Florida
Comm. No. 485322 F.B.



LOCATION SKETCH
SEC. 36, TWP 46 S, RGE 42 E.
NOT TO SCALE



SHEET TWO OF TWO



37

36/46/42

293-307

SURVEYOR'S NOTES

1. P.R.M. Indicates Permanent Reference Monument
2. P.C.P. Indicates Permanent Control Point
3. U.E. Indicates Utility Easement
4. D.E. Indicates Drainage Easement
5. A Bearing of North was assumed for the West Line of Section 36-46-42
6. No building or any kind of construction or trees shall be placed on easements.
7. Finish floor elevations shall be a minimum of 18 inches above crown of road or a minimum of 16.0 NGVD, whichever is higher.
8. A combined 10 feet wide Utility and Limited Access Easement exists along the rear of Lots 10 thru 15, Incl., Blk. 28 as shown hereon.

SIDEWALK
Turnout

Flood Hazard
Split Call Ed per lot

PHEASANT WALK - #6

35/194