

PLAT NO. 7 EASTPOINTE COUNTRY CLUB

(A PLANNED UNIT DEVELOPMENT)
IN SECTION 27, TOWNSHIP 41 SOUTH, RANGE 42 EAST
PALM BEACH COUNTY, FLORIDA

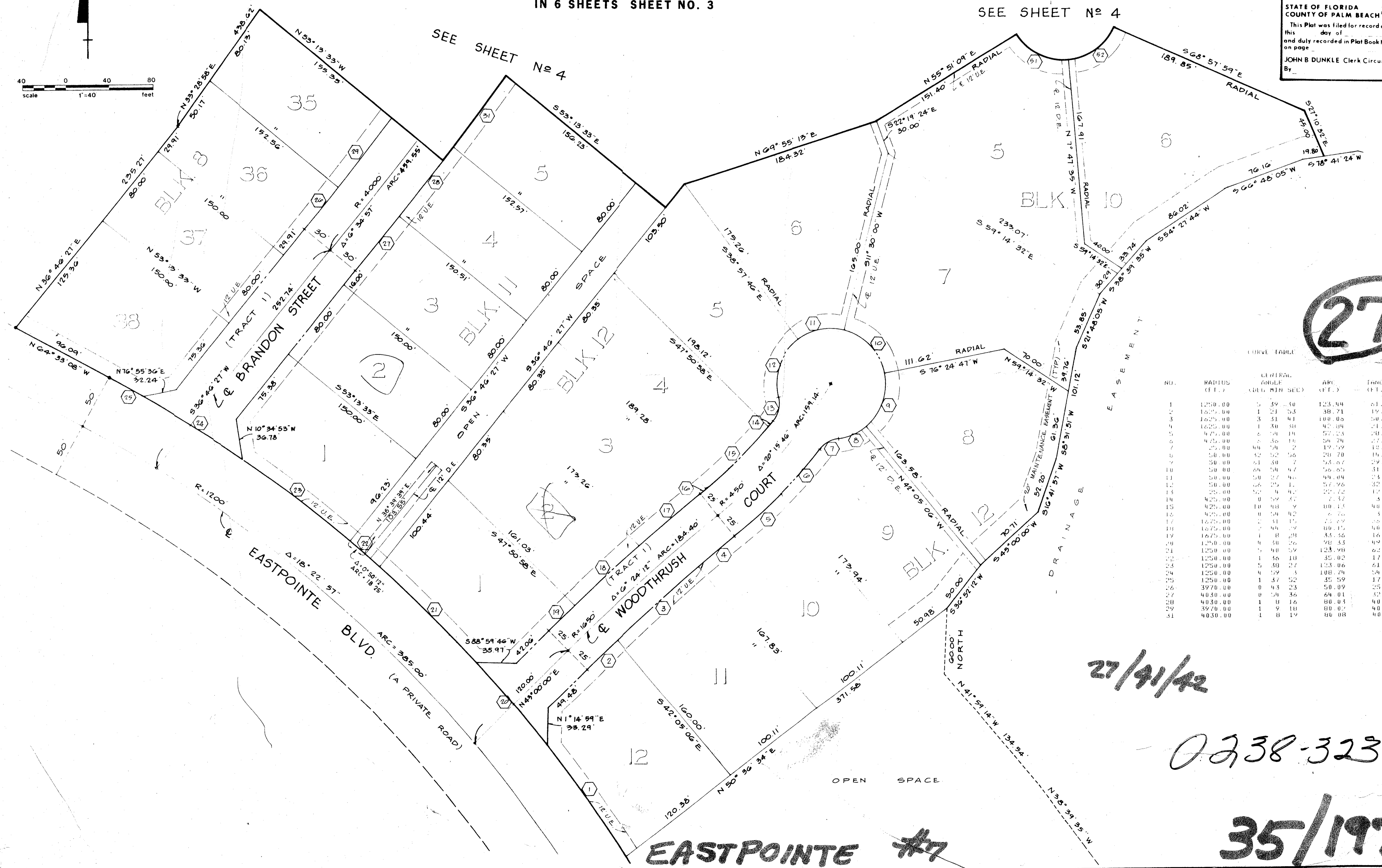
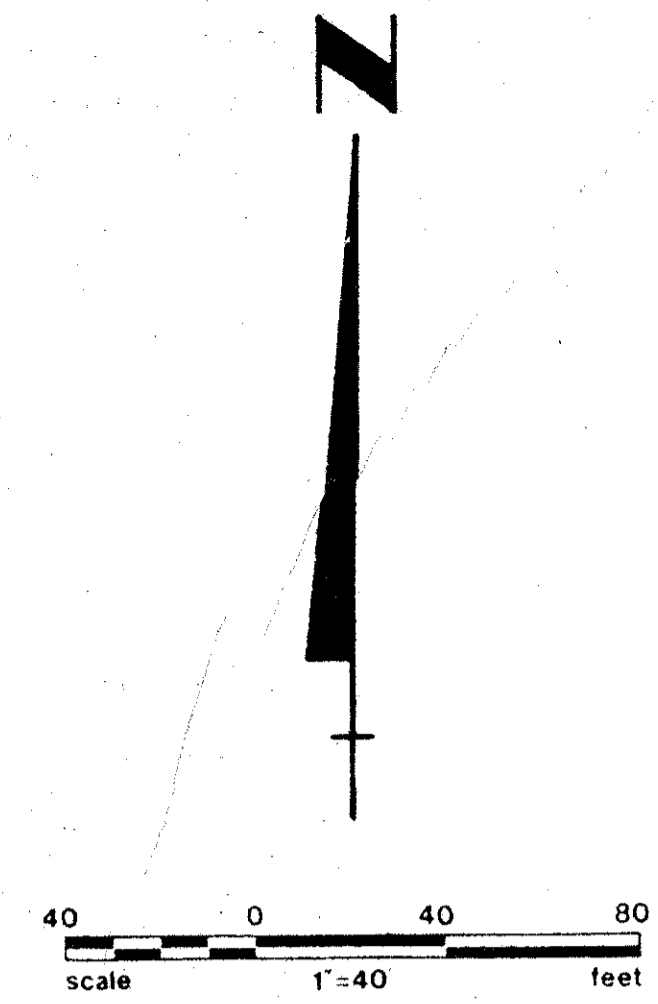
IN 6 SHEETS SHEET NO. 3

197

STATE OF FLORIDA
COUNTY OF PALM BEACH
This Plat was filed for record at
this day of _____ 1978.
and duly recorded in Plat Book No.
on page _____
JOHN B. DUNKLE Clerk Circuit Court
By _____ DC

SEE SHEET No 4

SEE SHEET No 4



CURVE TABLE

NO.	RADIUS (FT.)	CENTRAL ANGLE (DEG. MIN. SEC.)	ARC (FT.)	TANGENT (FT.)
1	1250.00	5 39 50	123.94	61.77
2	1500.00	1 23 53	58.71	19.55
3	1625.00	3 31 41	100.05	50.05
4	1625.00	1 30 33	42.34	21.02
5	425.00	2 58 14	57.23	28.55
6	425.00	2 36 18	54.74	27.00
7	25.00	94 50 2	19.79	12.33
8	50.00	52 52 56	20.70	10.25
9	50.00	51 30 7	53.67	29.25
10	50.00	64 50 47	56.65	31.00
11	50.00	50 27 46	44.04	23.56
12	50.00	58 25 11	57.96	35.75
13	25.00	52 4 42	25.24	12.21
14	425.00	0 59 32	7.37	3.69
15	425.00	10 03 9	40.13	19.10
16	425.00	0 50 42	6.76	3.38
17	1675.00	2 31 15	71.27	35.05
18	1675.00	2 40 29	80.15	40.05
19	1675.00	1 8 28	33.36	16.60
20	1250.00	4 30 26	90.33	49.19
21	1250.00	3 48 39	123.90	62.04
22	1250.00	1 36 10	35.02	17.51
23	1250.00	5 30 27	123.06	61.38
24	1250.00	4 59 3	108.76	54.40
25	1250.00	1 37 52	35.59	17.79
26	3970.00	0 43 23	50.09	25.05
27	4030.00	0 50 36	64.01	32.01
28	4030.00	1 8 16	80.03	40.02
29	3970.00	1 9 10	60.03	30.01
31	4030.00	1 8 19	80.03	40.01

27/91/42

0238-323

35/197

EASTPOINTE #7