

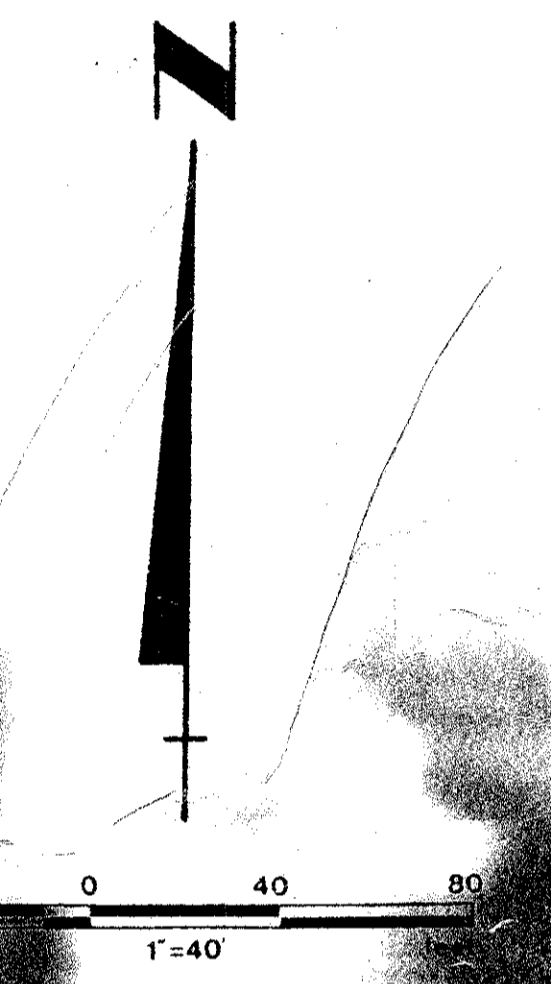
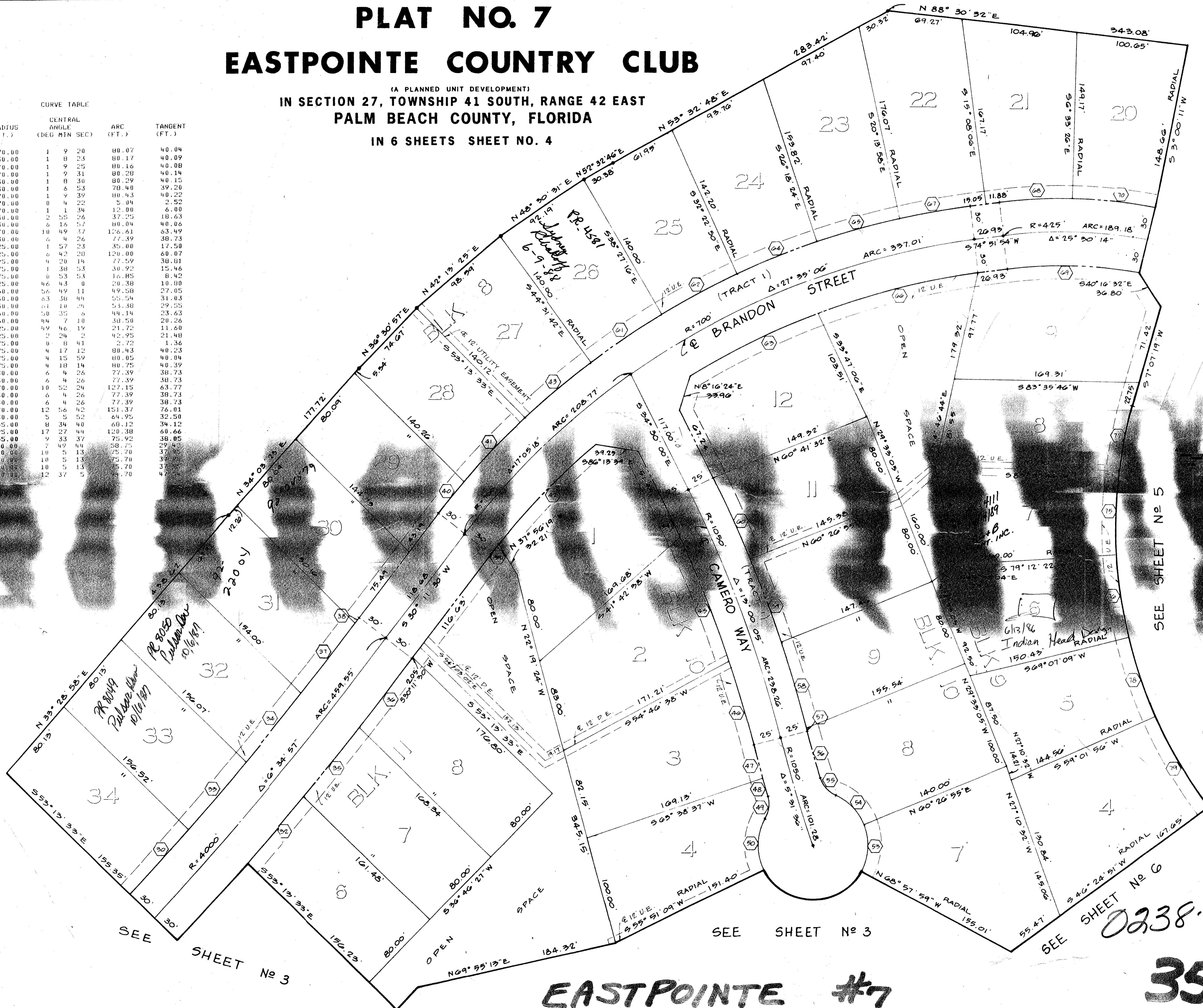
# PLAT NO. 7 EASTPOINTE COUNTRY CLUB

(A PLANNED UNIT DEVELOPMENT)  
IN SECTION 27, TOWNSHIP 41 SOUTH, RANGE 42 EAST  
PALM BEACH COUNTY, FLORIDA  
IN 6 SHEETS SHEET NO. 4

198

STATE OF FLORIDA  
COUNTY OF PALM BEACH  
This Plat was filed for record at  
this day of \_\_\_\_\_, 1978,  
and duly recorded in Plat Book No.  
\_\_\_\_\_ on page  
\_\_\_\_\_  
JOHN B. DUNKLE, Clerk Circuit Court  
By \_\_\_\_\_ D.C.

NO.	RADIUS (FT.)	CENTRAL ANGLE (DEG MIN SEC)	ARC (FT.)	TANGENT (FT.)
30	3970.00	1 9 20	80.07	40.04
32	4030.00	1 8 23	80.17	40.09
33	3970.00	1 9 25	80.16	40.08
34	3970.00	1 9 31	80.28	40.14
35	4030.00	1 8 30	80.29	40.15
36	4030.00	1 6 53	78.40	39.20
37	3970.00	1 9 39	80.43	40.22
38	3970.00	0 4 22	5.04	2.52
39	730.00	1 1 34	12.00	6.00
40	730.00	2 55 06	37.25	18.63
41	730.00	5 16 57	80.04	40.06
42	670.00	10 49 37	126.61	63.49
43	730.00	6 4 26	77.39	38.73
44	1025.00	1 57 23	35.00	17.50
45	1025.00	0 42 28	120.00	60.07
46	1025.00	4 20 14	77.59	38.81
47	1025.00	1 38 53	38.92	19.46
48	1025.00	0 53 53	16.85	8.42
49	25.00	46 43 0	20.38	10.80
50	50.00	56 49 11	49.58	27.05
51	50.00	63 38 44	55.54	31.03
52	50.00	61 10 24	53.38	29.55
53	50.00	50 35 6	44.14	23.63
54	50.00	44 7 10	38.58	20.26
55	25.00	49 46 19	21.72	11.60
56	1025.00	2 24 2	42.95	21.48
57	1025.00	0 8 41	2.72	1.36
58	1025.00	4 17 12	80.43	40.23
59	1025.00	4 15 59	80.05	40.04
60	1025.00	4 18 14	80.75	40.39
61	730.00	6 4 26	77.39	38.73
62	730.00	6 4 26	77.39	38.73
63	670.00	10 52 24	127.15	63.77
64	730.00	6 4 26	77.39	38.73
65	730.00	6 4 26	77.39	38.73
66	670.00	12 56 42	151.37	78.01
67	730.00	5 5 52	64.95	32.50
68	485.00	8 34 40	68.12	34.12
69	395.00	17 27 44	120.38	60.66
70	455.00	9 33 37	75.92	38.05
72	430.00	7 49 44	58.75	29.43
75	430.00	10 5 13	75.70	37.85
76	430.00	10 5 13	75.70	37.85
78	430.00	10 5 13	75.70	37.85
79	430.00	12 37 5	47.74	23.87



27

27/41/42

SEE SHEET No 3

SEE SHEET No 3

SEE SHEET No 6

0238.323

EASTPOINTE #7

35/198