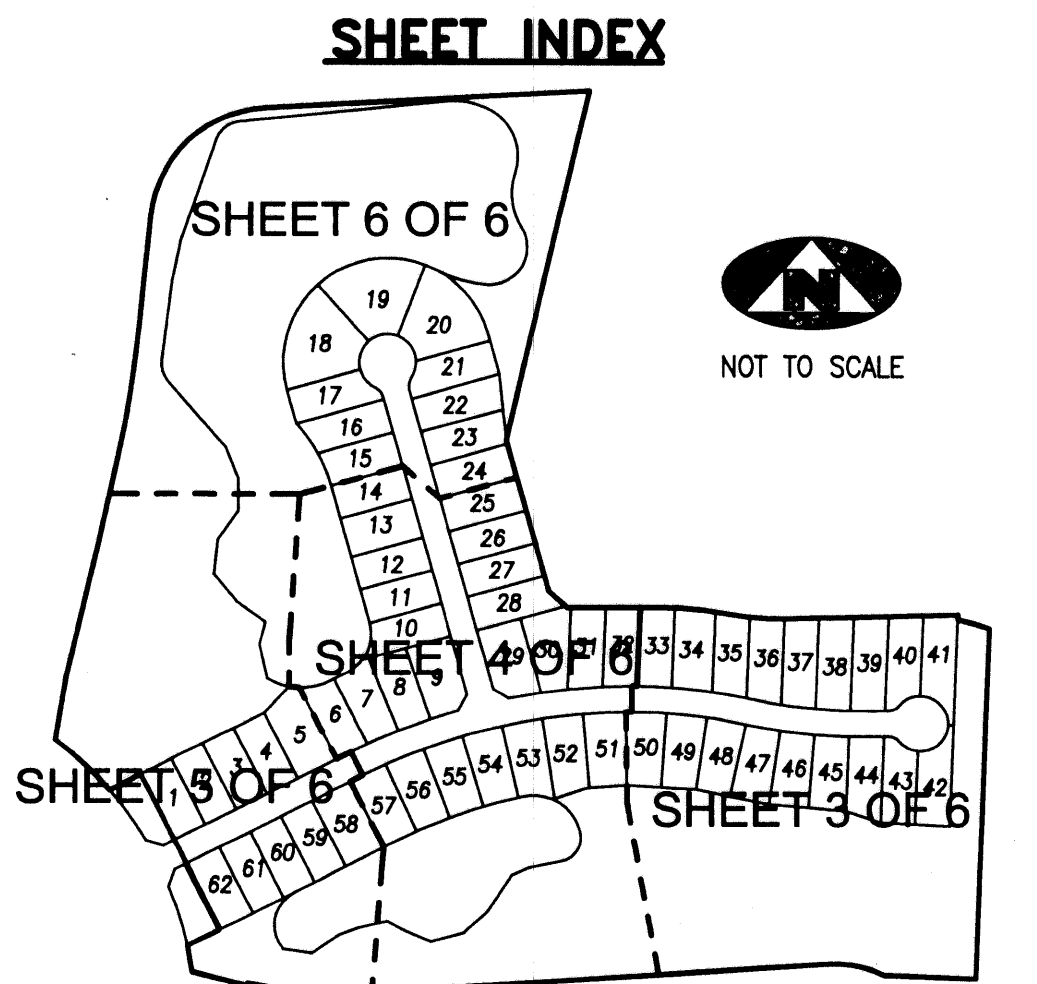
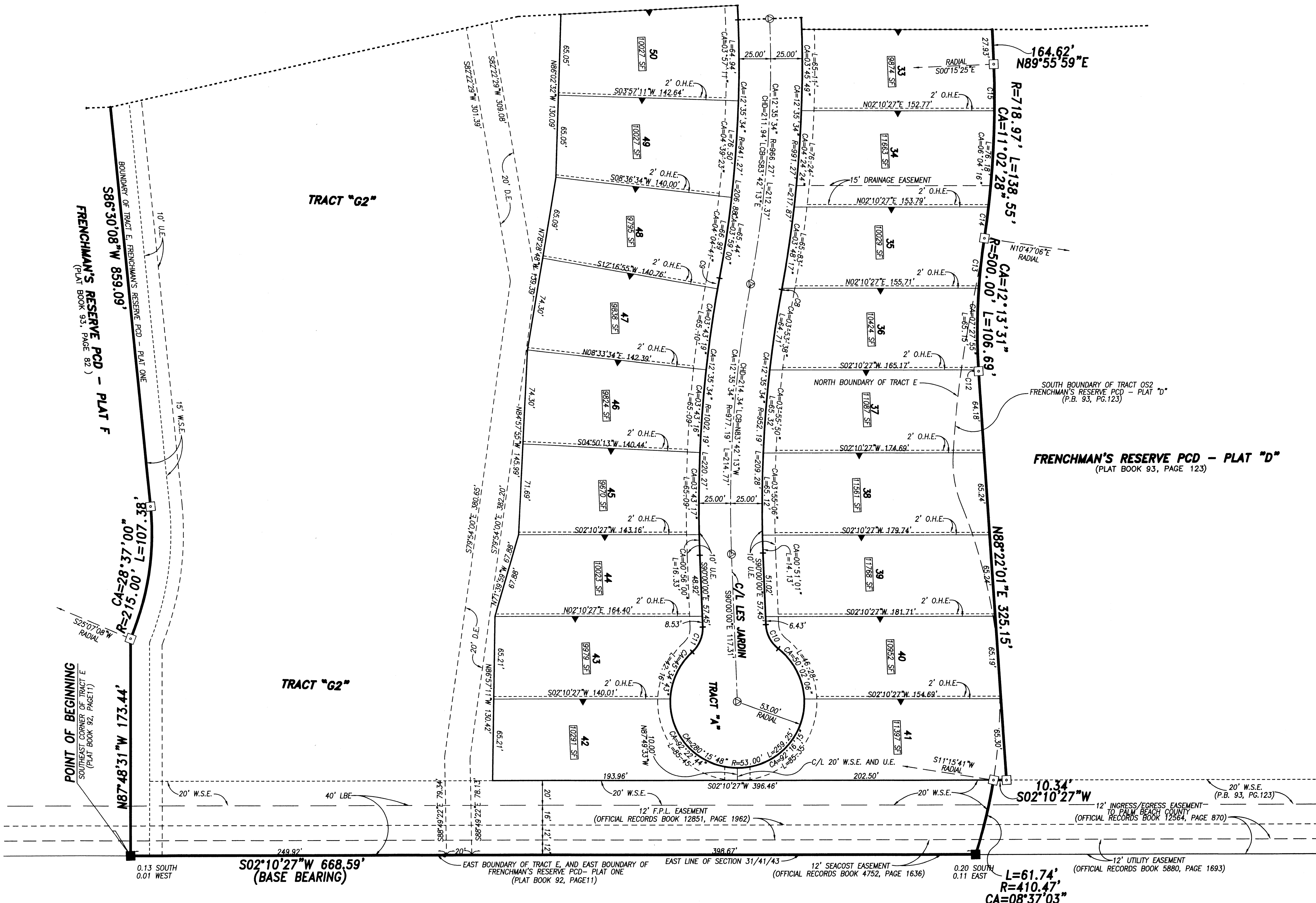


FRENCHMAN'S RESERVE PCD - PLAT E

BEING A REPLAT OF TRACT E, FRENCHMAN'S RESERVE PCD - PLAT ONE, AS RECORDED IN PLAT BOOK 92, PAGE 11, AND BEING A REPLAT OF PORTIONS OF TRACT OS2, FRENCHMAN'S RESERVE PLAT - "D", AS RECORDED IN PLAT BOOK 93, PAGE 123, PUBLIC RECORDS, PALM BEACH COUNTY, FLORIDA, AND LYING IN SECTION 31, TOWNSHIP 41 SOUTH, RANGE 43 EAST, CITY OF PALM BEACH GARDENS, PALM BEACH COUNTY, FLORIDA

CURVE TABLE					
C8	CA=00°03'54"	R=991.27'	L=1.13'	LCB=N77°26'23"W	CHD=1.13'
C9	CA=00°29'41"	R=1002.19'	L=8.65'	LCB=S77°39'17"E	CHD=8.65'
C10	CA=50°07'54"	R=25.00'	L=21.87'	LCB=N64°56'03"E	CHD=21.18'
C11	CA=50°07'54"	R=25.00'	L=21.87'	LCB=N65°56'22"W	CHD=21.70'
C12	CA=00°07'20"	R=500.00'	L=1.07'	LCB=N88°37'15"E	CHD=1.07'
C13	CA=04°38'16"	R=500.00'	L=40.47'	LCB=S81°32'02"E	CHD=40.46'
C14	CA=02°00'04"	R=718.82'	L=25.11'	LCB=N80°12'56"W	CHD=25.10'
C15	CA=02°58'01"	R=718.82'	L=37.22'	LCB=N88°46'20"W	CHD=37.22'

FOR MATCH SEE SHEET 4 OF 6



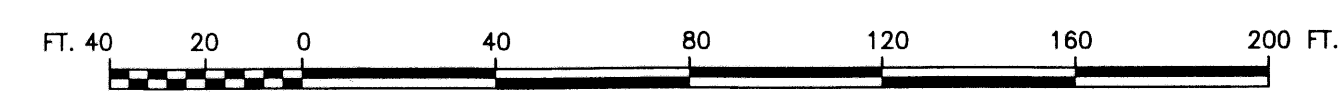
- LEGEND:**
- (R) DENOTES A RADIAL LINE
 - C/L DENOTES A CENTERLINE
 - U.E. DENOTES A UTILITY EASEMENT
 - D.E. DENOTES DRAINAGE EASEMENT
 - O.H.E. DENOTES OVERHANG EASEMENT
 - L.B.E. DENOTES LANDSCAPE BUFFER EASEMENT
 - W.S.E. DENOTES WATER & SEWER EASEMENT
 - R DENOTES RADIUS DISTANCE
 - L DENOTES ARC LENGTH DISTANCE
 - CA DENOTES CENTRAL ANGLE
 - LCB DENOTES LONG CHORD BEARING
 - CHD DENOTES CHORD DISTANCE
 - ORB DENOTES OFFICIAL RECORDS BOOK
 - PB DENOTES PLAT BOOK NUMBER
 - PG DENOTES PAGE NUMBER
 - PCP DENOTES PERMANENT CONTROL POINT
 - PRM DENOTES PERMANENT REFERENCE MONUMENT

- SURVEYOR'S NOTES:**
- THE BASE BEARING, AS SHOWN HEREON IS SOUTH 02°10'27" WEST ALONG THE EAST LINE OF TRACT E, FRENCHMAN'S RESERVE PCD - PLAT ONE.
 - IN THOSE INSTANCES WHERE UTILITY OR DRAINAGE STRUCTURES ARE CONSTRUCTED IN CONFLICT WITH THE PLATTED PERMANENT CONTROL POINT POSITION STRADDLERS MONUMENTED AS PERMANENT CONTROL POINTS WILL BE SET TO REFERENCE THE PLATTED POSITION.
 - INES THAT INTERSECT CURVES ARE NOT RADIAL UNLESS OTHERWISE NOTED.
 - THIS INSTRUMENT WAS PREPARED BY WM. R. VAN CAMPEN, P.S.M. NO. 2424, IN AND FOR THE OFFICES OF BENCH MARK LAND SURVEYING & MAPPING, INC., 4152 WEST BLUE HERON BOULEVARD, SUITE 121, RIVIERA BEACH, FLORIDA, 33407

BENCH MARK LAND SURVEYING & MAPPING, INC.
 4152 W. BLUE HERON BOULEVARD • SUITE 121
 RIVIERA BEACH • FLORIDA 33404
 PHONE: (561) 848-2102 • LB. 2171 • FAX: (561) 844-9659
 EMAIL: bmlsm@aol.com WEB: http://members.aol.com/bmlsm

RECORD PLAT
FRENCHMAN'S RESERVE PCD - PLAT E

OWN	KVC	FB	DATE	5/1/2003	NO.	P268	
CRD	WVC	FILE	PLAT	SCALE	1" = 40'	SHEET	3 OF 6



NOT PLATTED