

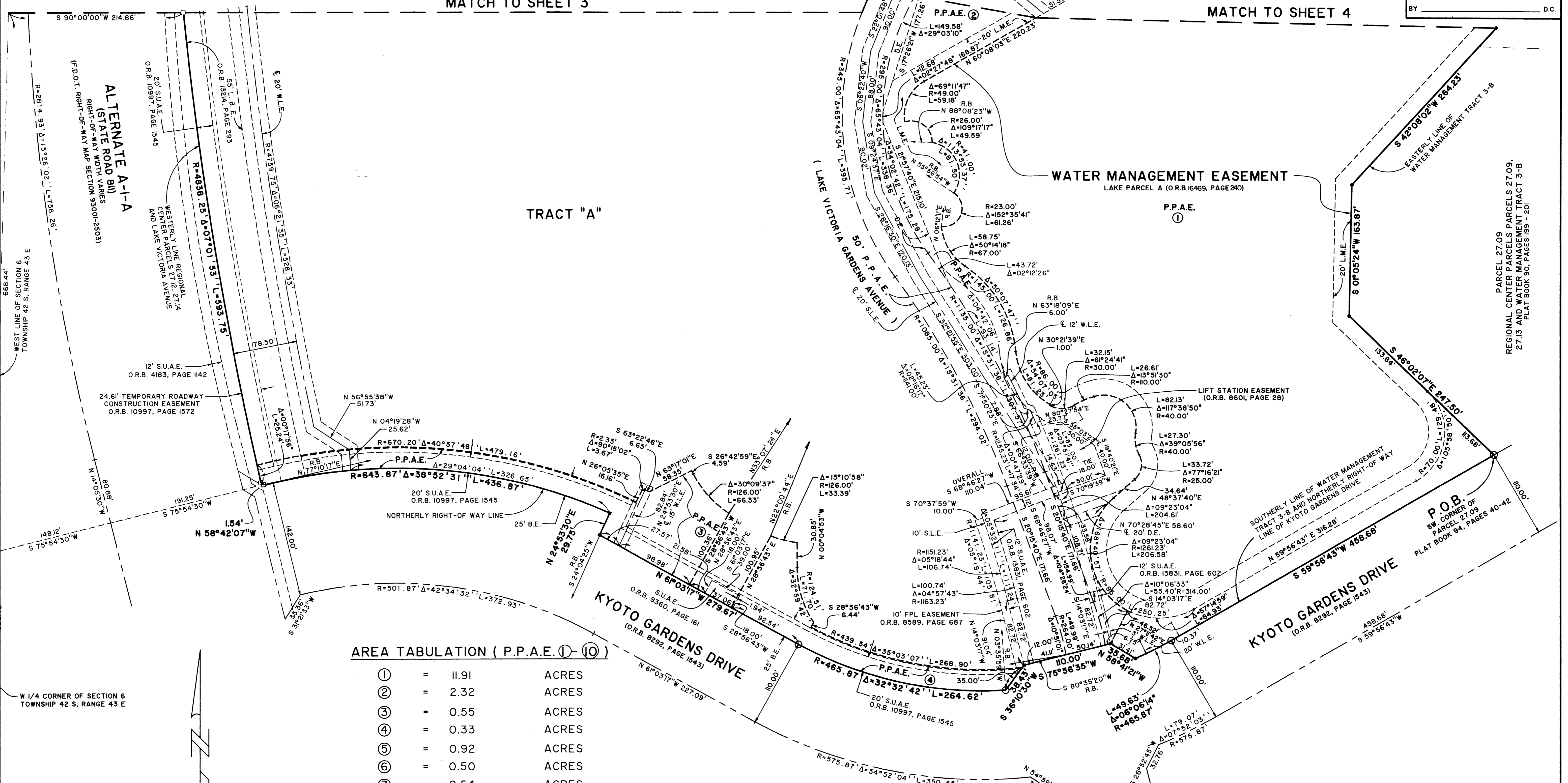
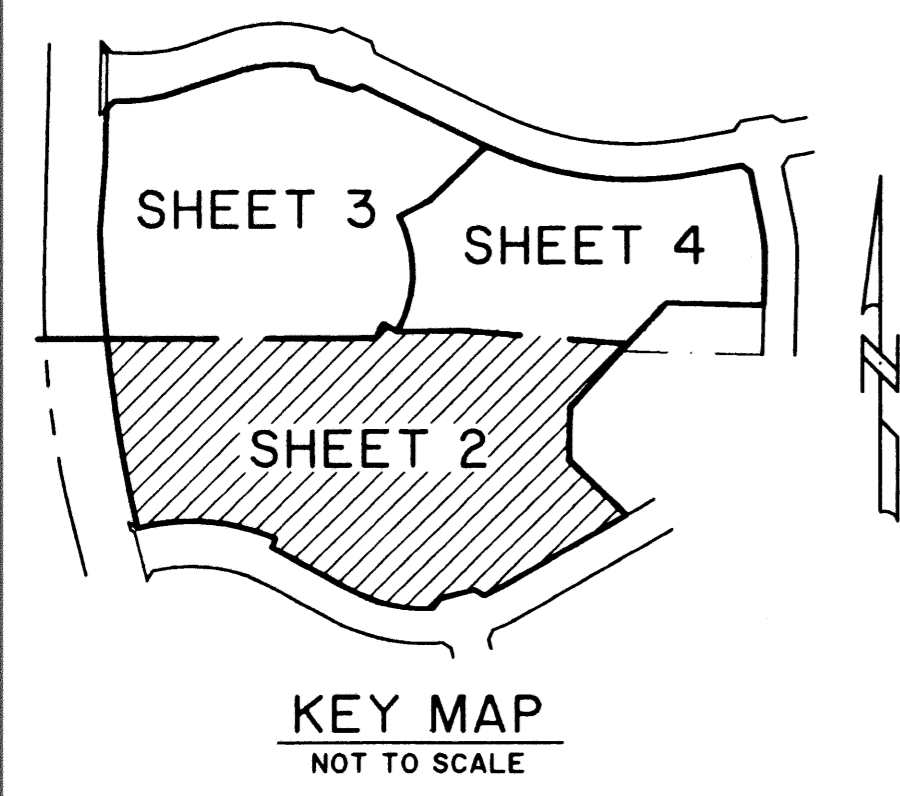
DOWNTOWN AT THE GARDENS AND LANDMARK

LYING IN SECTION 6, TOWNSHIP 42 SOUTH, RANGE 43 EAST, CITY OF PALM BEACH GARDENS, PALM BEACH COUNTY, FLORIDA, BEING A REPLAT OF REGIONAL CENTER PARCELS 27.12, 27.14 AND LAKE VICTORIA GARDENS AVENUE, AS RECORDED IN PLAT BOOK 94, PAGES 40 THROUGH 42, PUBLIC RECORDS OF PALM BEACH COUNTY, FLORIDA, AND A REPLAT OF WATER MANAGEMENT TRACT 3-B AND A PORTION OF PARCEL 27.13, REGIONAL CENTER PARCELS 27.09, 27.13 AND WATER MANAGEMENT TRACT 3-B, AS RECORDED IN PLAT BOOK 90, PAGES 199 THROUGH 201, PUBLIC RECORDS OF PALM BEACH COUNTY, FLORIDA.

SHEET 2 OF 4

13

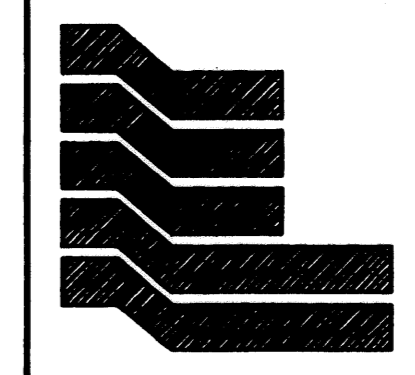
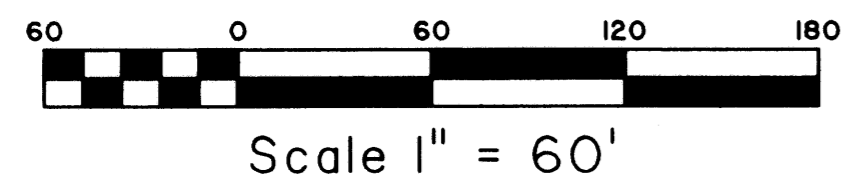
STATE OF FLORIDA SS
 COUNTY OF PALM BEACH
 THIS PLAT WAS FILED FOR RECORD AT _____
 M. THIS _____ DAY OF _____ 2004
 AND DULY RECORDED IN PLAT BOOK NO. _____
 ON PAGE _____
 DOROTHY H. WILKEN,
 CLERK OF THE CIRCUIT COURT
 BY _____ D.C.



AREA TABULATION (P.P.A.E. ①-⑩)

①	=	11.91	ACRES
②	=	2.32	ACRES
③	=	0.55	ACRES
④	=	0.33	ACRES
⑤	=	0.92	ACRES
⑥	=	0.50	ACRES
⑦	=	0.54	ACRES
⑧	=	0.05	ACRES
⑨	=	0.35	ACRES
⑩	=	0.44	ACRES
TOTAL	=	17.91	ACRES

REGIONAL CENTER PARCELS 27.12, 27.14
 AND LAKE VICTORIA GARDENS AVENUE,
 PLAT BOOK 94, PAGES 40 - 42



Landmark Surveying & Mapping Inc.
 1850 Forest Hill Boulevard
 Ph. (561) 433-5405 Suite 100 W.P.B. Florida
 LB # 4396

**DOWNTOWN AT THE GARDENS
 AND LANDMARK**