

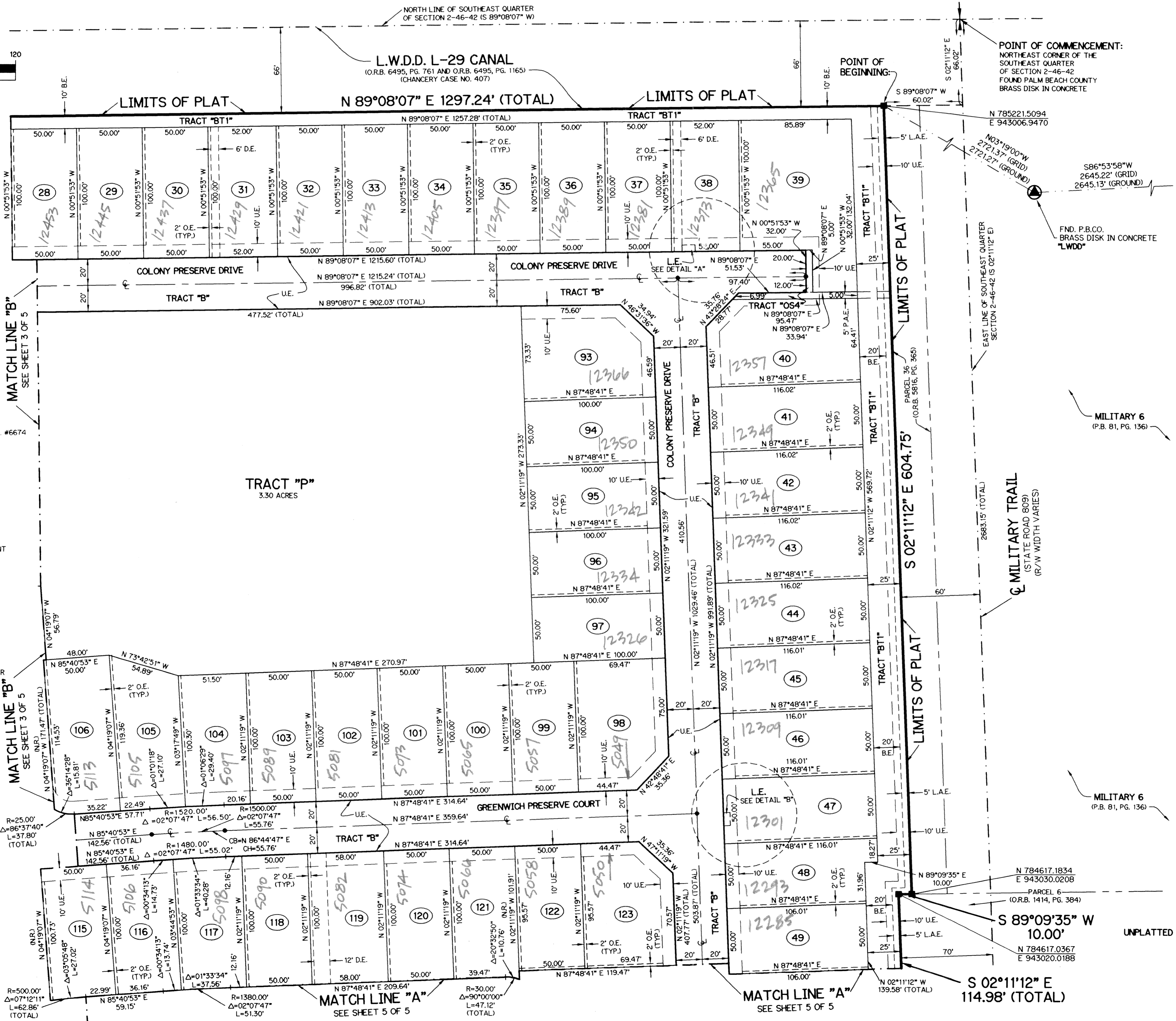
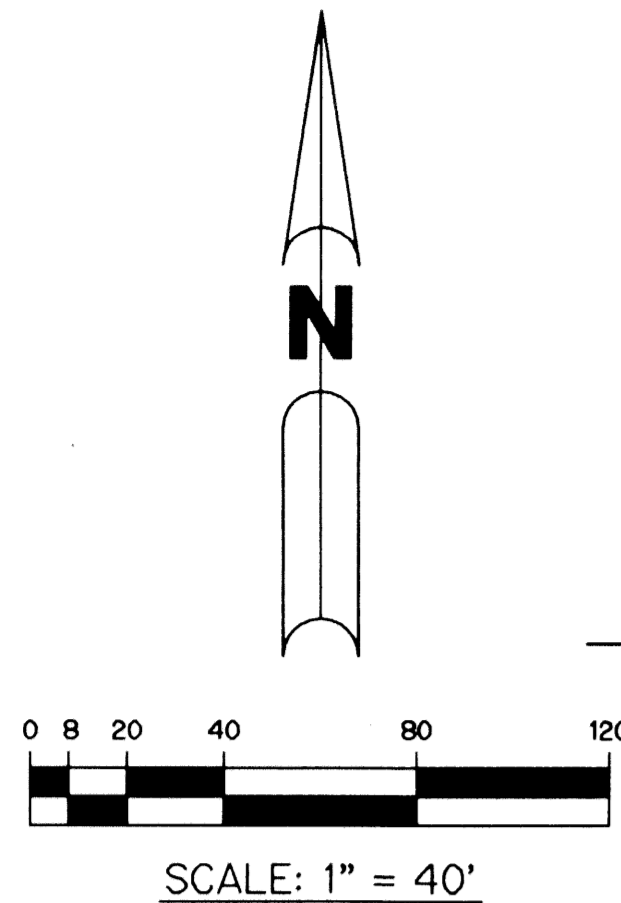
COLONY PRESERVE, P.U.D.

A PARCEL OF LAND LYING AND BEING WITHIN THE NORTHEAST QUARTER (N.E. 1/4)
OF THE SOUTHEAST QUARTER (S.E. 1/4) OF SECTION 2, TOWNSHIP 46 SOUTH,
RANGE 42 EAST, PALM BEACH COUNTY, FLORIDA

SHEET 4 OF 5 APRIL, 2003 UNPLATTED

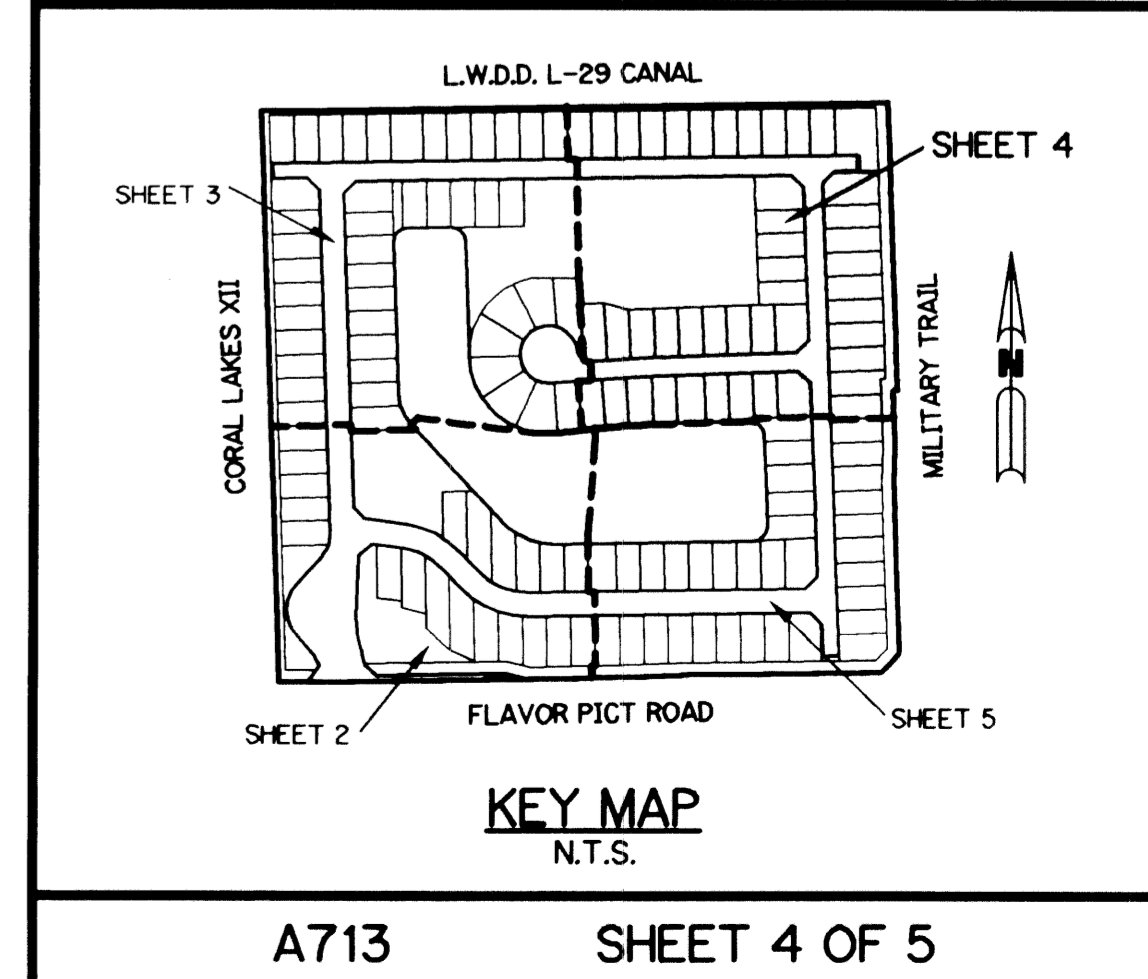
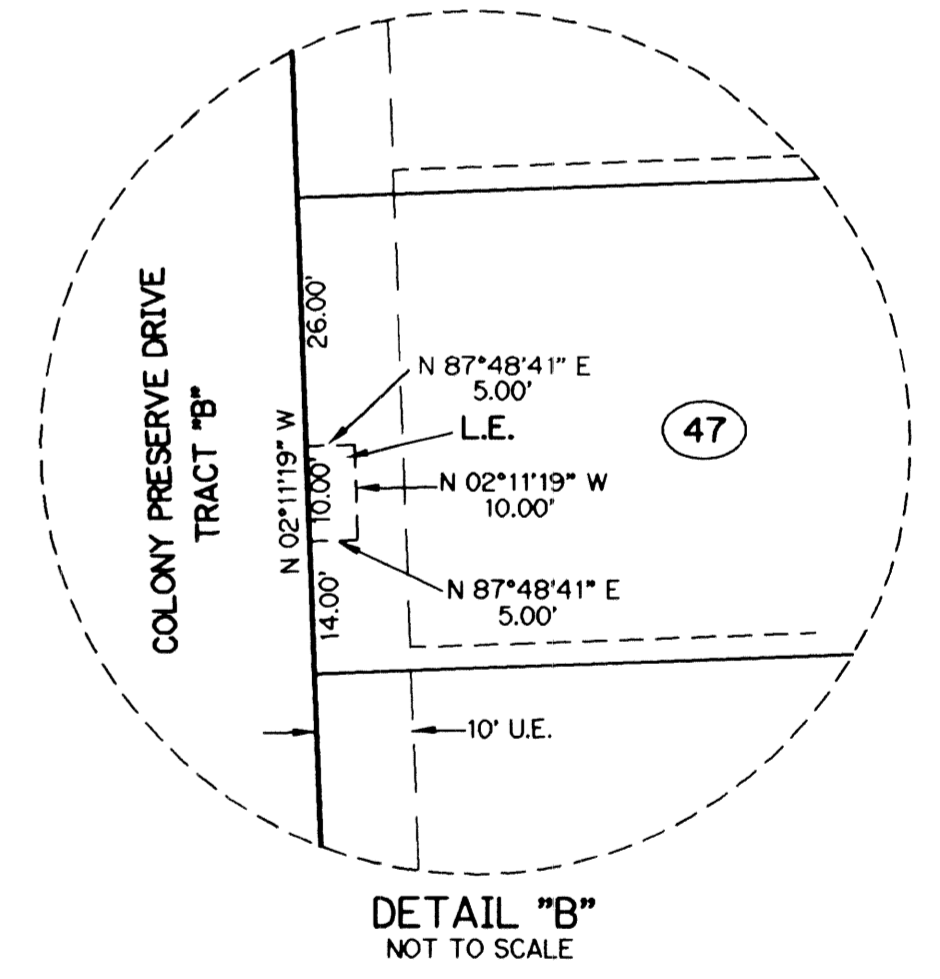
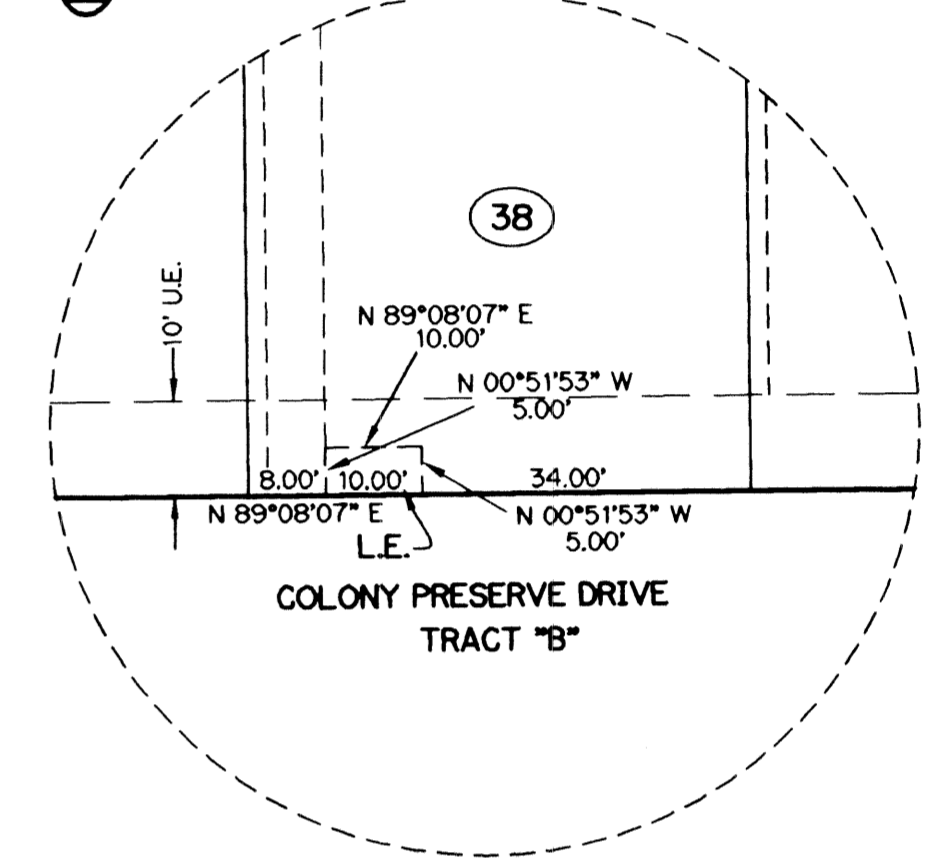
THIS INSTRUMENT PREPARED BY
WILBUR F. DIVINE, P.S.M. 4190, STATE OF FLORIDA
LAWSON, NOBLE AND WEBB, INC.
ENGINEERS PLANNERS SURVEYORS
420 COLUMBIA DRIVE
WEST PALM BEACH, FLORIDA 33409
LB-6674

22



- LEGEND:**
- - SET PERMANENT REFERENCE MONUMENT, L.B. #6674
 - - FOUND PERMANENT REFERENCE MONUMENT, L.B. #6674
 - - SET PERMANENT CONTROL POINT, L.B. #6674
 - △ - DELTA ANGLE
 - BE - BUFFER EASEMENT
 - CB - CHORD BEARING
 - CD - CHORD DISTANCE
 - CL - CENTERLINE
 - DB - DEED BOOK
 - DE - DRAINAGE EASEMENT
 - FND - FOUND
 - GND - GROUND
 - L - ARC LENGTH
 - LE - LANDSCAPE EASEMENT
 - LAE - LIMITED ACCESS EASEMENT
 - LSE - LANDSCAPE EASEMENT
 - LMAE - LAKE MAINTENANCE ACCESS EASEMENT
 - LME - LAKE MAINTENANCE EASEMENT
 - LWDD - LAKE WORTH DRAINAGE DISTRICT
 - NR - NOT RADIAL
 - N.T.S. - NOT TO SCALE
 - O.E. - OVERHANG EASEMENT
 - O.R.B. - OFFICIAL RECORD BOOK
 - P.A.E. - PEDESTRIAN ACCESS EASEMENT
 - P.B. - PLAT BOOK
 - P.B.C.O. - PALM BEACH COUNTY
 - P.C. - POINT OF CURVATURE
 - P.C.P. - PERMANENT CONTROL POINT
 - PS - PAGES
 - P.O.B. - POINT OF BEGINNING
 - P.O.C. - POINT OF COMMENCEMENT
 - P.S.M. - PROFESSIONAL SURVEYOR AND MAPPER
 - P.T. - POINT OF TANGENCY
 - R - RADIUS
 - RAD. - RADIAL
 - R/W - RIGHT-OF-WAY
 - TYP. - TYPICAL
 - U.E. - UTILITY EASEMENT

NOTE:
COORDINATES SHOWN ARE GRID COORDINATES
DATUM = NAD 83 (1990 ADJUSTMENT)
ZONE = FLORIDA EAST ZONE
LINEAR UNIT = U.S. SURVEY FEET
COORDINATE SYSTEM = 1983 STATE PLANE
TRANSVERSE MERCATOR PROJECTION
ALL DISTANCES ARE GROUND
SCALE FACTOR = 1.0000351
PLAT BEARING = GRID BEARING
NO ROTATION



SUBDIVISION: COLONY PRESERVE, P.U.D.
PAGE: 22
BOOK: 101
FLOOD MAP: #205A
ZONING: PUD
QUAD: #36
SE
TAZ: 495
PUD NAME: COLONY PRESERVE