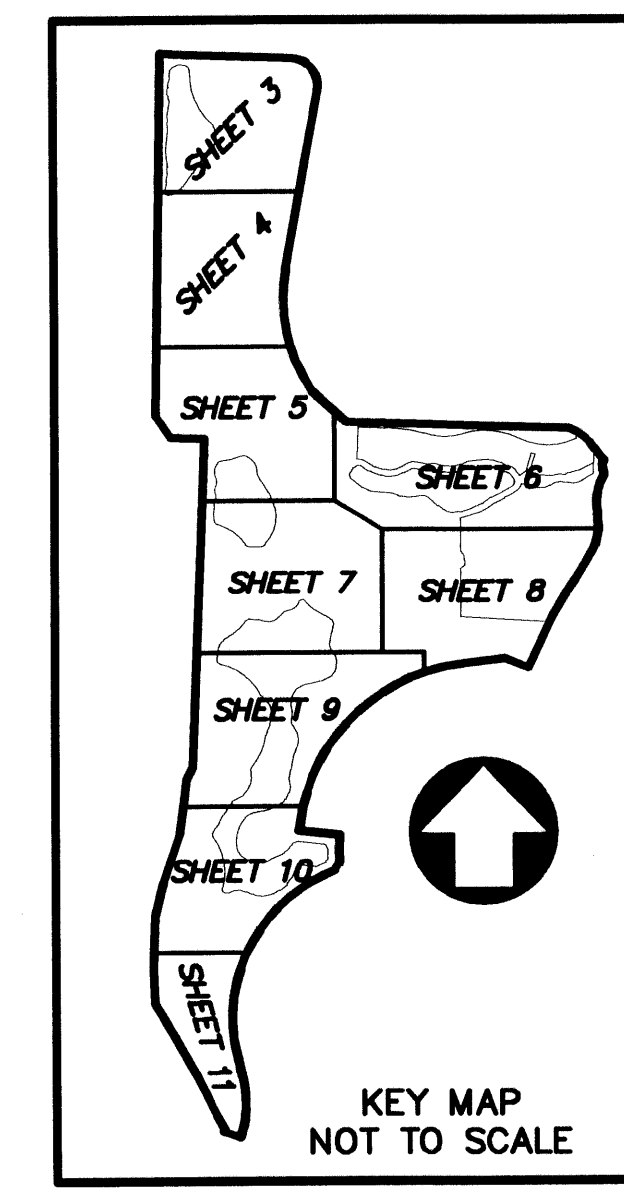


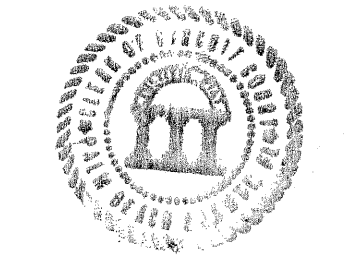
OLD PALM PLAT FIVE

A REPLAT OF A PORTION OF PARCEL 1, OLD PALM PLAT 1 AS RECORDED IN PLAT BOOK 96, PAGES 31 THROUGH 34, OF THE PUBLIC RECORDS OF PALM BEACH COUNTY, FLORIDA SITUATE IN THE SOUTH ONE-HALF OF SECTION 35, TOWNSHIP 41 SOUTH, RANGE 42 EAST, AND SECTION 2, TOWNSHIP 42 SOUTH, RANGE 42 EAST, CITY OF PALM BEACH GARDENS, PALM BEACH COUNTY, FLORIDA
 FEBRUARY, 2004 SHEET 1 OF 11



57

STATE OF FLORIDA
 COUNTY OF PALM BEACH
 THIS PLAT WAS FILED FOR RECORD AT A M.
 THIS 21st DAY OF February A.D. 2004 AND DULY RECORDED IN PLAT BOOK 101 ON PAGES 57 THROUGH 67
 DOROTHY H. WILKEN
 CLERK CIRCUIT COURT
 BY: Julia P. Johnson
 (DEPUTY CLERK)



DEDICATION:

KNOW ALL MEN BY THESE PRESENTS THAT COMMUNITIES FINANCE COMPANY, LLC, A DELAWARE LIMITED LIABILITY COMPANY AUTHORIZED TO TRANSACT BUSINESS IN FLORIDA, OWNER OF THE LAND SHOWN HEREON AS "OLD PALM PLAT FIVE", BEING A REPLAT OF A PORTION OF PARCEL 1, "OLD PALM PLAT 1", ACCORDING TO THE PLAT THEREOF, AS RECORDED IN PLAT BOOK 96, PAGES 31 THROUGH 34 OF THE PUBLIC RECORDS OF PALM BEACH COUNTY, FLORIDA, SAID LANDS SITUATE IN THE SOUTH ONE-HALF OF SECTION 35, TOWNSHIP 41 SOUTH, RANGE 42 EAST, AND SECTION 2, TOWNSHIP 42 SOUTH, RANGE 42 EAST, CITY OF PALM BEACH GARDENS, PALM BEACH COUNTY, FLORIDA, BEING MORE PARTICULARLY DESCRIBED AS FOLLOWS:

BEGINNING AT THE NORTHWEST CORNER OF TRACT "S-1", OLD PALM PLAT TWO, ACCORDING TO THE PLAT THEREOF AS RECORDED IN PLAT BOOK 98, PAGES 139 THROUGH 145 OF THE PUBLIC RECORDS OF PALM BEACH COUNTY, FLORIDA; SAID POINT BEING THE BEGINNING OF A CURVE CONCAVE TO THE WEST, FROM WHICH A RADIAL LINE BEARS NORTH 80°12'13" WEST, SAID CURVE HAVING A RADIUS OF 568.00 FEET AND A CENTRAL ANGLE OF 08°53'15", THENCE ALONG THE WESTERLY BOUNDARY OF SAID TRACT "S-1" AND THE ARC OF SAID CURVE, A DISTANCE OF 88.11 FEET; THENCE NORTH 71°18'58" WEST, A DISTANCE OF 92.84 FEET; THENCE NORTH 60°46'08" EAST, A DISTANCE OF 10.96 FEET; THENCE NORTH 29°13'52" WEST, A DISTANCE OF 95.00 FEET; THENCE NORTH 25°23'08" WEST, A DISTANCE OF 220.50 FEET; THENCE NORTH 29°13'52" WEST, A DISTANCE OF 220.00 FEET; THENCE NORTH 29°12'35" WEST, A DISTANCE OF 60.00 FEET; THENCE NORTH 29°13'52" WEST, A DISTANCE OF 169.12 FEET; THENCE NORTH 02°43'12" WEST, A DISTANCE OF 172.43 FEET; THENCE NORTH 02°10'08" EAST, A DISTANCE OF 283.77 FEET; THENCE NORTH 13°20'34" EAST, A DISTANCE OF 182.42 FEET; THENCE NORTH 18°28'52" EAST, A DISTANCE OF 267.42 FEET; THENCE NORTH 07°36'49" EAST, A DISTANCE OF 290.00 FEET; THENCE NORTH 27°30'23" EAST, A DISTANCE OF 66.39 FEET; THENCE NORTH 02°10'08" EAST, A DISTANCE OF 1,720.00 FEET; THENCE NORTH 87°49'52" WEST, A DISTANCE OF 175.00 FEET; THENCE NORTH 33°23'30" WEST, A DISTANCE OF 139.85 FEET; THENCE NORTH 00°57'25" EAST, A DISTANCE OF 1,874.19 FEET; THENCE NORTH 00°00'00" EAST, A DISTANCE OF 20.81 FEET; THENCE SOUTH 85°37'06" EAST, A DISTANCE OF 82.56 FEET; THENCE SOUTH 87°56'04" EAST, A DISTANCE OF 591.00 FEET TO THE BEGINNING OF A CURVE CONCAVE TO THE SOUTHWEST, HAVING A RADIUS OF 150.00 FEET AND A CENTRAL ANGLE OF 98°25'45"; THENCE SOUTHEASTERLY ALONG THE ARC OF SAID CURVE A DISTANCE OF 257.69 FEET; THENCE SOUTH 10°29'41" WEST, A DISTANCE OF 939.36 FEET TO THE BEGINNING OF A CURVE CONCAVE TO THE EAST, HAVING A RADIUS OF 860.00 FEET AND A CENTRAL ANGLE OF 44°21'08"; THENCE SOUTHERLY ALONG THE ARC OF SAID CURVE, A DISTANCE OF 665.72 FEET; THENCE ALONG A NON-TANGENT LINE SOUTH 47°59'47" EAST, A DISTANCE OF 245.63 FEET; THENCE SOUTH 88°11'13" EAST, A DISTANCE OF 1,045.69 FEET; THENCE SOUTH 88°10'50" EAST, A DISTANCE OF 106.16 FEET TO THE BEGINNING OF A NON-TANGENT CURVE CONCAVE TO THE SOUTHWEST, TO WHICH A RADIAL LINE BEARS SOUTH 21°11'18" WEST, SAID CURVE HAVING A RADIUS OF 265.00 FEET AND A CENTRAL ANGLE OF 37°24'16"; THENCE SOUTHEASTERLY ALONG THE ARC OF SAID CURVE, A DISTANCE OF 173.00 FEET TO A POINT OF REVERSE CURVE TO THE LEFT HAVING A RADIUS OF 285.00 FEET AND A CENTRAL ANGLE OF 15°00'34"; THENCE SOUTHEASTERLY ALONG THE ARC OF SAID CURVE, A DISTANCE OF 74.66 FEET TO THE BEGINNING OF A NON-TANGENT CURVE CONCAVE TO THE EAST, TO WHICH A RADIAL LINE BEARS SOUTH 66°43'14" EAST, SAID CURVE HAVING A RADIUS OF 84.00 FEET AND A CENTRAL ANGLE OF 50°50'15"; THENCE SOUTHERLY ALONG THE ARC OF SAID CURVE, A DISTANCE OF 74.53 FEET TO THE BEGINNING OF A NON-TANGENT CURVE CONCAVE TO THE EAST, TO WHICH A RADIAL LINE BEARS SOUTH 59°00'49" EAST, SAID CURVE HAVING A RADIUS OF 287.00 FEET AND A CENTRAL ANGLE OF 44°09'14"; THENCE SOUTHERLY ALONG THE ARC OF SAID CURVE, A DISTANCE OF 221.17 FEET TO A POINT OF REVERSE CURVE TO THE RIGHT HAVING A RADIUS OF 263.00 FEET AND A CENTRAL ANGLE OF 45°19'59"; THENCE SOUTHERLY ALONG THE ARC OF SAID CURVE, A DISTANCE OF 208.09 FEET TO A POINT OF REVERSE CURVE TO THE LEFT HAVING A RADIUS OF 4,065.22 FEET AND A CENTRAL ANGLE OF 02°16'41"; THENCE SOUTHWESTERLY ALONG THE ARC OF SAID CURVE, A DISTANCE OF 161.63 FEET TO A POINT OF REVERSE CURVE TO THE RIGHT HAVING A RADIUS OF 997.00 FEET AND A CENTRAL ANGLE OF 04°45'53"; THENCE SOUTHWESTERLY ALONG THE ARC OF SAID CURVE, A DISTANCE OF 82.91 FEET TO A POINT OF REVERSE CURVE TO THE LEFT HAVING A RADIUS OF 1,065.00 FEET AND A CENTRAL ANGLE OF 08°01'29"; THENCE SOUTHWESTERLY ALONG THE ARC OF SAID CURVE, A DISTANCE OF 149.16 FEET TO A POINT OF COMPOUND CURVE TO THE LEFT HAVING A RADIUS OF 4,077.22 FEET AND A CENTRAL ANGLE OF 04°07'31"; THENCE SOUTHWESTERLY ALONG THE ARC OF SAID CURVE, A DISTANCE OF 293.55 FEET; THENCE NORTH 67°29'50" WEST, A DISTANCE OF 129.37 FEET; THENCE SOUTH 82°53'47" WEST, A DISTANCE OF 228.82 FEET TO THE BEGINNING OF A CURVE CONCAVE TO THE SOUTHEAST, HAVING A RADIUS OF 975.00 FEET AND A CENTRAL ANGLE OF 77°01'08"; THENCE SOUTHWESTERLY ALONG THE ARC OF SAID CURVE, A DISTANCE OF 1,310.63 FEET; THENCE SOUTH 84°07'22" EAST, A DISTANCE OF 215.00 FEET TO THE BEGINNING OF A NON-TANGENT CURVE CONCAVE TO THE EAST, TO WHICH A RADIAL LINE BEARS SOUTH 84°07'22" EAST, SAID CURVE HAVING A RADIUS OF 760.00 FEET AND A CENTRAL ANGLE OF 10°54'08"; THENCE SOUTHERLY ALONG THE ARC OF SAID CURVE, A DISTANCE OF 144.61 FEET; THENCE ALONG A NON-TANGENT LINE SOUTH 32°24'09" WEST, A DISTANCE OF 46.49 FEET TO THE BEGINNING OF A NON-TANGENT CURVE CONCAVE TO THE SOUTHEAST, TO WHICH A RADIAL LINE BEARS SOUTH 21°02'55" EAST, SAID CURVE HAVING A RADIUS OF 835.50 FEET AND A CENTRAL ANGLE OF 87°25'14"; THENCE SOUTHWESTERLY ALONG THE ARC OF SAID CURVE, A DISTANCE OF 1,274.79 FEET TO A POINT OF REVERSE CURVE TO THE RIGHT HAVING A RADIUS OF 588.00 FEET AND A CENTRAL ANGLE OF 28°15'55"; THENCE SOUTHERLY ALONG THE ARC OF SAID CURVE, A DISTANCE OF 280.21 FEET TO THE POINT OF BEGINNING.

CONTAINING 121.5961 ACRES, MORE OR LESS.

HAS CAUSED THE SAME TO BE SURVEYED AND PLATTED AS SHOWN HEREON AND DOES HEREBY DEDICATE AS FOLLOWS:

- THE GOLF TRACT SHOWN AND DESIGNATED HEREON AS TRACT "G-1" IS HEREBY RESERVED BY COMMUNITIES FINANCE COMPANY, LLC, A DELAWARE LIMITED LIABILITY COMPANY AUTHORIZED TO TRANSACT BUSINESS IN FLORIDA, IT SUCCESSORS AND/OR ASSIGNS FOR GOLF COURSE PURPOSES AND SHALL BE THE PERPETUAL MAINTENANCE OBLIGATION OF SAID LIMITED LIABILITY COMPANY, ITS SUCCESSORS AND/OR ASSIGNS, WITHOUT RECOURSE TO THE CITY OF PALM BEACH GARDENS, FLORIDA.
- THE OPEN SPACE TRACTS SHOWN AND DESIGNATED HEREON AS TRACTS "OS-1", "OS-2", "OS-3", "OS-4" AND "OS-5" ARE HEREBY RESERVED BY COMMUNITIES FINANCE COMPANY, LLC, A DELAWARE LIMITED LIABILITY COMPANY AUTHORIZED TO TRANSACT BUSINESS IN FLORIDA, IT SUCCESSORS AND/OR ASSIGNS FOR OPEN SPACE PURPOSES AND SHALL BE THE PERPETUAL MAINTENANCE OBLIGATION OF SAID LIMITED LIABILITY COMPANY, ITS SUCCESSORS AND/OR ASSIGNS, WITHOUT RECOURSE TO THE CITY OF PALM BEACH GARDENS, FLORIDA.

- THE LAKE TRACTS SHOWN AND DESIGNATED HEREON AS TRACTS "L-4", "L-5", "L-6" AND "L-7" ARE HEREBY RESERVED BY COMMUNITIES FINANCE COMPANY, LLC, A DELAWARE LIMITED LIABILITY COMPANY AUTHORIZED TO TRANSACT BUSINESS IN FLORIDA, IT SUCCESSORS AND/OR ASSIGNS, FOR CONSTRUCTION, STORM WATER MANAGEMENT AND DRAINAGE PURPOSE SAID LAKE TRACTS "L-4" THROUGH "L-7" SHALL BE THE PERPETUAL MAINTENANCE RESPONSIBILITY OF SAID LIMITED LIABILITY COMPANY, ITS SUCCESSORS AND/OR ASSIGNS, WITHOUT RECOURSE TO THE NORTHERN PALM BEACH COUNTY IMPROVEMENT DISTRICT AND WITHOUT RECOURSE TO THE CITY OF PALM BEACH GARDENS, FLORIDA.
- THE STREET TRACT SHOWN AND DESIGNATED HEREON AS TRACT "S-1", IS HEREBY RESERVED BY COMMUNITIES FINANCE COMPANY, LLC, A DELAWARE LIMITED LIABILITY COMPANY AUTHORIZED TO TRANSACT BUSINESS IN FLORIDA, IT SUCCESSORS AND/OR ASSIGNS, AS PRIVATE ROADWAY, EXCLUSIVELY FOR INGRESS, EGRESS, DRAINAGE, UTILITIES, CABLE TELEVISION SYSTEMS AND RELATED PURPOSE SAID TRACT "S-1", SHALL BE THE PERPETUAL MAINTENANCE RESPONSIBILITY OF SAID LIMITED LIABILITY COMPANY, ITS SUCCESSORS AND/OR ASSIGNS, WITHOUT RECOURSE TO THE NORTHERN PALM BEACH COUNTY IMPROVEMENT DISTRICT AND WITHOUT RECOURSE TO THE CITY OF PALM BEACH GARDENS, FLORIDA.
- THE RECREATION TRACT SHOWN AND DESIGNATED HEREON AS TRACT "F-1" IS HEREBY RESERVED BY COMMUNITIES FINANCE COMPANY, LLC, A DELAWARE LIMITED LIABILITY COMPANY AUTHORIZED TO TRANSACT BUSINESS IN FLORIDA, IT SUCCESSORS AND/OR ASSIGNS FOR OPEN SPACE RECREATION PURPOSES AND SHALL BE THE PERPETUAL MAINTENANCE OBLIGATION OF SAID LIMITED LIABILITY COMPANY, ITS SUCCESSORS AND/OR ASSIGNS, WITHOUT RECOURSE TO THE CITY OF PALM BEACH GARDENS, FLORIDA.
- THE UTILITY EASEMENTS AS SHOWN HEREON AND DESIGNATED U.E., ARE HEREBY DEDICATED IN PERPETUITY FOR THE CONSTRUCTION, INSTALLATION, MAINTENANCE, AND OPERATION OF UTILITY FACILITIES, INCLUDING CABLE TELEVISION AND STREET LIGHTING SYSTEMS THE CONSTRUCTION, INSTALLATION, MAINTENANCE, AND OPERATION OF CABLE TELEVISION AND STREET LIGHTING SYSTEMS SHALL NOT INTERFERE WITH THE CONSTRUCTION AND MAINTENANCE OF OTHER UTILITIES
- THE DRAINAGE EASEMENTS AS SHOWN HEREON AND DESIGNATED D.E., ARE HEREBY DEDICATED IN PERPETUITY FOR DRAINAGE PURPOSES. THE MAINTENANCE OF ALL DRAINAGE FACILITIES LOCATED THEREIN SHALL BE THE PERPETUAL MAINTENANCE OBLIGATION OF COMMUNITIES FINANCE COMPANY, LLC, A DELAWARE LIMITED LIABILITY COMPANY AUTHORIZED TO TRANSACT BUSINESS IN FLORIDA, IT SUCCESSORS AND/OR ASSIGNS WITHOUT RECOURSE TO THE NORTHERN PALM BEACH COUNTY IMPROVEMENT DISTRICT AND WITHOUT RECOURSE TO THE CITY OF PALM BEACH GARDENS, FLORIDA.
- THE WATERLINE AND SEWERLINE EASEMENTS AS SHOWN HEREON AND DESIGNATED WSE, ARE HEREBY DEDICATED TO SEACOAST UTILITY AUTHORITY, ITS SUCCESSORS AND ASSIGNS, FOR INSTALLATION, OPERATION AND MAINTENANCE OF WATER FACILITIES SAID LANDS ENCUMBERED BY SAID EASEMENTS SHALL BE THE PERPETUAL OBLIGATION OF THE OWNER OR OWNERS OF THE FEE SIMPLE INTEREST IN SAID LANDS, THEIR SUCCESSORS AND ASSIGNS.
- NON-EXCLUSIVE EASEMENT FOR INGRESS AND EGRESS OVER TRACT "S-1" IS HEREBY DEDICATED TO SEACOAST UTILITY AUTHORITY, ITS SUCCESSORS AND/OR ASSIGNS FOR ACCESS PURPOSES ONLY. SAID TRACT SHALL BE THE PERPETUAL MAINTENANCE OBLIGATION OF COMMUNITIES FINANCE COMPANY, LLC, A DELAWARE LIMITED LIABILITY COMPANY AUTHORIZED TO TRANSACT BUSINESS IN FLORIDA, IT SUCCESSORS AND/OR ASSIGNS; NON-EXCLUSIVE EASEMENT ON, OVER AND UNDER SAID TRACT "S-1" IS HEREBY DEDICATED TO SEACOAST UTILITY AUTHORITY, ITS SUCCESSORS AND/OR ASSIGNS FOR INSTALLATION, OPERATION AND MAINTENANCE OF WATER AND SEWER FACILITIES, AND NO ABOVE GROUND UTILITIES OR APPURTENANCES THERETO ARE TO BE CONSTRUCTED THAT WOULD OBSTRUCT OR PREVENT ACCESS OVER SAID TRACT "S-1".
- THE LAKE MAINTENANCE EASEMENTS SHOWN HEREON AND DESIGNATED L.M.E., ARE HEREBY RESERVED BY COMMUNITIES FINANCE COMPANY, LLC, A DELAWARE LIMITED LIABILITY COMPANY AUTHORIZED TO TRANSACT BUSINESS IN FLORIDA, IT SUCCESSORS AND/OR ASSIGNS, FOR ACCESS TO AND MAINTENANCE OF ADJACENT WATER MANAGEMENT FACILITIES SAID LAKE MAINTENANCE EASEMENTS BEING THE PERPETUAL MAINTENANCE RESPONSIBILITY OF SAID LIMITED LIABILITY COMPANY, ITS SUCCESSORS AND/OR ASSIGNS, WITHOUT RECOURSE TO THE NORTHERN PALM BEACH COUNTY IMPROVEMENT DISTRICT AND WITHOUT RECOURSE TO THE CITY OF PALM BEACH GARDENS, FLORIDA.

IN WITNESS WHEREOF, COMMUNITIES FINANCE COMPANY, LLC, A DELAWARE LIMITED LIABILITY COMPANY AUTHORIZED TO TRANSACT BUSINESS IN FLORIDA, HAS CAUSED THESE PRESENTS TO BE SIGNED BY ITS VICE PRESIDENT, AND ITS SEAL TO BE AFFIXED HERETO BY AND WITH THE AUTHORITY OF ITS BOARD OF DIRECTORS, THIS 21st DAY OF January, 2004.

COMMUNITIES FINANCE COMPANY, LLC
 A DELAWARE LIMITED LIABILITY COMPANY
 AUTHORIZED TO TRANSACT BUSINESS IN FLORIDA
 BY: Kenneth G. Tuma
 KENNETH G. TUMA
 VICE PRESIDENT

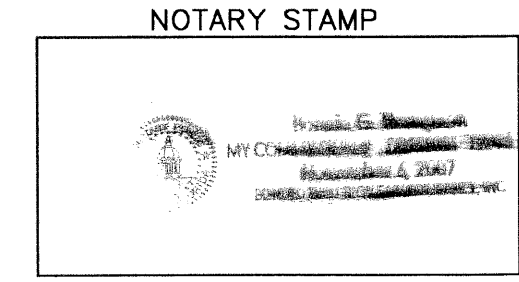
WITNESS: Steve Leonhardt
 STEVE LEONHARDT

WITNESS: Edwin J. Hill
 EDWIN J. HILL

ACKNOWLEDGEMENT:

STATE OF FLORIDA }
 COUNTY OF PALM BEACH } SS
 BEFORE ME PERSONALLY APPEARED KENNETH G. TUMA WHO IS PERSONALLY KNOWN TO ME, AND WHO EXECUTED THE FOREGOING INSTRUMENT AS THE VICE PRESIDENT OF COMMUNITIES FINANCE COMPANY, LLC, A DELAWARE LIMITED LIABILITY COMPANY AUTHORIZED TO TRANSACT BUSINESS IN FLORIDA, AND SEVERALLY ACKNOWLEDGED TO AND BEFORE ME THAT HE EXECUTED SUCH INSTRUMENT AS SUCH OFFICER OF SAID COMPANY, AND THAT THE SEAL AFFIXED TO THE FOREGOING INSTRUMENT IS THE AUTHORIZED SEAL OF SAID COMPANY AND THAT IT WAS AFFIXED TO SAID INSTRUMENT BY DUE AND REGULAR CORPORATE AUTHORITY, AND THAT SAID INSTRUMENT IS THE FREE ACT AND DEED OF SAID COMPANY.
 WITNESS MY HAND AND OFFICIAL SEAL THIS 21st DAY OF January, 2004.

MY COMMISSION EXPIRES: Nov 6, 2007
 DATE



BY: Bonnie G. Thompson
 NOTARY PUBLIC
 PRINT NAME: Bonnie G. Thompson
 LICENSE NUMBER: 00156366

TITLE CERTIFICATION:

I, HUGH W. PERRY, A DULY LICENSED ATTORNEY IN THE STATE OF FLORIDA, DO HEREBY CERTIFY THAT I HAVE EXAMINED THE TITLE TO THE HEREON DESCRIBED PROPERTY; THAT I FIND THE TITLE TO THE PROPERTY IS VESTED IN COMMUNITIES FINANCE COMPANY, LLC, A DELAWARE LIMITED LIABILITY COMPANY AUTHORIZED TO TRANSACT BUSINESS IN FLORIDA, THAT THE CURRENT TAXES HAVE BEEN PAID; THAT THERE ARE NO MORTGAGES OF RECORD; AND THAT THERE ARE ENCUMBRANCES OF RECORD BUT THOSE ENCUMBRANCES DO NOT PROHIBIT THE CREATION OF THE SUBDIVISION DEPICTED BY THIS PLAT.

January 19, 2004
 DATE

BY: Hugh W. Perry
 ATTORNEY AT LAW
 HUGH W. PERRY
 FLORIDA BAR NO. 0603600

NORTHERN PALM BEACH COUNTY IMPROVEMENT DISTRICT ACKNOWLEDGEMENT:

STATE OF FLORIDA }
 COUNTY OF PALM BEACH } SS
 THE NORTHERN PALM BEACH COUNTY IMPROVEMENT DISTRICT (NORTHERN) ACKNOWLEDGES THAT THERE ARE NO DEDICATIONS TO, NOR MAINTENANCE OBLIGATIONS BEING INCURRED BY SAID DISTRICT ON THIS PLAT.
 DATED THIS 28th DAY OF January, 2004.
 NORTHERN PALM BEACH COUNTY IMPROVEMENT DISTRICT

ATTEST: Mike Barden
 O'NEAL BARDEN JR.
 SECRETARY, BOARD OF SUPERVISORS

BY: Paul Valerio
 HUGO P. UNRUH HAL R. VALECHE
 PRESIDENT, BOARD OF SUPERVISORS

APPROVALS:

CITY OF PALM BEACH GARDENS }
 COUNTY OF PALM BEACH, FLORIDA } SS

THIS PLAT IS HEREBY APPROVED FOR RECORD DATED THIS 19th DAY OF February, 2004.

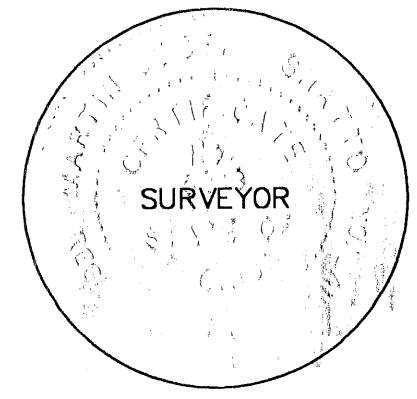
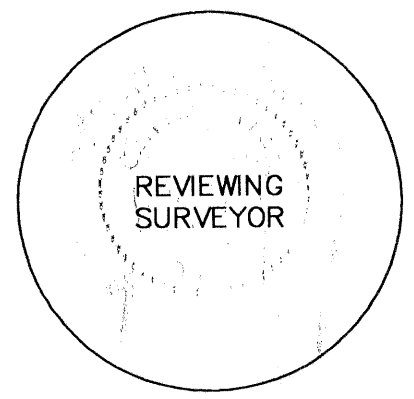
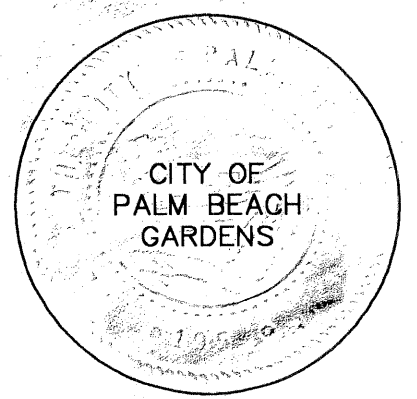
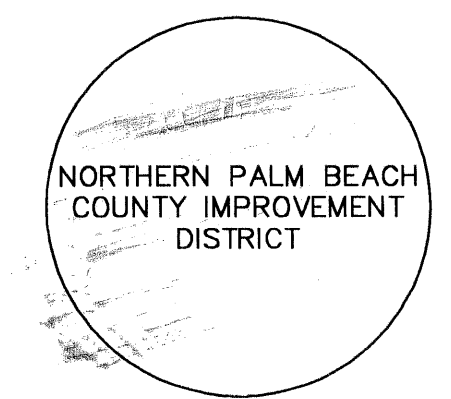
ATTEST: Patricia Snider
 PATRICIA SNIDER
 CITY CLERK

BY: Eric Jabrin
 ERIC JABRIN
 MAYOR

CITY ENGINEER:

THIS PLAT IS HEREBY ACCEPTED FOR RECORD DATED THIS 19th DAY OF February, 2004.

BY: Daniel P. Clark
 DANIEL P. CLARK P.E.,
 CITY ENGINEER



Wantman Group, Inc.
 Engineering ♦ Surveying ♦ Mapping
 901 NORTHPOINT PARKWAY, SUITE 204
 WEST PALM BEACH, FL 33407
 (561) 687-2220 phone (561) 687-1110 fax
 CERT No. 6091 LB No. 7055
 THIS INSTRUMENT WAS PREPARED BY MARTIN J. SHATTO, P.S.M.
 PROFESSIONAL SURVEYOR AND MAPPER, REGISTRATION NO. 5219
 IN THE OFFICES OF WANTMAN GROUP, INC.