

CARNAHAN • PROCTOR • CROSS, INC.
 CONSULTING ENGINEERS • SURVEYORS • PLANNERS
 3931 RCA BOULEVARD, SUITE 3114, PALM BEACH GARDENS, FLORIDA, 33410
 PHONE: 561-799-5515 FAX: 561-799-5643

OCTOBER 2003

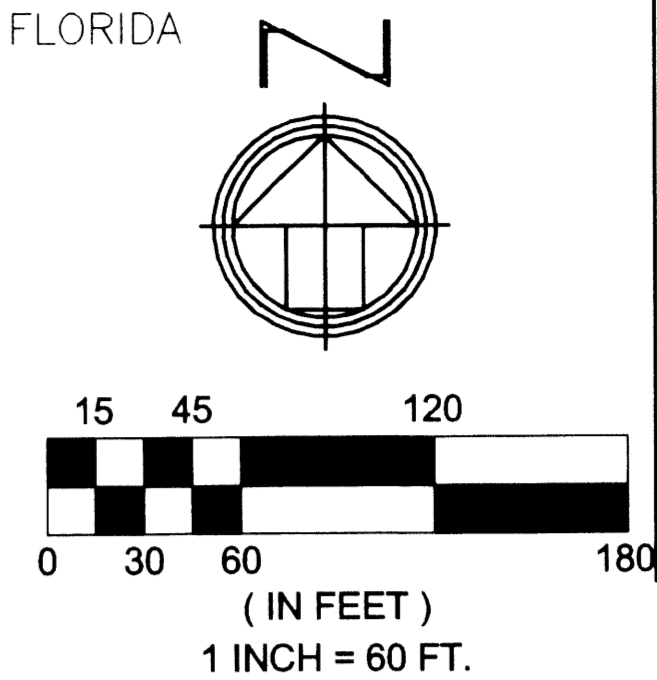
021107

DRL

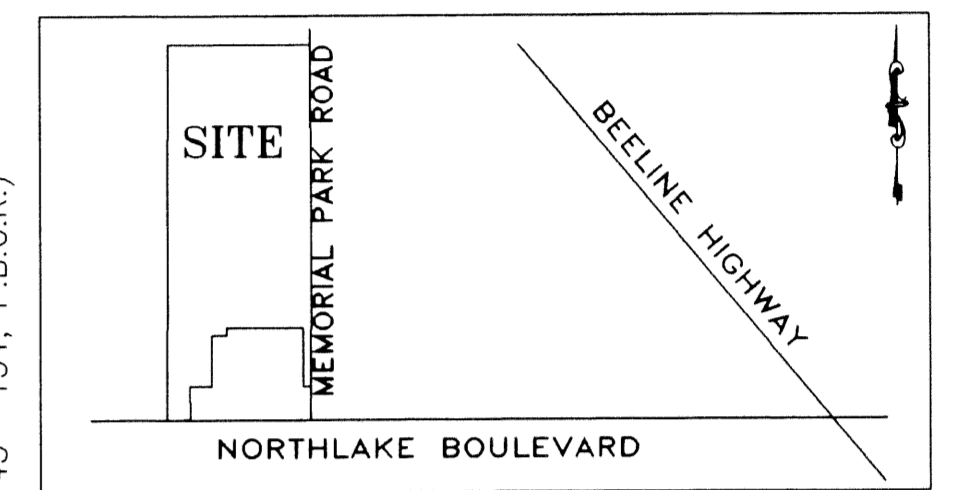
OSPREY ISLES, A P.U.D.

BEING A REPLAT OF A PORTION OF SHALOM MEMORIAL PARK, AS RECORDED IN PLAT BOOK 31, PAGE 194, PUBLIC RECORDS OF PALM BEACH COUNTY, FLORIDA, TOGETHER WITH A PORTION OF SECTION 14, TOWNSHIP 42 SOUTH, RANGE 41 EAST, PALM BEACH COUNTY, FLORIDA

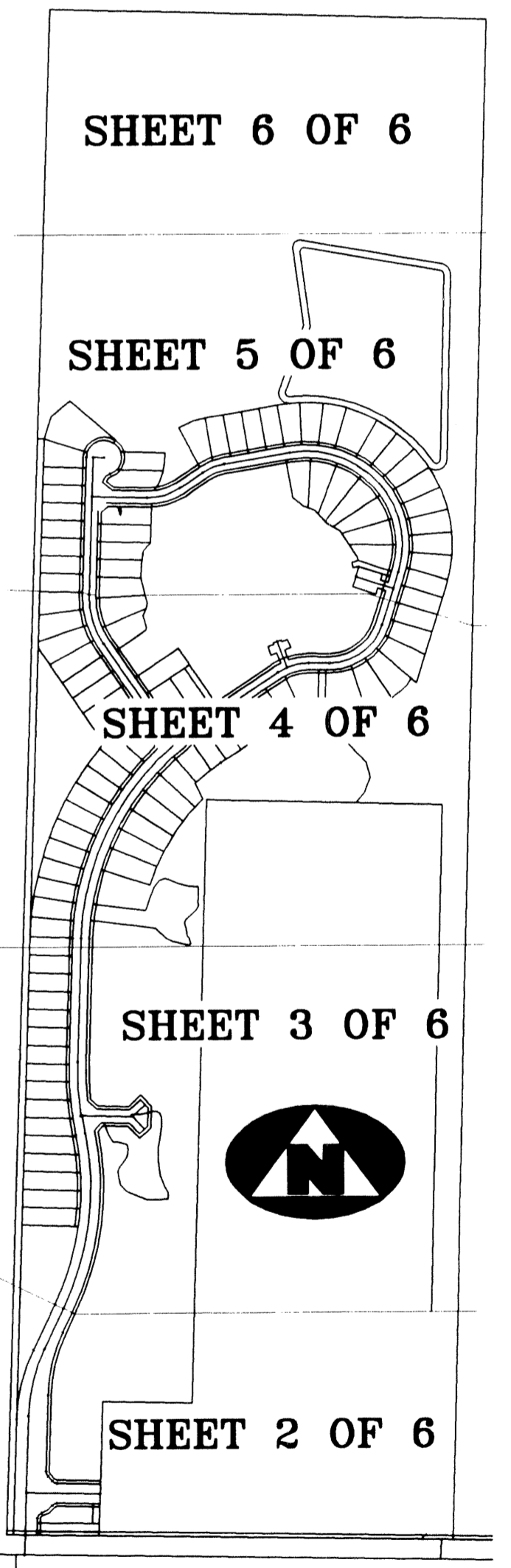
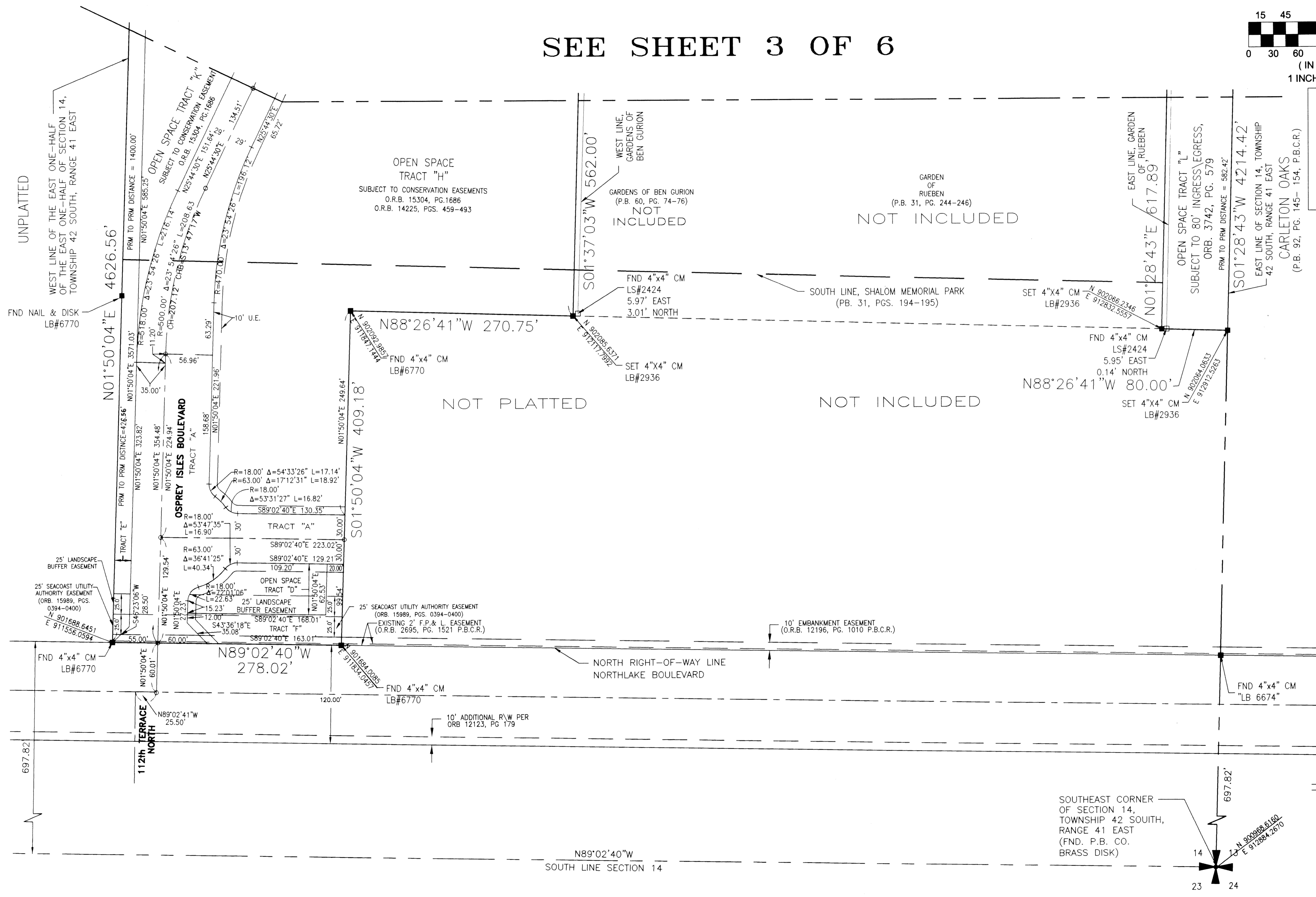
SEE SHEET 3 OF 6



SHEET 2 OF 6



LOCATION MAP (NOT TO SCALE)



SUBDIVISION Osprey Isles
 BLOCK 101
 PLAT ZONE B
 GUAD # 50
 ZONING PDD
 ZIP CODE 33412
 TAX 825
 PUD NAME Osprey Isles

FILE: \N:\Projects\021107\vacua\plat\SPITE.dwg
 DATE: 24-09-03