

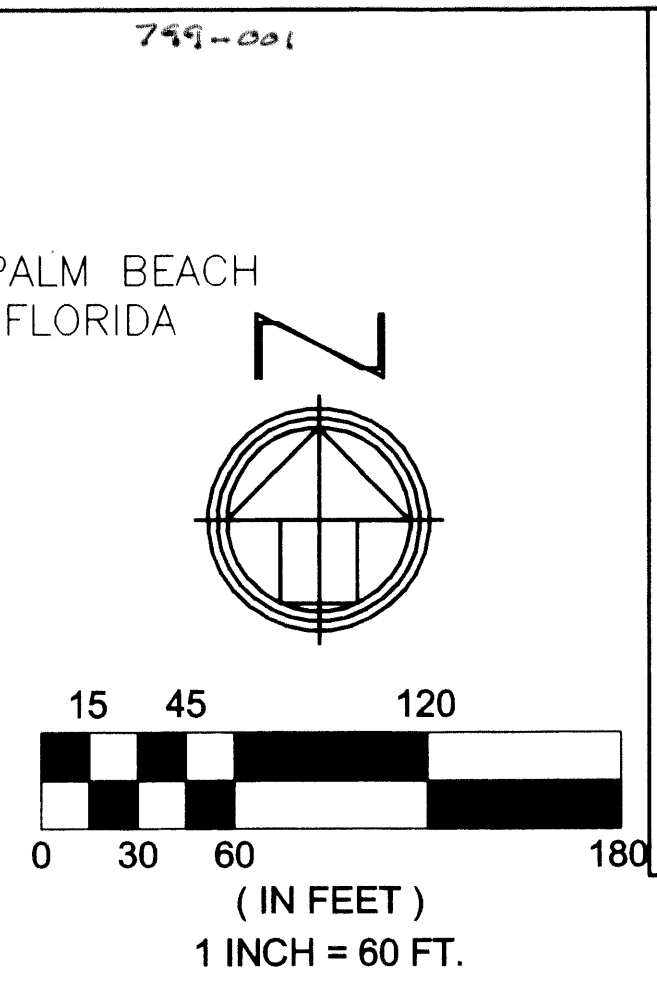
# OSPREY ISLES, A P.U.D.

BEING A REPLAT OF A PORTION OF SHALOM MEMORIAL PARK, AS RECORDED IN PLAT BOOK 31, PAGE 194, PUBLIC RECORDS OF PALM BEACH COUNTY, FLORIDA, TOGETHER WITH A PORTION OF SECTION 14, TOWNSHIP 42 SOUTH, RANGE 41 EAST, PALM BEACH COUNTY, FLORIDA

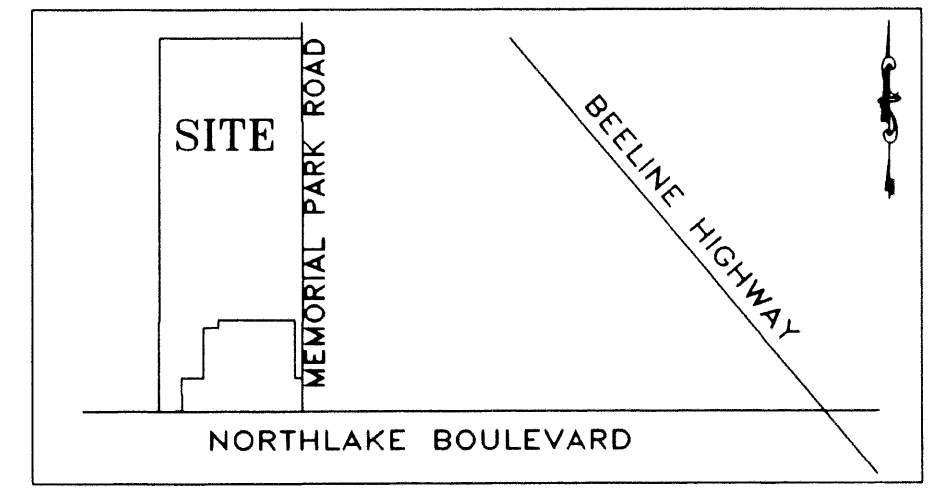
74

OCTOBER 2003 021107 DRL

SEE SHEET 4 OF 6



SHEET 3 OF 6

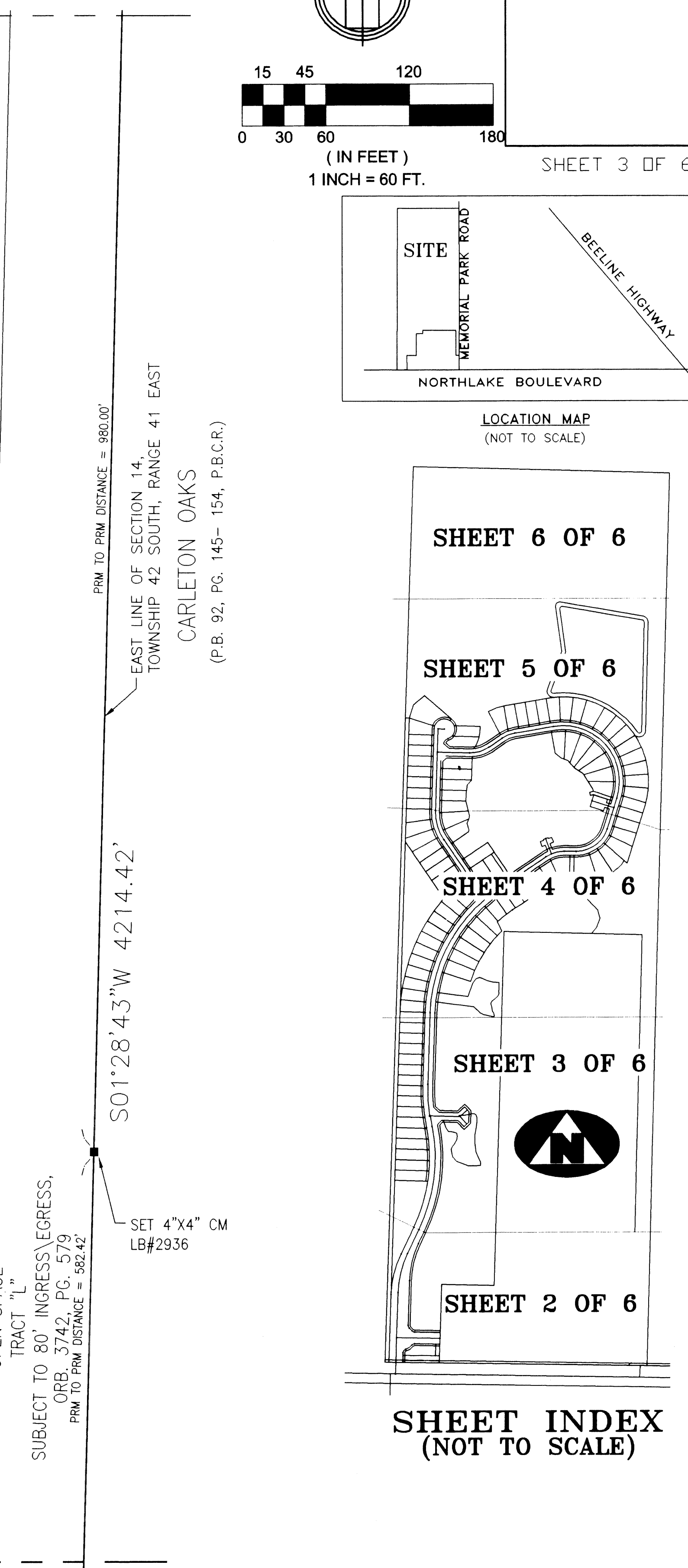
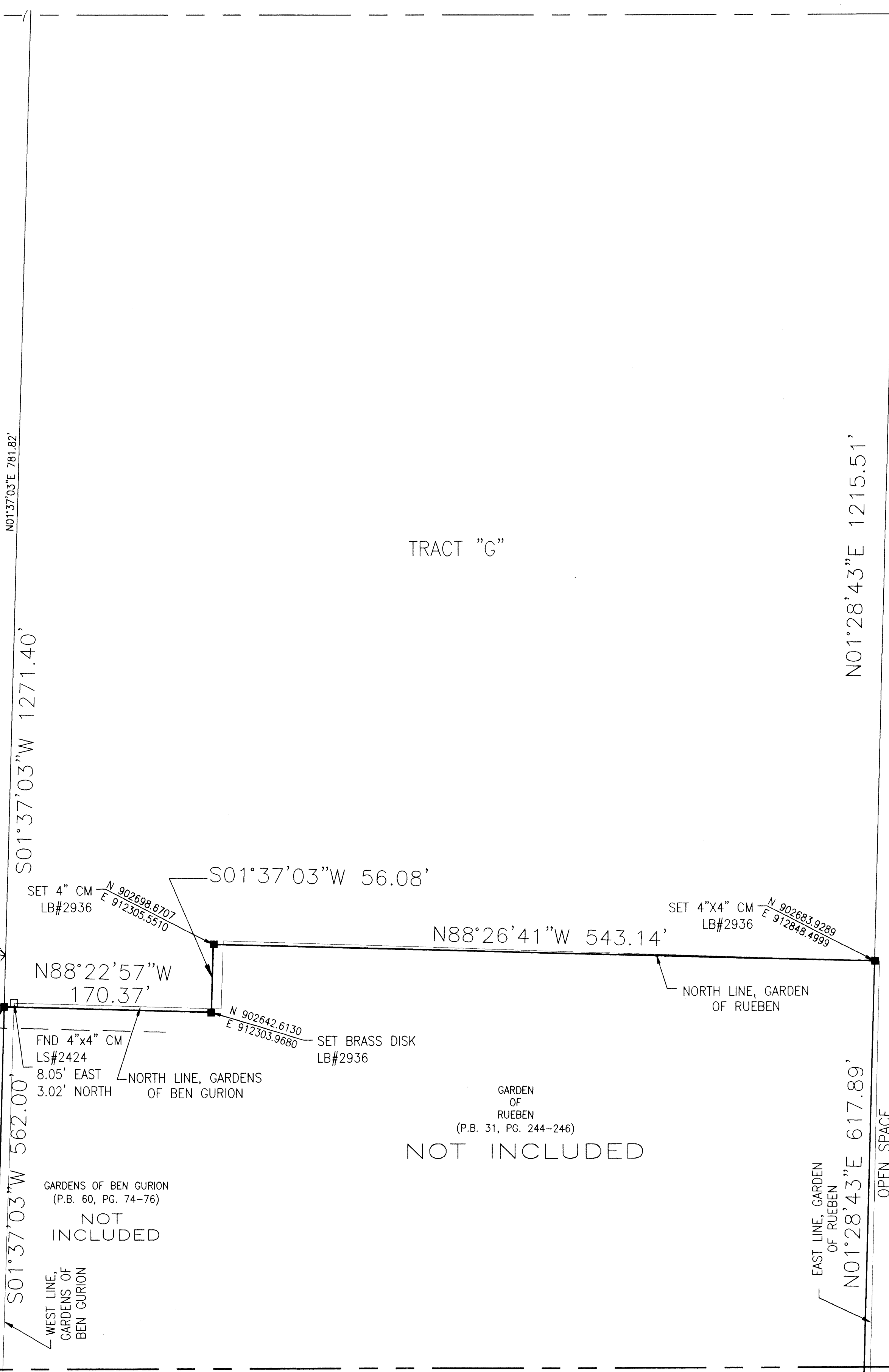
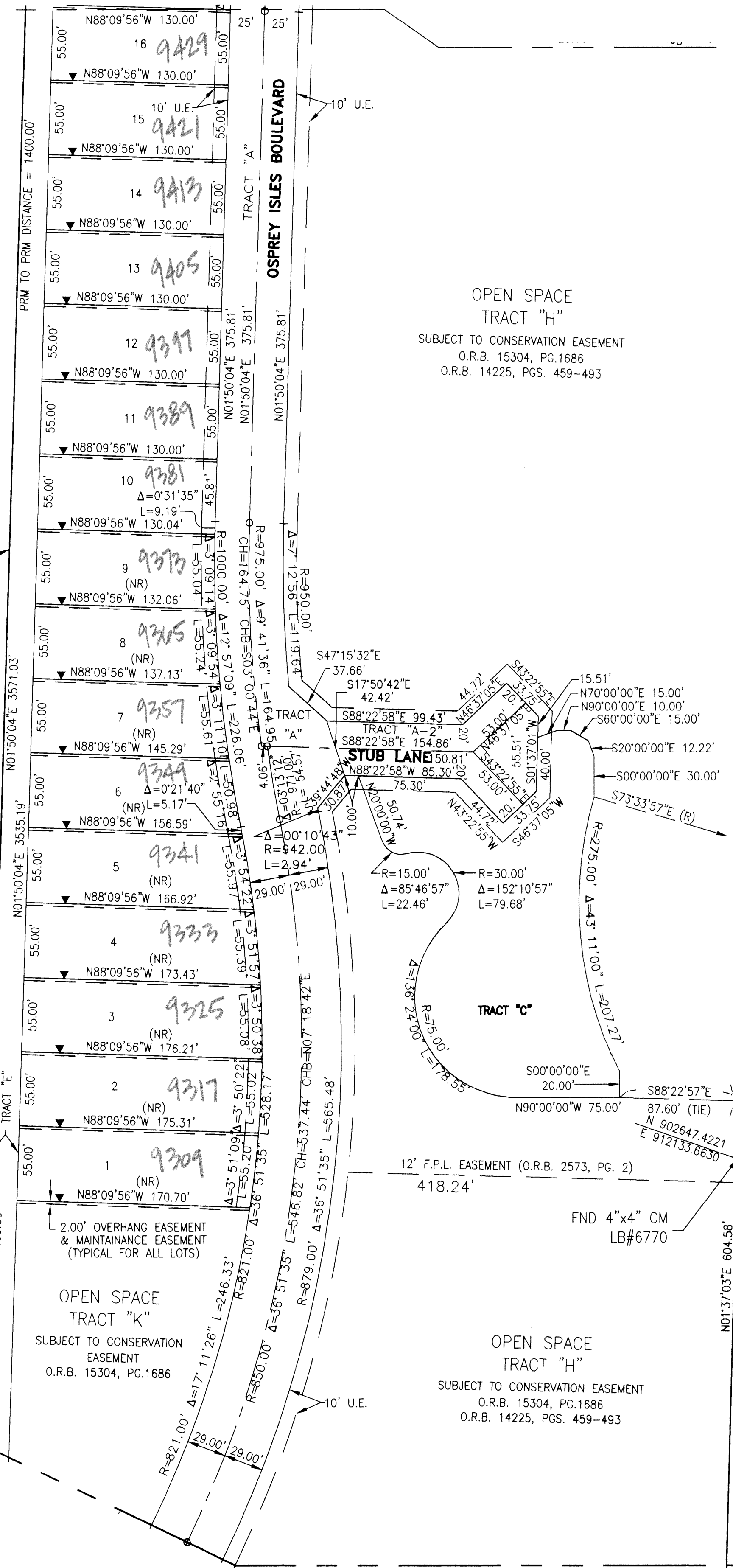


LOCATION MAP (NOT TO SCALE)

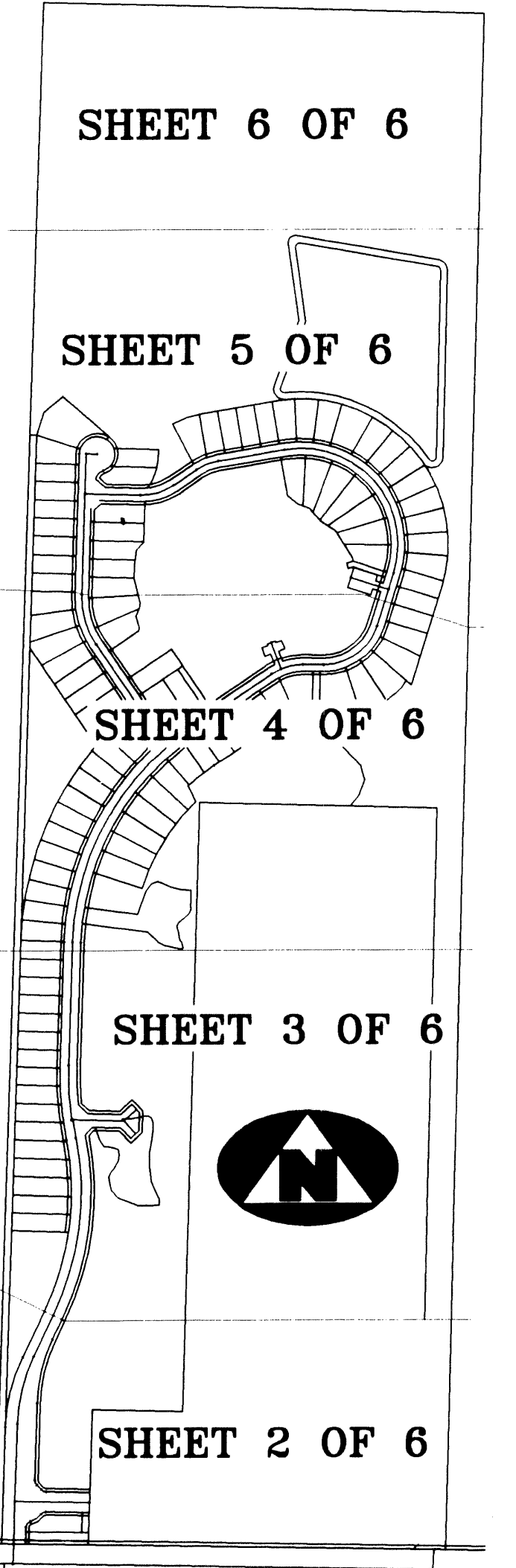
UNPLATTED

WEST LINE OF THE EAST ONE-HALF OF SECTION 14, TOWNSHIP 42 SOUTH, RANGE 41 EAST

N01°50'04"E 4626.56'



SEE SHEET 2 OF 6



SHEET INDEX (NOT TO SCALE)

FILE: \\N:\Projects\021107\Acad\Plot\ASHT3.dwg  
 DATE: 24-Dec-03  
 SUBD: VISION OSPREY ISLES  
 BOOK: 101  
 FLOOD MAP # 50B  
 FLOOD ZONE B  
 ZONING PUD  
 QUAD # 58  
 SE  
 ZIP CODE 33412  
 TAZ 825  
 PUD NAME OSPREY ISLES